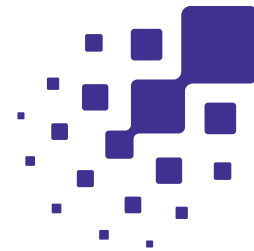


Sofia[®] 2

SARS Antigen+ FIA



Reliable results for SARS-CoV-2 in only 10 minutes

For the qualitative detection of the nucleocapsid protein antigen of SARS-CoV-2 in direct anterior nasal swab (NS) specimens.

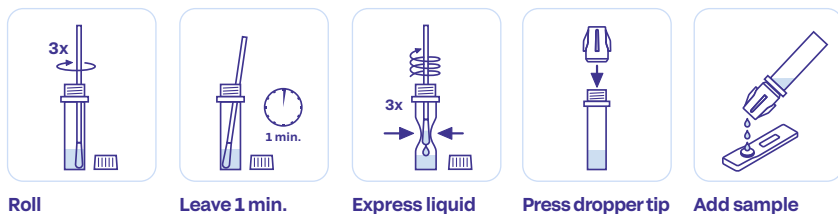
- First FDA-cleared rapid test for COVID-19
- Results in 10 minutes
- Anterior nasal swab specimens
- Kit includes 25 sterile nasal swabs
- Room temperature storage
- CLIA waived

EUA extracted SARS-CoV-2 RT-PCR result*

| | Pos | Neg | Total |
|---------------------------------------|--|-----|-------|
| Sofia pos | 118 | 5 | 123 |
| Sofia neg | 15 | 685 | 700 |
| Total | 133 | 690 | 823 |
| Positive percentage agreement (PPA) = | 88.7% (118/133) (95% CI = 92.2% - 93.0%) | | |
| Negative percentage agreement (NPA) = | 99.3% (685/690) (95% CI = 98.3% - 99.7%) | | |
| Positivity rate = | 16.2% (133/823) (95% CI = 13.8% - 18.8%) | | |

*Refer to the Package Insert for additional performance claims.

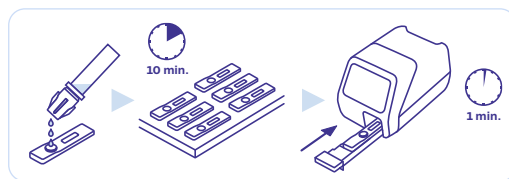
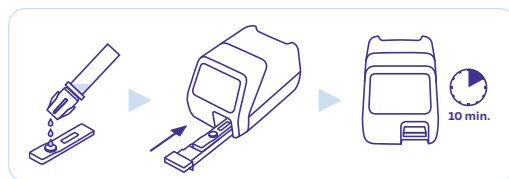
Nasal swab procedure



Ordering information

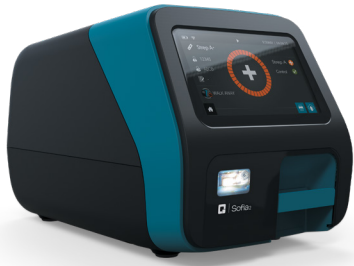
| Catalog no. | Description | Kit size |
|-------------|---------------------------|-------------|
| 20405 | Sofia 2 SARS Antigen+ FIA | 25 test kit |

Sofia 2 development modes



Sofia[®] 2

Innovating diagnostics, enabling unlimited insights



Sofia 2 uses **advanced immunofluorescence technology** that combines intuitive software, fluorescent chemistry and lateral flow technology to automatically deliver accurate results in minutes without the need for visual interpretation.

Sofia 2 is a **portable, easy-to-use benchtop** analyzer that offers **enhanced workflow flexibility** based on your unique testing demands. Combined with a growing menu of fluorescent immunoassays on the system, Sofia 2 takes lateral flow testing to a whole new level.

Highly accurate and reliable results ideal for both point-of-care and laboratory test settings

Fluorescence-based chemistry combined with rapid results

- Offers you confidence in your rapid test results
- Within minutes, patients can be quickly and properly managed without the need to manually interpret test results

Flexible, dual-mode testing

- WALK AWAY Mode facilitates laboratory multitasking by eliminating manual timekeeping
- READ NOW Mode allows batch processing of dozens of samples per hour by utilizing rapid, successive Test Cassette reads following a simple benchtop incubation step

Automated results generation

- Removes the variability from operator to operator caused by interpreting visually read test results
- Advanced Result Technology (ART) available on Sofia 2 can provide results in as few as 3 minutes for certain assays
- Results are displayed on screen, printed and can be transmitted to the LIS effortlessly

Barcode technology

- Provides full traceability of individual Test Cassettes, individual test results, as well as test operator profiles
- An internal barcode scanner reads each Test Cassette to record test- and lot-specific data. The external barcode reader is used to scan Patient and Operator IDs

LIS connectivity

- Reduces your staff's burden of manually recording test results
- Sofia 2 connects to the majority of existing information systems using the ASTM or POCT1-A protocols

External and internal memory storage

- Internal memory stores patient results
- External SD Cards on Sofia and external USB Drives on Sofia 2 are capable of storing thousands of test results

Ordering information

| Catalog no. | Quantity | Description |
|-------------|----------|------------------------|
| 20299 | 1 | Sofia 2 Analyzer |
| 20300 | 1 | Sofia 2 Analyzer (XUS) |
| 20314 | 1 | Sofia 2 install pack |