

Reusable apparel & accessories

Protection you can count on



**Suit up
with
confidence**

Textiles you can use— again and again

Choose from a variety of gowns and accessories, in a wide range of fabrics, colors, sizes and styles, to keep you comfortable and protected no matter what procedure





Surgical gowns

6



Isolation gowns

14



Cover gowns

20



Barrier coats

26



Accessories

30



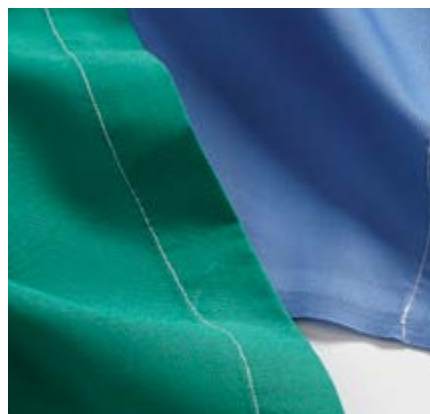
O.R. towels

32



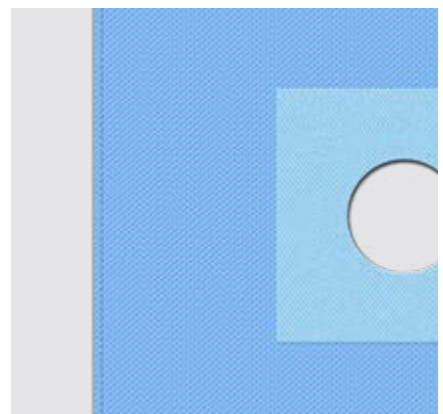
Wrappers

34



O.R. sheets & pillowcases

36



O.R. drapes

38

Choose to reuse

Reusable isolation gowns save money and reduce waste

- Easy on the budget and the environment
- A great way to assure your supply
- Save money and reduce waste
- Meet industry standards for pathogen, fluid and infection prevention
- Provide several levels of protection, comfort flexibility, strength, durability and low linting¹
- Modern laundering techniques save water thanks to heat reclamation and other innovative solutions to return energy to washer, dryers and ironers²

Choosing reusables has its benefits:



64%

Reduction in natural resource energy consumption³



66%

Reduction in greenhouse gas emissions³



83%

Reduction in blue water consumption³



84%

Per article reduction in solid waste generation³

Contact your Medline Representative on how to start a hybrid program that offers cost savings when implementing both disposable and reusable gowns

References: **1.** Why Choose Reusable Isolation Gowns? It's the Responsible Choice, Because the Future is NOT Disposable! American Reusable Textile Association. PO Box 1142, Mission, KS 66222. www.arta1.com. **2.** Reusable vs. disposable textiles. Greentooth Resources website. Available at: <http://www.Greentoothresources.com/news/Green-medical-trends/reusable-vs-disposable-textiles.php>. Accessed December 6, 2011. **3.** AORN Journal, The ARTA-IAHTM Lifecycle Assessment of Surgical Gowns. Accessed October 28, 2020.

Special touches call for a special process

Our apparel customization team will partner with you to outfit your staff, your way

Basic customization



Silk screening

Stencil-painted design printed by pressing color into fabric

Minimum order quantity: 12 units/size and 144 units/order

Lead Time: 4 weeks

Cost: Design and logo setup fees

Required form: Design Request and Custom Item Request Form



RFID

Radio frequency identification tags track items to help prevent loss

Minimum order quantity: 72 units/size

Lead Time: Approximately 10-12 weeks based on volume

Cost: RFID costs built into overall cost of item

Required form: Custom Item Request Form



Heat seal

Heat is used to permanently bond ink to fabric for a lasting effect

Minimum order quantity: 15 units/order

Lead Time: 4 weeks

Cost: Design and logo setup fees

Required form: Design Request and Custom Item Request Form



Kaumagraph

Hot paper transfer applied with heat and pressure for a durable finish

Minimum order quantity:

- **Customer applied:** 2,000 heat transfer papers
- **Medline applied:** Case pack quantity

Lead Time: 4 weeks

Cost: Design, logo setup and plate fees

Required form: Design Request and Custom Item Request Form



Embroidery

Thread-sewn, needlework design

Minimum order quantity: None

Lead Time: 10-12 days

Cost: Design and logo setup fees, plus embroidery fee

Required form: Design Request and Embroidery Form



Color extension

Colors outside our standard assortment, but already established in other styles (excluding surgical and isolation gowns.)



Learn more about customizing your gowns

Scan the code to find out more, [here](#)



Surgical gowns

Superior protection

Xalt Level 4 surgical gowns.....7

Blockade surgical gowns.....10

Medline Xalt™ reusable surgical fabric

Protection, durability and comfort

Medline's Xalt surgical textiles provide a superb combination of protection, comfort, durability and sustainability. The unique Xalt surgical barrier fabric is comprised of a proprietary membrane laminated between two layers of polyester material to deliver a high level of protection and breathability.



Durable



Industrial laundry
75 wash cycles

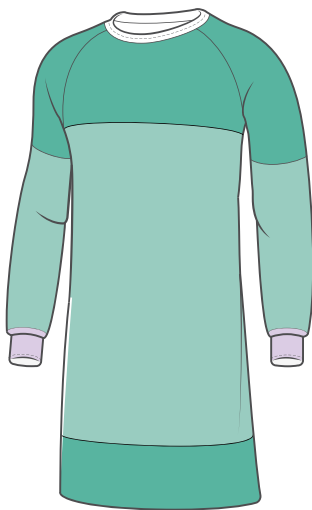
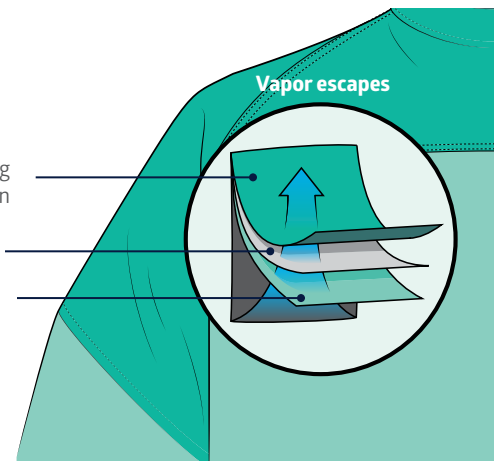


Breathable

Ultimate protection

All products featuring the Xalt fabric and seam seal tape comply with Level 4 regulations throughout their lifespan.

Fluid resistant, low-linting polyester woven
Proprietary Xalt membrane
Polyester knit



Panel coverage gown

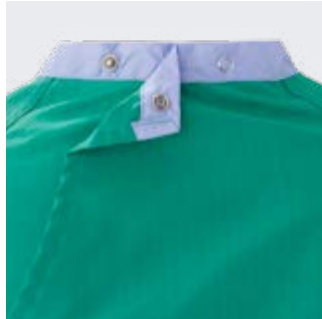


Critical coverage gown

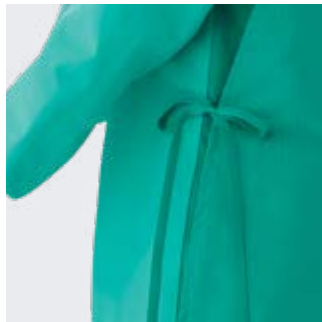


Xalt Level 4 surgical gowns

- Highly protective and breathable
- Liquid- and viral-resistant Xalt fabric for critical zones
- Liquid- and static-resistant ResiStat fabric in non-critical zones
- Reusable through 75 wash cycles; low linting fabric



Snaps at collar



Ties at mid-back



MDTGXC4JL

Xalt Level 4 critical coverage gowns

Snaps at the neck, ties at mid-back

Item No.	Color	Size
MDTGXC4JL	Green	L
MDTGXC4JXL	Green	XL
MDTGXC4JXXL	Green	XXL

Collar color options

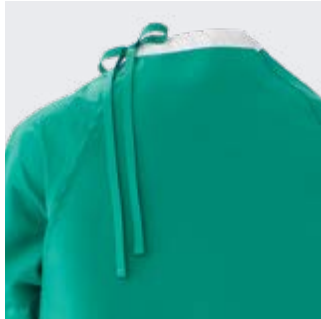
Color-coded military collar indicates gown size:

Ceil Blue	Large
White	X-Large
Green	XX-Large

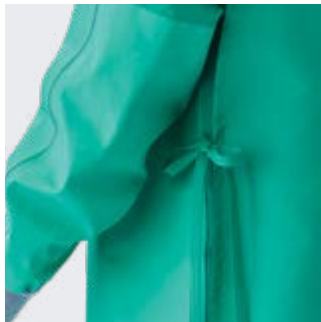
Collar color options

Color-coded military collar indicates gown size:

Ceil Blue	Large
White	X-Large
Green	XX-Large



Ties at collar

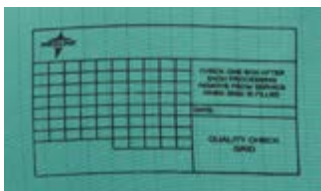


Ties at mid-back

Xalt level 4 panel coverage gowns

Ties at the neck, ties at mid-back

Item No.	Color	Size
MDTGXP4JL	Green	L
MDTGXP4JXL	Green	XL
MDTGXP4JXXL	Green	XXL



Gowns feature a quality control grid that allows you to track usage



MDTGXP4JXL

Medline Blockade surgical fabric

Fluid and static resistant

Medline's Blockade fabric has a taffeta weave with untwisted continuous filaments. It's made of 99% polyester with 1% carbon to help dissipate static electricity. The fabric's high-density construction resists fluids while maintaining comfort and functionality.



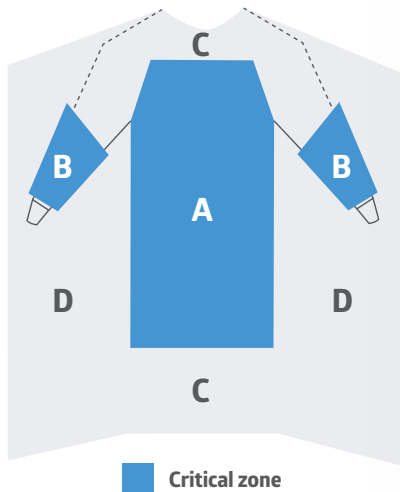
Durable



Industrial laundry
75 wash cycles



Static resistant



The front, sides and back of the gown (areas A, B, and C) are required to have a barrier performance of at least Level 1.



Reprinted from ANSI/AAMI PB70:2012 with permission of Association for the Advancement of Medical Instrumentation, Inc. © 2012 AAMI. www.aami.org. All rights reserved. Further reproduction or distribution prohibited.

Blockade surgical gowns

- Comfortable and fluid resistant
- Dissipates static electricity with 99% polyester / 1% carbon construction
- Reusable through 75 wash cycles; low linting fabric
- Not made with PFOS/PFOA

Color-coded collar



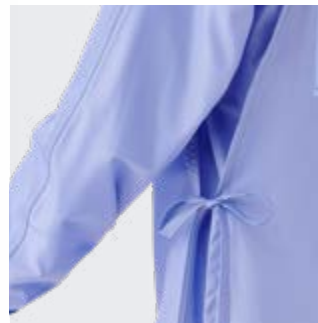
1-ply Blockade fabric (entire gown)



MDT012086L



Ties (or snaps) at the neck



Ties at mid-back

1-ply surgical gown with Blockade fabric on the full front, sleeves and back

Snaps at the neck, ties at mid-back

Item No.	Color	Size
MDT012080L	Ceil Blue	L
MDT012080XL	Ceil Blue	XL
MDT012080XXL	Ceil Blue	XXL

Ties at the neck, ties at mid-back

Item No.	Color	Size
MDT012086L	Ceil Blue	L
MDT012086XL	Ceil Blue	XL

Collar color options

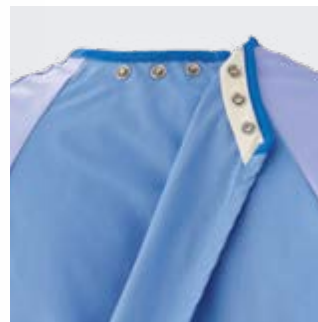
Color-coded military collar indicates gown size

Ceil Blue	Large
White	X-Large
Green	XX-Large

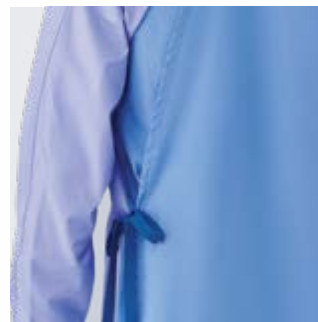
Color-coded collar



1-ply Blockade fabric on front



Snaps (or ties) at neck



AngelStat fabric on back
Ties (or snaps) at mid-back

1-ply Blockade on front and AngelStat on back surgical gowns

Ties at the neck, ties at mid-back

Item No.	Color	Size
MDT012090L	Ceil Blue	L
MDT012090XL	Ceil Blue	XL

Snaps at the neck, ties at mid-back

Item No.	Color	Size
MDT012091L	Ceil Blue	L
MDT012091XL	Ceil Blue	XL
MDT012091XXL	Ceil Blue	XXL

Snaps at the neck, snaps at mid-back

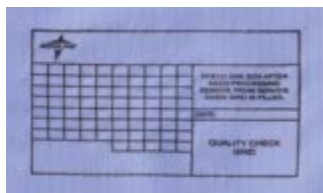
Item No.	Color	Size
MDT012092L	Ceil Blue	L
MDT012092XL	Ceil Blue	XL
MDT012092XXL	Ceil Blue	XXL

MDT012091L

Collar color options

Color-coded bias collar indicates gown size

Ceil Blue	Large
White	X-Large
Green	XX-Large



Gowns feature a quality control grid that allows you to track usage



Ties (or snaps) at neck



Ties (or snaps) at mid-back

2-ply Blockade surgical gowns

Ties at the neck, ties at mid-back

Item No.	Color	Size
MDT012083S	Ceil Blue	S
MDT012083M	Ceil Blue	M
MDT012083L	Ceil Blue	L
MDT012083XL	Ceil Blue	XL
MDT012081L	Misty Green	L
MDT012081XL	Misty Green	XL

Snaps at the neck, ties at mid-back

Item No.	Color	Size
MDT012085L	Ceil Blue	L
MDT012085XL	Ceil Blue	XL
MDT012085XXL	Ceil Blue	XXL

Snaps at the neck, snaps at mid-back

Item No.	Color	Size
MDT012084L	Ceil Blue	L
MDT012084XL	Ceil Blue	XL

Yellow	Small
Jade Green	Medium
Ceil Blue	Large
White	X-Large
Mint Green	XX-Large

Collar color options

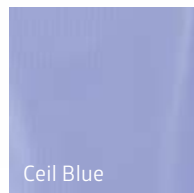
Color-coded bias collar indicates gown size

Color-coded collar

2-ply Blockade fabric on front and 3/4 sleeves



MDT012083L



Ceil Blue



Misty Green



Isolation gowns

All-around protection

Isolation gowns

All-around protection

- AAMI Level 1 isolation gowns
- Meets AAMI PB70 Level 1 requirements
- 360-degree protection
- Fluid-resistant and low-linting fabric
- Reusable through 75 wash cycles



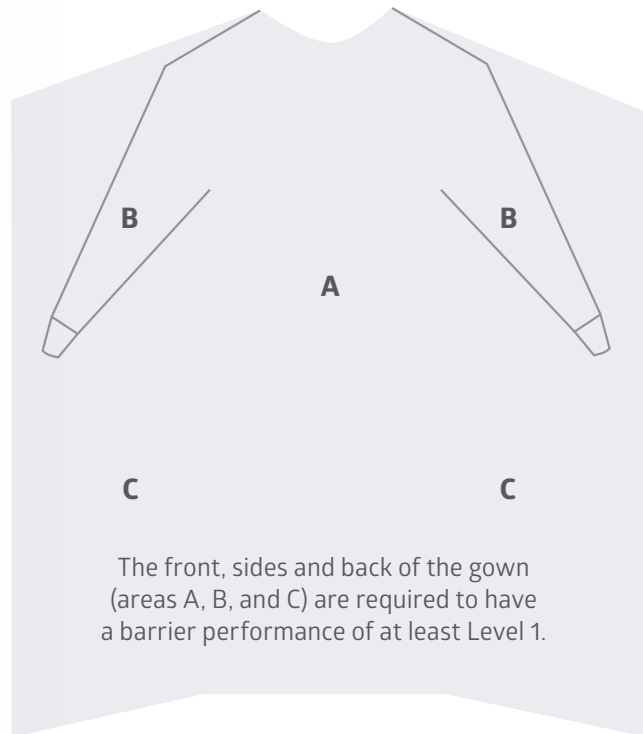
Durable



Industrial laundry
75 wash cycles



AAMI
PB70:2012
requirements



The front, sides and back of the gown (areas A, B, and C) are required to have a barrier performance of at least Level 1.

Reprinted from ANSI/AAMI PB70:2012 with permission of Association for the Advancement of Medical Instrumentation, Inc. © 2012 AAMI. www.aami.org. All rights reserved. Further reproduction or distribution prohibited.



Overlap back ties at neck and waist

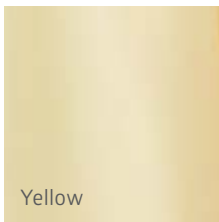
Level 1 fluid-resistant blockade isolation gowns

- Fluid-resistant fabric made of 100% polyester
- Overlap back
- Ties at neck and waist
- 100% polyester knit cuffs

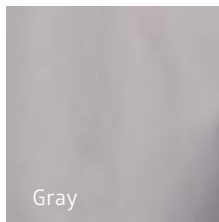
Item No.	Color	Size	Pkg.
MDT011207	Yellow	One size fits most	6 dz/cs
MDT011207Z	Yellow	One size fits most	1 dz/cs
MDT011207XXXL	Yellow	3XL	1 dz/cs
MDT011205	Gray	One size fits most	6 dz/cs



MDT011207



Yellow



Gray



Gowns feature a quality control grid that allows you to track usage



Anti-static

Overlap back ties at neck and waist

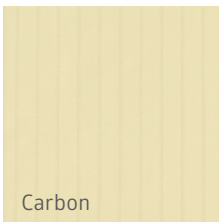
Level 1 fluid-resistant blockade isolation gowns with carbon fibers

- Fluid-resistant fabric made of 99% polyester/1% carbon
- Overlap back
- Ties at neck and waist
- 100% polyester knit cuffs
- Not made with PFOS/PFOA

Item No.	Color	Size	Pkg.
MDT011201L	Yellow	L	6 dz/cs
MDT011201XL	Yellow	XL	6 dz/cs



MDT011201L

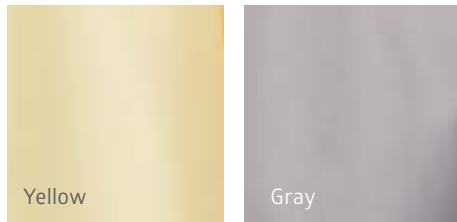


Carbon

Level 1 three arm hole isolation gowns

- Wraparound design makes donning and doffing easy
- Fluid-resistant fabric made of 100% polyester
- Overlap back
- No snaps or ties
- 100% polyester knit cuffs

Item No.	Color	Size	Pkg.
MDTIS03AHY	Yellow	One size fits most	6 dz/cs
MDTIS03AHY3XL	Yellow	3XL	6 dz/cs
MDTIS03AHG	Gray	One size fits most	6 dz/cs
MDTIS03AHG3XL	Gray	3XL	6 dz/cs



MDTIS03AHY





Anti-static

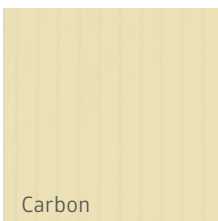


MDTISO3AHYCAR

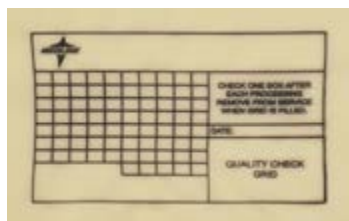
Level 1 fluid-resistant three arm hole isolation gown

- Wraparound design makes donning and doffing easy
- Fluid resistant fabric made of 99% polyester/1% carbon
- Overlap back
- Not made with PFOS/PFOA
- 100% polyester knit cuffs

Item No.	Color	Size	Pkg.
MDTISO3AHYCAR	Yellow	One size fits most	6 dz/cs
MDTISO3AHYCR3	Yellow	3XL	6 dz/cs



Carbon



Gowns feature a quality control grid that allows you to track usage



3 ways to don and doff the Medline 3-hole isolation gown

Scan the code to [watch the video](#)



Cover gowns

Everyday gowns



Cover gowns

Everyday gowns

Made of heavier-weight fabrics, these gowns are perfect for situations where a lower level of protection is needed. Medline's cover gowns help round out the product needs of your facility.



Durable



Industrial laundry



Commonly used by:



Veterinary clinics



Education and research



Ties at neck and mid-back



Form-fitting belt

606MJSXXL

Tunnel belt cover gowns

- 1-ply 100% cotton
- Adjustable back belt
- Color-coded tie closure for size identification
- Ties at the neck and mid-back

Item No.	Color	Size
606MJS*	Jade Green	S-XXL

*Add size code to end of item number when ordering.

Tie closure colors

Color-coded ties indicate gown size

Orange	S
Light Brown	M
Black	L
White	XL
Jade Green	XXL

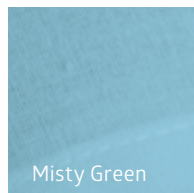


Ties at neck and mid-back

AngelStat cotton blend cover gowns

- Made of sturdy 55% cotton/45% polyester
- Overlap back for 360 degree coverage
- Ties at neck and back

Item No.	Color	Size
MDT012072	Ceil Blue	One size fits most
68675NTZL	Misty Green	L



Misty Green

MDT012072



Backless, ties at neck and waist



6636BLCXS

Backless barrier cover gown

- Blockade 99% polyester/1% carbon
- Color-coded tie closure for size identification
- Ties at neck and waist
- 100% polyester knit cuffs

Item No.	Color	Size
6636BLC*	Ceil Blue	XS-5XL

*Add size code to end of item number when ordering.

Tie closure colors

Color-coded ties indicate gown size:

Orange	XS, S
Brown	M
Black	L
White	XL
Jade Green	XXL
Tan	3XL
Yellow	4XL
Blue	5XL



Ties at neck and back



MDT011204

Economical cover gown

- Made of 55% cotton/45% polyester
- A medium weight, 2.6-oz. per square yard fabric
- 2" long stockinette cuffs
- Overlapping back closure with twill tape ties

Item No.	Color	Size	Pkg.
MDT011204	Yellow	One size fits most	6 dz/cs
MDT011204Z	Yellow	One size fits most	1 dz/cs

Barrier coats

Added protection

Medline offers a line of barrier lab coats that support a myriad of situations. Our barrier lab coats come in unisex, men's and women's styles and in a variety of colors to meet your needs.

- Water resistant (tested to AATCC 127 and AATCC 42)
- Comfortable and Breathable (tested to ASTM E96)
- Not made with PFOS/PFOA
- Low linting (ISO 19073-10)



Durable



Industrial laundry
100 wash cycles



Breathable



Water resistant



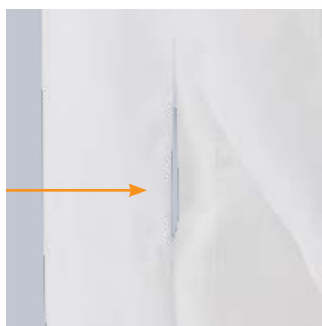
Low-linting



MDT046811



Snaps at collar



Opening to access pants pockets

Unisex barrier lab coat

- Fluid-repellant finish
- 100% polyester front, 55% cotton/45% polyester back
- Reinforced front snap closure is concealed
- Collar can be worn open or snapped closed
- Openings to access pants pockets

Also available in short length styles:
 MDT046883*
 Sizes XS-L
 6602BQW*
 Sizes XS-3XL

6623BQW

Left breast pocket and two lower patch pockets

Item No.	Color	Size	Pkg.
6623BQW*	White	XS-5XL	1/ea
6623BNW*	Navy	XS-5XL	1/ea

*Add size code to end of item number when ordering.

Without pockets

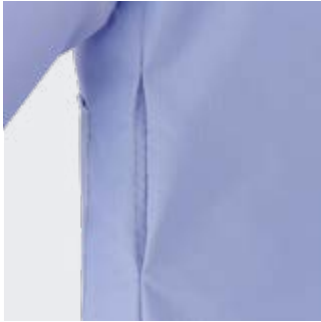
Item No.	Color	Size	Pkg.
6623BQWNP*	White	S-2XL	1/ea
6623NPBNW*	Navy	S-3XL	1/ea

*Add size code to end of item number when ordering.





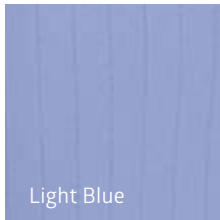
Snaps at collar



Opening to access pants pockets



White



Light Blue

99% polyester/
1% carbon fabric on
front and back



MDT046811M



Anti-static

Men's ResiStat protective lab coat

- 99% polyester/1% carbon fiber fluid-resistant material
- 100% polyester cuffs
- Two lower pockets and one chest pocket
- Overlapping front closure with five snaps
- Classic straight collar
- Openings to access pants pockets

With pockets

Item No.	Color	Size	Pkg.
MDT046805*	White	XS-3XL	1/ea
MDT046811*	Light Blue	XS-3XL	1/ea

*Add size code to end of item number when ordering.

Without pockets

Item No.	Color	Size	Pkg.
MDT046805NP*	White	XS-4XL	1/ea

*Add size code to end of item number when ordering.

Also
available in a
women's style:
MDT046815*
Sizes XS-3XL

99% polyester/
1% carbon front with
fluid-repellant finish

55% cotton/
45% polyester back



Snaps at collar with zipper



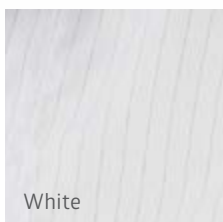
6620BLHM

Unisex ResiStat barrier lab coat

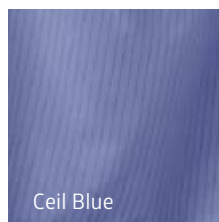
- Fluid-repellant finish
- 99% polyester/1% carbon front, 55% cotton/45% polyester back
- Two lower patch pockets
- Zip closure is concealed
- Collar can be worn open or snapped closed

Item No.	Color	Size	Pkg.
6620BLH*	White	XS-4XL	1/ea
6621BLC*	Ceil Blue	XS-4XL	1/ea

*Add size code to end of item number when ordering.



White



Ceil Blue

Accessories



MDTSHOECOVER

Reusable shoe covers

- AngelStat fabric
- 55% cotton/45% polyester
- Fits up to a size 12–14 men's
- Made-to-order item

Item No.	Size	Color	Pkg.
MDTSHOECOVER	30" L x 12.5" W	Ceil Blue	288 ea/cs



MDTZ1011102AA

Reusable elastic-back cap

- AngelStat fabric
- 55% cotton/45% polyester
- Bouffant type
- Made-to-order item

Item No.	Size	Color	Pkg.
MDTZ1011102AA	One size fits most, 11.5 W x 25.5" L	Navy	1 ea



MDT012116MTY

Reusable surgical cap

- AngelStat fabric
- 55% cotton/45% polyester
- White cloth ties fasten in back
- Made-to-order item

Item No.	Size	Color	Pkg.
MDT012116MTY	19" W x 7" L	Misty Green	36 ea/cs
MDT012116NVY	19" W x 7" L	Navy	36 ea/cs

Patches, ties, chips and pass cards



PATREC2075XLT

Item No.	Material	Color	Size	Pkg.
PATRD1010XLT	Xalt	Green	1" round	1000/bx
PATRD2020XLT	Xalt	Green	2" round	500/bx
PATSQ2020XLT	Xalt	Green	2" square	500/bx
PATREC2075XLT	Xalt	Green	2" x 0.75" rectangle	1000/bx
PATREC3025XLT	Xalt	Green	3" x 2.5" rectangle	250/bx
MDT012015CB	Blockade	Ceil Blue	7/8" x 1.5" rectangle	1000/bx
MDT012015TB	ResiStat	Blue	7/8" x 1.5" rectangle	1000/bx
MDT0SURGTIEBU	Surgical gown ties	Blue	21"	36 dz
MDT0SURGTIEWH	Surgical gown ties	White	21"	36 dz
MDT0SURGTIEJG	Surgical gown ties	Green	21"	3 dz
MDT012005	Pass cards			500/pk
MDTRFCHPUHFGU	RFID chips			500/bg



ISOGOWNDISPS



ISOGOWNDISPL

Recommended to be hung on doors near ICU patient rooms

Isolation gown dispensers

- Convenient hanging bags store reusable gowns for easy grab-and-go
- Small dispenser offers easy storage in cart
- Large bag hangs on a door and has a convenient carry handle
- Fast and easy dispensing
- 100% polyester in gray
- Made-to-order item

Item No.	Description	Gown Capacity	Pkg.
ISOGOWNDISPS	Small, 14"H x 17"W x 34"D	Holds 10 gowns	1 ea
ISOGOWNDISPL	Large, 28.5"H x 17"W x 34"D	Holds 20 gowns	1 ea

Heat-seal press machines

- For marking and mending linens and garments
- Compact design fits in smaller spaces
- Top heat with heat indicator, adjustable thermostat and digital timer
- Stainless steel base with non-skid rubber feet
- Requires no air to operate

Item No.	Specifications	Pkg.
MDT221227	400 watts, 4 amps, 60 cycle, 110V, AC	1 ea
MDT221228	Mighty Mark-n-Mender, 400 watts, 4 amps, 60 cycle, 110V, AC	1 ea
HS3EHEATSEAL	Manuel opening	1 ea
HS4EHEATSEAL	Automatic opening	1 ea



MDT221228

O.R. towels

Low linting



Durable



Industrial laundry



100% cotton



Avoiding lint in the O.R. is critical as it may contaminate an open wound. O.R. towels from Medline are constructed of low-linting 100% cotton. They're highly absorbent and ideal for prepping, lining trays, cleaning up, and squaring off surgical sites.

Summit absorbant O.R. towel

- 100% long-staple cotton yarns
- Absorbent weave is a lose twisted yarn with large interstices, for notable absorbency

Item No.	Size	Color	Pkg.
MDTST4A31MIS	17" x 29"	Misty	300 ea/25 dz
MDTST4A31JAD	17" x 29"	Jade Green	300 ea/25 dz
MDTST4A31CEI	17" x 29"	Ceil Blue	300 ea/25 dz

Marathon absorbant O.R. towel

- 100% long-staple cotton yarns
- Absorbent weave is a lose twisted yarn with large interstices, for notable absorbency

Item No.	Size	Color	Pkg.
MDTST5A31MIS	18" x 29"	Misty	300 ea/25 dz
MDTST5A31JAD	18" x 29"	Jade Green	300 ea/25 dz
MDTST5A31WHI	18" x 29"	White	300 ea/25 dz
MDTST5A31CEI	18" x 29"	Ceil Blue	300 ea/25 dz
MDTST5A31JADZ	18" x 29"	Jade Green	60 ea/5dz
MDTST5A31CEIZ	18" x 29"	Ceil Blue	60 ea/5dz

Infinity huck O.R. towel

- 100% long-staple cotton yarns offer high durability
- Huck weave is a tightly twisted yarn weave design

Item No.	Size	Color	Pkg.
MDTST5H31CEI	18" x 29"	Ceil Blue	300 ea/25 dz
MDTST5H31JAD	18" x 29"	Jade Green	300 ea/25 dz
MDTST5H31WHI	18" x 29"	White	300 ea/25 dz

Apex huck O.R. towel

- 100% long-staple cotton yarns offer high durability
- Huck weave is a tightly twisted yarn weave design

Item No.	Size	Color	Pkg.
MDTST4H33MIS	18" x 31"	Misty	300 ea/25 dz
MDTST4H33JAD	18" x 31"	Jade Green	300 ea/25 dz

Summit X-ray absorbent O.R. towel

- Absorbent weave is a lose twisted yarn with large interstices, for notable absorbency
- Support your facility's efforts to reduce retained foreign objects
- X-ray detectable strip sewn into the hem
- Yellow thread helps ensure easy identification

Item No.	Size	Color	Pkg.
MDTST4A33MISX	18" x 31"	Misty	300 ea/25 dz

PerforMAX absorbent O.R. towel

- 100% polyester and is an energy efficient textile
- Absorbent weave is a lose twisted yarn with large interstices, for notable absorbency

Item No.	Size	Color	Pkg.
MDTST7A29JAD	18" x 29"	Jade Green	300 ea/25 dz

Choose from a variety of styles and colors



Yellow thread for easy identification

Wrappers

Reusable linens

Protect your O.R. towels, gowns and instruments during reprocessing with Medline's wide variety of 1-ply and 2-ply wrappers, with color-coded threads for easy size identification.



Durable

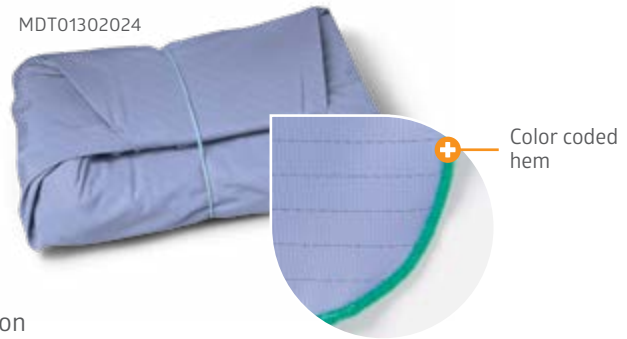


Industrial laundry



Static resistant

MDT01302024



ResiStat wrappers

- Made of 99% filament polyester/1% carbon fiber
- The lightweight, 1-ply fabric produces virtually no lint
- Air-textured surface allows for easy stacking of packs
- Pearl-stitched edges are color-coded for easy size identification

Item No.	Size	Color	Stitching color	Pkg.
MDT01302018	18" x 18"	Ceil Blue	Misty Green	60 ea/5 dz
MDT01302024	24" x 24"	Ceil Blue	Jade Green	60 ea/5 dz
MDT01302030	30" x 30"	Ceil Blue	Pink	60 ea/5 dz
MDT01302036	36" x 36"	Ceil Blue	Ceil Blue	60 ea/5 dz
MDT01302045	45" x 45"	Ceil Blue	White	24 ea/2 dz
MDT01302054	54" x 54"	Ceil Blue	Misty Green	12 ea /1 dz

Color coded threads

Misty Green	18" x 18", 54" x 54"
Jade Green	24" x 24"
Pink	30" x 30"
White	45" x 45"
Ceil Blue	36" x 36"

Ripstop wrappers

- Made of 99% polyester with 1% carbon fiber for static control
- Texturized non-slip surface
- 1-ply with a fluid-repellent finish
- Pearl-stitched edges are color-coded for easy size identification

MDT01302136



Item No.	Size	Color	Stitching color	Pkg.
MDT01302124	24" x 24"	Ceil Blue	Jade Green	60 ea/5 dz
MDT01302130	30" x 30"	Ceil Blue	Pink	60 ea/5 dz
MDT01302136	36" x 36"	Ceil Blue	Ceil Blue	60 ea/5 dz
MDT01302145	45" x 45"	Ceil Blue	White	60 ea/5 dz
MDT01302154	54" x 54"	Ceil Blue	Misty Green	24 ea/2 dz
MDT013021607	60" x 76"	Ceil Blue	Black	12 ea/1 dz
MDT013021609	60" x 90"	Ceil Blue	Black	12 ea/1 dz

Color coded threads

Misty Green	54" x 54"
Jade Green	24" x 24"
Pink	30" x 30"
White	45" x 45"
Ceil Blue	45" x 45"
Black	60" x 76", 60" x 90"



AngelStat bias bound wrappers

- 2-ply made of 55% cotton/45% polyester
- Stitched with a color-coded bias binding for quick identification

Item No.	Size	Color	Stitching color	Pkg.
MDT01320018	18" x 18"	Ceil Blue	Misty Green	60 ea/5 dz
MDT01320024	24" x 24"	Ceil Blue	Jade Green	60 ea/5 dz
MDT01320030	30" x 30"	Ceil Blue	Pink	60 ea/5 dz
MDT01320036	36" x 36"	Ceil Blue	Ceil Blue	60 ea/5 dz
MDT01320045	45" x 45"	Ceil Blue	White	24 ea/2 dz
MDT01320054	54" x 54"	Ceil Blue	Misty Green	12 ea/1 dz
MDT013200547	54" x 72"	Ceil Blue	White	12 ea/1 dz
MDT01320072	70" x 72"	Ceil Blue	Jade Green	12 ea/1 dz
MDT01320512	12" x 12"	Jade Green	Black	60 ea/5 dz
MDT01320518	18" x 18"	Jade Green	Misty Green	60 ea/5 dz
MDT01320524	24" x 24"	Jade Green	Jade Green	60 ea/5 dz
MDT01320527	27" x 27"	Jade Green	White	60 ea/5 dz
MDT01320530	30" x 30"	Jade Green	Pink	60 ea/5 dz
MDT01320536	36" x 36"	Jade Green	Ceil Blue	60 ea/5 dz
MDT01320545	45" x 45"	Jade Green	White	24 ea/2 dz
MDT01320554	54" x 54"	Jade Green	Misty Green	12 ea/1 dz
MDT013205547	54" x 72"	Jade Green	White	12 ea/1 dz
MDT01320572	70" x 72"	Jade Green	Jade Green	12 ea/1 dz
MDT01321018	18" x 18"	Misty Green	Misty Green	60 ea/5 dz
MDT01321024	24" x 24"	Misty Green	Jade Green	60 ea/5 dz
MDT01321030	30" x 30"	Misty Green	Pink	60 ea/5 dz
MDT01321036	36" x 36"	Misty Green	Ceil Blue	60 ea/5 dz
MDT01321045	45" x 45"	Misty Green	White	24 ea/2 dz
MDT01321054	54" x 54"	Misty Green	Misty Green	12 ea/1 dz
MDT013210547	54" x 72"	Misty Green	White	12 ea/1 dz
MDT01321072	70" x 72"	Misty Green	Jade Green	12 ea/1 dz

Wrapper colors



Color coded threads

Misty Green	18" x 18", 54" x 54"
Jade Green	24" x 24", 70" x 72"
Pink	30" x 30"
White	45" x 45", 54" x 72", 27" x 27"
Ceil Blue	36" x 36"
Black	12" x 12"

O.R. sheets & pillowcases

Ultra smooth, high-quality

Complete your reusable surgical textile line with our reusable linens. Our durable sheets and pillowcases are constructed to withstand the demands of the O.R. environment.



Durable



Industrial laundry



Low-linting

180 thread count percale sheets and pillowcases

- Made of 55% cotton/45% polyester
- Tightly woven to minimize linting and pin holes
- Ultra-smooth, high-quality

Sheets

Item No.	Size	Color	Pkg.
MDTOS4P72CEI	55" x 72"	Ceil Blue	24 ea/2 dz
MDTOS4P72MIS	55" x 72"	Misty Green	24 ea/2 dz
MDTOS4P72JAD	55" x 72"	Jade Green	24 ea/2 dz
MDTOS4P90CEI	55" x 90"	Ceil Blue	24 ea/2 dz
MDTOS4P90MIS	55" x 90"	Misty Green	24 ea/2 dz
MDTOS4P90JAD	55" x 90"	Jade Green	24 ea/2 dz
MDTOS4P108CEI	70" x 108"	Ceil Blue	24 ea/2 dz
MDTOS4P108MIS	70" x 108"	Misty Green	24 ea/2 dz
MDTOS4P108JAD	70" x 108"	Jade Green	24 ea/2 dz

Pillowcases

Item No.	Size	Color	Pkg.
MDTOS434CEI	42" x 36"	Ceil Blue	72 ea/6 dz
MDTOS434MIS	42" x 36"	Misty Green	72 ea/6 dz
MDTOS434JAD	42" x 36"	Jade Green	72 ea/6 dz



O.R. drapes

Fluid resistant

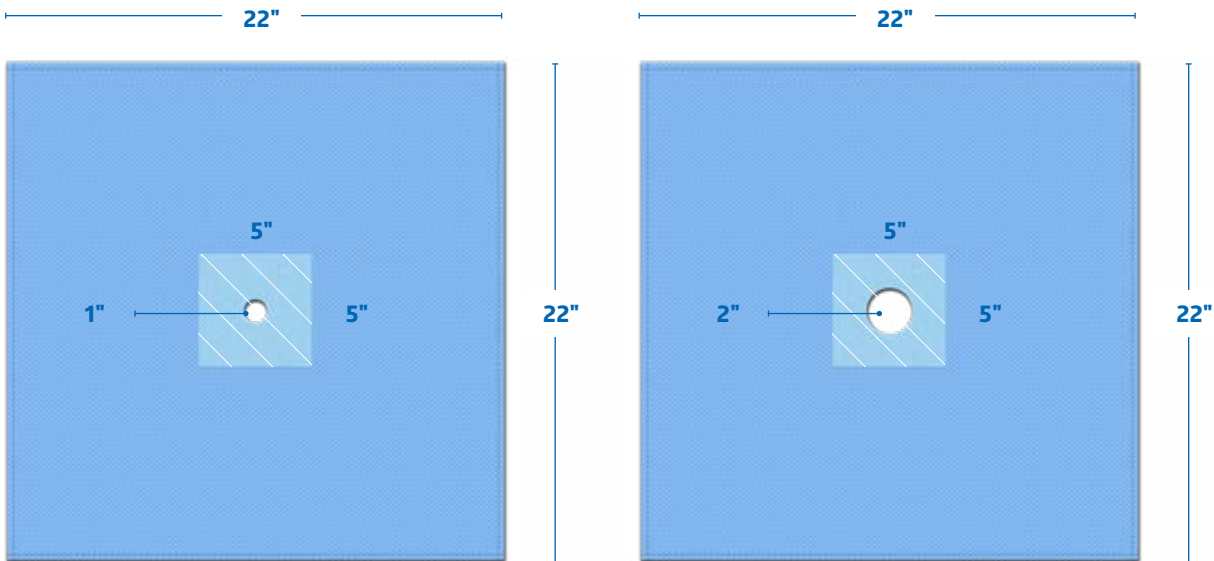
Maintaining sterility in the O.R. environment can be challenging. From smaller universal drapes for lump-and-bump situations to complete draping systems, Medline offers an integrated selection of fluid-resistant and poly/cotton drapes needed for optimal outcomes.



Durable






Industrial laundry



6651CBL22X1

6651CBL22X2

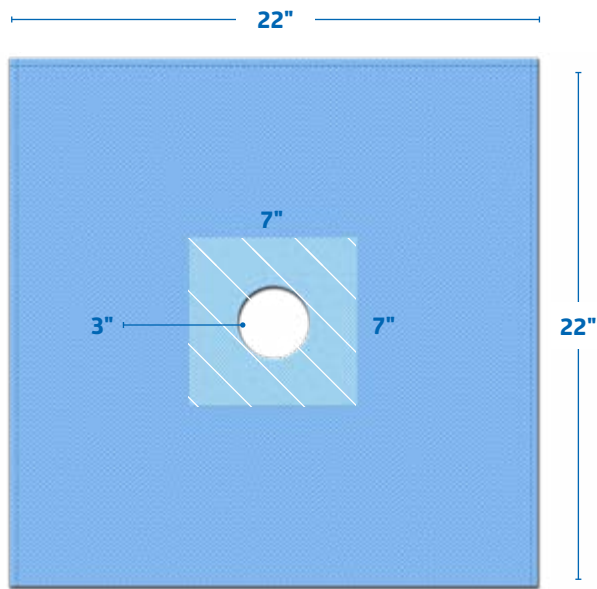
 AngelStat
  PolySoaker with blockade reinforcement
  Fenestrated

AngelStat fabric is 55% cotton/45% polyester

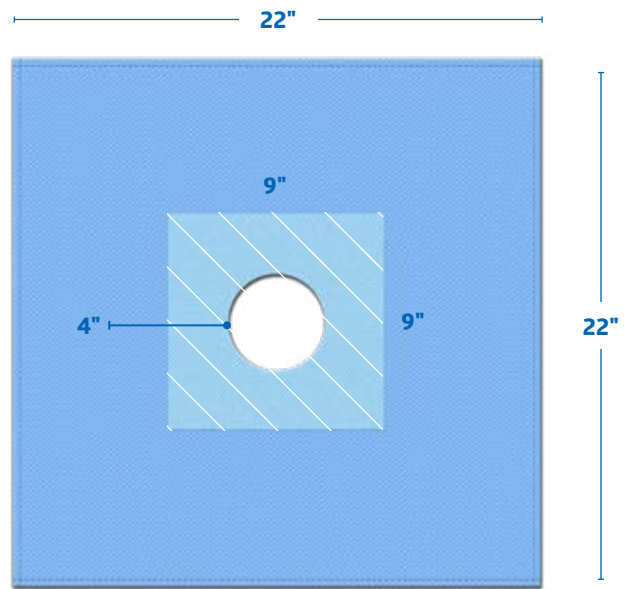
Universal drapes

- Used in procedures requiring isolated exposure
- Made-to-order item

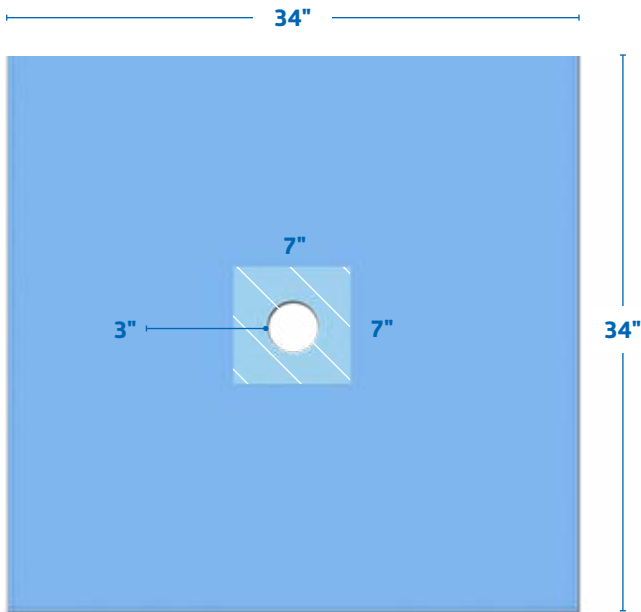
Item No.	Size	Fenestration Size	PolySoaker	Color	Pkg.
6651CBL22X1	22" x 22" (55.9 x 55.9 cm)	1" (2.54 cm) round	5" x 5" (12.7 x 12.7 cm) blockade reinforcement	Ceil Blue	24 ea/2 dz
6651CBL22X2	22" x 22" (55.9 x 55.9 cm)	2" (5.1 cm) round	5" x 5" (12.7 x 12.7 cm) blockade reinforcement	Ceil Blue	24 ea/2 dz
6651CBL22X3	22" x 22" (55.9 x 55.9 cm)	3" (7.6 cm) round	7" x 7" (17.8 x 17.8 cm) AngelStat reinforcement	Ceil Blue	24 ea/2 dz
6651CBL22X4	22" x 22" (55.9 x 55.9 cm)	4" (10.2 cm) round	9" x 9" (22.9 x 22.9 cm) AngelStat reinforcement	Ceil Blue	24 ea/2 dz
6651CBL34X3	34" x 34" (86.4 x 86.4 cm)	3" (7.6 cm) round	7" x 7" (17.8 x 17.8 cm) AngelStat reinforcement	Ceil Blue	24 ea/2 dz
6651CBL34X4	34" x 34" (86.4 x 86.4 cm)	4" (10.2 cm) round	9" x 9" (22.9 x 22.9 cm) AngelStat reinforcement	Ceil Blue	24 ea/2 dz



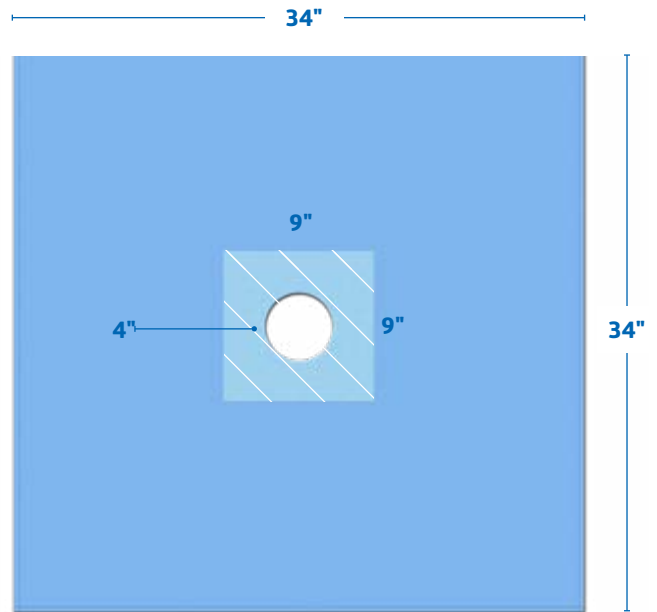
6651CBL22X3






6651CBL22X4



6651CBL34X3

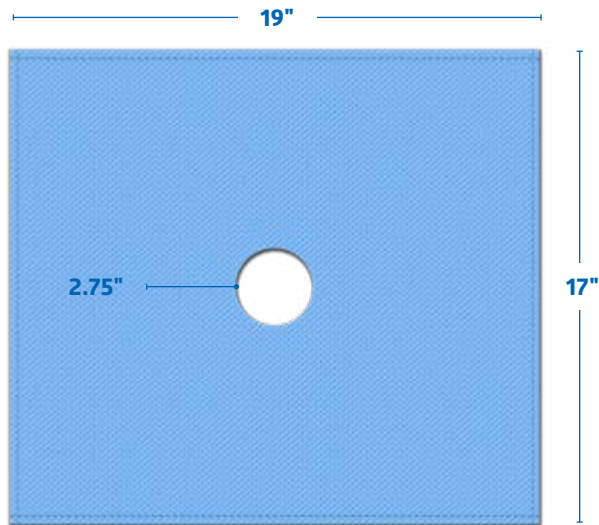


6651CBL34X4

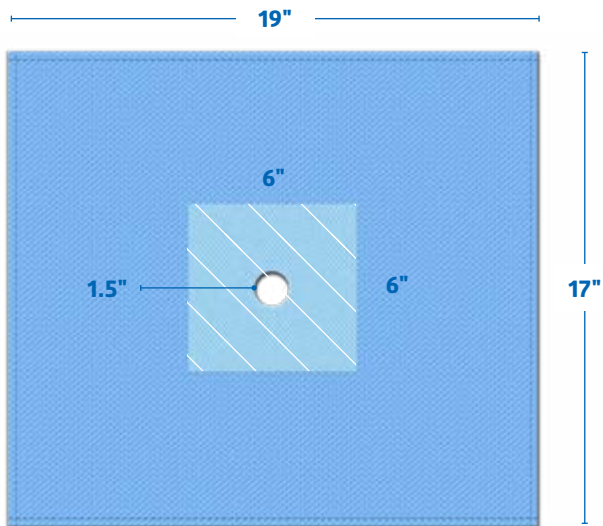
-  AngelStat
-  AngelStat reinforcement
-  Fenestrated

May be used for:

Incision and debridement (I & D), lacerations, removal of "lumps and bumps" and some ocular procedures

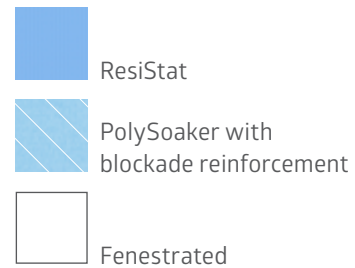


MDT013628



MDT013629

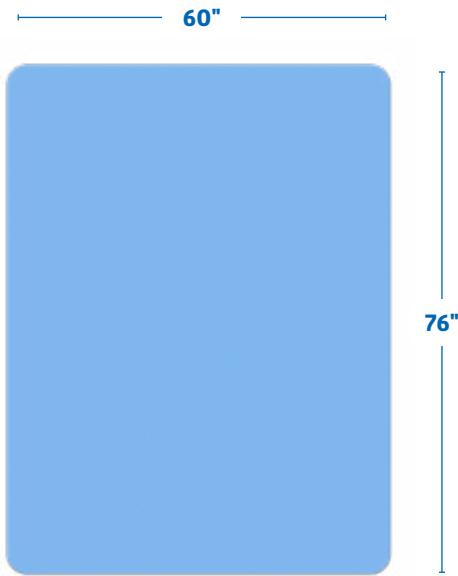
ResiStat is a fluid and static resistant polyester fabric



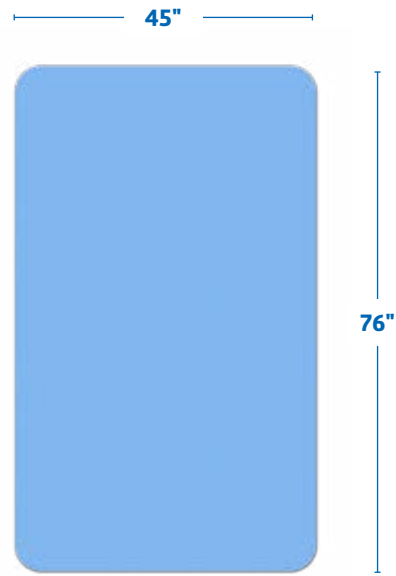
Universal drapes

- Used in procedures requiring isolated exposure

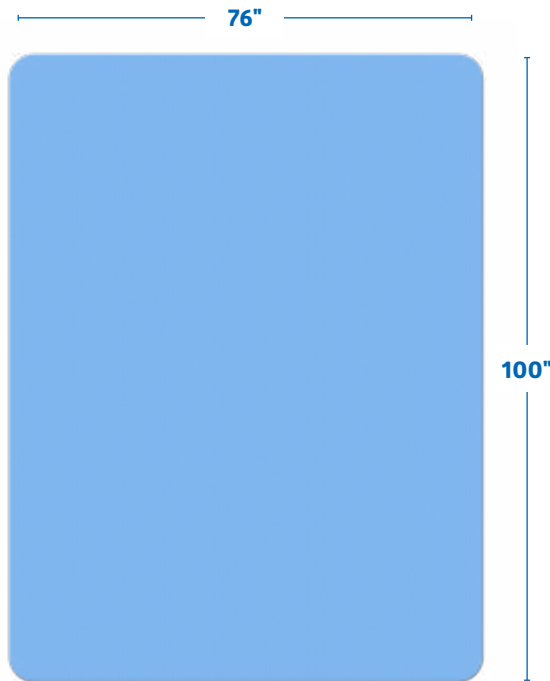
Item No.	Size	Fenestration Size	PolySoaker	Color	Pkg.
MDT013628	19" x 17" (55.9 x 55.9 cm)	2.75" (7 cm) round	—	Ceil Blue	12 ea/1 dz
MDT013629	19" x 17" (55.9 x 55.9 cm)	1.5" (3.8 cm) round	6" x 6" (15.2 x 15.2 cm) blockade reinforcement	Ceil Blue	24 ea/2 dz



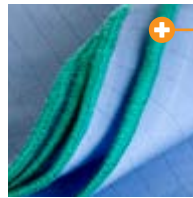
MDT013020607



MDT013020457



MDT013020761



Pearl-stitched edging



ResiStat

General purpose drape

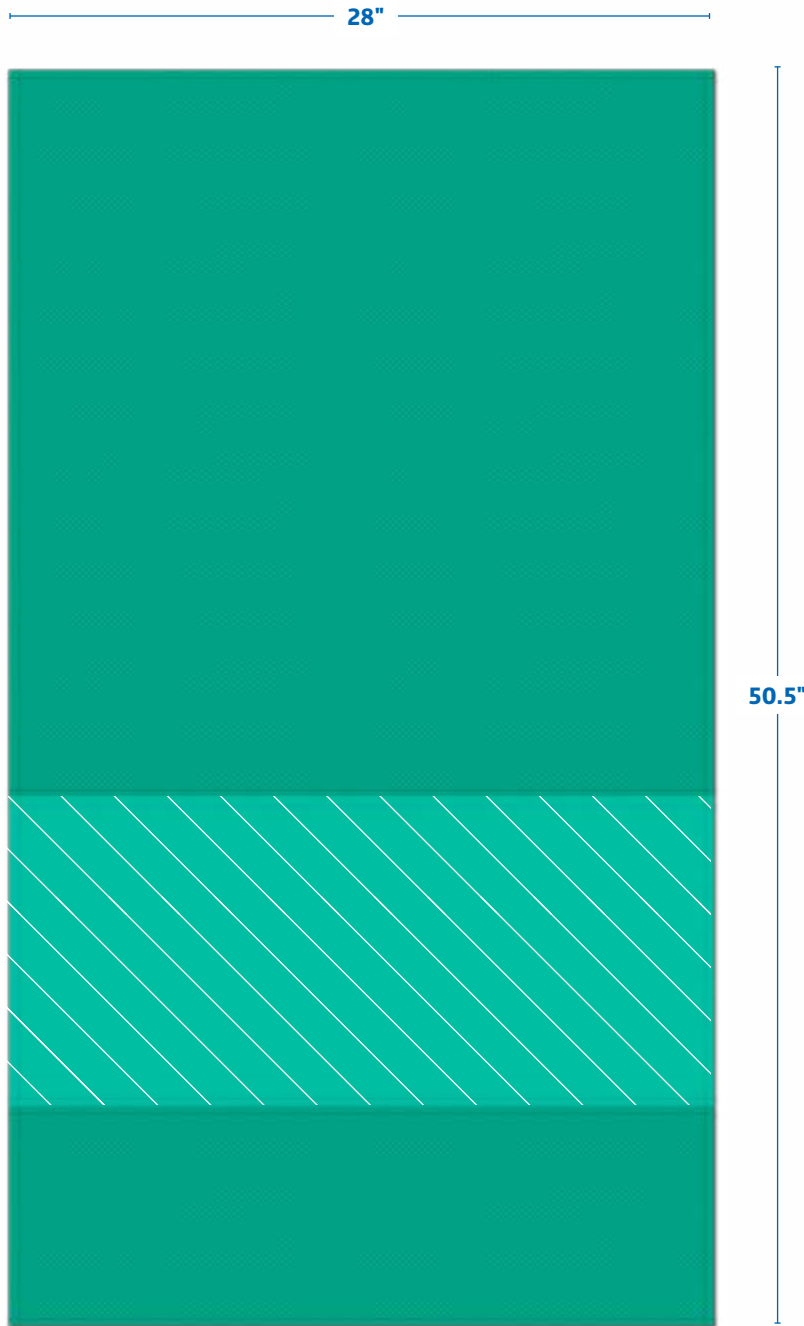
- ResiStat liquid-resistant fabric

Item No.	Description	Color	Pkg.
MDT013020607	60" x 76" (152.4 x 193 cm), Black pearl-stitched edging	Ceil Blue	12 ea/1 dz
MDT013020457	45" x 76" (114.3 x 193 cm), Jade Green pearl-stitched edging	Ceil Blue	12 ea/1 dz
MDT013020761	76" x 100" (191.8 x 25.4 cm), Pink pearl-stitched edging	Ceil Blue	12 ea/1 dz

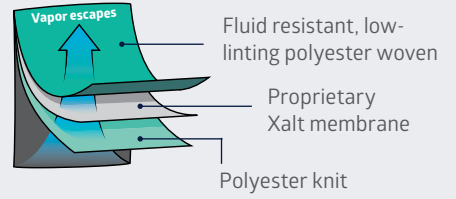


May be used for:

Minor procedures (ENT, head or neck procedures), or eye procedures



Xalt 3-layer fabric



-  ResiStat
-  ResiStat cuff over Xalt liquid-resistant

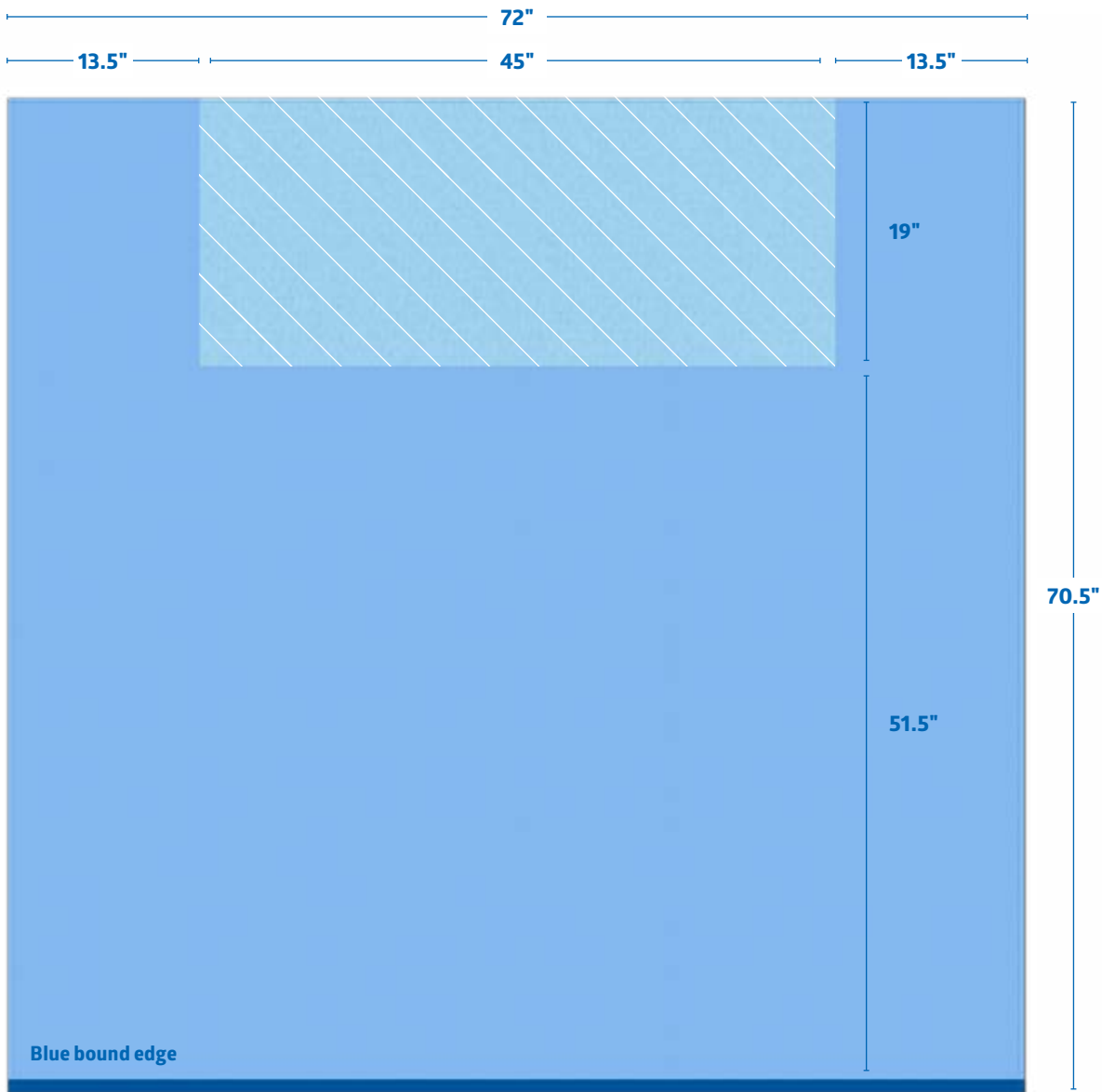
Xalt liquid-resistant underbuttocks surgical drape



- Provides a liquid-resistant barrier

Item No.	Description	Color	Pkg.
MDTDXUNDBGN	28" x 50.5" (71.1 x 128.3 cm)	Green	12 ea/1 dz

May be used for:

GYN and rectal cases



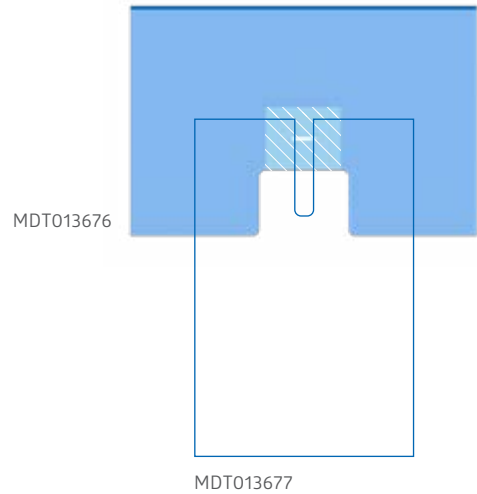
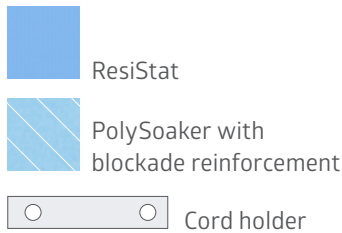
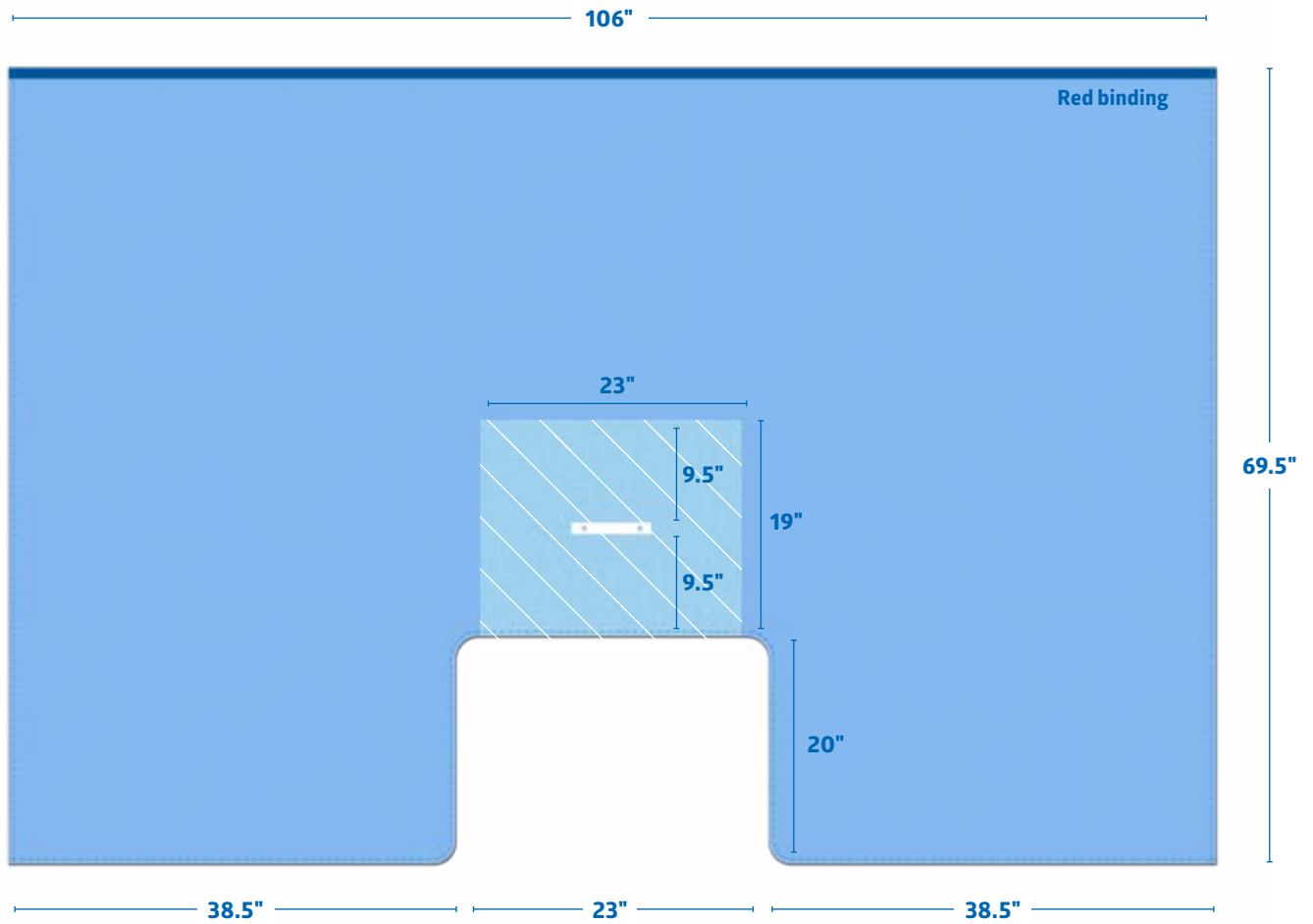
-  ResiStat
-  PolySoaker with blockade reinforcement

May be used for: Foot procedures

Complete adaptable draping system

- Used for squaring off any size area needed.
- Ideal for procedures when patients need to be on their side
- Made-to-order item

Item No.	Description	Color	Pkg.
MDT013673F	19" x 45" (48.3 x 114.3 cm) PolySoaker with blockade reinforcement	Ceil Blue	12 ea/1 dz

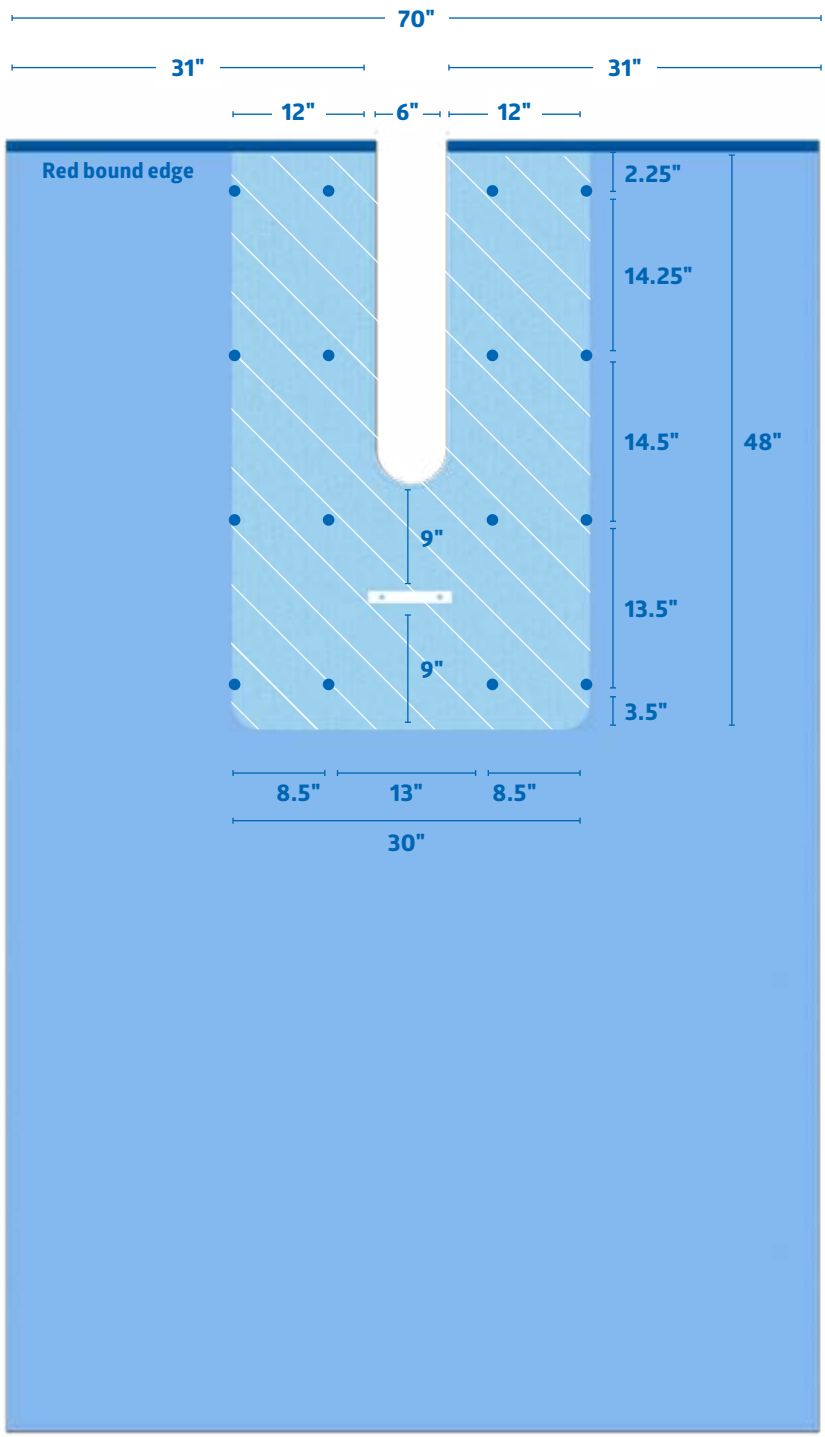






Head bar drape

- Used in conjunction with the U-shaped drape with snaps and flaps (MDT013677) to make up the U-II drape —a versatile drape system that makes it easy to adjust the fenestration to the required size
- Snap-and-flap feature helps with creating a moat for excessive fluids when lined with O.R. towels; also used for holding cords
- Made-to-order item

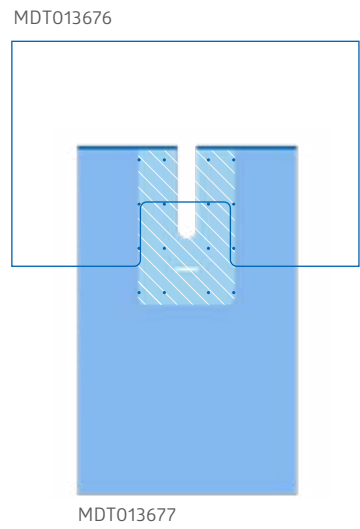
- This head drape is a component of the U-II drape system
- The other component is MDT013677
- This drape is 106" x 69.5"
- A 19" x 23" PolySoaker w/ blockade reinforcement is above the 20" x 29" U
- One cord holder is located in the middle of the PolySoaker reinforcement

Item No.	Size	PolySoaker	Color	Pkg.
MDT013676	70" x 106" (177.8 x 269 cm); 20" x 29" (50.8 x 73.7 cm) split	19" x 23" (48.3 x 58.4 cm) blockade reinforcement	Ceil Blue	12 ea/1 dz



-  ResiStat
-  PolySoaker with blockade reinforcement
-  Cord holder
-  Snaps

108"



U-Shape drape with snaps and flaps

- Used in conjunction with the head bar drape (MDT013676) to make up the U-II drape—a versatile drape system that makes it easy to adjust the fenestration to the required size
- Snap-and-flap feature helps with creating a moat for excessive fluids when lined with O.R. towels; also used for holding cords
- Made-to-order item

- This U-drape is a component of the U-II drape system
- The other component is MDT013676
- This drape is 70" x 108"
- A 6" x 28" split is surrounded by a 30" x 48" PolySoaker w/ blockade reinforcement
- Four sets of snaps located on the PolySoaker reinforcement allows the end user to create a 4 flap that can create a moat for excess fluids when lined with O.R. towels or can be used to hold cords

Item No.	Size	PolySoaker	Color	Pkg.
MDT013677	6" x 29" (15.2 x 73.7 cm) split	30" x 48" (76.2 x 121.9 cm) blockade reinforcement	Ceil Blue	12 ea/1 dz

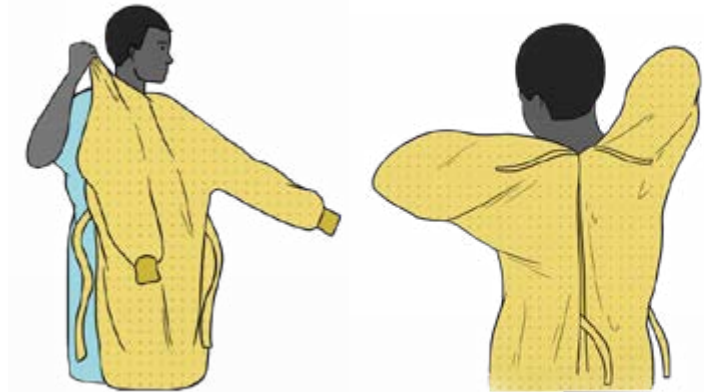
Putting on PPE

Best practices

It's important to exercise caution when removing contaminated personal protective equipment (PPE). To help minimize risk of infection, we recommend following the CDC guidelines.¹

Gown

- Cover your torso fully—from neck to knees and to the end of wrists, then wrap around your back
- Fasten at the waist and back of neck



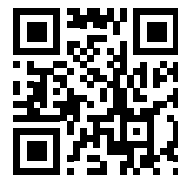
Mask

- Secure ear loops behind your ears
- Adjust flexible band to bridge of your nose
- Adjust for snug fit on face and below chin
- Fit-check mask



Four steps to reduce cross-contamination:

1. Avoid touching face with hands
2. Limit number of surfaces touched
3. Replace gloves when heavily contaminated or torn
4. Practice regular hand hygiene



3 ways to don and doff the Medline 3-hole isolation gown

Scan the code to [watch the video](#)

1. Centers for Disease Control and Prevention. How to Safely Remove Personal Protective Equipment (PPE). Available at: <https://www.cdc.gov/hai/pdfs/ppe/PPE-Sequence.pdf>. Accessed May 19, 2020.

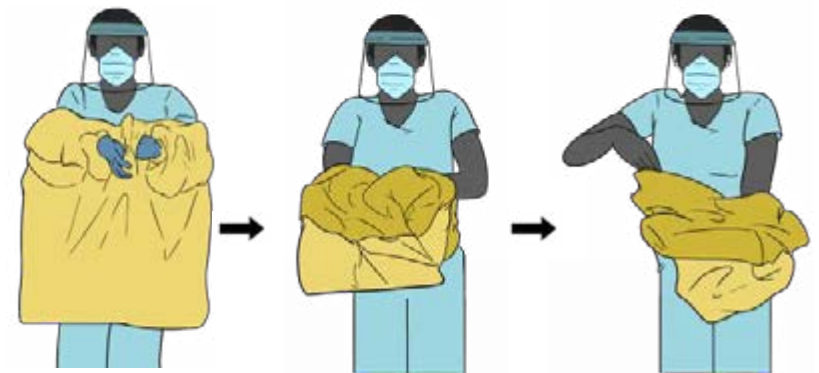
Taking off PPE

Best practices

It's important to exercise caution when removing contaminated personal protective equipment (PPE). To help minimize risk of infection, we recommend following the CDC guidelines.¹

Gown

- Using gloved hands to touch the outside of the gown only, untie the ties at the neck and the back
- As you remove the gown, fold or roll it inside-out and into a bundle
- When reaching wrists, remove gloves with the gown, only touching the inside of gloves and gown with bare hands—place gown in soiled linen hamper or laundry bag



Mask

- If wearing a respirator in a patient room, remove all other PPE, leave the room and shut the door before removing the respirator
- Discard soiled linen hamper or laundry bag



Contamination warning:

The outside of your PPE is contaminated. If your hands come in contact with these outside surfaces, immediately wash them or use an alcohol-based hand sanitizer.

1. Centers for Disease Control and Prevention. How to Safely Remove Personal Protective Equipment (PPE). Available at: <https://www.cdc.gov/hai/pdfs/ppe/PPE-Sequence.pdf>. Accessed May 19, 2020.

Exposure control plan

Each facility must have an exposure control plan in place which:



Identifies areas of occupational risk (potential exposure)



Outlines appropriate measures to prevent occupational exposure (29 CFR 1910.1030)

Surgical gowns and isolation gowns play a critical role in helping prevent exposure



Risk factors

- The presence of liquid (expected blood loss, volume of irrigation liquid);
- The pressure and type of contact (splash, spray, pooling, soaking, pressing or leaning);
- The duration of procedure (longer duration increases the likelihood of liquid and/or pressure being present);
- The type of procedure (open versus minimally invasive surgical technique, deep body cavity versus superficial incision); and
- The role of each surgical team member

AAMI PB70

The Association for the Advancement of Medical Instrumentation (AAMI) is the primary resource for industry standards.¹

AAMI PB70 classifies how well a product protects the wearer.

The Level of barrier protection range from 1 (lowest) to 4 (highest).²

What does each test measure?

AATCC 42, Spray Impact Penetration Test: This test simulates the resistance of the product to spraying or splashing fluids, such as during irrigation.³

AATCC 127, Hydrostatic Pressure Test: The test simulates the ability of the product to resist penetration when the body or arm leans or rests in contact with fluid.⁴

ASTM F1670 and ASTM F1671, Synthetic Blood and Bloodborne Pathogens Tests: These tests simulate penetration of blood and microorganisms where the body or arm may lean or rest in contact with fluid.



Test	Results
Level 4	
ASTM F1671: 2003*	Pass
ASTM F1670: 2003**	Pass
Level 3	
AATCC 42:2000	< 1.0 g
AATCC 127:1998	> 50 cm
Level 2	
AATCC 42:2000	< 1.0 g
AATCC 127:1998	> 20 cm
Level 1	
AATCC 42:2000	<4.5 g

References: **1.** www.aami.org/about/index.html **2.** AAMI. American National Standard ANSI/AAMI PB70:2012. Liquid barrier performance and classification of protective apparel and drapes intended for use in health care facilities. **3.** American Association of Textile Chemists and Colorists. AATCC 42-2013. Water Resistance: Impact Penetration Test. Available at: https://www.aatcc.org/Technical/Test_Methods/scopes/tm42.cfm. Accessed May 14, 2015. **4.** American Association of Textile Chemists and Colorists. AATCC 127-2013. Water Resistance: Hydrostatic Pressure Test. Available at: http://www.aatcc.org/technical/test_methods/scopes/tm127.cfm. Accessed May 14, 2015.

Relationships between barrier performance and risks

Level 4

ANSI/AAMI PB70 barrier performance	Anticipated risk of exposure
Fluid amount	High
Fluid splash or spray	High
Pressure on gown or drape	High

Examples of procedures with anticipated exposure risks

- Any procedure in which the surgeon's hands and arms are in a body cavity
- Orthopedic procedures without a tourniquet
- Open cardiovascular or thoracic procedures
- Trauma procedures
- Cesarean sections

Level 3

ANSI/AAMI PB70 barrier performance	Anticipated risk of exposure
Fluid amount	Moderate
Fluid splash or spray	Moderate
Pressure on gown or drape	Moderate

Examples of procedures with anticipated exposure risks

- Mastectomies
- Arthroscopic orthopedic procedures
- Endoscopic urological procedures (e.g., transurethral prostate resections)
- Open gastrointestinal and genito-urinary procedures

Level 2

ANSI/AAMI PB70 barrier performance	Anticipated risk of exposure
Fluid amount	Low
Fluid splash or spray	Low
Pressure on gown or drape	Low

Examples of procedures with anticipated exposure risks

- Tonsillectomies and adenoidectomies
- Endoscopic gastrointestinal procedures
- Simple orthopedic procedures with tourniquets
- Open hernia repair
- Minimally invasive surgery
- Interventional radiology or catheter lab procedures

Level 1

ANSI/AAMI PB70 barrier performance	Anticipated risk of exposure
Fluid amount	Minimal
Fluid splash or spray	Minimal
Pressure on gown or drape	Minimal

Examples of procedures with anticipated exposure risks

- Simple excisional biopsies
- Excision of “lumps and bumps”
- Ophthalmological procedures
- Simple ear, nose and throat (ENT) procedures



We can help

Medline's clinical specialists can analyze your surgical textile usage and recommend ways to reduce purchases, often resulting in significant savings.



**We make
healthcare
run better™**

Medline Industries, Inc.
Three Lakes Drive, Northfield, IL 60093
Medline United States | 1-800-MEDLINE (633-5463)
medline.com | info@medline.com

Medline Canada
1-800-268-2848 | medline.ca | canada@medline.com
Medline México
01-800-831-0898 | medlinemexico.com | mexico@medline.com

Follow us    

Some products may not be available for sale in Mexico or Canada. We reserve the right to correct any errors that may occur within this brochure. © 2021 Medline Industries, Inc. All rights reserved. PerforMAX is a trademark, and Medline and SteriCloth are registered trademarks of Medline Industries, Inc. Apex is a registered trademark of Little Rapids Corporation. ResiStat is a registered trademark of Shakespeare Conductive Fibers, LLC. Teflon is a registered trademark of E. I. Du Pont De Nemours and Company. Xalt is a trademark of Burlington Industries, Inc. All product names, regardless of whether or not they appear with a trademark symbol, are the property of their respective companies unless otherwise noted. MKT19W1812231 / ne20985 / 43