

HARTMANN



Cosmopor[®] Silicone

Absorbent island dressing with silicone adhesive



Versatile

- For the protection of slightly to moderately exuding wounds of all types, including acute and post surgical wounds
- Dry Barrier Technology[®] retains exudate inside the pad, preventing it from returning into the wound



Patient Friendly

- Silicone contact layer allows for atraumatic dressing changes
- Will not adhere to surgical sutures
- Water/fluid repellent backing material
- No adhesive residue left on the patient



Easy to Use

- Conforms to body contours, enabling mobility
- Simple 2-step application makes it easy to apply, even with gloves

High absorption capacity and retention

Superabsorbent fibers lock exudate inside the wound pad

Fluid-repellent

Soft non-woven backing

Exudate locking

Superabsorbent fibers

High exudate absorption

Absorptive wound pad

Gentle removal

Perforated silicone layer



Acrylic adhesives pull on the skin and hair causing pain and possible periwound damage



The silicone adhesive of **Cosmopor[®] Silicone** helps prevent stress or pain to the skin

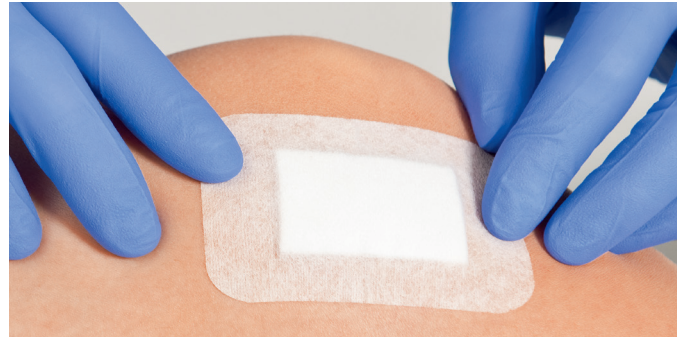
Cosmopor® Silicone

Increases caregivers confidence

STRONG ON

Wound dressings are expected to provide reliable protection while also being:

- Easy to apply
- Absorptive
- Breathable
- Comfortable



GENTLE OFF

Gentle removal of the dressing allows for:

- Low wound disturbance
- Residue free
- Painless removal



QR

Cosmopor® Silicone

Order Number	Dressing Size/ Pad Size	Dressing Per Box	HCPCS Code
901106	2" x 2.8" / 1" x 1.6"	10	Pending
901107	3.2" x 4" / 1.5" x 2.6"	10	Pending
901108	3.2" x 6" / 1.5" x 4.3"	10	Pending
901109	4" x 8" / 2.2" x 6.3"	10	Pending



Contact your local HARTMANN representative, or visit us at www.hartmannusa.com for more information.

HARTMANN USA, Inc.
Rock Hill, SC 29730
1-800-243-2294

www.hartmannusa.com

XLIT 3000 Rev. 1 (0922)



Helps. Cares. Protects.