

Optifoam[®] Gentle Heel

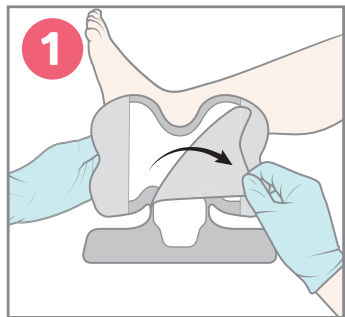
Silicone faced foam and border



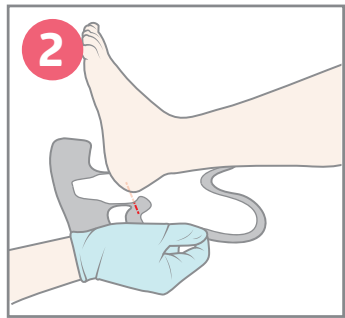
Application instructions

Optifoam is ideal for partial and full-thickness wounds with drainage.

Application:



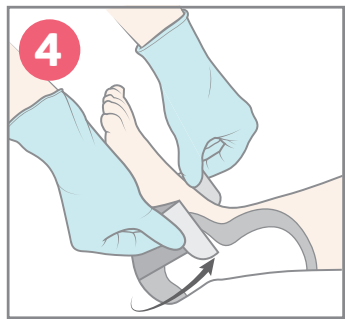
1 Remove center release liner from dressing and slide the dressing under the heel.



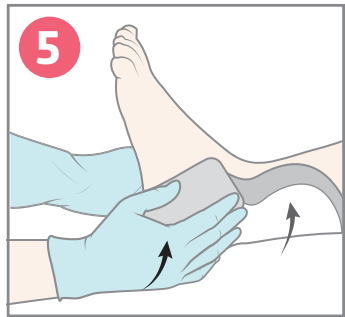
2 Position dressing at base of heel (as shown to the right). Apply the adherent part of the dressing to the posterior heel/Achilles tendon.



3 Remove backing from the top left and right ankle lobes. Apply and smooth.

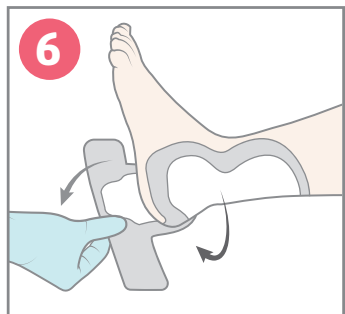


4 Remove backing from the bottom flaps. Apply and smooth upward towards malleolus.



5 Press and smooth dressing throughout to ensure adherence to skin.

Skin check:



6 To perform skin check: gently release bottom flaps from skin and peel back towards Achilles until enough skin is exposed for skin check.



Removal:

- 1** Gently pull bottom flaps to release dressing from skin.
- 2** Gently release flaps covering ankle lobes.
- 3** Continue gentle release of dressing until completely removed.

For more information, see product packaging, contact your Medline Representative or call 1-800-MEDLINE (1-800-633-5463).



Scan QR code to view the Optifoam Gentle heel application video.

Make skin health second nature

Find more skin health insights and expertise at [medlineskinhealth.com](https://www.medlineskinhealth.com)