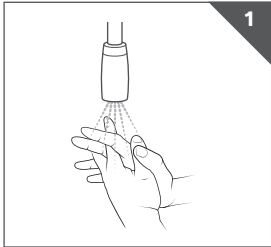


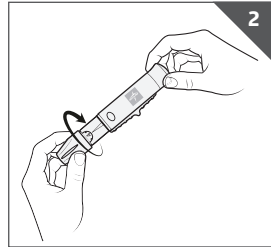
Adjustable Lancing Device with Ejector



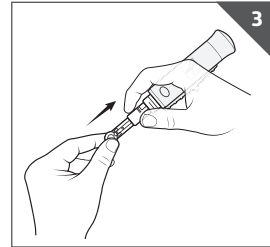
Instructions for Use:



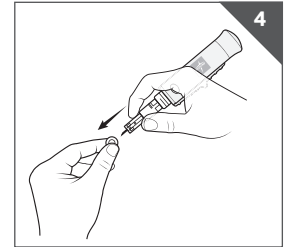
1
Wash hands with warm water and soap. Dry thoroughly. Disinfect using an alcohol prep pad, ensure the finger is completely dry prior to lancing. Healthcare professionals, wear gloves prior to disinfecting the lancing site and completing the lancing procedure following the facility's protocol.



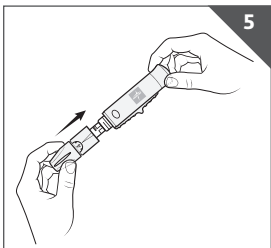
2
Remove the lancing device cap, by twisting it off.



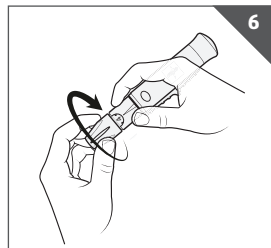
3
Insert a new lancet securely into the lancet holder.



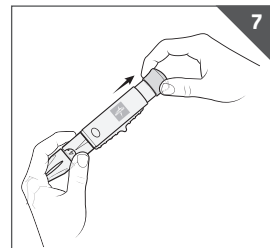
4
Remove the lancet cover. Do not discard cover.



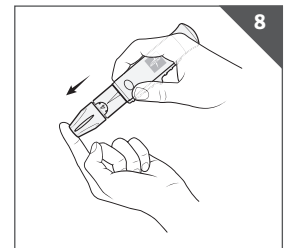
5
Place the cap back onto the lancing device.



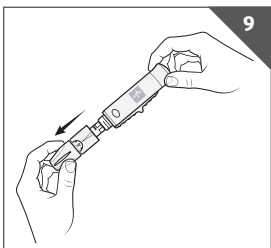
6
Select the desired depth of penetration to get a blood sample with the least amount of discomfort. Select the depth by turning the adjustable comfort cap on the lancing device.



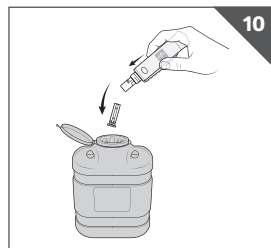
7
Hold the lancing device in one hand. Pull the sliding barrel out with your other hand until an audible click is heard. The lancing device is now loaded and ready to use.



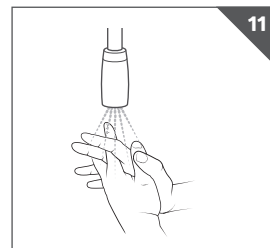
8
Place the lancing device against the side of your fingertip. Press the release button.



9
Remove the lancing device cap when finished. Put the cover back onto the exposed needle of the lancet.



10
To eject lancet, point the lancing device into an approved sharps container in accordance with facility guidelines and local regulations and slide the lancet ejector forward.



11
The user should wash hands with warm water and soap after safe disposal of the safety lancet.

Lancing Depth Guide:

The lancing device has 9 penetration depths. Turn the the depth dial to the desired lancing depth. Number 1 for soft/thin skin, number 3 for average skin, number 5 for thick/calloused skin, and finer adjustments can be made by setting the arrow between numbers.

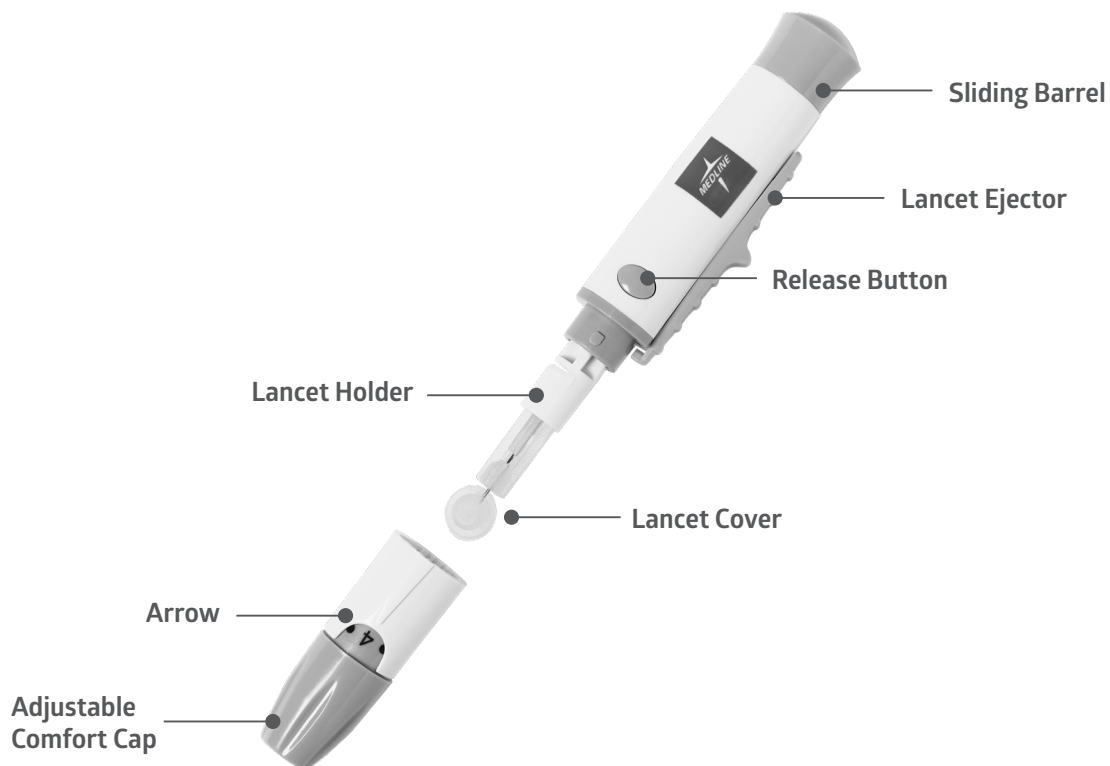
Adjustable Lancing Device with Ejector



Cleaning and Disinfecting Your Lancing Device and Cap

To clean, use only Super Sani-cloth wipes (EPA* reg.no.9480-4), thoroughly wipe the entire outside surface of the lancing device with one wipe. Twist off the end cap of the lancing device. Remove and wipe the inside of the end cap. Discard the used wipe. Use a fresh Super Sani-Cloth wipe and wipe the entire outside surface of the lancing device in circles 4 times. To disinfect, use a fresh wipe to make sure that all outside surfaces of the lancing device stay wet by patting with the wipe for 2 minutes. Discard the used wipe and let the lancing device air dry completely before using.

Non-Sterile. Single patient use. Not made with Natural Rubber Latex.



WARNING: For use only on a single patient.

Discard lancet after use. Lancets are for single use only. Always use a new sterile lancet.

Reuse of lancets can dull or bend the tip of the lancet, causing damage to your skin, scarring, and greater pain.

Improper use of blood lancets can increase the risk of inadvertent transmission of blood-borne pathogens, particularly in settings where multiple patients are tested.

Risk of injury: If the penetration depth is too deep, the puncture can cause injury to children.

Before using the lancing device for the first time on children, ask your healthcare professional. Start with the lowest penetration depth.

Patients younger than 18 years old should be supervised by adults when using the lancing device, or adults should perform the procedure on patients younger than 18 years old.

To reduce the chance of infection:

Disinfect puncture site with alcohol prep pad.

Keep your lancing device clean.

Always use a new, sterile lancet.

REF MPHLANCINGPN2

www.medline.com ©2023 Medline Industries, LP
Manufactured in China for: Medline Industries, LP, Three Lakes Drive,
Northfield, IL 60093 USA. 1-800-MEDLINE V1 RD23SUF