

# Lab Coats

Tailored to meet the needs of healthcare professionals.



# Elevate comfort, style and performance with the latest lab coats

Feel great, look great, and perform at your best with lab coats designed to offer more style and functionality in every stitch. They're made for movers and doers like you, with enhanced features to keep you comfortable and confident, no matter what the day brings, in a variety of fits and sizes.

Front cover features (L-R) Refine full-length style 2437, Propel consultation-length style 3410 and Perform staff-length style 1520.

Back cover features (L-R) Perform consultation-length style 1410, Refine full-length style 2539 and Propel staff-length style 3422.

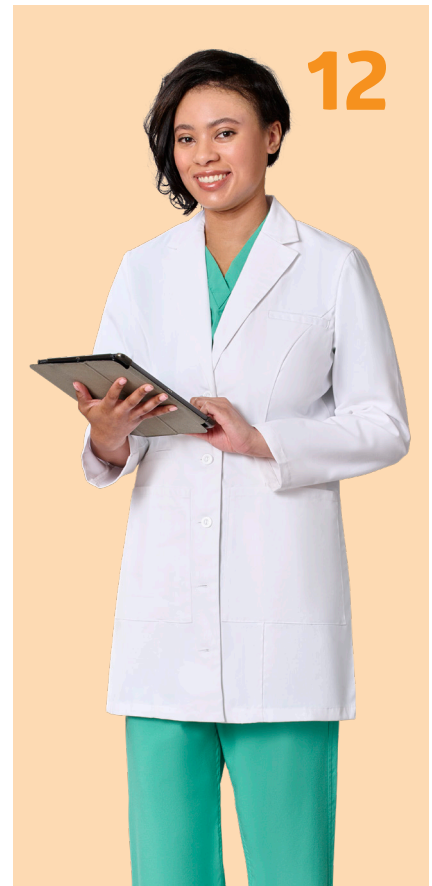
**Experience redefined comfort and quality with reliable stretch, premium fabric, and smart sizing.**



**Propel™**  
Setting the market standard for quality and value



**Refine™**  
Ideal for professionals who prefer natural fibers

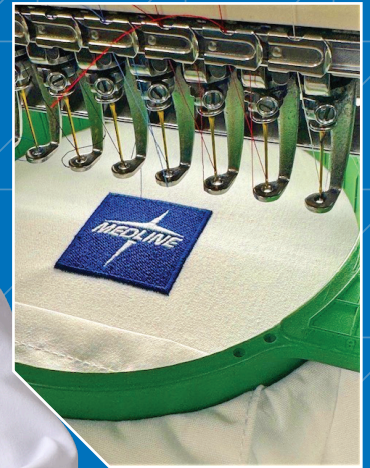


**Perform™**  
Premium fabric blend for enhanced stretch and comfort

**4** Embroidery

**15** Sizing Charts

In-house embroidery services tailored to your facility's needs.



# Create a look that's all your own

Personalize your lab coats with custom embroidery.

Our dedicated embroidery services team makes it easy to add a personal touch with your facility's logo and/or individual names.

Ready to get started? We'll walk you through the process thread to thread.

Contact us at [eorders@medline.com](mailto:eorders@medline.com) or 844-366-1685.

# Propel™

## Setting the market standard for quality and value.

- Alpha sizing for a simplified sizing experience
- 80% polyester, 20% cotton blend offers durability and comfort
- Available in consultation, consultation smock, staff-, and full-length styles



Propel

3521WHTL  
See page 7

# Consultation Length

## Unisex Propel 4-Pocket Consultation Lab Coats



- One Chest Pocket
- One Pen Pocket
- Two Lower Pockets

Item No.	Size	Pkg.
3410WHT2XS	2X-Small	1 ea
3410WHTXS	X-Small	1 ea
3410WHTS	Small	1 ea
3410WHTM	Medium	1 ea
3410WHTL	Large	1 ea
3410WHTXL	X-Large	1 ea
3410WHT2XL	2X-Large	1 ea
3410WHT3XL	3X-Large	1 ea
3410WHT4XL	4X-Large	1 ea
3410WHT5XL	5X-Large	1 ea



**Convenient pen pocket** with a 1" bartack reinforcement to help prevent the pocket from tearing or fraying over time



**Four buttons** at center front for enhanced adjustability



**Squared-edge pockets** offer a clean, structured look, with easy accessibility



**Two-piece sleeves** for better fit and greater mobility



**Center back seam** for improved fit and shaping

## Unisex Propel 4-Pocket Consultation Smocks



- One Chest Pocket
- One Pen Pocket
- Two Lower Pockets

Item No.	Size	Pkg.
3415WHT2XS	2X-Small	1 ea
3415WHTXS	X-Small	1 ea
3415WHTS	Small	1 ea
3415WHTM	Medium	1 ea
3415WHTL	Large	1 ea
3415WHTXL	X-Large	1 ea
3415WHT2XL	2X-Large	1 ea
3415WHT3XL	3X-Large	1 ea
3415WHT4XL	4X-Large	1 ea
3415WHT5XL	5X-Large	1 ea



**Convenient pen pocket** with a 1" bartack reinforcement to help prevent the pocket from tearing or fraying over time



**Front zipper** allows for quick and easy wearing and removal



**Squared-edge pockets** offer a clean, structured look, with easy accessibility



**Lapel** adds style and structure, and enhances garment functionality and fit

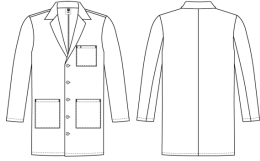


**Stitched down back waistband with pleats** for a neater, more tailored fit

See page 15 for sizing details.

# Staff Length

## Men's/Unisex Propel 4-Pocket Staff-Length Lab Coats



- One Chest Pocket
- One Pen Pocket
- Two Lower Pockets

Item No.	Tall Item No.	Size	Pkg.
3422WHT2XS	3422WHT2XST	2X-Small	1 ea
3422WHTXS	3422WHTXST	X-Small	1 ea
3422WHTS	3422WHTST	Small	1 ea
3422WHTM	3422WHTMT	Medium	1 ea
3422WHTL	3422WHTLT	Large	1 ea
3422WHTXL	3422WHTXLT	X-Large	1 ea
3422WHT2XL	3422WHT2XLT	2X-Large	1 ea
3422WHT3XL	3422WHT3XLT	3X-Large	1 ea
3422WHT4XL	3422WHT4XLT	4X-Large	1 ea
3422WHT5XL	3422WHT5XLT	5X-Large	1 ea



**Convenient pen pocket** with a 1" bartack reinforcement to help prevent the pocket from tearing or fraying over time



**Side slits** for easy access to pant pockets



**Squared-edge pockets** offer a clean, structured look, with easy accessibility



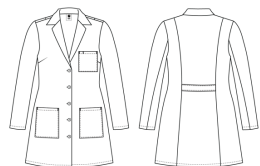
**Two-piece sleeves** for better fit and greater mobility



**Center back seam** enhances fit and structure

Propel

## Women's Propel 4-Pocket Staff-Length Lab Coats



- One Chest Pocket
- One Pen Pocket
- Two Lower Pockets

Item No.	Tall Item No.	Size	Pkg.
3521WHT2XS	3521WHT2XST	2X-Small	1 ea
3521WHTXS	3521WHTXST	X-Small	1 ea
3521WHTS	3521WHTST	Small	1 ea
3521WHTM	3521WHTMT	Medium	1 ea
3521WHTL	3521WHTLT	Large	1 ea
3521WHTXL	3521WHTXLT	X-Large	1 ea
3521WHT2XL	3521WHT2XLT	2X-Large	1 ea
3521WHT3XL	3521WHT3XLT	3X-Large	1 ea
3521WHT4XL	3521WHT4XLT	4X-Large	1 ea
3521WHT5XL	3521WHT5XLT	5X-Large	1 ea



**Convenient pen pocket** with a 1" bartack reinforcement to help prevent the pocket from tearing or fraying over time



**Bust darts** for a more flattering silhouette



**Squared-edge pockets** offer a clean, structured look, with easy accessibility



**Two-piece sleeves** for better fit and greater mobility



**Stitched down back waistband** for a neater, more tailored fit

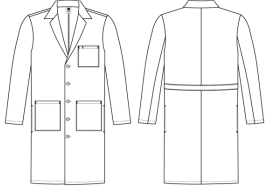


**Side slits** for easy access to pant pockets

See page 15 for sizing details.

# Full Length

## Men's/Unisex Propel 4-Pocket Full-Length Lab Coats



- One Chest Pocket
- One Pen Pocket
- Two Lower Pockets

Item No.	Tall Item No.	Size	Pkg.
3434WHT2XS	3434WHT2XST	2X-Small	1 ea
3434WHTXS	3434WHTXST	X-Small	1 ea
3434WHTS	3434WHTST	Small	1 ea
3434WHTM	3434WHTMT	Medium	1 ea
3434WHTL	3434WHTLT	Large	1 ea
3434WHTXL	3434WHTXLT	X-Large	1 ea
3434WHT2XL	3434WHT2XLT	2X-Large	1 ea
3434WHT3XL	3434WHT3XLT	3X-Large	1 ea
3434WHT4XL	3434WHT4XLT	4X-Large	1 ea
3434WHT5XL	3434WHT5XLT	5X-Large	1 ea



**Convenient pen pocket** with a 1" bartack reinforcement to help prevent the pocket from tearing or fraying over time



**Two-piece sleeves** for better fit and greater mobility



**Squared-edge pockets** offer a clean, structured look, with easy accessibility



**Center back seam** enhances fit and structure

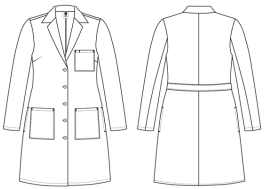


**Stitched down back waistband** for a neater, more tailored fit



**Side slits** for easy access to pant pockets

## Women's Propel 4-Pocket Full-Length Lab Coats



- One Chest Pocket
- One Pen Pocket
- Two Lower Pockets

Item No.	Tall Item No.	Size	Pkg.
3533WHT2XS	3533WHT2XST	2X-Small	1 ea
3533WHTXS	3533WHTXST	X-Small	1 ea
3533WHTS	3533WHTST	Small	1 ea
3533WHTM	3533WHTMT	Medium	1 ea
3533WHTL	3533WHTLT	Large	1 ea
3533WHTXL	3533WHTXLT	X-Large	1 ea
3533WHT2XL	3533WHT2XLT	2X-Large	1 ea
3533WHT3XL	3533WHT3XLT	3X-Large	1 ea
3533WHT4XL	3533WHT4XLT	4X-Large	1 ea
3533WHT5XL	3533WHT5XLT	5X-Large	1 ea



**Convenient pen pocket** with a 1" bartack reinforcement to help prevent the pocket from tearing or fraying over time



**Bust darts** for enhanced fit and structure



**Squared-edge pockets** offer a clean, structured look, with easy accessibility



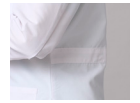
**Five center front buttons** and stitched down back waistband for elevated style



**Two-piece sleeves** for better fit and greater mobility



**Center back seam** enhances fit and structure



**Stitched down back waistband** for a neater, more tailored fit

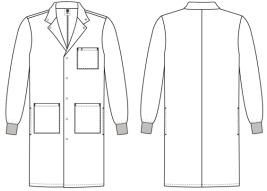


**Side slits** for easy access to pant pockets

See page 15 for sizing details.

# Full Length

## Unisex Propel 4-Pocket Full-Length Lab Coats with Knit Cuffs and Snap Buttons



- One Chest Pocket
- One Pen Pocket
- Two Lower Pockets

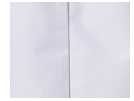
Item No.	Size	Pkg.
3436WHT2XS	2X-Small	1 ea
3436WHTXS	X-Small	1 ea
3436WHTS	Small	1 ea
3436WHTM	Medium	1 ea
3436WHTL	Large	1 ea
3436WHTXL	X-Large	1 ea
3436WHT2XL	2X-Large	1 ea
3436WHT3XL	3X-Large	1 ea
3436WHT4XL	4X-Large	1 ea
3436WHT5XL	5X-Large	1 ea



**Convenient pen pocket** with a 1" bar tack reinforcement to help prevent the pocket from tearing or fraying over time



**Squared-edge pockets** offer a clean, structured look, with easy accessibility



**Center back seam** enhances fit and structure



**Side slits** for easy access to pant pockets

Propel



**Strategically placed snaps on collar** for polished design and comfort



**Knit cuffs** help keep the sleeves in place, preventing them from sliding backward and exposing the skin



See page 15 for sizing details.

# Refine™

Ideal for professionals  
who prefer natural fibers.

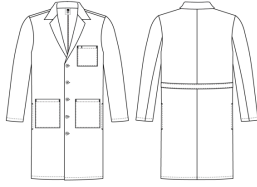
- A classic, timeless look
- Alpha sizing for a simplified sizing experience
- 100% cotton for a soft, breathable feel
- Available in full-length style



2437WHTM  
See page 11

# Full Length

## Men's/Unisex Refine 4-Pocket Full-Length Lab Coats



- **One Chest Pocket**
- **One Pen Pocket**
- **Two Lower Pockets**

Item No.	Tall Item No.	Size	Pkg.
2437WHT2XS	2437WHT2XST	2X-Small	1 ea
2437WHTXS	2437WHTXST	X-Small	1 ea
2437WHTS	2437WHTST	Small	1 ea
2437WHTM	2437WHTMT	Medium	1 ea
2437WHTL	2437WHTLT	Large	1 ea
2437WHTXL	2437WHTXLT	X-Large	1 ea
2437WHT2XL	2437WHT2XLT	2X-Large	1 ea
2437WHT3XL	2437WHT3XLT	3X-Large	1 ea
2437WHT4XL	2437WHT4XLT	4X-Large	1 ea
2437WHT5XL	2437WHT5XLT	5X-Large	1 ea



**Convenient pen pocket** with a 1" bar tack reinforcement to help prevent the pocket from tearing or fraying over time



**Squared-edge pockets** offer a clean, structured look, with easy accessibility



**Five center front knot buttons** for an elevated style

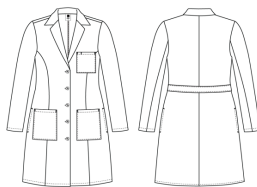


**Stitched down back waistband** for a neater, more tailored fit



**Side slits** for easy access to pant pockets

## Women's Refine 4-Pocket Full-Length Lab Coats



- **One Chest Pocket**
- **One Pen Pocket**
- **Two Lower Pockets**

Item No.	Size	Pkg.
2539WHT2XS	2X-Small	1 ea
2539WHTXS	X-Small	1 ea
2539WHTS	Small	1 ea
2539WHTM	Medium	1 ea
2539WHTL	Large	1 ea
2539WHTXL	X-Large	1 ea
2539WHT2XL	2X-Large	1 ea
2539WHT3XL	3X-Large	1 ea
2539WHT4XL	4X-Large	1 ea
2539WHT5XL	5X-Large	1 ea



**Convenient pen pocket** with a 1" bartack reinforcement to help prevent the pocket from tearing or fraying over time



**Squared-edge pockets** offer a clean, structured look, with easy accessibility



**Five center front knot buttons** for an elevated style



**Side slits** for easy access to pant pockets



**Two-piece sleeves** for better fit and greater mobility



**Center back seam** enhances fit and structure



**Stitched down back waistband** for a neater, more tailored fit

See page 15 for sizing details.

# Perform™

## Premium fabric blend for enhanced stretch and comfort.

- Highest performance lab coat
- Premium fabric blend of 58% cotton, 28% polyester and 14% elasterell-P
- Antimicrobial and soil release properties for enhanced safety and appearance†
- Larger lower pockets designed to fit iPads
- Available in consultation and staff-length styles

† Antimicrobial properties are built in to protect the product. The product does not protect users or others against bacteria, viruses, germs or other disease-causing organisms.



1420WHTL  
See page 14

# Consultation Length

## Men's/Unisex Perform 6-Pocket Consultation Lab Coats

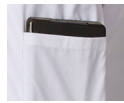


- One Chest Pocket
- One Pen Pocket
- One Phone Pocket
- Two Lower Pockets
- One Internal Pocket

Item No.	Size	Pkg.
1410WHT2XS	2X-Small	1 ea
1410WHTXS	X-Small	1 ea
1410WHTS	Small	1 ea
1410WHTM	Medium	1 ea
1410WHTL	Large	1 ea
1410WHTXL	X-Large	1 ea
1410WHT2XL	2X-Large	1 ea
1410WHT3XL	3X-Large	1 ea
1410WHT4XL	4X-Large	1 ea
1410WHT5XL	5X-Large	1 ea



**Convenient pen pocket** with a 1" bartack reinforcement to help prevent the pocket from tearing or fraying over time



**Lower patch pockets** accommodate an iPad to enhance convenience and functionality



**Dedicated phone pocket** for quick communication access while maintaining a professional appearance



**Adjustable back waist with internal elastic** offers flexibility, comfort, and a customized fit, to balance professional style with practical wearability

Perform

## Women's Perform 5-Pocket Consultation Lab Coats



- One Chest Pocket
- One Phone Pocket
- Two Lower Pockets
- One Internal Pocket

Item No.	Size	Pkg.
1510WHT2XS	2X-Small	1 ea
1510WHTXS	X-Small	1 ea
1510WHTS	Small	1 ea
1510WHTM	Medium	1 ea
1510WHTL	Large	1 ea
1510WHTXL	X-Large	1 ea
1510WHT2XL	2X-Large	1 ea
1510WHT3XL	3X-Large	1 ea
1510WHT4XL	4X-Large	1 ea
1510WHT5XL	5X-Large	1 ea



**Vertical bust/waist darts** offer a more fitted, shaped, and flattering silhouette



**Lower patch pockets** accommodate an iPad to enhance convenience and functionality



**Dedicated phone pocket** for quick communication access while maintaining a professional appearance



See page 15 for sizing details.

# Staff Length

## Men's/Unisex Perform 6-Pocket Staff-Length Lab Coats



- One Chest Pocket
- One Pen Pocket
- One Phone Pocket
- Two Lower Pockets
- One Internal Pocket

Item No.	Size	Pkg.
1420WHT2XS	2X-Small	1 ea
1420WHTXS	X-Small	1 ea
1420WHTS	Small	1 ea
1420WHTM	Medium	1 ea
1420WHTL	Large	1 ea
1420WHTXL	X-Large	1 ea
1420WHT2XL	2X-Large	1 ea
1420WHT3XL	3X-Large	1 ea
1420WHT4XL	4X-Large	1 ea
1420WHT5XL	5X-Large	1 ea



**Convenient pen pocket** with a 1" bartack reinforcement to help prevent the pocket from tearing or fraying over time



**Lower patch pockets** accommodate an iPad to enhance convenience and functionality



**Dedicated phone pocket** for quick communication access while maintaining a professional appearance



**Adjustable back waist with internal elastic** offers flexibility, comfort, and a customized fit, to balance professional style with practical wearability



**Side slits** for easy access to pant pockets

## Women's Perform 6-Pocket Staff-Length Lab Coats



- One Chest Pocket
- One Phone Pocket
- Four Lower Pockets

Item No.	Size	Pkg.
1520WHT2XS	2X-Small	1 ea
1520WHTXS	X-Small	1 ea
1520WHTS	Small	1 ea
1520WHTM	Medium	1 ea
1520WHTL	Large	1 ea
1520WHTXL	X-Large	1 ea
1520WHT2XL	2X-Large	1 ea
1520WHT3XL	3X-Large	1 ea
1520WHT4XL	4X-Large	1 ea
1520WHT5XL	5X-Large	1 ea



**Vertical bust/waist darts** offer a more fitted, shaped, and flattering silhouette



**Lower patch pockets** accommodate an iPad to enhance convenience and functionality



**Dedicated phone pocket** for quick communication access while maintaining a professional appearance



**Side slits** for easy access to pant pockets



See page 15 for sizing details.

# Sizing Charts

For the most accurate results, measure yourself in your underwear using a flexible measuring tape. If your measurements are in between those listed in this chart, go with the next size up.

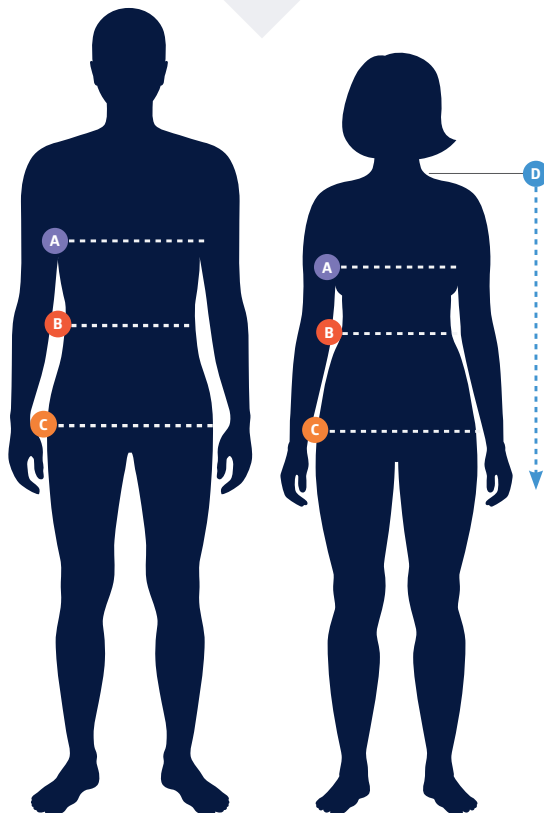
## Men's/Unisex

	2XS/T	XS/T	S/T	M/T	L/T	XL/T	2XL/T	3XL/T	4XL/T	5XL/T
<b>Chest</b>	32"-34"	34"-36"	36"-38"	38"-40"	42"-44"	46"-48"	50"-52"	54"-56"	58"-60"	62"-64"
<b>Waist</b>	26"-28"	28"-30"	30"-32"	32"-34"	36"-38"	42"-44"	46"-48.5"	50.5"-53"	55"-57.5"	59.5"-62"
<b>Hips</b>	32"-34"	34"-36"	36"-38"	38"-40"	41.5"-43"	44.5"-46"	47.5"-49"	51"-53"	55"-57"	59"-61"

## Women's

	2XS (00-0)	XS (2-4)	S (6-8)	M (10-12)	L (14-16)	XL (16W)	2XL (20W)	3XL (24W)	4XL (28W)	5XL (32W)
<b>Bust</b>	30"-32.5"	33"-34.5"	35"-36.5"	37"-39"	40"-42"	42.5"-45"	45.5"-48"	49"-52"	53"-56"	57"-60"
<b>Waist</b>	24"-25.5"	26"-27.5"	28"-29.5"	30"-32"	32.5"-35"	36"-39"	40"-43"	44"-47"	48"-51"	52"-55"
<b>Hips</b>	33"-34.5"	35"-36.5"	37"-38.5"	40"-41"	41.5"-43.5"	44"-46.5"	47"-50"	51"-54"	55"-58"	59"-62"

- A Chest/Bust:** Measure around the fullest part of your chest/bust
- B Waist:** Measure around the natural waist, where your body bends side to side
- C Hips:** Measure around the fullest part of your hips



## Lab Coat Lengths

- D** Center back length taken from back nape (excluding collar) to sweep hem

### Men's/Unisex

	Consultation	Staff	Staff Tall	Full	Full Tall
<b>2XS</b>	31.25"	35.25"	37.25"	40.25"	42.25"
<b>XS</b>	31.5"	35.5"	37.5"	40.5"	42.5"
<b>S</b>	31.75"	35.75"	37.75"	40.75"	42.75"
<b>M</b>	32"	36"	38"	41"	43"
<b>L</b>	32.5"	36.5"	38.5"	41.5"	43.5"
<b>XL</b>	33"	37"	39"	42"	44"
<b>2XL</b>	33.5"	37.5"	39.5"	42.5"	44.5"
<b>3XL</b>	34"	38"	40"	43"	45"
<b>4XL</b>	34.5"	38.5"	40.5"	43.5"	45.5"
<b>5XL</b>	35"	39"	41"	44"	46"

### Women's

	Consultation	Staff	Staff Tall	Full	Full Tall
<b>2XS</b>	29"	33"	35"	38"	40"
<b>XS</b>	29.25"	33.25"	35.25"	38.25"	40.25"
<b>S</b>	29.5"	33.5"	35.5"	38.5"	40.5"
<b>M</b>	30"	34"	36"	39"	41"
<b>L</b>	30.5"	34.5"	36.5"	39.5"	41.5"
<b>XL</b>	31"	35"	37"	40"	42"
<b>2XL</b>	31.5"	35.5"	37.5"	40.5"	42.5"
<b>3XL</b>	32"	36"	38"	41"	43"
<b>4XL</b>	32.5"	36.5"	38.5"	41.5"	43.5"
<b>5XL</b>	33"	37"	39"	42"	44"

# Outfit your team today.



Contact your  
Medline  
Representative  
to order or call  
**1-800-MEDLINE.**



**We make  
healthcare  
run better®**

Medline Industries, LP | 1-800-MEDLINE (633-5463) | [www.medline.com](http://www.medline.com)

© 2025 Medline Industries, LP. All rights reserved. Perform, Propel and Refine are trademarks and Medline is a registered trademark of Medline Industries, LP. All product names, regardless of whether or not they appear with a trademark symbol, are the property of their respective companies unless otherwise noted. MKT19W6912800 / LIT823R / 1M / DP / 23