

# Reusable Barrier Lab Coats

Added protection to keep staff safe all day long.



**Work with  
confidence**

# All-around protection when and where you need it most

Laboratory workers are exposed to numerous potential hazards in their work environment. That's why we make our reusable barrier lab coats liquid-resistant and highly durable. Available in unisex, and men's and women's styles, they come in a variety of colors to meet every situation.

- Water resistant (tested to AATCC 127 and AATCC 42)
- Comfortable and breathable (tested to ASTM E96)
- Not made with PFOS/PFOA
- Low linting (ISO 19073-10)



Durable



Industrial laundry  
100 wash cycles



Breathable



Water resistant



Low-linting



MDT046811

# Unisex Barrier Lab Coat

- Fluid-repellant finish
- 100% polyester front, 55% cotton/45% polyester back
- Reinforced front snap closure is concealed
- Collar can be worn open or snapped closed
- Openings to access pants pockets

Also available in short length styles:  
MDT046883\*  
Sizes XS-L  
6602BQW\*  
Sizes XS-3XL

55% cotton/45% polyester back

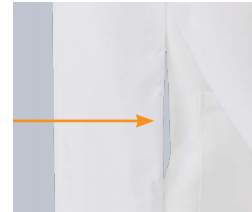
100% polyester front with fluid-repellant finish

Available with or without pockets

6623BQW



Snaps at collar



Opening to access pants pockets

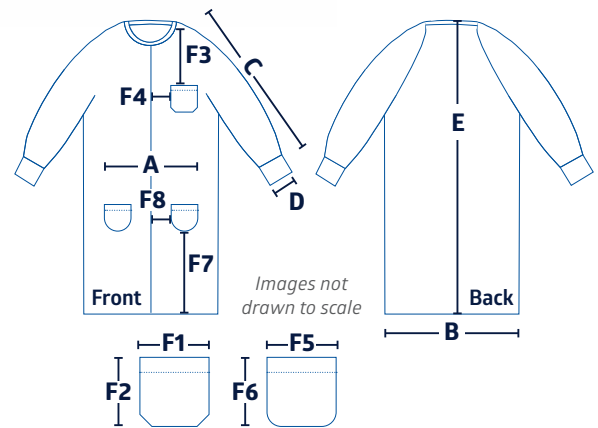
## Lab coat measurements

### without pockets

White: 6623BQWNP\*

Navy: 6623NPBNW\*

Size:	S	M	L	XL	XXL	XXXL
Qty:	1 ea	1 ea	1 ea	1 ea	1 ea	1 ea
<b>A</b> Chest	45.75"	48.75"	52.75"	56.75"	60.75"	64.75"
<b>B</b> Sweep	49.75"	52.75"	56.75"	60.75"	64.75"	68.75"
<b>C</b> Sleeve Length	24.125"	24.5"	24.875"	25.25"	25.625"	26"
<b>D</b> Sleeve Opening	13.25"	13.25"	13.25"	13.25"	13.25"	13.25"
<b>E</b> CBL	42.5"	43"	43.5"	44"	44.5"	45"



### Left breast pocket and two lower patch pockets

White: 6623BQW\*

Navy: 6623BNW\*

Size:	XS	S	M	L	XL	XXL	XXXL	4L	5L
Qty:	1 ea	1 ea	1 ea	1 ea	1 ea	1 ea	1 ea	1 ea	1 ea
<b>A</b> Chest	43.5"	45.75"	48.75"	52.75"	56.75"	60.75"	64.75"	68.75"	72.75"
<b>B</b> Sweep	47.75"	49.75"	52.75"	56.75"	60.75"	64.75"	68.75"	72.75"	76.75"
<b>C</b> Sleeve Length	23.75"	24.125"	24.5"	24.875"	25.25"	25.625"	26"	26.375"	26.75"
<b>D</b> Sleeve Opening	13.25"	13.25"	13.25"	13.25"	13.25"	13.25"	13.25"	13.25"	13.25"
<b>E</b> CBL	42.25"	42.5"	43"	43.5"	44"	44.5"	45"	45.5"	46"
<b>F1</b> Pocket with Breast Pocket	5.25"	5.25"	5.25"	5.25"	5.25"	5.25"	5.25"	5.25"	5.25"
<b>F2</b> Length of Patch Pocket-Breast Pocket	5.75"	5.75"	5.75"	5.75"	5.75"	5.75"	5.75"	5.75"	5.75"
<b>F3</b> Breast Pocket Placement from Shoulder	9.25"	9.5"	9.75"	10"	10.25"	10.5"	10.75"	11"	11.25"
<b>F4</b> Breast Pocket Placement from Front Edge	3.25"	3 3/8"	3.5"	3.75"	4"	4.25"	4.5"	4.75"	5"
<b>F5</b> Pocket Width-Lower Pocket	6.5"	6.5"	6.5"	6.5"	6.5"	6.5"	6.5"	6.5"	6.5"
<b>F6</b> Length of Patch Pocket-Lower Pocket	7"	7"	7"	7"	7"	7"	7"	7"	7"
<b>F7</b> Lower Pocket Placement from Hem	21.5"	21.75"	22"	22.25"	22.5"	22.75"	23"	23.25"	23.5"
<b>F8</b> Lower Pocket Placement from Front Edge	3"	3.25"	3.625"	4.125"	4.625"	5.125"	5.625"	6.125"	6.625"
<b>G</b> Back Vent Length	10"	10"	10"	10"	10"	10"	10"	10"	10"

\*Add size code to end of item number when ordering.

# Men's ResiStat Protective Lab Coat

- 99% polyester/1% carbon fiber fluid-resistant material
- 100% polyester cuffs
- Two lower pockets and one chest pocket
- Overlapping front closure with five snaps
- Classic straight collar
- Openings to access pants pockets

99% polyester/  
1% carbon fabric  
on front and back



Static-resistant



MDT046811M



Snaps at collar



Opening to access pants pockets



White

Light Blue

Also  
available in a  
women's style:  
MDT046815\*  
Sizes XS-3XL

## Lab coat measurements

### without pockets

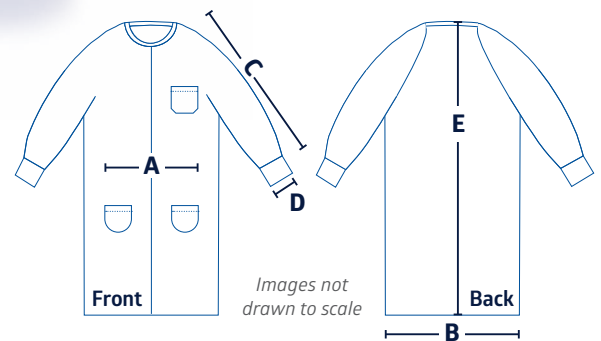
White: **MDT046805NP\***

### With pockets

White: **MDT046805\***

Light Blue: **MDT046811\***

	XS	S	M	L	XL	XXL	XXXL
<b>Size:</b>	XS	S	M	L	XL	XXL	XXXL
<b>Qty:</b>	1 ea	1 ea	1 ea	1 ea	1 ea	1 ea	1 ea
<b>A</b> Chest	44"	48"	51.75"	55.75"	59.75"	63.75"	68"
<b>B</b> Sweep	45"	48.875"	53"	57"	60.875"	65"	68.875"
<b>C</b> Sleeve Length	23"	23.875"	24.625"	25.54"	26.125"	27"	27.5"
<b>D</b> Sleeve Opening	7.125"	7.125"	7.125"	7.125"	7.125"	7.125"	7.125"
<b>E</b> CBL	42"	42.25"	42.25"	42.5"	42.5"	42.5"	42.25"



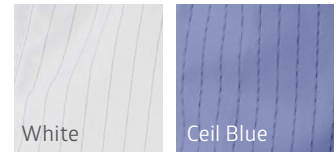
\*Add size code to end of item number when ordering.

# Unisex ResiStat Barrier Lab Coat

- Fluid-repellant finish
- 99% polyester/1% carbon front,
- 55% cotton/45% polyester back
- Two lower patch pockets
- Zip closure is concealed
- Collar can be worn open or snapped closed

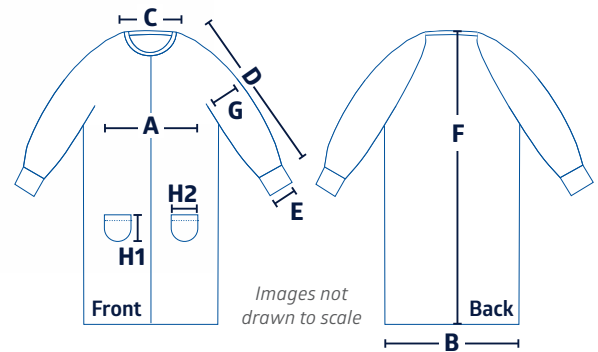


Snaps at collar



White

Ceil Blue



## Lab coat measurements

White: **6620BLH\***

Ceil Blue: **6621BLC\***

	Size:	XS	S	M	L	XL	XXL	XXXL	4L
	Qty:	1 ea	1 ea	1 ea	1 ea	1 ea	1 ea	1 ea	1 ea
<b>A</b>	Chest	21.625"	22.625"	24.625"	26.625"	28.625"	30.625"	32.625"	34.625"
<b>B</b>	Sweep	23.75"	24.75"	26.25"	28.25"	30.25"	32.25"	34.25"	36.25"
<b>C</b>	Collar	6.625"	6.25"	6.5"	6.75"	7"	7.375"	7.625"	8"
<b>D</b>	Sleeve Length	23.75"	24.625"	24.5"	24.875"	25.25"	25.625"	26"	26.375"
<b>E</b>	Sleeve Opening	14.875"	14.875"	14.875"	14.875"	14.875"	14.875"	14.875"	14.875"
<b>F</b>	CBL	42.25"	42.5"	43"	43.5"	44"	44.5"	45"	45.5"
<b>G</b>	Bicep	8.875"	9"	9.375"	9.875"	10.375"	10.875"	11.25"	11.75"
<b>H1</b>	Pocket Length	7.375"	7.375"	7.375"	7.375"	7.375"	7.375"	7.375"	7.375"
<b>H2</b>	Pocket Width	6.875"	6.875"	6.875"	6.875"	6.875"	6.875"	6.875"	6.875"

\*Add size code to end of item number when ordering.

# Laundering recommendations for barrier lab coats

**Formula conditions:** Washer/washer extractor, open pocket with controls for obtaining a requested temperature

**Water quality:** Soft water (zero grains hardness); low to moderate alkalinity (0–100 ppm @Na<sub>2</sub>O); no iron in water

**Wash conditions:** Steam for temperature, cold temp.: 60 °F; hot temp: 150–160 °F; loading: 90–100% of capacity

**Water levels:** Low: 0.5 gallon total water/lb.; high: 0.65 gallon total water/lb.

## Normal wash

	Operation	Wash temp °F	Wash time	Water level	Approx. pH	Quantity fl. oz/cwt
1	Flush	150 °F	5 min.	Low		
2	Break	150 °F	9 min.	Low	10.8–11.2	6–8 (Alkali), 4 (Detergent)
3	Rinse	150 °F	10 min.	Low		
4	Rinse	150 °F	7 min.	High		
5	Rinse	110 °F	7 min.	High		
6	Sour	90 °F	5 min.	Low	5.5–6.5	1–2 (Sour)
7	Extract		3 min.			

**Finished fabric condition:** pH 5.5–6.5

## Bleach

**Do not bleach**—may cause damage to barrier properties

## Normal

**Tumble dry:** Max 160 °F

**Do not over dry.** Can lead to melting, hardening, sheen, static, and permanent creasing

## Iron

**Do not flat-work iron**

### All products:

- Wash prior to use
- Fabric softeners not recommended; softeners may inhibit the barrier properties
- A thorough rinse is essential to remove all surfactants; residual surfactants may adversely affect the barrier properties

### Chemicals:

- Quantity will vary with machine size and type
- Confirm with chemical supplier for correct quantity



Let us know  
how we  
can help

Our clinical specialists can analyze your protective apparel usage trends and recommend ways to optimize utilization and purchasing to help you achieve significant savings.

**Protect your team today.** For more information and samples, contact your Medline Representative or visit [medline.com](https://www.medline.com).



**We make  
healthcare  
run better™**

**Medline Industries, LP**  
Three Lakes Drive, Northfield, IL 60093  
Medline United States | 1-800-MEDLINE (633-5463)  
[medline.com](https://www.medline.com) | [info@medline.com](mailto:info@medline.com)

**Medline Canada**  
1-800-268-2848 | [medline.ca](https://www.medline.ca) | [canada@medline.com](mailto:canada@medline.com)  
**Medline México**  
01-800-831-0898 | [medlinemexico.com](https://www.medlinemexico.com) | [mexico@medline.com](mailto:mexico@medline.com)

Follow us    