

Endoscopy procedure packs and supplies

Address quality, streamline your process, improve patient care



**Drive
compliance,
enhance
outcomes**

Balance compliance and efficiency

Every day your endoscopy center is under pressure to drive efficiency. Ensure compliance. Handle more patients with fewer staff. Improve patient care and safety.

Now more than ever, you need to find new ways to do more with less. **We can help.**

Organizing your supplies into convenient endoscopy packs saves time and reduces waste, ensuring everything your team needs, from pre-op to decontamination, is procedure-ready.

Streamline
your
process

Choose standard packs or customize according to your needs



Improve compliance

Lessen the chance of skipping critical steps—especially during decontamination



Drive efficiencies

Reduce supply touchpoints and save time



Optimize patient outcomes

Make it easier to focus on cleaning protocols to reduce the risk of infection



Appropriate cleaning can reduce the number of microorganisms and organic debris by 99.99%¹



ENDOSCOPY KIT						
1 QUALITY	Net made with natural rubber latex		Reorder #: DYKE18CMPLY		QR CODE	
			LOT #: 16EA0545			
			Exp. Date: 2017-11-30			
2 ITEMIZED LIST	ITEMS	QTY	CODES	ITEMS	QTY	CODES
	BAG	1.00		TRAY	1.00	
	DOUBLE ENDED BRUSH	1.00				
	ENDOSCOPY TOTE	1.00				
	GAUZE 4X4	10.00				
	LUBE JELLY	1.00	<1>			
	SPONGE	1.00				
CODES AND INFORMATION	<1> - Product is Sterile					
	Product(s) of China, United States					
<small>CAUTION: Single Use. Federal (U.S.A.) law restricts this device to sale by or on the order of a physician. Items attached to the outside of the sterile packaging have not been terminally sterilized by Medline. DIRECTIONS: Follow recommended procedure as well as the component and pharmaceutical manufacturer's directions for use. Avoid excessive heat and shield from direct light. © 2012 Medline Industries, Inc. Medline is a registered trademark of Medline Industries, Inc. Packaged in USA for Medline Industries, Inc., Mundelein, IL 60060 USA 1-800-Medline www.medline.com 8037</small>						

The proof is in the numbers

Building routine items into custom packs reduces the number of supply touchpoints for better efficiency.

*12 routine items x 7 steps/item in your supply process x 2,400 annual procedures = 201,600 times per year supplies are touched

**1 endoscopy pack x 7 steps in your supply process x 2,400 annual procedures = 16,800 times supplies are touched



201,600
Touchpoints

When you gather supplies individually for each procedure*

vs.



16,800
Touchpoints

When all supplies are pre-packed in one kit per procedure**

83%

reduction in supply handling touchpoints when you use packs

Save steps, maximize time

Using packs standardizes your process, reduces product handling and simplifies supply ordering.

Choose standard packs or go custom. The choice is yours. You can modify standard packs by adding or taking away items. Or build 100% custom procedure packs with the exact products you specify.



Standard endoscopy procedure packs

	DYKENDOCLEAN	DYKE18CMPLY	DYKENDOCMPLY	DYKENDOBASIC	DYKENDOBPLUS	DYKENDOBASFS	DYKENDOLWCMP	DYKENDOBASVA	DYKENDOUPCMP	DYKENDODBCMP
	Basic endo kits			Basic endo + fluid management kits			VA-compliant kit	Complete lower kit	Complete upper kit	Complete double kit
Gauze		10	10	10	10	10	10	10	10	20
Lube jelly 2 oz			1	1	1	1	1	1	1	1
Lube jelly 1.4 oz		1								
Prep tray	1	1	1	1	1		1		1	2
Syringe 60 mL L/S						1	1	1	1	1
Suction tubing 3/16" x 6'				1	1	1	1	1		
Suction tubing 3/16" x 12'									2	2
Bite block									1	1
Yankauer									1	1
Thumb loop iso gown, XL							1		1	1
Eclipse™ surgical gown, XL							1		1	1
Face mask w/ shield							2		2	2
CO ₂ nasal cannula									1	1
Electrodes 3/pk							1		1	1
Tubular enzymatic sponge	1	1	1	1	1		1		1	2
Endoscope tip guard					1					
Bedside kit, 500 mL add water						1		1		
Double-ended brush	1	1	1	1	1	1	1	1	1	2
ScoProtect™ scope tote	1		1	1	1	1	1	1	1	2
Drawstring tote		1								
Biohazard sticker	1	1	1	1	1	1	1		1	1

Find the items that work best for you



Patient, staff and room prep

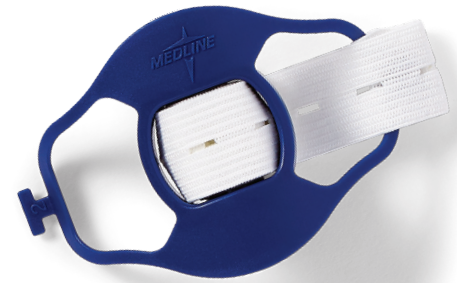
Simplify and streamline inventory for all the day-to-day necessities for endoscopic procedures.

Patient prep

Bite blocks

- Provides consistent access during procedures
- Used as dental protection for the patient
- Disposable to prevent cross-contamination

Item No.	Strap material	Size	Pkg.
DYK1000BBEL	Elastic	60 Fr	100/cs
DYK1000BBR	Rubber	60 Fr	100/cs
DYK1000BBPD	Pediatric, elastic	45 Fr	100/cs



DYK1000BBEL

Electrodes

Item No.	Description	Pkg.
MDS611503A	Foam electrodes with solid gel, 3/pack	600/cs
MDS611505A	Foam electrodes with solid gel, 5/pack	1000/cs



MDS611503A

Yankauers

Item No.	Description	Pkg.
DYND52130	Yankauer with bulb tip, no vent	50/cs
DYND50132	Yankauer with bulb tip, vented	50/cs



DYND50132

Nasal cannulas

Item No.	Description	Pkg.
HCS4568S	SuperSoft CO2 sampling cannula, male, adult	25/cs
HCS4571S	SuperSoft CO2 sampling cannula, standard, male, adult	25/cs



HCS4568S

Staff prep



NON27410EL

Face mask

- This mask meets the Level 3 ASTM F2100-19 Standard
- Attached eye shield offers added safety and can be worn over glasses
- Comfortable antifog foam helps prevent eyeglasses from fogging
- Features ear loops for easy donning and removal

Item No.	Description	Pkg.
NON27410EL	Procedural face mask with eye shield and ear loops	100/cs



NONTH200

Gowns

Item No.	Description	Type	Protection level	Size	Pkg.
DNSC502853	Endo gown	Surgical	AAMI 1	Large	100/cs
DYNJP2001S	Sterile nonreinforced Sirius surgical gowns with set-in sleeves	Surgical	AAMI 3	Large	20/cs
NONTH200	Standard polyethylene isolation gowns with thumb loop	Isolation	Fluid resistant	Large	75/cs

Patient, staff and room prep, continued

Room prep



Disposable suction canisters

- Complete disposable rigid suction canister stands on its own and provides accurate fluid readings
- Locking snap-on lid has standard elbow suction port and porous, hydrophobic shutoff valve to prevent backflow
- Available in various sizes to meet clinical needs

Item No.	Description	Pkg.
DYNDSC1000	Suction canister liner, soft, 1000 cc	50/cs
DYNDSC1500	Suction canister liner, soft, 1500 cc	50/cs
OR510	Suction canister, semi-rigid, 1000 cc	100/cs
OR515	Suction canister, semi-rigid, 1500 cc	100/cs
DYNDSC1500	Suction canister, rigid, 1500 cc with turret lid	45/cs

Suction tubing

Item No.	Description	Pkg.
DYND50221NS	Nonsterile universal suction tubing with scallop connectors, 3/16" x 10'	100/cs
DYND50251NS	Nonsterile universal suction tubing with scallop connectors, 1/4" x 10'	60/cs
DYND50252NS	Nonsterile universal suction tubing with scallop connectors, 1/4" x 12'	50/cs
OR510TNS	Nonsterile universal suction tubing with straight connectors, 3/16" x 10'	80/cs
OR610NS	Nonsterile universal suction tubing with straight connectors, 1/4" x 10'	50/cs
OR612NS	Nonsterile universal suction tubing with straight connectors, 1/4" x 12'	40/cs



Procedural items

Some of the most commonly used products are required on an almost daily basis. Make sure to keep these supplies organized and close at hand.

4-chamber polyp trap

- Allow clinicians to retrieve multiple polyps during a procedure and reduces exposure to biomaterial
- Rotatable lid eliminates need to switch tray during procedure
- Removable and numbered traps for improved identification
- Individually packaged to reduce cross-contamination
- Nonsterile

Polyps are a sign of colorectal cancer and can form into different shapes and sizes.

Item No.	Description	Pkg.
DYKENDOPT4	4-Chamber polyp trap	50/cs



DYKENDOPT4

Disposable endoscopy valves and buttons

- Disposable endoscopy valves reduce the risk of cross contamination from improper reprocessing
- Reduce scope turnover time
- Compatible with Olympus scopes

Item No.	Description	Scope compatibility	Pkg.
DYNDX503652	Air/water, suction, biopsy	Olympus	50/cs
DYNDX504166	Air/water, suction, biopsy, water jet connector	Olympus	50/cs
DYNDX504537	Cleaning adapter/ key card	Olympus	50/cs
DYNDVALVE0	Biopsy valve	Olympus and Fuji	100/cs



DYNDX504166



DYNDX504537

Lube jelly

Item No.	Description	Size	Pkg.
DYKENDOLUBE14	Endoscopy sterile lube jelly	1.4 oz	100/cs



DYKENDOLUBE14

Bedside cleaning

Removing visible bioburden at the bedside immediately after each procedure is the critical first step in reprocessing a flexible endoscope.



DYK1000TSE



DYK500TS



DYK250TS

Endoscopy bedside cleaning kits

- Our detergent uses a proprietary blend of both surfactants and enzymes to ensure the removal of bioburden after every procedure
- Enzymes break down protein-based bioburden while surfactants lift the bioburden off the surface and keep the surface wet to ensure bioburden will not dry
- Our proprietary enzyme blend is manufactured using a microbial fermentation of only plant-based ingredients. The enzymes used include protease, lipase and carbohydrase.

Item No.	Detergent	Liquid	Sponge shape	Pkg.
DYK1000TSDRY	No	none	Tubular	100/cs
DYK1000TSE	Yes	none	Tubular	100/cs
DYK500FSAW	Yes	none	Flat	100/cs
DYK1000WTS	Yes	30 mL	Tubular	100/cs
DYK100FS	Yes	100 mL	Flat	50/cs
DYK215FS	Yes	215 mL	Flat	50/cs
DYK250TS	Yes	250 mL	Tubular	35/cs
DYK500FS	Yes	500 mL	Flat	25/cs
DYK500TS	Yes	500 mL	Tubular	25/cs



DYK1000TSDRY

pH balanced, biodegradable plant-based enzymes:

- Are safe to use on all the common materials that medical-grade instruments are made from
- Do not require fragrances to mask their smell
- Are safe for the environment when disposed of

Scope transportation

Proper care of scopes during the cleaning process is vital to infection prevention and protecting your equipment investment.

With thoughtfully designed totes, trays, carts and tip guards, Medline promotes higher levels of safety, security and efficiency to these important practices.

ScoProtect® Totes

Compliance and containment made easy and convenient. These totes are designed to address infection control, cross-contamination and staff safety by:

- Offering a clean, impervious field to place scopes and accessories during a procedure
- Absorbs spills in a soft, absorbent pad to eliminate the need to clean reusable transport bins
- Covering, cushioning and containing used scopes for sanitary transportation to the decontamination room
- Available in two sizes, with or without drawstring

Item No.	Description	Closing type	Size	Pkg.
DYK1000ET	Blue tote bag	Hook and loop	52" x 42"	25/cs
DYK1000ETSM	Blue tote bag	Hook and loop	39" x 39"	25/cs
DYK1000ETDS	Blue tote bag	Drawstring	39" x 39"	25/cs
DYKENDOTDS	Blue tote bag	Drawstring	39" x 39"	50/cs
DYK1000ETDB	Red tote bag with biohazard label	Drawstring	39" x 39"	25/cs

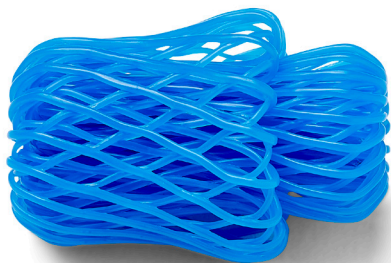


DYK1000ET

DYK1000ETDS



DYK1000ETDSSB



DYK1000TG

Endoscope tip guard

- Provides protection to the distal end of the endoscope during storage, transport and pre-cleaning
- Made from a semirigid expandable mesh to protect lens from front and side impact
- Material is not abrasive and reduces risk of lens scratching

Item No.	Description	Pkg.
DYK1000TG	For endoscopes with 7 mm to 15 mm dia.	100/cs
DYK1000TGSM	For endoscopes with 2 mm to 10 mm dia.	100/cs

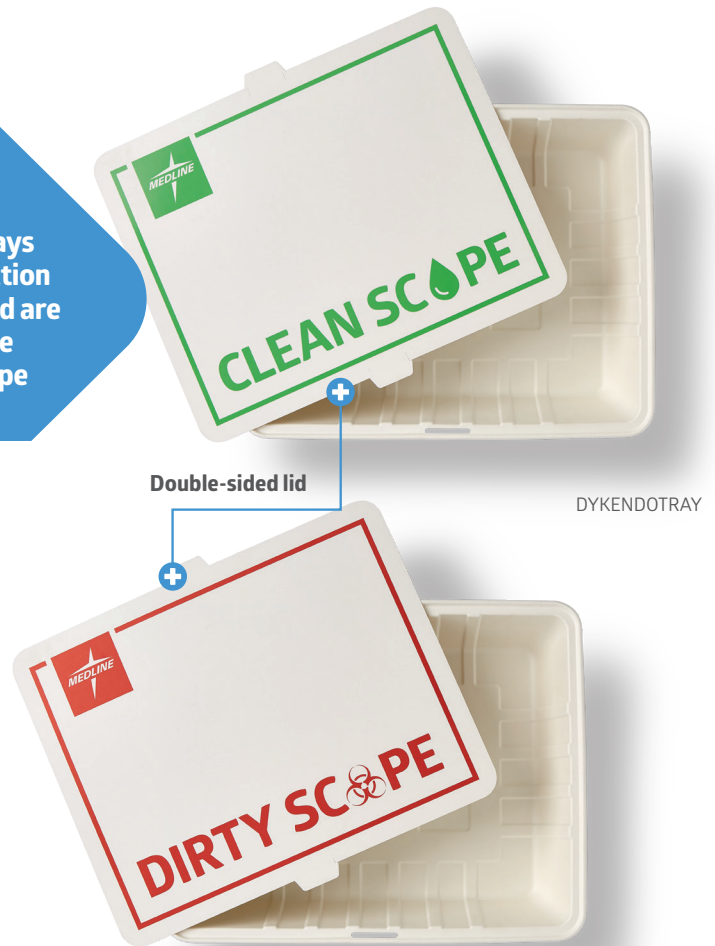
Scope transportation, continued

Disposable trays promote infection prevention and are a more durable option for scope protection

Endoscope transport trays

- Transports clean scope to the procedure room and soiled scope back to decontamination
- Reversible lid to clearly differentiate clean and soiled scopes
- Adheres to the SGNA reprocessing guidelines that a scope must be in a closed container to prevent exposure to infectious organisms
- Made from recycled sugar pulp material
- Single use, disposable

Item No.	Description	Pkg.
DYKENDOTRAY	Endoscope transport tray; 21.6" x 18.1" x 11/5"	30/cs



Endoscope transport tray carts

- Cart DYKDISPENSE holds and dispenses endoscope transport trays
- Use Collection Unit DYKCOLLECT to dispose of soiled or used trays
- Storage Rack DYKSTORAGE can hold up to six transport trays on separate shelves to safely transport the trays around your facility

Item No.	Description	Pkg.
DYKCOLLECT	Transport tray collection unit, 25.75" x 19.63" x 34.5"	1 ea
DYKDISPENSE	Transport tray dispensing cart, 22" x 18.07" x 31.43"	1 ea
DYKSTORAGE	Transport tray storage rack, 21" x 18.3" x 40"	1 ea

Manual cleaning

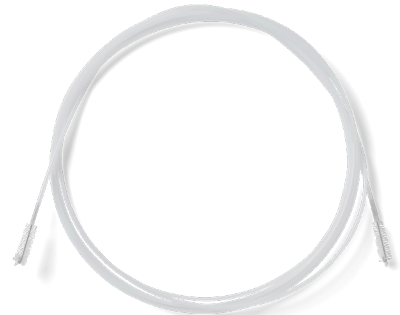
High-quality brushes are efficient and effective for cleaning of all scope channels and scope handle, with options to meet all user preferences.



DYK1002DCBZ



DYK1001DBVZ



DYK1001DBSEZ

Endoscopy cleaning brushes

- Single-use, disposable cleaning brushes
- Help remove matter from the scopes channels and valves
- Mostly dual-ended models with a large and a small tip

Item No.	Handle	Scope cleaning	Brush dia.	Working channel dia.	Pkg.
DYK1002DCB	Yes	Channel and valve	5 mm and 10 mm	2.0 mm–4.0 mm	300/cs
DYK1002DCBZ	Yes	Channel and valve	5 mm and 10 mm	2.0 mm–4.0 mm	50/cs
DYK1002DBDE	No	Channel and valve	5 mm and 10 mm	2.0 mm–4.0 mm	500/cs
DYK1002DBDEZ	No	Channel and valve	5 mm and 10 mm	2.0 mm–4.0 mm	50/cs
DYK1002DBSE	No	Channel only	5 mm and 5 mm	2.0 mm–4.0 mm	500/cs
DYK1002DBSEZ	No	Channel only	5 mm and 5 mm	2.0 mm–4.0 mm	50/cs
DYK1002SBC	No	Channel only	5 mm	2.0 mm–4.0 mm	500/cs
DYK1002SBCZ	No	Channel only	5 mm	2.0 mm–4.0 mm	50/cs
DYK1002DBV	Yes	Valve only	5 mm and 10 mm	N/A	1000/cs
DYK1002DBVZ	Yes	Valve only	5 mm and 10 mm	N/A	100/cs

Single-use endoscope ValveSafe basket

- Use during the cleaning, disinfection and storage of an endoscope to allow valves to remain as a unique set with the parent endoscope throughout the cleaning process
- Unique design ensures valve cage cannot be reused
- Not made with natural rubber latex



DN5C1000VS

Item No.	Description	Pkg.
DN5C1000VS	Endoscope ValveSafe valve cage	100/cs

High-level disinfection and storage

Use of approved disinfectants, combined with proper storage and clear labeling, are important factors in maintaining the highest levels of effective disinfection.

Medline OPA/28 high level disinfectant

- Fast, high-level disinfection time (10 minutes), provides extra cycles per hour compared with other OPAs and glutars to significantly increase operational efficiencies
- Lasts twice as long as 14-day OPA and glutaraldehyde
- 28-day reuse life for both manual and AER applications



MDS880PA28

Item No.	Description	Pkg.
MDS880PA28	OPA 28-day disinfectant, 1 gal.	4/cs



MDR3824RG1SA

Storage cabinets

- Choose from single right-hinged or double tempered glass doors
- Cabinets come vented on top and bottom with a padded rear wall and 3-inch recessed toe kick
- Made from Airecore
- Includes 5-year warranty
- HEPA fan sold separately

Item No.	Description	Pkg.
MDR3824RG1SA	Right hinged glass door, 5 scope storage cabinet	1 ea
MDR311824RG2S	Right hinged glass door, 10 scope storage cabinet,	1 ea

Clean scope tag

- Help you meet compliance standards
- Allows healthcare professionals to record date of processing, level of disinfection and other details

Item No.	Description	Pkg.
DYK1000CLNTAG	Clean scope tag	50/cs



DYK1000CLNTAG

Endoscopy custom kit checklist

Please submit completed checklist to DynacorQuotes@medline.com

Rep number: _____ Account number: _____ Usage (ea/mo): _____

Transport tote: Qty _____

- Drawstring without biohazard
- Drawstring with biohazard
- Hook and loop, large
- Hook and loop, small

Gauze: Qty _____

- Non-woven
- Woven
- Other: _____

Lube jelly: Qty _____

- 1.4 oz foil packet
- 2 oz flip top tube
- Other: _____

Prep tray/bowl: Qty _____

- 500 mL square prep tray
- 16 oz bowl
- 32 oz bowl
- 700 cc emesis basin
- Other: _____

Bedside cleaning: Qty _____

- Tubular sponge, no detergent
- Tubular enzymatic sponge
- Tubular enzymatic sponge, 30 mL
- Bedside kit, 100 mL, flat sponge
- Bedside kit, 215 mL, flat sponge
- Bedside kit, 250 mL, tubular sponge
- Bedside kit, 500 mL, flat sponge
- Bedside kit, 500 mL, tubular sponge
- Bedside kit, add water up to 500 mL, flat sponge

Cleaning brush: Qty _____

- Double-ended, different ends, handle
- Double-ended, different ends, no handle
- Double-ended, same ends
- Single-ended
- Double-ended valve brush

Syringe: Qty _____

- 60 mL L/S
- 60 mL L/L
- Other: _____

Underpad/drypad: Qty _____

- 17" x 24"
- 30" x 36"
- Other: _____

Biopsy valve: Qty _____

- Olympus/Fuji compatible

Bite block: Qty _____

- Adult, elastic strap
- Adult, rubber elastic strap
- Pediatric, elastic strap

Yankauer: Qty _____

- Bulp tip without vent
- Bulp tip with vent
- Other: _____

Suction tubing: Qty _____

- 3/16" x 6'
- 3/16" x 12'
- 1/4" x 6'
- 1/4" x 10'
- Other: _____

Suction canister: Qty _____

- Rigid canister
 - Size (cc) _____
- Semi-rigid canister
 - Size (cc) _____
- Canister liner
 - Size (cc) _____

Solidifier: Qty _____

- 1500 cc
- 1000 cc
- Other: _____

Specimen container: Qty _____

- 40 cc specimen trap
- 4 oz specimen container with lid
- Other: _____

Gowns: Qty _____

- Isolation gown with thumb loop, poly, Level 1, XL
- Isolation gown with thumb loop, over head, Level 2, XL
- Surgical gown, Level 2, XL
- Surgical gown, Level 3, XL
- Other: _____

Face mask: Qty _____

- Mask with eye shield, fluid resistant
- Other: _____

Nasal cannula: Qty _____

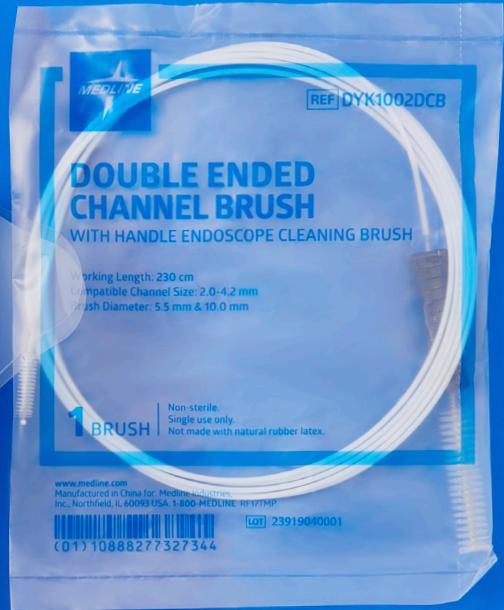
- O2, 7'
- O2, 14"
- O2/CO2, 7'
- Other: _____

Electrodes: Qty _____

- 3/pk
- 5/pk
- Other: _____

Valves: Qty _____

- Olympus: Air/water, suction, biopsy
- Olympus: Air/water, suction, biopsy, water jet
- Olympus: Cleaning adapter "key card"



**We make
healthcare
run better™**

Medline Industries, LP
Three Lakes Drive, Northfield, IL 60093
Medline United States | 1-800-MEDLINE (633-5463)
medline.com | info@medline.com

Medline Canada
1-800-268-2848 | medline.ca | canada@medline.com
Medline México
01-800-831-0898 | medlinemexico.com | mexico@medline.com

Follow us    

Reference: 1. Kovaleva, Julia, Peters T.M., van der Mei C, Henny, Degenera E, John. Transmission of Infection by Flexible Gastrointestinal Endoscopy and Bronchoscopy. *Clinical Microbiology Review*. 2013 Apr; 26(2): 231-254. Available at <https://www.ncbi.nlm.nih.gov/pmc/articles/PMC3623380>. Accessed July 20, 2021.

Some products may not be available for sale in Mexico or Canada.

© 2021 Medline Industries, LP. All rights reserved. Medline is a registered trademark of Medline Industries, LP. MKT19W2050693 / LIT971 / 2.5M / SG / 23