

# Gemini® Bonded Wrap

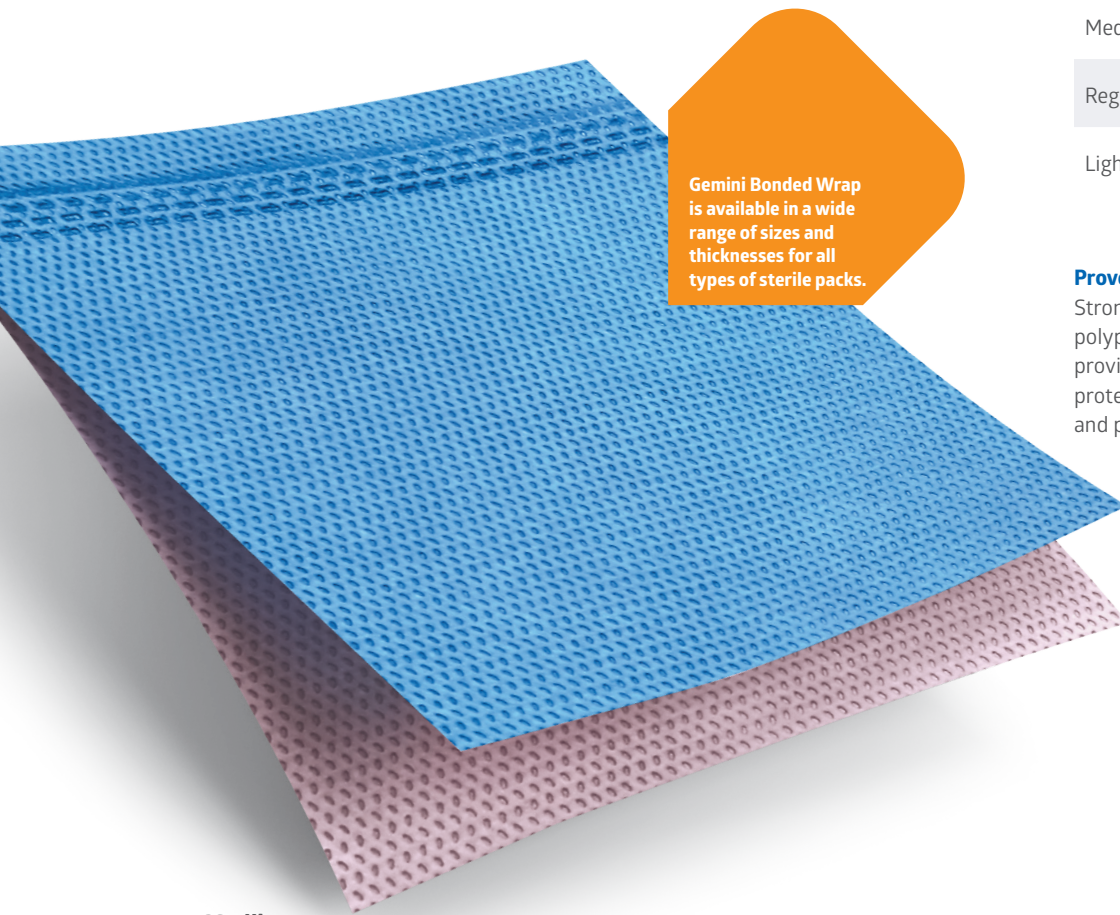
Dual layers for exceptional sterilization protection



**Proven  
barrier  
protection**

# Two layers are better than one

**Gemini® Bonded Wrap** uses two sheets, fused together, to provide exceptional strength and improved efficiency—leading to greater confidence in your sterilization process.



Gemini Bonded Wrap is available in a wide range of sizes and thicknesses for all types of sterile packs.

## Choose the strength you need

Strength	Max Weight	Recommended Use
Titan Weight	up to 25 lbs.	Very large and heavy instrument sets that demand maximum strength and durability
Super Heavyweight	up to 25 lbs.	Large and heavy instrument sets that require extra strength
Heavyweight	up to 17 lbs.	Heavy instrument sets and multiple basin sets
Medium Weight	up to 13 lbs.	Large packs, large medical devices, basin sets and instrument trays
Regular Weight	up to 9 lbs.	Packs, light basin sets, instruments, medical devices, linen packs and trays
Lightweight	up to 6 lbs.	Light trays, small linen packs, small medical devices and small instruments

### Proven Barrier Protection

Strong dual-layer, polypropylene construction provides high-level barrier protection against fluid and particulates.

### Easy to Use

- Drapable with less memory when opening
- Soft, smooth finish is easy to handle and fold

### Versatile

Medline's Gemini Bonded Wrap is indicated for use in all major sterilization cycles, including:

- Pre-Vacuum Steam\*
- Gravity Steam
- Ethylene Oxide (ETO)
- STERRAD®
- Steris V-Pro®
- Sterizone VP4®

## Lightweight

Maximum 6 lbs.

---

## Regular Weight

Maximum 9 lbs.

---

## Medium Weight

Maximum 13 lbs.

---

## Heavyweight

Maximum 17 lbs.

---

## Super Heavyweight

Maximum 25 lbs.

---

## Titan Weight

Maximum 25 lbs.

**DOES NOT PRINT-  
SAMPLE SWATCHES**

5.25" x 6.75" area

## Single-Tone Bonded Gemini Sterilization Wraps

- Two-ply bonded, polypropylene Gemini wraps offer high-level barrier protection against fluids and particulates
- Made with SMS fabric
- Gemini wraps offer high-level protection against fluids and particles
- Strong and resistant to tears, the fabric is still soft, so it's easy to drape
- Naturally low linting, it helps maintain the integrity of the sterile packs and the surface is friendly to sterilization tape

	Lightweight	Regular Weight	Medium Weight	Heavyweight	Super Heavyweight
<b>Recommended Max. Weight</b>	6 lb	9 lb	13 lb	17 lb	25 lb
12" x 12"	GEM1112S (500/cs)	GEM2112S (500/cs)	n/a	n/a	n/a
15" x 15"	GEM1115S (500/cs)	GEM2115S (500/cs)	n/a	GEM4115S (300/cs)	n/a
18" x 18"	GEM1118S (500/cs)	GEM2118S (500/cs)	GEM3118S (300/cs)	GEM4118S (300/cs)	n/a
20" x 20"	GEM1120S (500/cs)	GEM2120S (250/cs)	GEM3120S (125/cs)	n/a	n/a
24" x 24"	GEM1124S (250/cs)	GEM2124S (250/cs)	GEM3124S (100/cs)	GEM4124S (100/cs)	n/a
30" x 30"	GEM1130S (150/cs)	GEM2130S (150/cs)	GEM3130S (75/cs)	GEM4130S (100/cs)	n/a
36" x 36"	GEM1136S (150/cs)	GEM2136S (150/cs)	GEM3136S (75/cs)	GEM4136S (75/cs)	GEM5136S (72/cs)
40" x 40"	GEM1140S (100/cs)	GEM2140S (100/cs)	GEM3140S (75/cs)	n/a	GEM5140S (48/cs)
45" x 45"	GEM1145S (100/cs)	n/a	GEM3145S (50/cs)	GEM4145S (50/cs)	GEM5145S (48/cs)
48" x 48"	GEM1148S (100/cs)	GEM2148S (50/cs)	GEM3148S (30/cs)	GEM4148S (30/cs)	GEM5148S (24/cs)
54" x 54"	GEM1154S (50/cs)	GEM2154S (50/cs)	GEM3154S (30/cs)	GEM4154S (30/cs)	GEM5154S (24/cs)
54" x 72"	n/a	n/a	GEM3172S (30/cs)	GEM4172S (30/cs)	GEM5172S (24/cs)

## Two-Tone Bonded Gemini Sterilization Wraps

- Two-ply bonded, polypropylene Gemini wraps offer high-level barrier protection against fluids and particulates
- Strong and resistant to tears, the fabric is still soft so it's easy to drape
- Naturally low linting, each wrap helps maintain the integrity of the sterile packs, and the surface is friendly to sterilization tape
- Dual color bonded blue/pink helps differentiate specific instrument sets

	Lightweight	Regular Weight	Medium Weight	Heavyweight	Super Heavyweight
<b>Recommended Max. Weight</b>	6 lb	9 lb	13 lb	17 lb	25 lb
12" x 12"	GEM1112T (500/cs)	n/a	n/a	n/a	n/a
15" x 15"	GEM1115T (500/cs)	n/a	n/a	n/a	n/a
18" x 18"	n/a	n/a	n/a	GEM4118T (300/cs)	n/a
20" x 20"	GEM1120T (500/cs)	n/a	n/a	n/a	n/a
24" x 24"	GEM1124T (250/cs)	GEM2124T (250/cs)	GEM3124T (100/cs)	GEM4124T (100/cs)	n/a
30" x 30"	GEM1130T (150/cs)	GEM2130T (150/cs)	n/a	GEM4130T (100/cs)	n/a
36" x 36"	GEM1136T (150/cs)	GEM2136T (150/cs)	GEM3136T (100/cs)	GEM4136T (100/cs)	GEM5136T (72/cs)
40" x 40"	GEM1140T (100/cs)	GEM2140T (100/cs)	GEM3140T (100/cs)	n/a	GEM5140T (48/cs)
45" x 45"	GEM1145T (100/cs)	n/a	GEM3145T (50/cs)	GEM4145T (50/cs)	GEM5145T (48/cs)
48" x 48"	GEM1148T (100/cs)	GEM2148T (50/cs)	GEM3148T (30/cs)	GEM4148T (30/cs)	GEM5148T (24/cs)
54" x 54"	GEM1154T (50/cs)	GEM2154T (50/cs)	GEM3154T (30/cs)	GEM4154T (30/cs)	GEM5154T (24/cs)
54" x 72"	n/a	n/a	n/a	GEM4172T (30/cs)	GEM5172T (24/cs)
60" x 60"	n/a	n/a	n/a	n/a	GEM5160T (24/cs)

# Titan Strength

**30-40% thicker than the heaviest wrap currently on the market.** Gemini® Titan™ Sterilization Wrap provides even greater strength and thickness for the ultimate infection-prevention protection. It offers edge-to-edge strength for optimal rip, tear and abrasion resistance for your heaviest sets.



**Large, bulky sets**  
like orthopedic trays



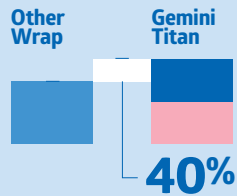
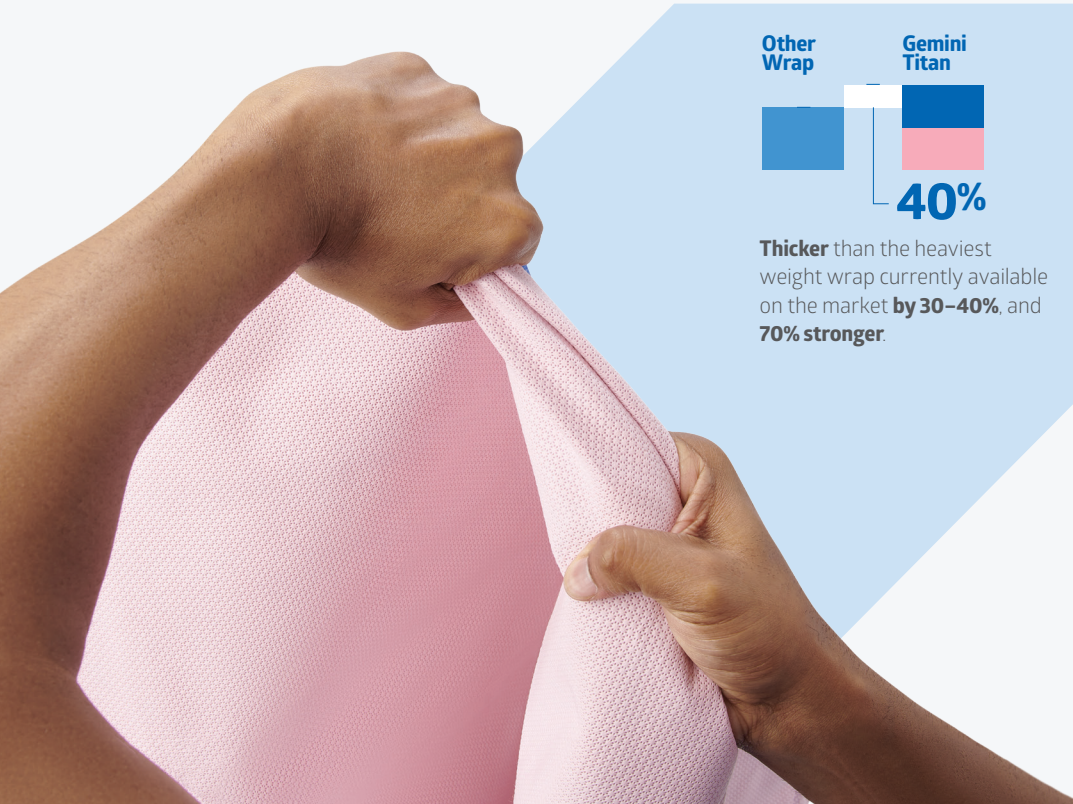
**Exposed wire**  
rack shelving



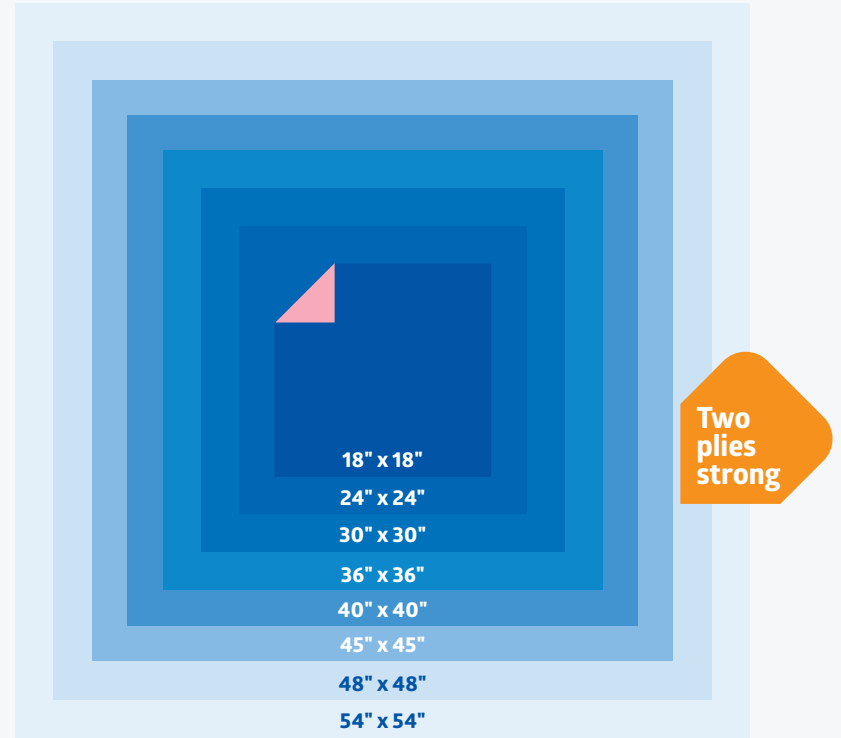
**Stacking** resulting  
from inadequate  
storage space



**Concentrated  
pressure areas** like  
rough or bumpy  
basket edges



**Thicker** than the heaviest weight wrap currently available on the market **by 30-40%**, and **70% stronger**.

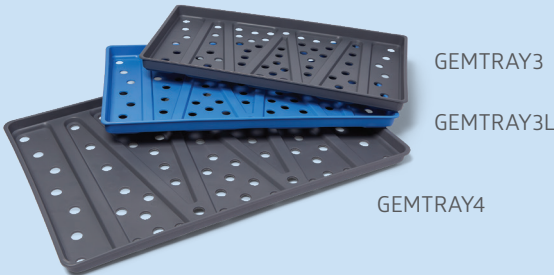


## Two-Tone Titan Bonded Wraps

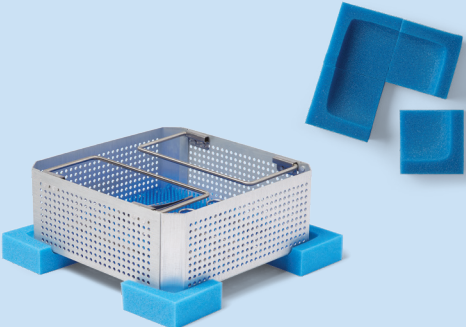
- Bonded wrap designed to withstand tough conditions, including exposed wire rack shelving, bulky tray sets, inadequate storage and concentrated pressure areas
- Edge-to-edge strength for optimal resistance against holes, tears and abrasions

Item No.	Dimensions	Pkg.
GEMTITAN18T	Two-Tone Titan Bonded Wrap, 18" x 18"	200/cs
GEMTITAN24T	Two-Tone Titan Bonded Wrap, 24" x 24"	100/cs
GEMTITAN30T	Two-Tone Titan Bonded Wrap, 30" x 30"	60/cs
GEMTITAN36T	Two-Tone Titan Bonded Wrap, 36" x 36"	48/cs
GEMTITAN40T	Two-Tone Titan Bonded Wrap, 40" x 40"	24/cs
GEMTITAN45T	Two-Tone Titan Bonded Wrap, 45" x 45"	24/cs
GEMTITAN48T	Two-Tone Titan Bonded Wrap, 48" x 48"	24/cs
GEMTITAN54T	Two-Tone Titan Bonded Wrap, 54" x 54"	24/cs

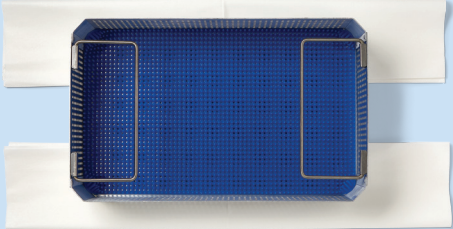
# Additional packaging accessories



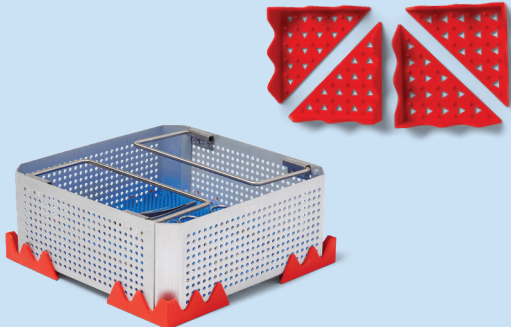
**Rigid Transport Tray**  
GEMTRAY3, GEMTRAY3L, GEMTRAY4



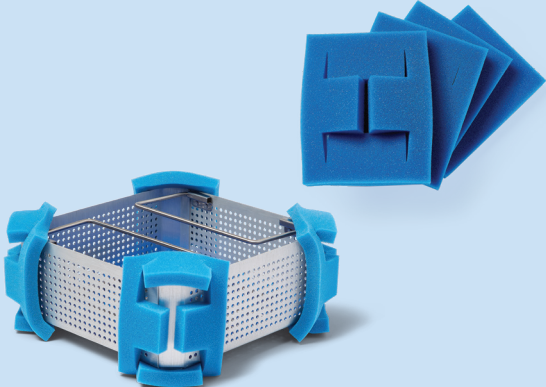
**Tray Corner Protector**  
GEMCORNER



**Paper Tray Liner**  
WGN400



**Reusable Tray Corner Protector**  
REGEMCORNER



**Tray Corner Protector**  
GEMCORNER45



**FoamGuard Low Temperature Liner**  
MDSFML10, MDSFML17, MDSFML21

## World-class implementation service

Let our dedicated sterilization wrap specialists help support your staff to meet your sterilization requirements with greater efficiency.

**Upgrade your Central Sterile capabilities.** Contact your Medline Representative for samples and see the difference Gemini Wrap can make.



**We make  
healthcare  
run better®**

Medline Inc. | 1-800-MEDLINE (633-5463) | [www.medline.com](http://www.medline.com)

©2026 Medline. All rights reserved. MEDLINE and "We make healthcare run better" are registered trademarks of Medline Industries, LP. All product names, regardless of whether or not they appear with a trademark symbol, are the property of their respective companies unless otherwise noted.

MKT19W9091203 / LIT512R / 2.5M / SG / 87