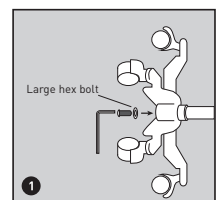


Clock/Mobile Aneroid Sphygmomanometer

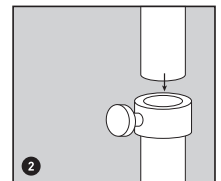
INSTRUCTIONS FOR USE

ASSEMBLY INSTRUCTIONS FOR MFR # 01-752M-11ABKGM
MOBILE ANEROID SPHYGMOMANOMETER

1. With base on its side, connect upright outer pole to base using the long hex bolt. Tighten with the large hex key provided. Tighten hardware as securely as possible. (To prevent loosening, hardware must be tightened securely and periodically checked.) Reposition base upright.



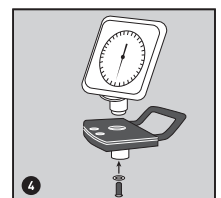
2. Slide stainless steel inner pole inside outer pole with open end up. Make sure shock absorbing spring is inside the outer pole and tighten.



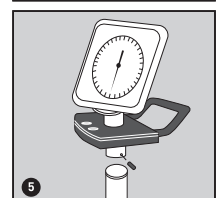
3. Attach metal basket to platform using two 3 mm hex screws. Tighten with small hex key provided.



4. Attach manometer bracket (with attached manometer) to platform using short 6 mm hex screw and washer. Tighten with large hex key.



5. Place assembly consisting of manometer, cuff storage basket and platform on top of stainless steel inner pole, making sure the pole goes completely inside collar. Use tightening device and small hex key as shown.



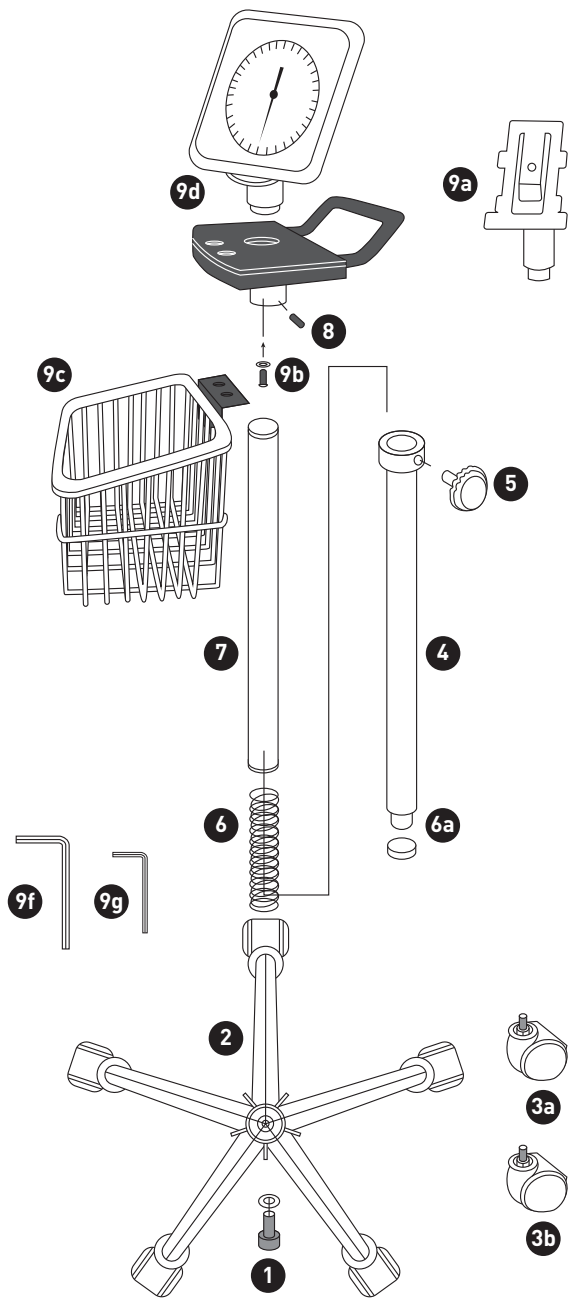
Store between -4°-131°F (-20°-55°C). Store between 15-85% relative humidity.
Not made with natural rubber latex.

Questions? Call 1-800-777-4908

Satisfaction Guaranteed

For complete details, please visit
mms.mckesson.com/mckesson-brands.

MOBILE STAND ASSEMBLY



PARTS LIST

Ref #	DESCRIPTION
1	Long 6 mm Hex Screw and Washer
2	Base
3A	Single Caster [3]
3B	Single Locking Caster [2]
4	Outer Pole
5	Knob
6	Spring
6A	Gasket
7	Inner Pole
8	Tightening Device
9A	Manometer Bracket
9B	Short 6 mm Hex Screw and Washer
9C	Cuff Storage Basket
9D	Platform
9E	3 mm Hex Screw [2]
9F	Large 6 mm Hex Key
9G	Small 3 mm Hex Key

**WALL MOUNTING INSTRUCTIONS FOR MFR # 01-750W-11ABKGM
WALL ANEROID SPHYGMOMANOMETER**

INCLUDED HARDWARE

- Two screws
- Two screw anchors

TOOLS NEEDED

- Medium Phillips head screwdriver
- Hammer
- Drill with 3/16-inch bit

DIRECTIONS

1. Unbox the clock aneroid and basket assembly and determine the desired location and height.
2. Cut out the screw template (below) and position at the midpoint of the selected location. Use a pencil to mark the two screw holes.
3. At each pencil mark, drill a 3/16-inch hole approximately 7/8 inch deep. Use a masonry type bit if drilling through ceramic tile.
4. Using the hammer, gently tap the screw anchors into the holes until they are flush with the wall.
5. Screw included screws directly into anchors, leaving about 1/8-inch overhang.
6. Position the clock assembly over the screws, then guide the screw heads into the keyhole openings on the back.
7. Slide the assembly down to lock into place.

NOTE: If the mounting hardware supplied is not suitable for your installation, select hardware of adequate size and type to secure the instrument firmly to the wall.

WALL MOUNT SCREW TEMPLATE

