



ERASECAUTI[®]

Comprehensive Care Solution



IT'S TIME TO
MAKE THE
CHANGE.

The High Price of CAUTIs

Catheter-associated urinary tract infections (CAUTIs) are one of the most common healthcare-associated infections (HAIs) and account for more than 15% of all HAIs reported by hospitals.¹ They are expensive in both human and financial terms. CAUTIs cause patient discomfort, discharge delays, increased mortality, higher costs and lower hospital reimbursement.^{1,2}

The Human Cost of CAUTIs



1,000,000

Estimated number of CAUTIs that occur annually in hospitals and nursing homes³

The Financial Cost of CAUTIs



\$7,670

The attributable cost of CAUTI for Medicare patients⁵



9,000

Approximate number of deaths associated with CAUTI annually⁴



\$10,197

The attributable cost of CAUTI for Medicare patients in the ICU⁵



2.5 million

Estimated number of catheters placed without an appropriate indication³



\$500 million

Annual cost of CAUTI to healthcare system⁶

Why CAUTI still happens.

Putting evidence into practice isn't easy. That's why evidence-based practices aren't necessarily implemented right away—even when they substantially reduce infection risk.²

Common obstacles to practice change include:

Competing priorities.

Initiatives to prevent CAUTI often have to compete with other priorities that take time and put demands on staff.⁷

“This is how we've always done it.”

Caregiver and cultural biases for longstanding care routines are often resistant to change.⁸

Nursing workload.

Some nurses prefer indwelling urinary catheters (IUCs), saying it's easier to collect a specimen, and the patient can rest more. Others think catheters save time because they don't have to assist patients with toileting.⁹

Patient or family request.

A family member may request an IUC because their loved one can't get up or walk. Incontinent patients will sometimes talk their doctor or nurse into keeping the catheter in.⁹

54%

A recent national survey of infection preventionists and other clinicians revealed a little over half felt their facilities were not adequately complying with recommended CAUTI reduction protocols.¹⁰



ERASECAUTI®

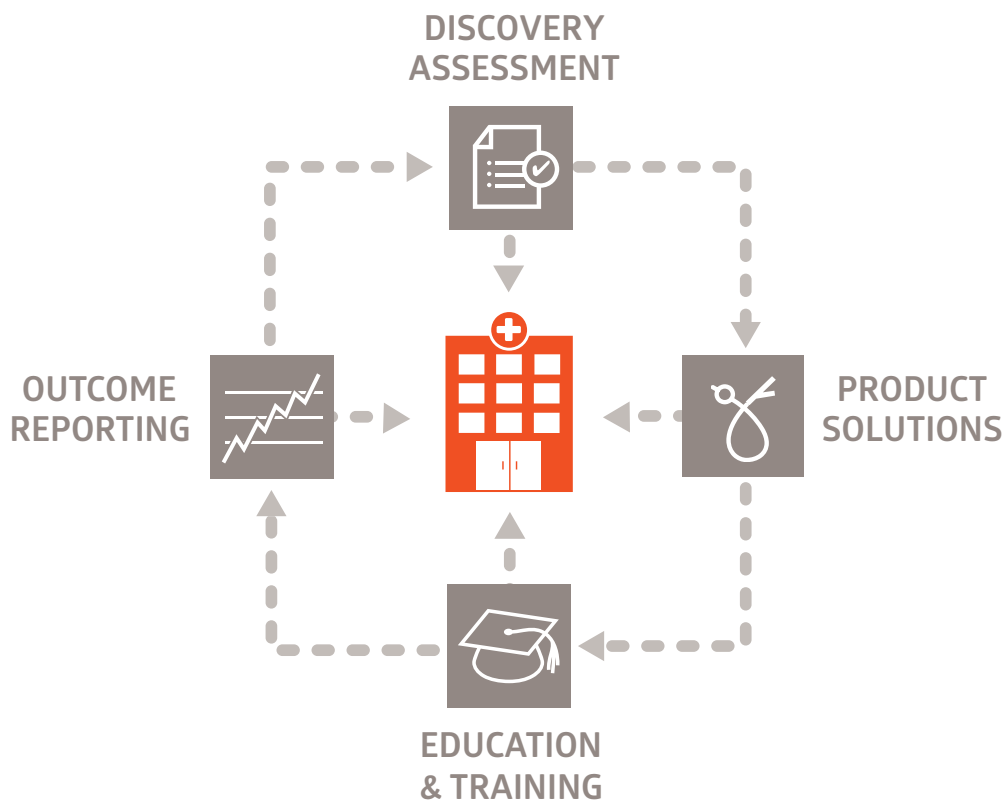
Comprehensive Care Solution

Helping you ERASE CAUTI.

Without a carefully constructed solution for navigating the obstacles to practice change, facilities likely won't achieve their CAUTI prevention goals.

Medline has worked with clinical leaders in hospitals nationwide to develop an effective and easy-to-adopt process that combines clinical thinking with product and educational resources to drive sustainable practice change.

ERASE CAUTI® Comprehensive Care Solution



Partnering with you for better outcomes.

Medline's ERASE CAUTI Comprehensive Care Solution starts with one of the most impactful pillars—data. Our Discovery Assessment collects data from multiple areas, leading to the most impactful path to reduce CAUTI risk.

Discovery Assessment



Store Room Assessment

- » Are the correct tools available for proper catheter placement?
- » Is product selection and display optimized to drive use of IUC alternatives?



Clinical Knowledge

- » Recommendations have changed, has the practice?



Bedside Assessment

- » How compliant is staff with the basic UTI bundle?

From here we work with you to plan the best course of action for product, education and CAUTI reduction goals.

Making it easier to do the right thing.

ERASE CAUTI's three distinct bundles promote components of care that are recommended for all patients to reduce CAUTI risk.

Overview of ERASE CAUTI Bundles

BLADDER BUNDLE

The Bladder Bundle helps reduce unnecessary IUCs by providing diagnostic tools and alternatives to catheterization. It's also useful for helping manage incontinence and urinary retention after a catheter is discontinued.

IUC STANDARDIZATION BUNDLE

The core of the ERASE CAUTI solution is the IUC Standardization Bundle. Its patented one layer tray introduces a systematic approach to evaluating IUC appropriateness and ensuring proper insertion technique.

CARE AND MAINTENANCE BUNDLE

The Care and Maintenance Bundle supports the IUC Bundle by facilitating the proper management, continual assessment and timely removal of IUCs.



Discovery Assessments help identify areas for improvement and allow the bundles to be customized to your facility's specific needs.



Products to Support Practice

- » Bladder scanner
- » Nurse-designed intermittent catheter tray
- » Men's Liberty Acute Male External Catheter

Products to Support Practice

- » Nurse-designed IUC tray
 - Components sequenced to minimize the risk of contamination
 - Natural left-to-right flow

Products to Support Practice

- » SafeSecure® securement device
- » ReadyCleanse® premoistened cloths
- » Foley InserTag®



Education to Reinforce Behavior Change

- » Deciding Which Patients Need an IUC
- » Knowing the When, Why and How of Intermittent Catheterization
- » Finding Alternatives to IUCs in the Incontinent Patient

Education to Reinforce Behavior Change

- » Advanced IUC Course
- » Skills Validation Days
- » IUC Insertion Competency
- » IUC Training Video

Education to Reinforce Behavior Change

- » Maintaining an IUC and Closed Drainage System



Outcomes reporting provides you with the data to continually monitor progress, helping ensure that you achieve and sustain your CAUTI reduction goals.

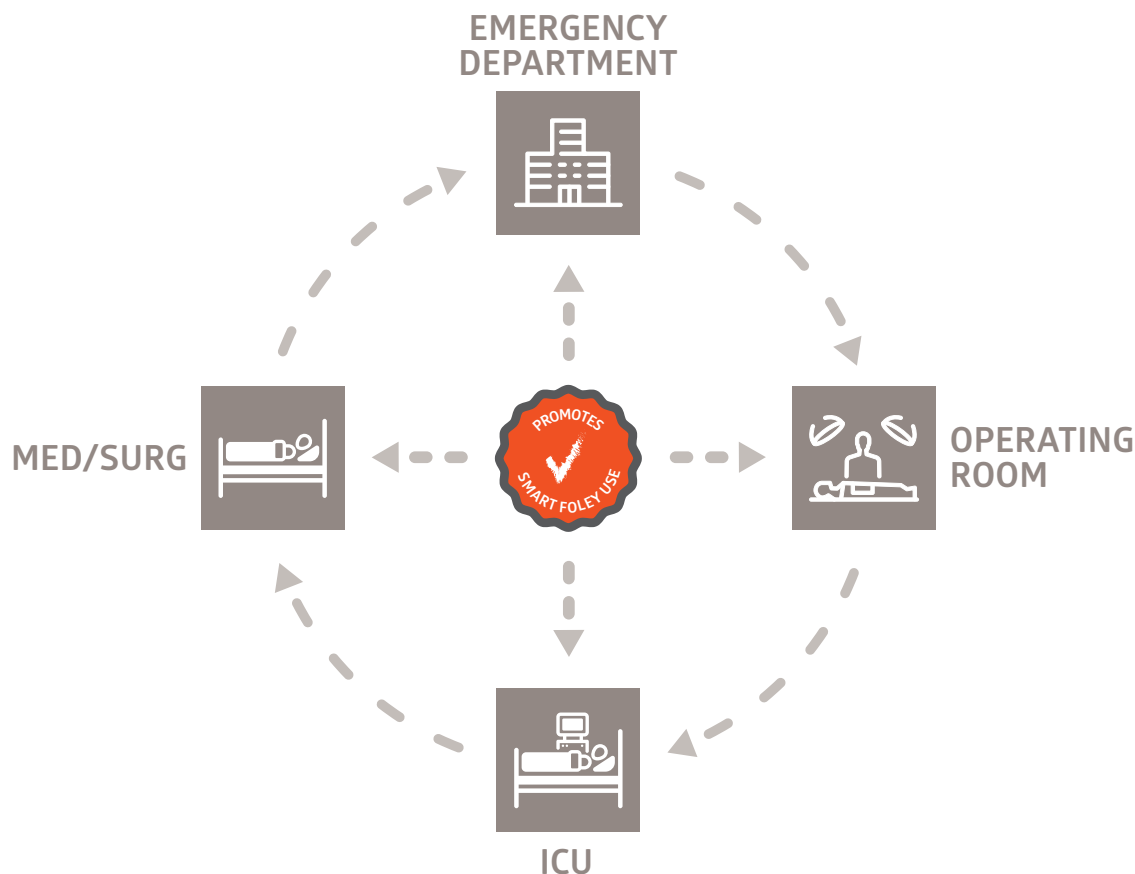
Helping you promote smart Foley use.



Look for this symbol on the pages ahead. It shows our commitment to helping you confidently choose the most appropriate, highest quality urological product for each patient. From Accuryr Foley catheters for high acuity critical care patients—whose care requires exceptionally accurate data—to external and intermittent catheters for lower acuity medical/surgical patients, we offer everything you need for excellent, patient-centered care.

Choose the right products for each step along the patient's journey

From the emergency department to the operating room and all across the hospital, our bundles empower you to improve care and outcomes while lowering CAUTI risk.



BLADDER BUNDLE



The ERASE CAUTI Bladder Bundle is the first line of defense in CAUTI prevention and the foundation of a Smart Foley approach. It enables clinicians to influence outcomes by assessing bladder function and then leveraging the right alternatives at the bedside. Most patient care will begin and end with the bladder bundle.

BioCon 750
Bladder Scanner



The ANA, APIC and CDC/HICPAC recommend the use of bladder scanners and intermittent catheterization to help avoid unnecessary catheterization in patients with bladder emptying dysfunction.^{4, 11, 12}

Total One Layer
Intermittent
Catheter Tray



One hospital reduced its rate of CAUTI by **38-50%** over 12 months by using bladder scanners.¹³



Supporting Products

Retention

Bladder Scanner

The BioCon® 750 Bladder Scanner with BladderPoint® technology provides accurate, timely measurements and 3-D images to help caregivers evaluate if a urinary catheter is necessary.

Intermittent Catheter Tray

Components in the Medline Total One Layer Intermittent Catheter Tray follow a nurse-designed flow to help drive proper practice and insertion. The pre-connected collection bag allows for more hands-free bladder drainage and the perineal cleansing cloth reminds nurses to cleanse before insertion.

Incontinence

Men's External Catheter

The Men's Liberty Acute External Catheter has a completely external, noninvasive design that helps reduce the risk of infection associated with indwelling catheters. It directs urine away from the skin to avoid moisture-related skin breakdown while keeping patients dry and comfortable.

Alternatives for Managing Incontinence

ANA Guidelines recommend urinals, to aid prompted voiding, and briefs, drypads and male external catheters to help manage incontinence and maintain skin integrity.¹³



Education and Training

Online Courses

- » Deciding which Patients Need an IUC
- » Finding Alternatives to IUCs in the Incontinent Patient
- » Knowing the When, Why and How of Intermittent Catheterization

Training Videos

- » Bladder Scanner Training
- » Inserting an Intermittent Catheter
- » Men's Liberty Acute Inservice Video

Support Materials

- » ANA CAUTI Prevention Tool
- » Does Your Patient Need An IUC Poster
- » Huddle Sheets



Briefs

Drypads

Urinals



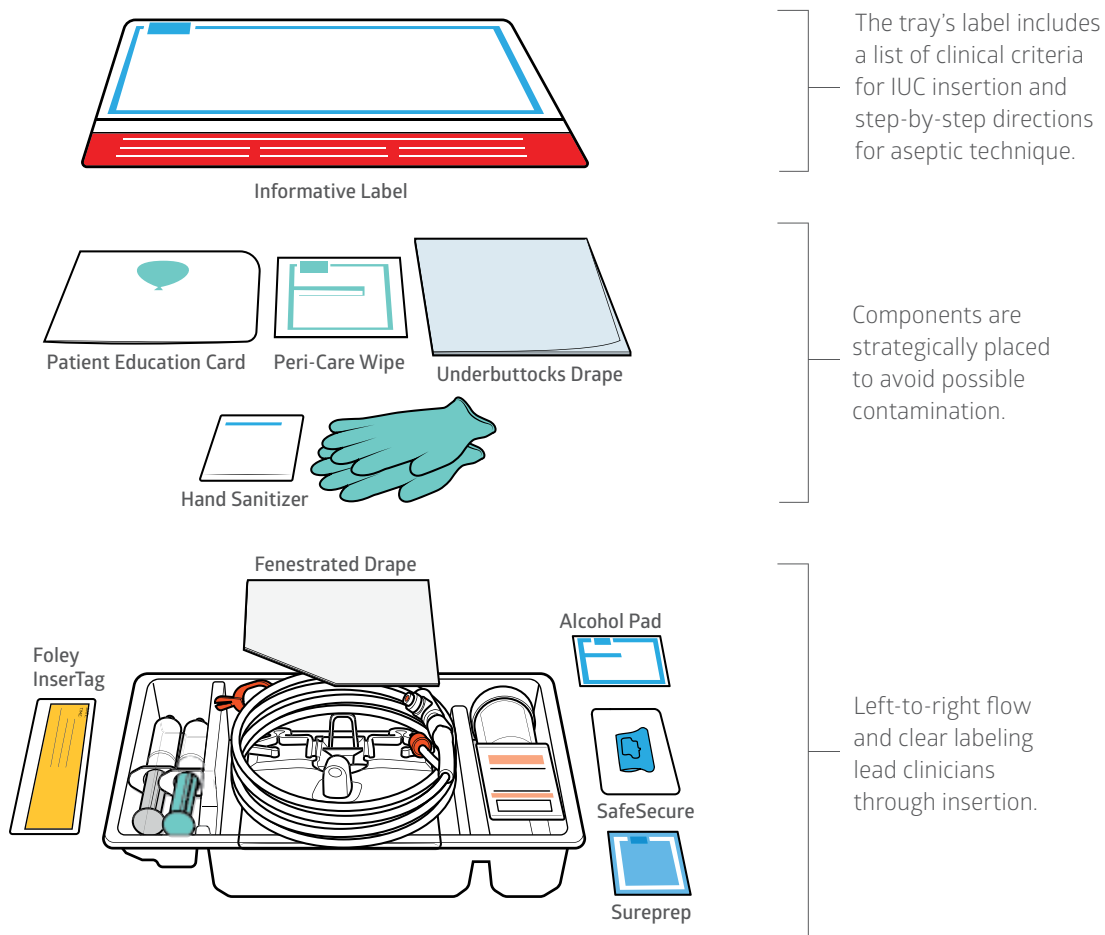
Men's Liberty Acute External Catheter

One study showed a **46% decrease** in total urinary device days when using the Men's Liberty Acute External Catheter.¹⁴

IUC STANDARDIZATION BUNDLE



The IUC Standardization Bundle is designed to reinforce the limitation of IUC use to only when necessary, and facilitates best practice insertion technique. The cornerstone of the bundle is a patented one layer tray that helps staff intuitively follow aseptic technique and minimize variance. Designed by nurses for nurses, the tray guides clinicians, left to right, through the insertion process. Components are organized in order of use, minimizing the risk of contamination.





Supporting Products

Innovative IUC Tray

Patented one layer tray uses the ERASE acronym to lead staff through evidence-based insertion practices.

Accuryn®

The Accuryn Monitoring System transforms the traditional indwelling urinary catheter (IUC) into a next-generation diagnostic tool for precise, real-time measurement of intra-abdominal pressure (IAP), urine output (UO) and core body temperature to help guide care—all at the push of a button.



IUC Tray



Education and Training

Onsite Education

- » Advanced IUC Course
- » Skills Validation Days

Online Courses

- » Understanding Different Types of IUCs
- » Preparing the Patient for IUC Insertion
- » Sterile Insertion of an IUC
- » Engaging Patients and Families in Reducing the Risk of CAUTIs

Interactive Competency

- » Best Practice Techniques and Aseptic Insertion of IUCs Using Medline's Total One Layer Tray

Training Videos

- » One Layer IUC Tray

Support Materials

- » IUC Selection Tool
- » One Layer Tray Poster
- » IUC Best Practices Poster
- » Huddle Sheets

"With regard to urine measurement, there hasn't been this level of innovation since the actual development of the Foley."

Gregory J. Schears, MD
Rochester, MN

Accuryn Monitoring System

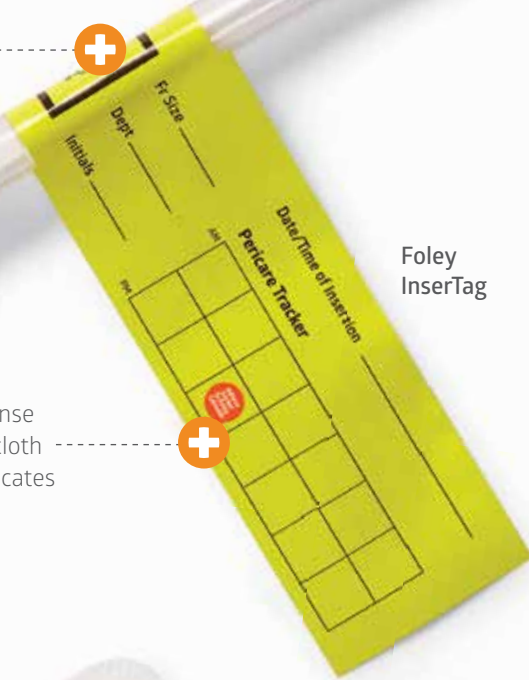


CARE AND MAINTENANCE BUNDLE



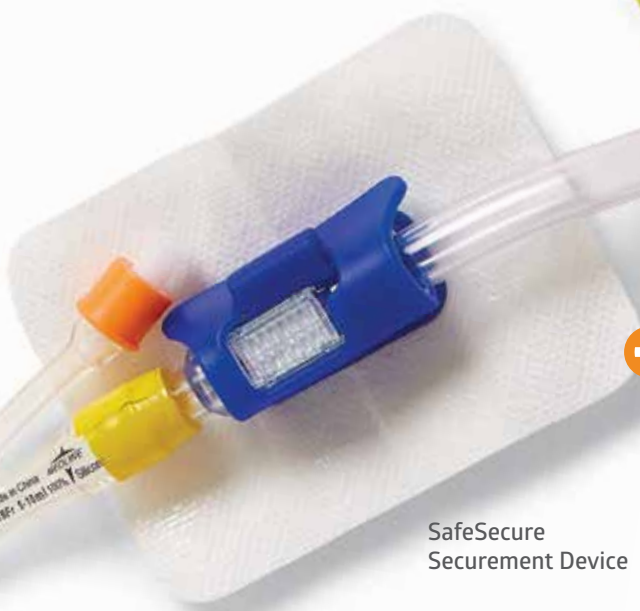
The best way to prevent a CAUTI, once the Foley has been properly inserted, is to perform catheter care until the IUC can be promptly removed. Proper perineal and catheter care are essential for patients who have an IUC. The Care and Maintenance Bundle includes resources to follow evidence-based practices for securement, perineal hygiene, drain bag placement and emptying, and timely IUC removal.

Many catheters are left in too long.⁶ The Foley InsertTag helps prompt timely catheter removal.



Foley InsertTag

ReadyCleanse cleansing cloth sticker indicates Foley care.



SafeSecure Securement Device

Safesecure helps prevent movement and minimizes urethral traction without any rigid pieces that might cause pressure injuries.





Supporting Products

SafeSecure® Securement Device

CDC/HICPAC guidelines and the Joint Commission's National Patient Safety Goals recommend securing catheter tubing to ensure unobstructed urine flow and drainage.^{4,15} SafeSecure's low-profile design is gentle on skin and minimizes urethral traction. In a poll, 95% of nurses said they would be interested in using SafeSecure instead of their current securement device.

Foley InsetTag®

Indwelling Urinary Catheters (IUCs) should be used only as long as they are clinically necessary. Our Foley InsetTag is a visual reminder to prompt clinicians to consider IUC removal. It also helps support compliance with CDC/HICPAC recommendations to document the catheter insertion date.⁴

ReadyCleanse® Catheter and Perineal Care Cloths

One of the biggest risks involved with urinary catheters is the potential for infection.¹⁶ Proper hygiene can help to reduce this risk. The ReadyCleanse system provides five soft, smooth cloths premoistened with a pH-balanced, hypoallergenic solution for cleaning the perineum and catheter.



Education and Training

Online Courses

- » Maintaining an IUC and Closed Drainage System

Training Videos

- » Securement Device Application
- » Proper Perineal and Catheter Care

Support Materials

- » Proper Peri-Care and IUC Maintenance Poster
- » Facilitating Drainage Poster
- » Proper Balloon Deflation Poster
- » Huddle Sheets

ReadyCleanse helps staff follow the American Nurses Association (ANA) recommendations to perform perineal care at least daily per facility protocol and when necessary.¹³

ReadyCleanse Catheter
and Perineal Care Cloths



Protocol for use
on packaging -----



CLINICAL EDUCATION

Applying Knowledge to Practice.

Sustained results are possible only when best practice techniques are used on every patient, every time. The ERASE CAUTI Solution's comprehensive education and training program actively reinforces best practices for CAUTI prevention, helping ingrain them in your staff. The program also supports compliance with CDC/HICPAC recommendations to provide education about CAUTI and alternatives to IUCs, as well as periodic training on techniques and procedures for urinary catheter insertion, maintenance and removal.⁴

ONSITE EDUCATION

Courtesy Rounding

Ensures that staff on all shifts are familiar with best practice techniques for catheter insertion, maintenance and removal.

Skills Validation

Gives your staff hands-on experience inserting and removing IUCs on an anatomical model. Credentialed Medline clinicians evaluate the clinical technique used by staff and provide a report that summarizes competency.

Advanced IUC Course

The Advanced IUC Catheter course helps create ERASE CAUTI champions throughout your organization. Taught onsite by Medline clinicians, this classroom-style course consists of four modules:

- » **Module 1** This module describes appropriate and inappropriate indications for IUC use and how to select the proper catheter material and drain bag system. Moreover alternatives to IUCs are discussed.
- » **Module 2** This module details how Medline's one-layer IUC tray intuitively guides clinicians through aseptic insertion process based on best practice.
- » **Module 3** This module provides insertion techniques and tips for special patient populations.
- » **Module 4** This module discusses overall best practice for IUC, such as sampling, emptying, irrigation and catheter and perineal care.

ONLINE COURSES

Online curriculum through Medline University gives you and your staff 24/7 access to a continually growing list of ERASE CAUTI education courses, including two CEUs.*

- » Course 1: reviews different types of IUCs, how to properly prepare and insert the catheter, and proper maintenance techniques.
- » Course 2: explains alternatives to IUCs, including when and how to use an intermittent urinary catheter.
- » The One Layer IUC Tray Interactive Competency validates the transfer of knowledge in a practical setting.

All course offerings emphasize standardization of care and ensure staff understand evidence-based guidelines from CDC/HICPAC, Joint Commission, SHEA and APIC.

*Approved as continuing education contact hours by the Florida Board of Nursing and the California Board of Registered Nursing.

TRAINING VIDEOS

Training videos show existing and new staff how to correctly use products and follow appropriate procedures to achieve the best results.

SUPPORT MATERIALS

Informational posters, huddle sheets, outcome reporting and other tools complement the education courses to reinforce behavior change, teamwork and communication, helping ensure sustained results.

References:

1. Urinary Tract Infection (Catheter-Associated Urinary Tract Infection (CAUTI) and Non-Catheter-Associated Urinary Tract Infection (UTI) and Other Urinary System Infection (USI) Events. Centers for Disease Control and Prevention website. Available at: <http://www.cdc.gov/nhsn/PDFs/pscManual/7pscCAUTIcurrent.pdf>. Accessed August 21, 2015.
2. Saint S, Olmsted RN, Fakh MG, et al. Translating Health Care-Associated Urinary Tract Infection Prevention Research Into Practice via the Bladder Bundle. *The Joint Commission Journal on Quality and Patient Safety*. 2009;35(9), September 2009:449-455. Available at: <http://www.ncbi.nlm.nih.gov/pmc/articles/PMC2791398/> Accessed August 24, 2015.
3. How-To Guide: Prevent Catheter-Associated Urinary Tract Infection. Institute for Healthcare Improvement; 2011. Available at: <http://www.ihl.org/resources/Pages/Tools/HowtoGuidePreventCatheterAssociatedUrinaryTractInfection.aspx>. Accessed August 21, 2015.
4. Gould CV, Umscheid CA, Agarwal RK, Kuntz G, Pegues DA. Guideline for Prevention of Catheter-Associated Urinary Tract Infections 2009. *Infect Control Hosp Epidemiol* 2010;31:319-26. Available at <http://www.jstor.org/stable/10.1086/651091> Accessed August 21, 2015.
5. Hollenbeak CS and Schilling AL. Attributable cost of catheter-associated urinary tract infections in the United States: A systematic review. Published Online: February 22, 2018 (<https://doi.org/10.1016/j.ajic.2018.01.015>). Available at:[http://www.ajicjournal.org/article/S0196-6553\(18\)30036-1/fulltext](http://www.ajicjournal.org/article/S0196-6553(18)30036-1/fulltext). Accessed May 24, 2018.
6. R3 Report: Catheter-Associated Urinary Tract Infections, Oakbrook Terrace, IL: The Joint Commission; 2011. Available at: http://www.jointcommission.org/assets/1/18/R3_Report_Issue_2_9_22_11_final.pdf. Accessed August 21, 2015.
7. Association for Professionals in Infection Control and Epidemiology. On the CUSP: Stop CAUTI Supplement—Spring 2014. Available at: http://apic.org/Resource_/PublicationIssueForm/10510bd2-57f0-42f4-ace0-ccd0ddf23b65/File/On-CUSP-Stop-CAUTI-final-supplement.pdf Accessed August 21, 2015.
8. Hanchett M. Preventing CAUTI: A Patient-Centered Approach. *Prevention Strategist* 2012;9:42-50. Available at: http://apic.org/Resource_/TinyMceFileManager/epublications/CAUTI_feature_PS_fall_12.pdf Accessed September 16, 2015.
9. Krein SL, Kowalski CP, Harrod M, et al. Barriers to Reducing Urinary Catheter Use: A Qualitative Assessment of a Statewide Initiative. *JAMA Internal Medicine*. 2013;173(10):881-886. Available at: <http://www.ncbi.nlm.nih.gov/pmc/articles/PMC3665648/> Accessed September 21, 2015.
10. Green M. Standard Use Catheter May Be Linked to CAUTIs: 6 Things to Know. *Becker's Hospital Review*. July 29, 2015. Available at: <http://www.beckershospitalreview.com/quality/standard-use-catheter-may-be-linked-to-cautis-6-things-to-know.html?tmpl=component&print=1&layout=default&page=> Accessed July 31, 2015.
11. Streamline Evidence-Based RN Tool: Catheter Associated Urinary Tract Infection (CAUTI) Prevention. American Nurses Association. Available at: <http://www.nursingworld.org/MainMenuCategories/ThePracticeofProfessionalNursing/Improving-Your-Practice/ANA-CAUTI-Prevention-Tool/ANA-CAUTI-Prevention-Tool.pdf> Accessed August 24, 2015.
12. Greene L, Marx J, Oriola S. Guide to the Elimination of Catheter-Associated Urinary Tract Infections (CAUTIs). Association For Professionals in Infection Control and Epidemiology. Available at: http://www.apic.org/Resource_/EliminationGuideForm/c0790db8-2aca-4179-a7ae-676c27592de2/File/APIC-CAUTI-Guide.pdf.
13. Saint S, Kowalski CP, Kaufman SR, et al. Preventing Hospital-Acquired Urinary Tract Infection in the United States: A National Study. *Clin Infect Dis*. 2008;46(2):243-250. Available at: <http://cid.oxfordjournals.org/content/46/2/243.full> Accessed August 21, 2015.
14. Quayle BL. Taking the next steps for patient safety and excellence in CAUTI prevention. Poster presented at: Association for Professionals in Infection Control and Epidemiology (APIC) 44th Annual Conference; June 14-16, 2017; Portland, OR.
15. 2015 National Patient Safety Goals. The Joint Commission. Available at: http://www.jointcommission.org/assets/1/6/2015_NPSG_HAP.pdf Accessed November 4, 2015.
16. Transcript of catheter-associated UTIs presentation by Dr. Sanjay Saint. Centers for Disease Control and Prevention website. Available at: http://www.cdc.gov/hicpac/uti_saint_video.html Accessed August 6, 2015.

Leading the Way in Patient Safety



Medline
Clinical
Solutions

The ERASE CAUTI Comprehensive Care Solution is part of the Medline Clinical Solutions program. Medline Clinical Solutions combines specialized education, evidence-based products and outcomes management to help you elevate quality of care, meet regulatory standards and reduce costs.

Our solutions include:



Education: Our courses cover the basics of care and teach teamwork, leadership and how to implement change.



Products: Our clinically-proven products provide breadth and depth across the continuum of care.



Outcomes: Our useful tools ensure that learnings get applied to practice and help track results.

Our expertise:

In the areas of readmission reduction, infection prevention, skin care and diabetes management, Medline offers teams of scientists, nurses and Ph.D.'s who understand today's healthcare challenges. These experts conduct detailed analyses, recommend solutions and monitor implementation and results, with an emphasis on standardization of care.

This approach is reinforced by the industry's broadest line of high-quality products and supported by an education program that goes beyond the basics of care to address challenges such as leadership, communication and onboarding.

"We used to think that UTIs couldn't be prevented. Now we know that specific actions—placing urinary catheters only when necessary and for the shortest amount of time possible, using aseptic technique and performing proper peri-care—can have a positive impact on lowering infection rates," says **Martie Moore, RN, MAOM, CPHQ, and chief nursing officer at Medline Industries, Inc.** "Medline's ERASE CAUTI comprehensive care solution gives you an effective process for making these actions second nature and sustained improvements achievable."

—*Martie Moore*
Chief Nursing Officer
Medline Industries, Inc.



Medline Industries, Inc. Three Lakes Drive, Northfield, IL 60093

FOLLOW US

Medline United States
1-800-MEDLINE (633-5463)
medline.com | info@medline.com

Medline Canada
1-800-396-6996
medline.ca | canada@medline.com

Medline México
01-800-831-0898
medlinemexico.com | mexico@medline.com

Some products may not be available for sale in Mexico or Canada. We reserve the right to correct any errors that may occur within this brochure. © 2018 Medline Industries, Inc. All rights reserved. ATI is a trademark and Assessment Technologies Institute is a registered trademark of Assessment Technologies Institute®, LLC. BladderPoint, ERASE CAUTI, Foley InsetTag, Medline, ReadyCleanse and SafeSecure are registered trademarks of Medline Industries, Inc. Accuryrn is a registered trademark Potrero Medical, Inc. MKT1895059 / LIT787 / 1M / SG / 15