

Durable medical equipment product guide



Empowering health, enhancing lives.



Your Trusted Partner for Everyday Equipment Needs

Built to last, ready to ship,
delivered when and where you need it.

The right equipment can make all the difference. That's why we offer durable, high-quality products designed to support care at every level. From hospital beds to mobility aids and everything in between, you'll find dependable solutions and a team that's ready to help.

Need it fast? No problem. With reliable drop-ship service and on-time delivery, we get your order where it needs to be—hassle-free.

Your Medline Representative is ready to help, offering friendly guidance and smart inventory tips so you can focus on what matters most—the people you care for.

50+
distribution
centers

Next-day shipping to
95% of U.S.
customers

Service that goes the distance



Product availability you can count on

We make sure you have what you need to deliver care.



End-to-end support

From dock to stock, we deliver the supplies you need, when you need them.



Ongoing support

We partner with you, so you're ready for whatever comes your way.

What's inside:

Oxygen Concentrator	6
Crutches	9
Knee Walkers	14
Mobility Rack	15
Caregiver Kits	16
Canes	18
Rollators	24
Walkers	32
Transport Chairs	38
Wheelchairs	42
Bath Safety	58
Homecare Beds and Accessories	70
Aids for Daily Living	75
Patient Lifts	76

Watch for these icons to see what's new—and what saves you time.

Discover the latest industry-leading products and hundreds of tool-free assembly options designed to make your work easier and faster.

New



Tool-free Assembly



K1186N22S
p. 46

The best of Medline's featured products



Page 6

5-liter Oxygen Concentrator

Provides oxygen therapy to those who suffer from certain chronic conditions.



Page 48

Guardian® K3 Wheelchair

Durable, hammertone frame with easy-to-clean nylon upholstery. Swing-back arms are also removable for easy transfers and storage.



Page 19

Offset Handle Fashion Cane

Stride in style with Medline's lightweight, adjustable fashion cane—the perfect blend of mobility aid and trendy accessory.



Page 65

Sliding Transfer Bench

Slides from one side to the other to make transfers to/from the tub or shower, easier.



Page 63

360 Swivel Bath Chair

Enter and exit the shower with ease. 360 degree rotating seat locks in 4 places for smooth movements.



Page 58

Standard Steel Commode

Includes seat, lid, bucket and splash guard—built for comfort and stability with a 350 lbs weight capacity and roomy, easy-access design.

Page 22



4U™ Offset Folding Hybrid Cane

Where comfort meets style—with fold-and-go portability and a self-standing 4-point base.

Page 32



Two-Button Folding Walker with 5" Wheels

Folds down in a flash with a simple pushbutton, mechanism, gliding through tight spaces effortlessly.

Page 24



Basic Folding Steel Rollator

Built tough with powder-coated steel, and handy under-seat storage.

Page 52



Guardian Extra-Wide Reclining Wheelchair

Recline your way (90°–180°)—with quick-adjust handles, easy-clean vinyl, a tough-yet-chic Hammertone frame, plus all the must-haves.

Page 73



Lightweight Bariatric Bed

All-steel frame and heavy-duty pan deck enhance patient safety. One person set-up.

Page 70



Basic Homecare Bed

Built for comfort, safety and ease—from smooth transport and pinch-free design to quick setup, backup power and reliable warranty coverage.

Oxygen Concentrators

When health-related conditions cause breathing-related disorders, individuals may be prescribed an oxygen therapy through an oxygen concentrator. Oxygen concentrators filter surrounding air, compressing it to the required density and delivering purified medical-grade oxygen into a pulse-dose delivery system or continuous stream system.

5B Oxygen Concentrators Tool-free Assembly

- Compact, quiet and lightweight; moves with the user effortlessly with 8-ft power cord and stabilizes easily with locking casters
- Easy-to-read angled flow meter
- Quiet motor provides 24/7 continuous oxygen flow between 0.5–5 L/min
- Easy to access humidifier bottle via elastic band and filters for simple maintenance
- Audiovisual OPI (oxygen percentage indicator) alarm sounds and glows yellow at a low oxygen level (82%) and red at a very low oxygen level (73%) to improve safety during use
- The compressor is equipped with a thermal overload protector and pressure relief valve for additional safety
- Other safety features include a power failure alarm and a current protector
- 3-year warranty

O2-5B5LBK



Item No.	Description	Flow Range (LPM)	Oxygen Purity	Noise dB(A)	Power (W)	Weight	HCPCS	Retail Pkg.	Pkg.
O2-5B5LBK	16.2"W x 10.25"D x 22.5"H	0.5–5L	93%±3%	≤41 dB(A)	360 Watts	28 lbs	E1390	N	1 ea

5B Oxygen Concentrator Parts

Item No.	Description	Pkg.
O25B5LBKCBFCV	Cabinet Air Filter and Cover Set	20/cs
O25B5LBKCBFL	Cabinet Air Filter	25/cs
O25B5LBKCSTR4	4-Piece Caster Set	25/cs
O25B5LBKINFCV	Intake Filter Cover	25/cs
O25B5LBKINTFL	Intake Filter	24/cs

5A Oxygen Concentrator Tool-free Assembly

- Advanced motor provides 0.5L to 5L per minute of continuous oxygen flow, with an easy-to-read angled flow meter
- Audiovisual OPI (oxygen percentage indicator) alarm sounds and glows yellow at a low oxygen level (82%) and red at a very low oxygen level (73%) to improve safety during use
- Easy to access humidifier bottle via elastic band and filters for simple maintenance
- Includes a purity oxygen percentage indicator and internal power failure alarm function
- Other safety features include a compressor equipped with a thermal protector, an overpressure protection valve and a current protector
- Casters and an 8' cord allow for transport from room to room and simple positioning within reach
- 5-year warranty



Item No.	Description	Flow Range (LPM)	Oxygen Purity	NoisedB(A)	Power (W)	Weight	HCPCS	Retail Pkg.	Pkg.
O2-5A5LW	13"W x 10.2"D x 21.2"H	0.5-5L	93%±3%	≤43 dB(A)	450 Watts	35 lbs	E1390	N	1 ea

5A Oxygen Concentrator Parts

Item No.	Description	Pkg.
O25A5CBFLTR25	Cabinet Air Filter	25/cs
O25A5LWCSTR4	Casters, Black	4/st, 25 st/cs
O25A5LWINFCV	Intake Filter Cover	20/cs
O25A5LWINTFLT	Intake Filter	24/cs

Portable Oxygen Concentrator, Pulse Dose Tool-free Assembly

- Six adjustable pulse flow settings (1-6) delivering up to 1,260 ml/min for personalized oxygen therapy.
- Large, easy-to-read color LCD display with intuitive interface for simple operation.
- Provides reliable breath detection at lower pressures.
- Multiple power options: AC, DC, or rechargeable battery with single or dual battery configurations for extended use.
- Compact design for 24/7 use at home or on the go, conveniently fitting into a carry bag.



Item No.	Description	Flow Range	Oxygen Purity	Noise dB(A)	Weight	HCPCS	Retail Pkg.	Pkg.
O2-6POC	Portable Oxygen Concentrator, Pulse Dose	1-6 pulse	93%±3%	≤42 dB(A)	Single Battery: 4.8 lbs Double Battery: 5.7 lbs	E1392	N	1 ea

Portable Oxygen Concentrator Parts

Item No.	Description	Pkg.
O2- POC5B	Single Battery	1 ea
O2- POC5B	Double Battery	1 ea
O2-6POCEBC	External Battery Charger	1 ea
O2-POCFL	Filter Kit	25/cs
O2-POCSV	Sieve Bed	1 ea
O2- POCAD	AC Adaptor + Power Cord	1 ea
O2-POCBAG	Carry Bag	1 ea



Oxygen Concentrator Compatible Parts

Item No.	Description	Pkg.
O2PREFLBLHLDR	Prefilled Bubble Humidifier Holder for 5A and 5B	10/pk
O25B5LBKHMDCN	Humidifier Connector for 5B	25/cs
O25B5LBKBTLHM	Bubble Humidifier for 5B	25/cs

Medline SuperSoft Oxygen Cannulas

- Advanced material is soft, flexible and non-tacky with curved, non-flared nasal prongs
- Promote patient compliance with added comfort—patients are less apprehensive about wearing a cannula that feels soft and comfortable
- Available with a standard or universal connector

Item No.	Description	Pkg.
HCSS4514S	7-ft Tubing and Standard Connection	50/cs
HCSS4516S	14-ft Tubing and Standard Connection	50/cs
HCSS4515S	25-ft Tubing and Standard Connection	25/cs

Medline Clear Tubing

Item No.	Description	Pkg.
HCS4507	7-ft Standard Connector Tubing	50/cs
HCS4524	14-ft Standard Connector Tubing	50/cs
HCS4525	25-ft Standard Connector Tubing	25/cs
HCS4507G	7-ft Standard Connector with Green Tubing	50/cs
HCS4524G	14-ft Standard Connector with Green Tubing	50/cs
HCS4525G	25-ft Standard Connector with Green Tubing	25/cs



O2PREFLBLHLDR

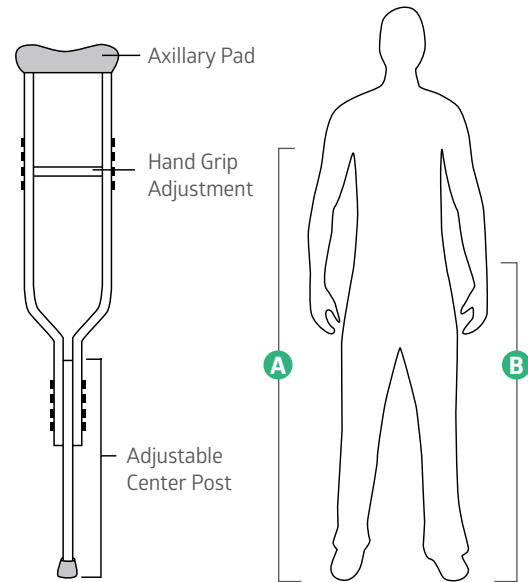


O25B5LBKBTLHM

Crutches

Crutches are the traditional mobility aid when one leg is almost entirely non-weightbearing. All axillary (under the arm) models can be adjusted easily to both key measures: overall height and hand height.

1. Select a pair of crutches that's appropriate to the weight and height of the subject.
2. When sizing for axillary crutches, first measure from the ground to near the bottom of the axilla, or armpit. The crutch cushion should be 2" to 3" below the axilla. When standing straight, the cushion should not be touching the axilla. This measurement will be the overall crutch height. (See Dimension A)
3. Keeping arms at your side with a natural bend at the elbow, measure from the ground to the center of the wrist. This measurement will be the hand grip height. (See Dimension B)



Premium Red-Dot® Axillary Crutches Tool-free Assembly

- Lightweight and durable aluminum
- Red-Dot handgrip for quick and easy sizing

Item No.	Wt. Cap.	Size	Patient Ht.	HCPSC	Pkg.
G90-214-8	300 lbs	Tall	5'10"-6'6"	E0114	8 pr/cs
G90-214-8H	300 lbs	Tall	5'10"-6'6"	E0114	1 pr
G91-214-8	300 lbs	Adult	5'2"-5'10"	E0114	8 pr/cs
G91-214-8H	300 lbs	Adult	5'2"-5'10"	E0114	1 pr
G92-214-8	300 lbs	Youth	4'6"-5'2"	E0114	8 pr/cs
G92-214-8H	300 lbs	Youth	4'6"-5'2"	E0114	1 pr



Universal Folding Crutch New Tool-free Assembly

- Adjusts to fit all three sizes: youth, adult and tall adult
- Red-Dot clips for quick sizing
- Folding for easy storage and transportation
- Thick underarm pads for added comfort

Item No.	Wt. Cap.	Size	Patient Ht.	HCPSC	Pkg.
MDS90540FH1	300 lbs	Universal	4'7"-6'7"	E0114	1 pr



3-in-1 Quick-Fit Axillary Crutches Tool-free Assembly

- Adjusts to fit all three sizes: youth, adult and tall adult
- Red·Dot® easy hand-grip adjustments
- I-beam height adjustment
- Made of lightweight and durable aluminum

Item No.	Wt. Cap.	Size	Patient Ht.	HCPCS	Pkg.
MDS80540	300 lbs	Universal	4'7"-6'7"	E0114	2 pr/cs
MDS80540H1	300 lbs	Universal	4'7"-6'7"	E0114	1 pr
MDS80540-8	300 lbs	Universal	4'7"-6'7"	E0114	8 pr/cs



MDS80540-8

Standard Axillary Crutches Tool-free Assembly

- Made of lightweight and durable aluminum
- I-beam helps reduce wobbliness

Item No.	Wt. Cap.	Size	Patient Ht.	HCPCS	Pkg.
MDSV80534	300 lbs	Tall	5'10"-6'6"	E0114	8 pr/cs
MDSV80534H1	300 lbs	Tall	5'10"-6'6"	E0114	1 pr
MDSV80535	300 lbs	Adult	5'2"-5'10"	E0114	8 pr/cs
MDSV80535H1	300 lbs	Adult	5'2"-5'10"	E0114	1 pr
MDSV80536	300 lbs	Youth	4'6"-5'2"	E0114	8 pr/cs
MDSV80536H1	300 lbs	Youth	4'6"-5'2"	E0114	1 pr



MDSV80535H1

Child-Size Axillary Crutches Tool-free Assembly

- Sized for youngsters
- Made of lightweight and durable aluminum

Item No.	Wt. Cap.	Size	Patient Ht.	HCPCS	Pkg.
MDS80337Z	250 lbs	Child	4'0"-4'6"	E0114	2 pr/cs
MDS80337HH	250 lbs	Child	4'0"-4'6"	E0114	1 pr



MDS80337Z

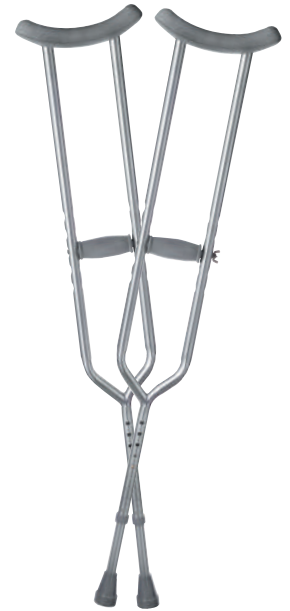
Premium Bariatric Axillary Crutches Tool-free Assembly

- Heavy-duty steel for demanding healthcare use
- Push buttons allow easy height adjustment

Item No.	Wt. Cap.	Size	Patient Ht.	HCPCS	Pkg.
MDS80334XW	650 lbs	Tall	5'10"-6'6"	E0114	1 pr
MDS80335XW	650 lbs	Adult	5'2"-5'10"	E0114	1 pr



MDS80334XW



MDS80335XW

TAA Axillary Crutches Tool-free Assembly

- Standard aluminum crutches
- Feature a double extruded center tube that provides load-bearing strength where it's needed most

Item No.	Wt. Cap.	Size	Patient Ht.	HCPCS	Pkg.
TAA80534	300 lbs	Tall	5'10"-6'6"	N/A	8 pr/cs
TAA80534LFH	300 lbs	Tall	5'10"-6'6"	N/A	1 pr
TAA80535	300 lbs	Adult	5'2"-5'10"	N/A	8 pr/cs
TAA80535LFH	300 lbs	Adult	5'2"-5'10"	N/A	1 pr
TAA80536	300 lbs	Youth	4'6"-5'2"	N/A	8 pr/cs
TAA80536LFH	300 lbs	Youth	4'6"-5'2"	N/A	1 pr



TAA80535



MDS80542

Single-Tube Crutches Tool-free Assembly

- Heavy-duty steel for demanding healthcare use
- Large tip helps provide greater surface contact than most standard style crutches

Item No.	Wt. Cap.	Size	Patient Ht.	HCPCS	Pkg.
MDS80542	400 lbs	Universal	4'6"-6'6"	E0110	8 pr/cs
PRECRUTCH	300 lbs	Universal	4'9"-6'7"	-	1 pr

New

Standard Forearm Crutches Tool-free Assembly

- Lightweight and durable aluminum construction
- Telescoping parts are manufactured with internal bushings and external lock nuts to provide totally silent usage

Item No.	Wt. Cap.	Size	Patient Ht.	HCPCS	Pkg.
MDS805160	250 lbs	Tall	5'10"–6'6"	E0110	1 pr
MDS805161	250 lbs	Adult	5'0"–6'2"	E0110	1 pr
MDS805162	250 lbs	Youth	4'2"–5'2"	E0110	1 pr



MDS805161

Premium Forearm Crutches Tool-free Assembly

- Lightweight and durable aluminum construction
- Vinyl-coated, tapered, contoured arm cuffs mold to user for extra comfort

Item No.	Wt. Cap.	Size	Patient Ht.	HCPCS	Pkg.
G05163C	200 lbs	Child	3'2"–4'6"	E0110	1 pr



MDS805162

TAA Forearm Crutches Tool-free Assembly

- Telescoping parts are manufactured with internal bushings and external lock nuts to provide totally silent usage
- Vinyl-coated, tapered, contoured arm cuffs; heavy-wall, high-strength aluminum tubing

Item No.	Wt. Cap.	Size	Patient Ht.	HCPCS	Pkg.
TAA805160	250 lbs	Tall	5'10"–6'6"	-	1 pr
TAA805161	250 lbs	Adult	5'0"–6'2"	-	1 pr
TAA805162	250 lbs	Youth	4'2"–5'2"	-	1 pr



TAA805160

Crutch Replacement Accessories

Item No.	Description	HCPCS	Pkg.
MDS80266RW	Crutch Tip, Gray	A4637	6 pr/cs
MDS80268W	Medline Crutch Foam Hand Grip	A4636	1 ct/cs, 6 pr/cs
G222-0889	Medline Crutch Grip Accessory Kit	-	1 pr
G00842	7/8" Crutch and Cane Tip	A4637	8 pr/cs
G00841	7/8" Crutch and Cane Tip	A4637	8 pr/cs
MDS8054RT	Medline Single Tube Crutch Tip	-	8 pr/cs
MDS8054PAD	Medline Single Tube Underarm Crutch Pad	-	8 pr/cs
MDS80267W	Medline Foam Underarm Pads for Crutches	A6435	6 pr/cs
G222-0899	Bariatric Crutch Cushion	-	1 pr
MDS80269	Medline Crutch Accessory Kit	A4635 + A4636 + A4637	6 st/cs
MDSPPC107	Medline Crutch Grip and Underarm Pillow	A4635 + A4636	6 pr/cs
MDS80516CF	Medline Replacement Forearm Crutch Cuff	-	1 pr
G222-0906	Medline Replacement Forearm Crutch Cuff	-	1 pr



MDS80266RW



MDS80268W



MDS8054PAD



MDS80516CF



G222-0906

Knee Walkers

Knee walkers are a great alternative to crutches for below-the-knee injuries. We offer a range of mobility aids to fit all heights, shapes and sizes.

Economy Knee Walkers

- Easy to maneuver with hand brakes for stopping control
- Can be used with right or left leg

Item No.	Description	Wt. Cap.	Knee Pad Height	HCPCS	Retail Pkg.	Pkg.
MDS86000EB	8" Wheels, Blue	350 lbs (158.8 kg)	14.5"-21"	E0118	N	1 ea
MDS86000EJR	6" Wheels, Red	250 lbs (113.4 kg)	14"-17.5"	E0118	N	1 ea

Standard Knee Walker Tool-free Assembly

- Easy to maneuver with dual hand brakes for superb stopping control
- Can be used with right or left leg
- Comes with convenient basket for personal belongings

Item No.	Description	Wt. Cap.	Knee Pad Height	HCPCS	Retail Pkg.	Pkg.
MDS86000G4	8" Wheels, Black	300 lbs (136.1 kg)	17"-23"	E0118	N	1 ea

Seated Manual Scooter

- Padded seat for added comfort and sleek frame with disc brake
- Height adjustable for patients recovering from a lower-leg injury; front bar to rest injured leg

Item No.	Description	Wt. Cap.	Seat Height	HCPCS	Retail Pkg.	Pkg.
MDS86000SS	8" Wheels, Black	300 lbs (136.1 kg)	21"-28.5"	-	N	1 ea

All-Terrain Knee Walkers

- 4 all-terrain wheels move easily over indoor carpet, hardwood, tile and outdoor surfaces
- Memory foam knee pad for extra comfort

Item No.	Description	Wt. Cap.	Knee Pad Height	HCPCS	Retail Pkg.	Pkg.
ATKNEE	12" Wheels, Black	350 lbs (158.8 kg)	20"-26"	E0118	N	1 ea
ATKNEEJR	10" Wheels, Black	350 lbs (158.8 kg)	17.25"-24"	E0118	N	1 ea



MDS86000EB



MDS86000SS



ATKNEE

Mobility Rack

Space-saving merchandising display.

Products not included. Refer to the charts for recommended items to fill the rack. Contact your Medline Representative for more information.

Mobility Rack

Item No.	Description	Pkg.
MDSMOBRACK	Mobility Rack	1 ea



Easy to maneuver when re-stocking

Recommended Planogram

Walking Aids

Item No.	Description	Pkg.	Page
MDS86420	Offset Cane, Black	6/cs	18
MDS86430W	Folding T-Handle Cane	6/cs	21
4UCANE	Folding Hybrid Cane, Offset, Black	1 ea	22
4UCANEB	Folding Hybrid Cane, Offset, Blue	1 ea	22
MDS86222W	Quad Cane, Small Base, Black	2/cs	19
MDS86228	Quad Cane, Large Base, Black	2/cs	19
MDS86426W	Cane Tip	4/cs	23
MDS86425W	Quad Cane Tip	6/cs	23
MDS86410KDBW	Upright Folding Walker, 5" Wheels	1/ea	33
MDS86615K	Walker Basket	2/cs	36
G07850M	Flip Tray for Walkers	3/cs	36
MDCUPCANEHW	Cup and Cane Holder Combo Pack for Walker	6/cs	36
MDS86615BAG	2-Button Walker Bag	4/cs	36
MDS86615T	Walker Tip	1 pr	36
MDS86615SKI	Ski Gliders for Walkers	6 pr/cs	36
MDSWBALL	Walker Ball Glide	6 pr/cs	36
MDSRUBSKI	Walker Glide	6/cs	36
MDS86615L	10" Leg Replacement	1 pr	36
MDS86615W5	Footpiece, 5" Wheels	1 pr	36
MDS86615W5T	5" Walker Wheels and Glide Caps	1 pr	36
MDS86850ESKD	Basic Steel Rollator, Burgundy	1 ea	24
MDS808200KD	Lightweight Steel Transport Chair	1 ea	38

Aids for Daily Living

Item No.	Description	Pkg.	Page
MDS86031RCE	31" Reacher, Blue	6/cs	75
BA6800	Bed Assist Bar with Rounded Handle	1 ea	75

Bath Safety

Item No.	Description	Pkg.	Page
G2-101KRX1	Bath Chair with Back	1 ea	63
G2-201KRX1	Bath Chair without Back	1 ea	64
G3-100KBRX1	Transfer Bench with Back	1 ea	65

Caregiver Kits New

With an increasing older adult population and people with disabilities living longer, the need for caregiving is growing. Caregivers provide necessary support to someone who, due to age, illness, disability, or some other factor, cannot care for themselves.

At least 44 million Americans provide unpaid care for an adult or child, according to a report by the National Alliance for Caregiving and AARP. Women are much more likely to take on the caregiver role, although many men do it as well. Their patients are loved ones, most often a parent, spouse, or child (of any age) with special medical needs.

Did you know?

17.2% of middle-aged and older adults who are not currently caregivers expect to provide care or assistance in the next two years to a friend or family members with a health problem or a disability.¹

20% of adults aged 45–64 years who do not currently provide care to someone expect to do so in the future compared to 12.8% of adults aged 65 years and older.¹



Includes a support cane and foldable walker

Walk Steady Kit

Item No.	Description
WLK-CANEKIT10	Walker (MDS86410KDBW) and Cane (4UCANE)



Bathe Safe & Easy Kit, Transfer Bench

Item No.	Description
G3-600KRX1	Transfer Bench (G3-100KBX1) with Shower Curtain (G3-001RX1), 2-pk Loofah (G7-002X2)



Bathe Safe & Easy Kit, Shower Chair with Back

Item No.	Description
G2-611KRX1	Shower Chair with Back (G2-101KX1) with 12" Suction Grab Bar (G5-012SRX1), 2-pk Loofah (G7-002X2)



Bathe Safe & Easy Kit, Shower Chair without Back

Item No.	Description
G2-621KRX1	Shower Chair without Back (G2-201KRX1) with Suction Grab Bar (G5-012SRX1), 2-pk Loofah (G7-002X2)



Bathe Safe & Easy Kit, Premium Shower Chair

Item No.	Description
G2-615KRX1	Premium Shower Chair with Back (G2-105RX1), Shower Head (G7-100RX1), and Long-handled Loofah (G7-001X1)



Reach, Grab & Go Kit

Item No.	Description
DAILYAIDKIT10	Reacher (MDS86031RCE), T-Handle Cane (MDS86430WH) and Shoe Horn (MDSR020006)



Toileting Safe & Easy Kit, Commode

Item No.	Description
G1-600KRX1	Commode (G1-200X1) with Commode Liners (MDS89664LINER)



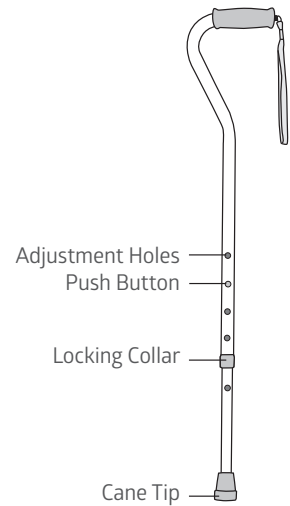
Toileting Safe & Easy Kit, Seat Riser

Item No.	Description
G4-602KRX1	Seat Riser (G4-502RX1) with LED Safety Light (G7-201RX1)

Canes

Standard canes with a single tip should be used for those looking for help with balance. Quad canes are useful for those looking to bear weight as they have a wider base. When sizing a cane, follow these steps:

1. Select a cane that's appropriate to the weight and height of the user.
2. With arms at side and a natural bend at the elbow, measure from the ground to the center of the wrist. This measurement will determine the ideal cane height.
3. Loosen the collar on the cane and press the push-button lock, slide the lower tube into or out of the body of the cane until you get to the wrist-height measurement, and let the push button "click" into the closest hole to the measurement. Tighten the collar (check and retighten the collar regularly).



Premium Offset Handle Canes Tool-free Assembly

- Offset handle design centers the user's weight over the strongest part of the cane
- Ergonomically designed to provide comfort and support for partial weight-bearing users
- Push-button, height-adjustable to find the perfect height
- Secured with a locking ring to provide quiet, rattle-free use and added safety

Item No.	Description	Wt. Cap.	Handle Material	Height Range	HCPCS	Retail Pkg.	Pkg.
G05355	Chrome	300 lbs (136.1 kg)	Vinyl	31"-40"	E0100	Y	6/cs
G05356	Black	300 lbs (136.1 kg)	Vinyl	31"-40"	E0100	Y	6/cs



Offset Canes Tool-free Assembly

- Single-point canes
- With foam handles and wrist straps

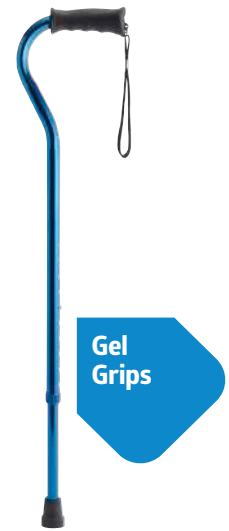
Item No.	Description	Wt. Cap.	Handle Material	Height Range	HCPCS	Retail Pkg.	Pkg.
MDS86420	Black	300 lbs (136.1 kg)	Foam	29"-38"	E0100	Y	6/cs
MDS86420H1	Black	300 lbs (136.1 kg)	Foam	29"-38"	E0100	Y	1 ea
TAA86420	Black	300 lbs (136.1 kg)	Foam	29"-38"	E0100	Y	6/cs
MDS86420BRZW	Bronze	300 lbs (136.1 kg)	Foam	29"-38"	E0100	Y	6/cs
MDS86420BRZH1	Bronze	300 lbs (136.1 kg)	Foam	29"-38"	E0100	Y	1 ea
MDS86420CHRW	Chrome	300 lbs (136.1 kg)	Foam	29"-38"	E0100	Y	6/cs
MDS86420CHRH1	Chrome	300 lbs (136.1 kg)	Foam	29"-38"	E0100	Y	1 ea
New MDS86420BL	Blue	300 lbs (136.1 kg)	Foam	29"-38"	E0100	Y	6/cs
New MDS86420BLH1	Blue	300 lbs (136.1 kg)	Foam	29"-38"	E0100	Y	1 ea
MDS86420V6PKA	Variety	300 lbs (136.1 kg)	Foam	29"-38"	E0100	Y	6/cs



Gel Grip Offset Canes Tool-free Assembly

- Our cost-effective canes are mobility aids and fashion accessories
- Colorful options provide users with the right cane for different occasions
- Comfortable gel handles and convenient wrist straps

Item No.	Description	Wt. Cap.	Handle Material	Height Range	HCPCS	Retail Pkg.	Pkg.
MDS86440BLH	Blue	300 lbs (136.1 kg)	Gel	29"–38"	E0100	Y	1 ea
MDS86440PRH	Purple	300 lbs (136.1 kg)	Gel	29"–38"	E0100	Y	1 ea
MDS86440CHRH	Chrome	300 lbs (136.1 kg)	Gel	29"–38"	E0100	Y	1 ea
MDS86440BKH	Black	300 lbs (136.1 kg)	Gel	29"–38"	E0100	Y	1 ea



MDS86440BLH

Quad Canes Tool-free Assembly

- Provide a secure grip with four feet
- Allow greater weight distribution for stability than single-point canes

	Item No.	Description	Wt. Cap.	Handle Material	Height Range	HCPCS	Retail Pkg.	Pkg.
New	MDS86222WX4	Small Base, Black	300 lbs (136.1 kg)	Foam	29"–38"	E0105	Y	4/cs
	MDS86222W	Small Base, Black	300 lbs (136.1 kg)	Foam	29"–38"	E0105	Y	2/cs
	MDS86222H1	Small Base, Black	300 lbs (136.1 kg)	Foam	29"–38"	E0105	Y	1 ea
New	MDS86222CHRX4	Small Base, Chrome	300 lbs (136.1 kg)	Foam	29"–38"	E0105	Y	4/cs
	MDS86222CHR	Small Base, Chrome	300 lbs (136.1 kg)	Foam	29"–38"	E0105	Y	2/cs
	MDS86222CHRH	Small Base, Chrome	300 lbs (136.1 kg)	Foam	29"–38"	E0105	Y	1 ea
	G05345S	Small Base, Brite Chrome	300 lbs (136.1 kg)	Vinyl	29"–38"	E0105	Y	2/cs
New	MDS86222BRZX4	Small Base, Bronze	300 lbs (136.1 kg)	Foam	29"–38"	E0105	Y	4/cs
	MDS86222BRZ	Small Base, Bronze	300 lbs (136.1 kg)	Foam	29"–38"	E0105	Y	2/cs
	MDS86222BRZH	Small Base, Bronze	300 lbs (136.1 kg)	Foam	29"–38"	E0105	Y	1 ea
New	MDS86228X4	Large Base, Black	300 lbs (136.1 kg)	Foam	29"–38"	E0105	Y	4/cs
	MDS86228	Large Base, Black	300 lbs (136.1 kg)	Foam	29"–38"	E0105	Y	2/cs
	MDS86228H1	Large Base, Black	300 lbs (136.1 kg)	Foam	29"–38"	E0105	Y	1 ea
New	MDS86228CHRX4	Large Base, Chrome	300 lbs (136.1 kg)	Foam	29"–38"	E0105	Y	4/cs
	MDS86228CHR	Large Base, Chrome	300 lbs (136.1 kg)	Foam	29"–38"	E0105	Y	2/cs
New	MDS86228BRZX4	Large Base, Bronze	300 lbs (136.1 kg)	Foam	29"–38"	E0105	Y	4/cs
	MDS86228BRZ	Large Base, Bronze	300 lbs (136.1 kg)	Foam	29"–38"	E0105	Y	2/cs



MDS86222W

Folding Quad Canes **New** Tool-free Assembly

- Foldable for easy transport and storage
- Allows greater weight distribution for stability
- Four tips allow the cane to be self standing

Item No.	Description	Wt. Cap.	Handle Material	Height Range	HCPCS	Retail Pkg.	Pkg.
MDS86222F1	Small Base, Black	300 lbs (136.1 kg)	Foam	30"–39"	–	Y	1 ea
MDS86228F1	Large Base, Black	300 lbs (136.1 kg)	Foam	30"–39"	–	Y	1 ea



MDS86222F1

MDS86228F1

Bariatric Canes Tool-free Assembly

- All-steel construction
- Dual-tubing insert for added strength and security

Item No.	Description	Wt. Cap.	Handle Material	Height Range	HCPCS	Retail Pkg.	Pkg.
MDS86420XW	Offset Handle, Black	500 lbs (226.8 kg)	Vinyl	29"-38"	E0100	Y	1 ea
MDS86420XWCHR	Offset Single Point, Chrome	500 lbs (226.8 kg)	Vinyl	29"-38"	E0100	Y	1 ea
MDS86420XWTL	Offset Handle Cane, Tall, Black	500 lbs (226.8 kg)	Vinyl	37"-48"	E0100	Y	1 ea
MDS86222XW	Small Base Quad, Black	500 lbs (226.8 kg)	Vinyl	29"-38"	E0105	Y	1 ea
MDS86228XW	Large Base Quad, Black	500 lbs (226.8 kg)	Vinyl	29"-38"	E0105	Y	1 ea



MDS86228XW

Standard Aluminum Canes Tool-free Assembly

- Standard handle lets users hook the cane over their arm while opening doors or performing other tasks
- Foam grip provides a comfortable secure grip

Item No.	Description	Wt. Cap.	Handle Material	Height Range	HCPCS	Retail Pkg.	Pkg.
MDS86415	Black	300 lbs (136.1 kg)	Foam	30"-38"	E0100	Y	6/cs
MDS86415H1	Black	300 lbs (136.1 kg)	Foam	30"-38"	E0100	Y	1 ea
TAA86415	Black	300 lbs (136.1 kg)	Foam	30"-38"	-	Y	6/cs
MDS86415CHR	Chrome	300 lbs (136.1 kg)	Foam	30"-38"	E0100	Y	6/cs
MDS86415CHRH	Chrome	300 lbs (136.1 kg)	Foam	30"-38"	E0100	Y	1 ea



MDS86415CHR

Shepherd's Crook Handle Cane Tool-free Assembly

- Standard handle lets users hook the cane over their arm while opening doors or performing other tasks
- Vinyl handles create a comfortable grip while reinforced metal inserts at stress points provide greater strength and durability

Item No.	Description	Wt. Cap.	Handle Material	Height Range	HCPCS	Retail Pkg.	Pkg.
G05370	Chrome	300 lbs (136.1 kg)	Vinyl	31"-40"	E0100	Y	6/cs
G05370H	Chrome	300 lbs (136.1 kg)	Vinyl	31"-40"	E0100	Y	1 ea



G05370

Traditional Wooden Cane Tool-free Assembly

- Designed for patients who need additional assistance with balance
- Non-height adjustable

Item No.	Description	Wt. Cap.	Handle Material	Height Range	HCPCS	Retail Pkg.	Pkg.
MDS80212	Natural	300 lbs (136.1 kg)	Wood	7/8" x 36"	E0100	Y	6/cs



MDSWHTCANE

Cane for the Visually Impaired Tool-free Assembly

- Helps maintain an active lifestyle to get around safely
- Includes elastic strap

Item No.	Description	Wt. Cap.	Handle Material	Height Range	HCPCS	Retail Pkg.	Pkg.
MDSWHTCANE	White	-	Plastic	7/8"-42"	-	Y	1 ea

Folding T-Handle Canes Tool-free Assembly

- Folding capabilities make this cane perfect for travel
- Fits in a suitcase or carry-on luggage

Item No.	Description	Wt. Cap.	Handle Material	Height Range	HCPCS	Retail Pkg.	Pkg.
MDS86430W	Black	250 lbs (113.4 kg)	Vinyl	32"-36"	E0100	Y	6/cs
MDS86430WH1	Black	250 lbs (113.4 kg)	Vinyl	32"-36"	E0100	Y	1 ea
New MDS86430BH1	Blue	250 lbs (113.4 kg)	Vinyl	32"-36"	E0100	Y	1 ea



MDS86430W



MDS86430BH1

Folds down for easy transport and storage



Specialty Canes

Elevate style and support with our wide range of specialty canes.

TriGlide™ Folding Canes Tool-free Assembly

- Innovative pivoting base flexes to move with you, helping with balance and mobility on most surfaces
- Molded bevels on cane tip provide additional traction
- Ergonomic gel grip is at a slight angle to take pressure off the wrist, allowing for a more comfortable experience
- Folds four times to a compact 13" x 5" size and has a nylon loop with snap closures to secure the cane for effortless storage
- Six adjustable-height settings ranging from 32"-37", with a locking collar to secure the cane at the preferred height

Item No.	Description	Wt. Cap.	Handle Material	Height Range	HCPCS	Retail Pkg.	Pkg.
TGLCANE	Black	350 lbs (158.8 kg)	Gel	32"-37"	-	Y	1 ea
TGLCANE B	Blue	350 lbs (158.8 kg)	Gel	32"-37"	-	Y	1 ea



4U™ Canes Tool-free Assembly

- Four-point tip allows cane to be self-standing
- Gel grip for user comfort
- Folding capabilities make it perfect for travel

Item No.	Description	Wt. Cap.	Handle Material	Height Range	HCPCS	Retail Pkg.	Pkg.
4UCANE	Black	350 lbs (158.8 kg)	Gel	33"-37"	E0100	Y	1 ea
4UCANE B	Blue	350 lbs (158.8 kg)	Gel	33"-37"	E0100	Y	1 ea



Walking Cane/Hiking Stick New Tool-free Assembly

- Dual-angle adjustable handle for walking and hiking
- 90° handle for walking and 15° handle for hiking
- Ergonomic gel handle

Item No.	Description	Wt. Cap.	Handle Material	Height Range	HCPCS	Retail Pkg.	Pkg.
2ANGCANE	Iron Grey	250 lbs (113.4 kg)	Gel	33"-46", 36"-49"	-	Y	1 ea



Posture Promoting Cane New Tool-free Assembly

- Enhanced posture design changes the line of vision so user can look forward instead of down, which improves balance and movement
- Four-point tip allows cane to be self-standing
- Foldable for easy transport and storage

Item No.	Description	Wt. Cap.	Handle Material	Height Range	HCPCS	Retail Pkg.	Pkg.
POSTCANE	Black	250 lbs (113.4 kg)	Vinyl	40"-49"	-	Y	1 ea

Trigger Release Walking Cane New Tool-free Assembly

- Adjust height easily with a sliding trigger mechanism and lock it in place

Item No.	Description	Wt. Cap.	Handle Material	Height Range	HCPCS	Retail Pkg.	Pkg.
TRIGCANE	Black	250 lbs (113.4 kg)	Gel	26"-40.2"	-	Y	1 ea

LED Walking Cane New Tool-free Assembly

- Pivoting, rechargeable LED light on cane. Charge with USB cable.

Item No.	Description	Wt. Cap.	Handle Material	Height Range	HCPCS	Retail Pkg.	Pkg.
LEDCANE	Black	250 lbs (113.4 kg)	Vinyl	33"-39"	-	Y	1 ea

Cane Accessories

Item No.	Description	Retail Pkg.	Pkg.
MDS86425W	Large Base Quad Cane Rubber Tips	Y	6/cs
MDS86425W4H	Large Base Quad Cane Rubber Tips	Y	4/bg
MDS86426W4	Replacement Tips for Standard Cane, Black, 3/4"	Y	4/cs
MDS86426W	Standard Cane Tips	Y	6/cs
MDS86426WH	Standard Cane Tips	Y	1pr
4PTCANETIP	4-point Cane Tips	Y	4/cs
MDS86424W	Small Base Quad Cane Rubber Tips	Y	6/cs
MDS86424W4H	Small Base Quad Cane Rubber Tips	Y	4/bg
MDS86427W	Cane Grip for Offset Handle Canes	Y	12/cs



POSTCANE



TRIGCANE



LEDCANE



MDS86425W



4PTCANETIP

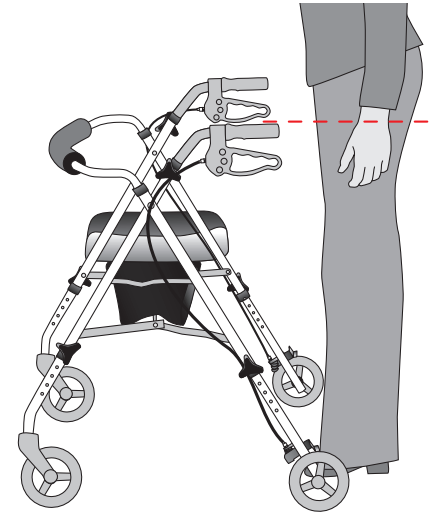
Rollators

For the customer looking for more, versatility meets personality with this superior group of rollators. From essential basics to premier collections, Medline takes your customers' needs and lifestyle into consideration. Engineered with design features that solve specific problems for the user in unique colors and additional accessories. Discover both functional and luxury in a product category that historically only focused on utility.

Rollators are a mobility aid with a seat to rest on when tired. Most rollators allow handle adjustment for a proper fit and comfort.

To accurately size the rollator handle height keep arms at your side with a natural bend at the elbow. Align your wrist to the handle as shown in the image.

Follow your rollator's manual on how to adjust the handle as rollator handle height adjustment mechanisms differ from one rollator to another.



Basic Steel Rollators Tool-free Assembly

- Durable powder-coated steel frame
- Storage bag under the seat is included
- Folds for easy storage/transport

Item No.	Description	Wheel Size	Wt. Cap.	Seat Height	Height Range	Hand Grip Width	HCPCS	Retail Pkg.	Pkg.
MDS86830EBLS	Black	6"	300 lbs (136.1 kg)	20.5"	31"-35"	17.5"	E0143 + E0156	N	1 ea
MDS86850EBS	Blue	6"	350 lbs (158.8 kg)	20.5"	31"-35"	17.5"	E0143 + E0156	N	1 ea
MDS86850ESKD	Burgundy	6"	350 lbs (158.8 kg)	20.5"	31"-35"	17"	E0143 + E0156	Y	1 ea
RLKD-150S-6B*	Blue	6"	350 lbs (136.1 kg)	20.5"	31"-37"	17"	E0143 + E0156	N	1 ea
MDS86850ES	Burgundy	6"	350 lbs (158.8 kg)	20.5"	31"-35"	17.5"	E0143 + E0156	N	1 ea
MDS86850EGS	Green	6"	350 lbs (158.8 kg)	20.5"	31"-35"	17.5"	E0143 + E0156	N	1 ea
New RLL-400S-6GR	Gray	6"	350 lbs (158.8 kg)	20.5"	31"-35"	17.5"	E0143 + E0156	N	1 ea
MDS86840EBS**	Light Blue	6"	300 lbs (136.1 kg)	20.5"	31"-35"	17.5"	E0143 + E0156	N	1 ea
MDS86830EBLS8	Black	8"	300 lbs (136.1 kg)	21.5"	31"-36"	17.5"	E0143 + E0156	N	1 ea
MDS86850EGS8	Green	8"	350 lbs (158.8 kg)	21.5"	31"-36"	17.5"	E0143 + E0156	N	1 ea
MDS86850ES8	Burgundy	8"	350 lbs (158.8 kg)	21.5"	31"-36"	17.5"	E0143 + E0156	N	1 ea
MDS86850EBS8	Blue	8"	350 lbs (158.8 kg)	21.5"	31"-36"	17.5"	E0143 + E0156	N	1 ea
MDS86840EBS8**	Light Blue	8"	300 lbs (136.1 kg)	21.5"	31"-36"	17.5"	E0143 + E0156	N	1 ea

*Knockdown rollators

**Backrest flips up

Basic Steel Rollators with 8" Wheels and Basket Tool-free Assembly

- Easily removable wire basket
- Flip up backrest for easy storage

Item No.	Description	Wt. Cap.	Seat Height	Wheel Size	Height Range	Hand Grip Width	HCPCS	Retail Pkg.	Pkg.
MDS86860ERS8	Red	300 lbs (136.1 kg)	21.25"	8"	31"-35"	18.5"	E0143 + E0156	N	1 ea
MDS86860EBS8	Blue	300 lbs (136.1 kg)	21.25"	8"	31"-35"	18.5"	E0143 + E0156	N	1 ea

Basic Steel Rollators with Microban* Tool-free Assembly

- Microban* protection on handles and seats to protect the product

Item No.	Description	Wt. Cap.	Seat Height	Wheel Size	Height Range	Hand Grip Width	HCPCS	Retail Pkg.	Pkg.
MDS86850ESAB**	Teal	300 lbs (136.1 kg)	20"	6"	30.25"-34.5"	17.5"	-	N	1 ea
MDS86850ESAR**	Burgundy	300 lbs (136.1 kg)	20"	6"	30.25"-34.5"	17.5"	-	N	1 ea
MDS868SKWM**	White with Striped Bag	300 lbs (136.1 kg)	22"	8"	31.5"-35.5"	17.5"	-	N	1 ea
MDS868SKNM**	Navy with Plaid Bag	300 lbs (136.1 kg)	22"	8"	31.5"-35.5"	17.5"	-	N	1 ea

*Antimicrobial properties are built in to protect the product. This product does not protect users or others against bacteria, viruses, germs or other disease organisms.

**Knockdown rollators

Rollator Bags

- Durable nylon bag measures 12" x 11.5" and keeps essentials safe and close at hand
- Bag has 1 large pocket, 1 mesh pocket with zipper and 3 small pockets for phones, glasses or wallets
- 4 adjustment straps with hook & loop closures for easy attachment to standard rollators and walkers
- Front tote removes and reattaches easily to carry it with you
- Lightweight

Item No.	Description	Retail Pkg.	Pkg.
MDS86835SPT	Teal	N	1 ea
MDS86835SPR	Burgundy	N	1 ea
MDS86835SPG	Gray	N	1 ea
MDS86850BAG	Black	N	1 ea



Fits on all basic rollators



Fits on all basic rollators

MDS86835SPT
(Rollator sold separately)

MDS86850BAG

Basic Aluminum Rollators Tool-free Assembly

- Lightweight durable aluminum frame
- Storage bag under the seat is included
- Folds for easy storage/transport

Item No.	Description	Wt. Cap.	Seat Height	Wheel Size	Height Range	Hand Grip Width	HCPCS	Retail Pkg.	Pkg.
MDS86850EB	Blue	250 lbs (113.4 kg)	20.5"	6"	31"-35"	17.5"	E0143 + E0156	N	1 ea
MDS86850E	Burgundy	250 lbs (113.4 kg)	20.5"	6"	31"-35"	17.5"	E0143 + E0156	N	1 ea
MDS86850EP	Purple	250 lbs (113.4 kg)	20.5"	6"	31"-35"	17.5"	E0143 + E0156	N	1 ea
MDS86850EG	Green	250 lbs (113.4 kg)	20.5"	6"	31"-35"	17.5"	E0143 + E0156	N	1 ea
MDS86830EBL	Black	300 lbs (136.1 kg)	20.5"	6"	31"-35"	17.5"	E0143 + E0156	N	1 ea
MDS86830EBL8	Black	300 lbs (136.1 kg)	21.5"	8"	31.5"-37.5"	17.5"	E0143 + E0156	N	1 ea
RLL-230A-8BG	Burgundy	300 lbs (136.1 kg)	21.5"	8"	31.5"-37.5"	17.5"	E0143 + E0156	N	1 ea
RLL-230A-8B	Blue	300 lbs (136.1 kg)	21.5"	8"	31.5"-37.5"	17.5"	E0143 + E0156	N	1 ea



MDS86840EBS



MDS86850ES8



MDS86850EP



MDS86850ESAB

With Microban*

Tall Rollator New ✕ Tool-free Assembly

- Durable steel frame
- Height adjustable in seven 1-inch increments from 37"–43"

Item No.	Description	Wt. Cap.	Seat Height	Height Range	Hand Grip Width	HCPCS	Retail Pkg.	Pkg.
RLL-100S-8BT	Blue, 8" Wheels	300 lbs (136.1 kg)	24"	37"–43"	17"	E0143 + E0156	N	1 ea

Basic Jr. Rollators with 6" Wheels ✕ Tool-free Assembly

- Easy-to-use loop-style brakes; push down to lock, pull up to release
- Padded backrest and seat for comfortable resting
- Height-adjustable arms for a custom fit
- Folding design for compact storage

Item No.	Description	Wt. Cap.	Seat Height	Height Range	Hand Grip Width	HCPCS	Retail Pkg.	Pkg.
MDS86850EJR	Burgundy	250 lbs (113.4 kg)	20.5"	29"–33"	17.5"	E0143 + E0156	N	1 ea
MDS86850EBJR	Blue	250 lbs (113.4 kg)	20.5"	29"–33"	17.5"	E0143 + E0156	N	1 ea

Superlight Rollators with 6" Wheels ✕ Tool-free Assembly

- Lightweight aluminum frame
- Weighs 12.6 lbs making it easy to transport
- Seat and handle height adjustable

Item No.	Description	Wt. Cap.	Seat Height	Height Range	Hand Grip Width	HCPCS	Retail Pkg.	Pkg.
MDS86825SLR*	Red	250 lbs (113.4 kg)	18"–23"	29.5"–36"	17"	E0143 + E0156	Y	1 ea
MDS86825SLBLK*	Black	250 lbs (113.4 kg)	18"–23"	29.5"–36"	17"	E0143 + E0156	Y	1 ea
MDS86825SLB*	Smoky Blue	250 lbs (113.4 kg)	18"–23"	29.5"–36"	17"	E0143 + E0156	Y	1 ea

*Knockdown rollators

Ajustable Seat Height Steel Rollator with 6" Wheels ✕ Tool-free Assembly

- Durable steel frame
- Foldable for easy transport or store when not in use
- Seat and handle height adjustable

Item No.	Description	Wt. Cap.	Seat Height	Height Range	Hand Grip Width	HCPCS	Retail Pkg.	Pkg.
MDS86825SLRS	Red	350 lbs (158.8 kg)	18"–23"	29.5"–36"	17"	E0143 + E0156	N	1 ea



MDS86850EJR



MDS86825SLB

Superlight
options
weigh only
12.6 lbs

Luxe Wide Rollator with 7" Wheels Tool-free Assembly

- Lightweight aluminum frame
- Includes a nylon carry-all bag and a cup holder
- Height adjustable handle and seat

Item No.	Description	Wt. Cap.	Seat Height	Height Range	Hand Grip Width	HCPCS	Retail Pkg.	Pkg.
MDS86835W	White	300 lbs (136.1 kg)	19.5"-24"	29"-33"	19"	E0143 + E0156	N	1 ea

Two-wheel Rollator with 5" Wheels Tool-free Assembly

- Durable powder-coated steel frame
- Folds for easy storage/transport
- Spring-loaded rear brake tips

Item No.	Description	Wt. Cap.	Seat Height	Height Range	Hand Grip Width	HCPCS	Retail Pkg.	Pkg.
RLT-600S-5BG	Burgundy	300 lbs (136.1 kg)	20"	31"-38"	18.5"	E0143 + E0156	N	1 ea

Bariatric Rollators with 8" Wheels Tool-free Assembly

- Heavy-duty bariatric rollators
- Wider distance between handles for users needing extra room

Item No.	Description	Wt. Cap.	Seat Height	Height Range	Hand Grip Width	HCPCS	Retail Pkg.	Pkg.
MDS86800XWS	Steel, Burgundy	500 lbs (226.8 kg)	22"	31.5"-37.5"	23.5"	E0149 + E0156	N	1 ea
New MDS86800XWBS	Steel, Blue	500 lbs (226.8 kg)	22"	31.5"-37.5"	23.5"	E0149 + E0156	N	1 ea
MDS86800XW	Aluminum, Burgundy	400 lbs (181.4 kg)	22"	31.5"-37.5"	23.5"	E0149 + E0156	N	1 ea

Premium Bariatric Rollator with 8" Wheels Tool-free Assembly

- Premium wheels for added maneuverability
- Padded backrest and padded seat offer users ability to rest

Item No.	Description	Wt. Cap.	Seat Height	Height Range	Hand Grip Width	HCPCS	Retail Pkg.	Pkg.
MDS868XWR	Steel, Burgundy	500 lbs (226.8 kg)	22"	31.5"-37.25"	23.5"	E0149 + E0156	N	1 ea



MDS86835W



RLT-600S-5BG



MDS868XWR

Posh Pink Zebra Rollator 6" Wheels Tool-free Assembly

- Stylish and brightly colored pink frame with 2 water-resistant zebra-print storage bags
- Reinforced aluminum frame is strong and easy to maneuver
- Complete with a cosmetic mirror and convenient strap for folding
- Weighs only 14.75 lbs (6.6 kg)

Item No.	Description	Wt. Cap.	Seat Height	Height Range	Hand Grip Width	HCPCS	Retail Pkg.	Pkg.
MDS86835SHE	Posh Pink	250 lbs (113.4 kg)	19.5"–23.5"	30"–36"	17"	–	Y	1 ea

Medline Deluxe Rollator with 8" Wheels Tool-free Assembly

- Aluminum frame
- Padded seat and curved padded backrest provide enhanced support and comfort

Item No.	Description	Wt. Cap.	Seat Height	Height Range	Hand Grip Width	HCPCS	Retail Pkg.	Pkg.
G07887B	Blue	300 lbs (136.1 kg)	20"	31"–36.5"	17.5"	E0143 + E0156	N	1 ea

Empower Rollators with 8" Wheels Tool-free Assembly

- Aluminum frame with memory foam seat
- Padded backrest flips forward and backward enabling the user to sit comfortably on either side
- Seat flips up to enable user to walk inside

Item No.	Description	Wt. Cap.	Seat Height	Height Range	Hand Grip Width	HCPCS	Retail Pkg.	Pkg.
MDS86845BM	Blue	300 lbs (136.1 kg)	21"–25"	31.5"–39"	18"	–	Y	1 ea
MDS86845BLKM	Black	300 lbs (136.1 kg)	21"–25"	31.5"–39"	18"	–	Y	1 ea
MDS86845SM	Silver	300 lbs (136.1 kg)	21"–25"	31.5"–39"	18"	–	Y	1 ea
MDS86845W	White with Microban*	300 lbs (136.1 kg)	21"–25"	31.5"–39"	18"	–	N	1 ea
MDS86845RD	Red with Microban*	300 lbs (136.1 kg)	21"–25"	31.5"–39"	18"	–	N	1 ea

*Antimicrobial properties are built-in to protect the product. This product does not protect users or others against bacteria, viruses, germs or other disease organisms.



MDS86835SHE



G07887B



MDS86845BM

3-wheel Rollators Tool-free Assembly

- Easy to maneuver with a tray, basket and storage bag

Item No.	Description	Wt. Cap.	Seat Height	Height Range	Hand Grip Width	HCPCS	Retail Pkg.	Pkg.
MDS86840TRIB	Blue, 8" Wheels	275 lbs (124.7 kg)	20.5"	31.75"-35.5"	14.5"	E0143	N	1 ea
MDS86840TRIR	Red, 8" Wheels	275 lbs (124.7 kg)	20.5"	31.75"-35.5"	14.5"	E0143	N	1 ea

Upright Rollator Tool-free Assembly

- Easy maneuverability and helps to promote good posture

Item No.	Description	Wt. Cap.	Seat Height	Height Range	Hand Grip Width	HCPCS	Retail Pkg.	Pkg.
RLU-500A-8RW	White	300 lbs (136.1 kg)	21.5"	41"-46"	14.5"	-	Y	1 ea

European-style Rollators Tool-free Assembly

- Feature a lightweight aluminum frame
- Fold horizontally for easy storage
- Storage bag included

Item No.	Description	Wt. Cap.	Seat Height	Height Range	Color	HCPCS	Retail Pkg.	Pkg.
MDS86880R	Euro-Style	300 lbs (136.1 kg)	21"	33"-38"	Red	-	N	1 ea
MDS868TA95R	TA-95	300 lbs (136.1 kg)	20"	33"-38"	Red	-	N	1 ea

TAA Accessory

Item No.	Description	Color	HCPCS	Retail Pkg.	Pkg.
New RLO2-HLDRTAA	Oxygen Tank Holder for TAA Rollator, 6 lbs	Black	-	N	1 ea



MDS86840TRIB



RLU-500A-8RW



MDS86880R

Medline Paradym™ Rollators Tool-free Assembly

- Knockdown European-style
- Fold horizontally for easy storage
- Storage bag included

Item No.	Description	Wt. Cap.	Seat Height	Height Range	Hand Grip Width	HPCPS	Retail Pkg.	Pkg.
MDS86870ANB	Navy Blue	300 lbs (136.1 kg)	21"	34"–38"	18.5"	–	N	1 ea
RLL-75A-8BR	Navy Blue	300 lbs (136.1 kg)	21"	34"–38"	18.5"	–	Y	1 ea
RLL-75A-8WR	White	300 lbs (136.1 kg)	21"	34"–38"	18.5"	–	Y	1 ea
RLL-75A-8RR	Red	300 lbs (136.1 kg)	21"	34"–38"	18.5"	–	Y	1 ea



byACRE Overland All-Terrain Carbon Fiber Rollator Tool-free Assembly

- Durable pneumatic tires and superb suspension
- Weighs 14.78 lbs
- Carbon fiber frame is 5x stronger than steel
- Ergonomic handles have integrated brake lines and are height adjustable in 1" increments
- Includes an organizer bag



Item No.	Description	Wt. Cap.	Seat Height	Height Range	Seat Width	HPCPS	Retail Pkg.	Pkg.
BYA1500G	Defender Green	330 lbs (149.7 kg)	24"	32.3"–37.4"	18.5"	–	N	1 ea

byACRE Ultralight Carbon Fiber Rollators Tool-free Assembly

- World's lightest rollators at 10.6 lbs
- Carbon fiber frame is 5x stronger than steel
- Ergonomic handles have integrated brake lines and are height adjustable in 1" increments
- Include an organizer bag

Compact

Item No.	Description	Wt. Cap.	Seat Height	Height Range	Seat Width	HCPCS	Retail Pkg.	Pkg.
BYA100SMW	White	285 lbs (129.3 kg)	22"	31"-36"	16"	-	N	1 ea

Regular

Item No.	Description	Wt. Cap.	Seat Height	Height Range	Seat Width	HCPCS	Retail Pkg.	Pkg.
BYA100MDBK	Black	285 lbs (129.3 kg)	24"	31.5"-37.4"	16.5"	-	N	1 ea
BYA100MDR	Red	285 lbs (129.3 kg)	24"	31.5"-37.4"	16.5"	-	N	1 ea
BYA100MDW	White	285 lbs (129.3 kg)	24"	31.5"-37.4"	16.5"	-	N	1 ea
New BYA100MDP	Pink	285 lbs (129.3 kg)	24"	31.5"-37.4"	16.5"	-	N	1 ea
New BYA100MDG	Gold	285 lbs (129.3 kg)	24"	31.5"-37.4"	16.5"	-	N	1 ea
New BYA100MDBL	Blue	285 lbs (129.3 kg)	24"	31.5"-37.4"	16.5"	-	N	1 ea
BYA110MDB*	Blue	285 lbs (129.3 kg)	24"	31.5"-37.4"	16.5"	-	N	1 ea

*Backrest included

Comfort

Item No.	Description	Wt. Cap.	Seat Height	Height Range	Seat Width	HCPCS	Retail Pkg.	Pkg.
BYA100LGBK	Black	285 lbs (129.3 kg)	24"	31.5"-37.4"	18.5"	-	N	1 ea
BYA100LGR	Red	285 lbs (129.3 kg)	24"	31.5"-37.4"	18.5"	-	N	1 ea
BYA100LGW	White	285 lbs (129.3 kg)	24"	31.5"-37.4"	18.5"	-	N	1 ea

byACRE Ultralight carbon fiber rollator accessories

Item No.	Description	Retail Pkg.	Pkg.
BYAGRBG	Grocery Bag, Gray	N	1 ea
BYAWKNBG	Weekend Bag, Gray	N	1 ea
BYATVLBG	Travel Bag, Gray	N	1 ea
BYACNHR	Cane Holder, Right	N	1 ea
BYAOBGR	Organizer Bag, Small/Medium, Gray	N	1 ea
BYAOBGL	Organizer Bag, Large, Gray	N	1 ea
BYASMBR	Backrest, Small/Medium	N	1 ea
BYALBR	Backrest, Large	N	1 ea

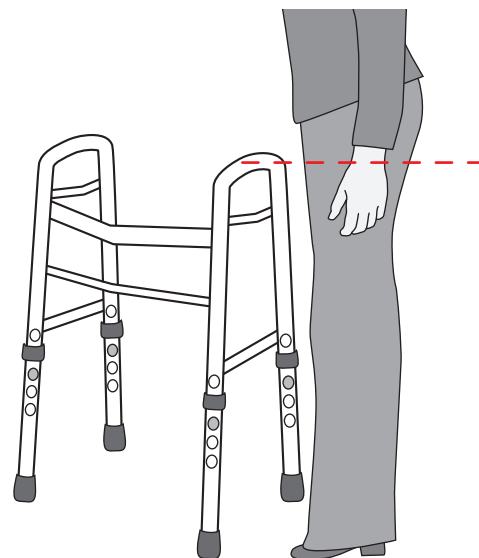


Walkers

Performance and style are found in our superior group of walkers, engineered with design features that help aid with specific mobility issues.

Proper walker sizing can help prevent poor posture and injury from misuse or falling. Medline walkers use push-button mechanisms, so they can be adjusted to various heights.

1. Select a walker that's appropriate to the weight of the patient.
2. Keeping arms at your side with a natural bend at the elbow, measure from the ground to the center of the wrist.
3. Adjust all four legs to the same height so that the handgrips match the same height as the wrist.



Hemi Walkers Tool-free Assembly

- Lightweight design allows the hemi sidestepper to be maneuvered easily—even with one arm
- Bi-level hand grip offers extra assistance

Item No.	Description	Wt. Cap.	Handle Material	Height Range	Hand Grip Width	HCPCS	Retail Pkg.	Pkg.
G07770X1	Adult Hemi Walker	250 lbs (113.4 kg)	PVC	32"–36"	N/A	E0135	N	1 ea
G07770XW	Bariatric Adult Hemi Walker	500 lbs (226.8 kg)	PVC	32"–36"	N/A	E0148	N	1 ea
G07771	Youth Hemi Walker	250 lbs (113.4 kg)	PVC	28.5"–32"	N/A	E0135	N	2/cs

Two-button Folding Walkers Tool-free Assembly

- Durable walker with two-button folding system
- Push-button, height-adjustable legs

Item No.	Description	Wt. Cap.	Handle Material	Height Range	Hand Grip Width	HCPCS	Retail Pkg.	Pkg.
MDS864104	Aluminum, No Wheels	300 lbs (136.1 kg)	PVC	32"–39"	18"	E0135	N	4/cs
MDS864104B	Steel, No Wheels	400 lbs (181.4 kg)	PVC	32"–39"	18"	E0135	N	4/cs
MDS86410W4	Aluminum, 3" Wheels	300 lbs (136.1 kg)	PVC	32"–38"	17.5"	E0143	N	4/cs
MDS86410W54	Aluminum, 5" Wheels	300 lbs (136.1 kg)	PVC	32"–38"	17.5"	E0143	N	4/cs
MDS86410W54B	Steel, 5" Wheels	400 lbs (181.4 kg)	PVC	32.5"–39.5"	17.5"	E0143 or E0149	N	4/cs



G07770X1



MDS864104



MDS86410W54B

Youth Two-Button Folding Walkers Tool-free Assembly

- Youth size durable walker with two-button folding system
- Comfortable grip with mark-resistant tips

Item No.	Description	Wt. Cap.	Handle Material	Height Range	Hand Grip Width	HCPCS	Retail Pkg.	Pkg.
MDS86410J4	Aluminum, No Wheels	300 lbs (136.1 kg)	PVC	25"–32"	17.5"	E0135	N	4/cs
MDS86410J4B	Steel, No Wheels	400 lbs (181.4 kg)	PVC	25"–32"	17.5"	–	N	4/cs
MDS86410JW54	Aluminum, 5" Wheels	300 lbs (136.1 kg)	PVC	25"–32"	17.5"	E0143	N	4/cs
MDS86410JW54B	Steel, 5" Wheels	400 lbs (181.4 kg)	PVC	25"–32"	17.5"	E0149	N	4/cs

Bariatric Folding Walkers Tool-free Assembly

- Extra-wide frames and higher weight capacities provide a comfortable fit for larger patients
- Includes two-button folding system

Item No.	Description	Wt. Cap.	Handle Material	Height Range	Hand Grip Width	HCPCS	Retail Pkg.	Pkg.
MDS86410XW	Aluminum, No Wheels	500 lbs (226.8 kg)	PVC	31"–41"	20.5"	E0148	N	1 ea
MDS86410XWB	Steel, No Wheels	650 lbs (294.8 kg)	PVC	31"–41"	20"	–	N	1 ea
MDS86410XWW	Aluminum, 5" Wheels	500 lbs (226.8 kg)	PVC	33.5"–43.25"	20.5"	E0149	N	1 ea
MDS86410XWWB	Steel, 5" Wheels	600 lbs (272.2 kg)	PVC	31"–41"	20"	E0149	N	1 ea

Folding Paddle Walkers Tool-free Assembly

- Ideal design for patients with manual dexterity limitations
- The paddle mechanism can be flipped-up or pushed-down to fold the walker

Item No.	Description	Wt. Cap.	Handle Material	Height Range	Hand Grip Width	HCPCS	Retail Pkg.	Pkg.
MDS86410P	Aluminum, No Wheels	300 lbs (136.1 kg)	PVC	32"–39"	16.5"	E0135	N	4/cs
MDS86410P5	Aluminum, 5" Wheels	300 lbs (136.1 kg)	PVC	32"–39"	16.5"	E0143	N	4/cs
MDS86410P5J	Junior, 5" Wheels	300 lbs (136.1 kg)	PVC	25.5"–32.5"	16.5"	E0143	N	4/cs
MDS86410KDBW	Blue, Aluminum, 5" Wheels	350 lbs (158.8 kg)	PVC	32.5"–39.5"	16.75"	E0149	Y	1 ea
MDS86410P5H1	Aluminum, 5" Wheels	300 lbs (136.1 kg)	PVC	32.5"–39.5"	16.5"	E0142	N	1 ea



MDS86410JW54



MDS86410XWW



MDS86410KDBW

Upright Folding Walkers Tool-free Assembly

- Help users with posture compared to standard walkers
- Comfortable grip with mark-resistant tips

Item No.	Description	Wt. Cap.	Handle Material	Height Range	Hand Grip Width	HCPCS	Retail Pkg.	Pkg.
MDSUPWALK	Aluminum, 5" Wheels	300 lbs (136.1 kg)	PVC	46"–53"	20"	–	N	1 ea
MDSUPWALKJR	Aluminum, Youth, 5" Wheels	300 lbs (136.1 kg)	Cushion	35.5"–42.5"	18"	–	N	1 ea

Folding Trigger Walker Tool-free Assembly

- Trigger mechanism can be pulled up to fold the walker
- Wheeled glide brakes help user brake easily
- Includes a bag for easy storage when travelling
- Two storage pouches included

Item No.	Description	Wt. Cap.	Handle Material	Height Range	Hand Grip Width	HCPCS	Retail Pkg.	Pkg.
MDS86410TRIG	Aluminum, 5" Wheels	300 lbs (136.1 kg)	PVC	29.5"–37"	17"	–	N	1 ea



Medline Walkers

- All walkers come fully assembled
- Easy-fold sides for easy movement through narrow spaces
- Comfortable grip and mark-resistant tips

Item No.	Description	Wt. Cap.	Handle Material	Height Range	Hand Grip Width	HCPCS	Retail Pkg.	Pkg.
G30757W	Aluminum, 5" Wheels, Adult	300 lbs (136.1 kg)	PVC	32.5"-39.5"	16.5"	E0143	N	4/cs
G30758W	Aluminum, 5" Wheels, Youth	300 lbs (136.1 kg)	PVC	27.25"-34.25"	16.5"	E0143	N	4/cs
G30754B	Bariatric, Steel, No Wheels, Adult	650 lbs (294.8 kg)	PVC	32"-39"	22"	E0148	N	2/cs
G30755P	Aluminum, No Wheels, Adult	300 lbs (136.1 kg)	PVC	32.5"-39.5"	16.5"	E0135	N	4/cs
G30756P	Aluminum, No Wheels, Youth	300 lbs (136.1 kg)	PVC	27"-34"	16.5"	E0135	N	4/cs
G07783M	Aluminum, 5" Wheels, Pediatric, Tweener	175 lbs (79.4 kg)	PVC	24"-36"	9.5"	E0135	N	1 ea
G07749	Aluminum, No Wheels, Pediatric, Child	200 lbs (90.7 kg)	PVC	24.5"-28.5"	12.75"	E0135	N	1 ea
G07750	Aluminum, No Wheels, Pediatric, Toddler	175 lbs (79.4 kg)	PVC	20.5"-24.5"	10.75"	E0135	N	1 ea
G07767	Aluminum, No Wheels, Heavy Duty, Adult	400 lbs (181.4 kg)	PVC	32.5"-39.5"	19"	E0148	N	1 ea



G30754B



G30755P



G07749

Walker Accessories

Item No.	Description	Retail Pkg.	Pkg.
G07729M	Pediatric 7/8" Footpiece, 3" Wheels and Glide Caps	Y	1 pr
G07731-8	1" Footpiece, 3" Wheels and Glide Caps	Y	3 pr/cs
G07731G	Footpiece, 3" Wheels	Y	1 pr
G07722-8	Guardian, 5" Front Walker Wheels	Y	1 pr
MDS86615W	3" Casters	Y	1 pr
MDS86615W5	5" Wheels and Glide Caps	Y	1 pr
MDS86615W5W	Footpiece, 5" Wheels and Glide Caps	Y	6 pr/cs
G07724	Pediatric Extension Leg, 5" Wheels	Y	2 pr/cs
G07725	Walker Footpiece Extension Kit, 5" Wheels	Y	1 kit
G07825-8	Swivel Footpiece, 3" Wheels	Y	1 pr
G07722-8B	Fixed 5" Bariatric Dual Wheels	Y	1 pr
G07722G	Fixed 5" Bariatric Dual Wheels	Y	3 pr/cs
G07723M	Footpiece, 5" Wheels	Y	1 pr
G07820-8M	3" Walker Swivel Wheels	Y	1 pr
MDS86615SW5	Footpiece, 5" Wheels	Y	2 pr/cs
G07732G	Glide Brake	Y	3 pr/cs
MDS86615T	Rubber Tip	Y	1 pr
G07904	Glide Cap	Y	6/cs
G07900CS	Glide Cap	Y	24/cs
MDS86615C	1" Glide Cap for Walkers	Y	1 pr
MDS86615CW	1" Glide Cap for Walkers	Y	6/cs
MDS86615SKI	Ski Glider for Walkers	Y	6/cs
G07712	4-Piece Footpiece Extension	Y	2 pr/pk
MDS86615L	10" Leg Replacement	Y	1 pr
G07850M	Flip Tray for Walkers	Y	3/cs
G07850MB	Bariatric Walker Flip Tray	Y	3/cs
G07702	Walker Platform Attachment for Medline Walkers	Y	1 ea
G07703M	Walker Platform Attachment Youth	Y	1 ea
MDS86615P	Platform Attachment for MDS Aluminum Walkers	Y	1 ea
G07741	Walker Front Carry Pouch	Y	3/cs
G07715	Carrying Basket	Y	2/cs
G07872	Walker Seat	Y	2/cs
MDS86615K	Walker Basket	Y	2/cs
MDS86615PB	Platform Attachment for Basic Walkers	Y	1 ea
MDSWBALL	Walker Ball Glide	Y	6 pr/cs
MDS86615BAG	2-Button Walker Bag	Y	4/cs
MDSRUBSKI	Walker Glide	Y	6/cs
MDS86615W5T	5" Walker Wheels and Glide Caps	Y	1 pr
MDSUCPCANEHW	Combo Cup and Cane Holder	Y	6/cs



Walker Accessories Comparison Chart

● Fits ■ Does not fit

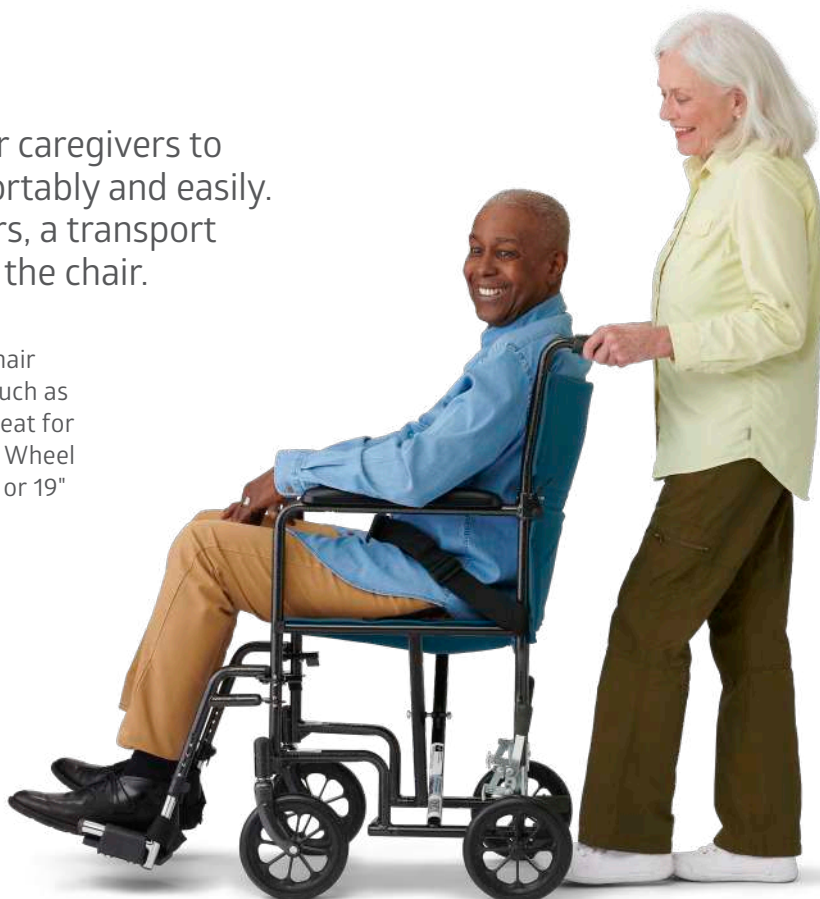
	Single	Paddle	Non-Standard	Basic	Easy-Care	2-Button	Single	Bariatric
	MDS86617	MDS86410P MDS86410P5 MDS86410P5J	G07767 MDS86204	MDS86410JW54B MDS86410W54B MDS864104B MDS86410J4B	G30755P G30757W G30756P G30758W	MDS864104 MDS86410W54 MDS86410J4 MDS86410JW54 MDS86410W4 MDS86410JW4	MDS86615	G30754B MDS86410XWB MDS86410XWWW MDS86410XWWW MDS86410XW
G07731-8 3" Walker Wheels, 8-Hole, 1 pr	●	● ● ● ●	■ ■	● ● ● ●	● ● ● ●	● ● ● ● ● ● ● ●	●	■ ● ● ● ● ■
G07731G 3" Walker Wheels, 3/cs	●	● ● ● ●	■ ■	● ● ● ●	● ● ● ●	● ● ● ● ● ● ● ●	●	■ ● ● ● ● ■
MDS86615W 3" Walker Wheels with Glidecaps, 2/set	●	● ● ● ●	■ ■	● ● ● ●	● ● ● ●	● ● ● ● ● ● ● ●	●	■ ● ● ● ● ■
G07722-8 5" Walker Wheels, 8-Holes, 1 pr	●	● ● ● ●	■ ■	● ● ● ●	● ● ● ●	● ● ● ● ● ● ● ●	●	■ ● ● ● ● ■
G07722G 5" Wheels for Walker, 3/cs	●	● ● ● ●	■ ■	● ● ● ●	● ● ● ●	● ● ● ● ● ● ● ●	●	■ ● ● ● ● ■
MDS86615W5 5" Walker Wheels, 2/set	●	● ● ● ●	■ ■	● ● ● ●	● ● ● ●	● ● ● ● ● ● ● ●	●	■ ● ● ● ● ■
MDS86615W5T 5" Walker Wheels, 2/set	●	● ● ● ●	■ ■	● ● ● ●	■ ■ ■ ■	■ ■ ■ ■ ■ ■ ■ ■	■	■ ● ● ● ● ■
G07725 5" Walker Wheels, 1 kt	●	● ● ● ●	■ ■	● ● ● ●	■ ● ● ●	● ● ● ● ● ● ● ●	●	■ ● ● ● ● ■
G07722-8B 5" Dual Wheels, Bariatric, 1 pr	●	● ● ● ●	■ ■	● ● ● ●	■ ■ ■ ■	■ ■ ■ ■ ■ ■ ■ ■	■	● ● ● ● ●
G07825-8 3" Walker Wheels, Swivel, 1 pr	●	● ● ● ●	■ ■	● ● ● ●	● ● ● ●	● ● ● ● ● ● ● ●	●	■ ● ● ● ● ■
G07811 5" Walker Wheels, 1 pr	●	● ● ● ●	■ ■	● ● ● ●	■ ■ ● ●	■ ■ ● ● ■ ■ ■ ■	■	■ ● ■ ● ● ■
MDS86615SW5 5" Walker Swivel Wheels, 2/set	●	● ● ● ●	■ ■	● ● ● ●	■ ■ ● ●	■ ■ ● ● ■ ■ ■ ■	■	■ ● ● ● ● ■
G07732G Brake Footpiece Set, 3/cs	●	● ● ● ●	■ ■	● ● ● ●	● ● ● ●	● ● ● ● ● ● ● ●	●	■ ● ● ● ● ■
G07900CS Glide Cap, 24/cs	●	● ● ● ●	● ●	● ● ● ●	● ● ● ●	● ● ● ● ● ● ● ●	●	● ● ● ■ ● ●
G07904 Glide Cap, 6/cs	●	● ● ● ●	● ●	● ● ● ●	● ● ● ●	● ● ● ● ● ● ● ●	●	● ● ● ■ ● ●
G07712 Extension Footpiece, 1/pk	●	● ● ● ●	■ ■	● ● ● ●	● ● ● ●	● ● ● ● ● ● ● ●	●	■ ● ■ ● ● ■
MDS86615L Walker Leg Replacement, 2/set	●	● ● ● ●	● ●	● ● ● ●	● ● ● ●	● ● ● ● ● ● ● ●	●	■ ● ■ ● ● ■
G07741 Walker Pouch, 3/cs	●	● ● ● ●	● ●	● ● ● ●	● ● ● ●	● ● ● ● ● ● ● ●	●	■ ● ● ● ●
G07715 Carrying Basket, 2/cs	■	■ ■ ■ ■	■ ■	■ ■ ■ ■	● ● ● ●	■ ■ ■ ■ ■ ■ ■ ■	■	■ ■ ■ ■ ■ ■ ■ ■



Transport Chairs

Transport chairs make it easier for caregivers to help individuals get around comfortably and easily. Compared to standard wheelchairs, a transport chair requires a caregiver to push the chair.

A transport chair is much lighter than a wheelchair and comes in a variety of colors and materials such as steel and aluminum. They are more compact, great for light use and getting from one place to another. Wheel sizes vary from 8" to 12" for durability and a 17" or 19" seat width fits most every need.



Basic Steel Transport Chairs with 8" Wheels Tool-free Assembly

- Durable steel frame with black nylon upholstery
- Includes detachable swing-away footrests for maximum comfort and ease of mobility
- Back folds down for convenient transporting
- Weighs 30–35 lbs



Item No.	Description	Wt. Cap.	Leg Style	Arm Style	Seat Width	HCPCS	Retail Pkg.	Pkg.
MDS808200B*	Black	250 lbs (113.4 kg)	Swing-away	Full-length, Permanent	19"	E0138	N	1 ea
MDS808200BN*	Black	300 lbs (136.1 kg)	Swing-away	Full-length, Permanent	17"	E0138	N	1 ea
New TCS196N13SR	Red	250 lbs (113.4 kg)	Swing-away	Full-length, Permanent	19"	E0138	N	1 ea
New TCS176N13SR	Red	250 lbs (113.4 kg)	Swing-away	Full-length, Permanent	17"	E0138	N	1 ea
New TCS196N13SB	Blue	250 lbs (113.4 kg)	Swing-away	Full-length, Permanent	19"	E0138	N	1 ea
New TCS176N13SB	Blue	250 lbs (113.4 kg)	Swing-away	Full-length, Permanent	17"	E0138	N	1 ea
MDS808200BP	Black	250 lbs (113.4 kg)	Swing-away	Desk-length, Swing-back	19"	E0138	N	1 ea
MDS808200BNP	Black	250 lbs (113.4 kg)	Swing-away	Desk-length, Swing-back	17"	E0138	N	1 ea
MDS808200	Chrome	300 lbs (136.1 kg)	Swing-away	Full-length, Permanent	19"	E0138	N	1 ea
MDS808200KD**	Red	300 lbs (136.1 kg)	Swing-away	Desk-length, Permanent	19"	E0138	Y	1 ea
MDS808200WAT	Red	300 lbs (136.1 kg)	Swing-away	Desk-length, Permanent	19"	E0138	N	1 ea

*Includes anti-tippers

**Knockdown

Basic Steel Transport Chairs with 12" Rear Wheels Tool-free Assembly

- Durable steel frame with nylon upholstery
- Includes detachable footrests and a seat belt for safety
- Back folds down for convenient transporting
- 12" rear wheel for ease on all terrains
- Weighs 30–35 lbs

MDS808200KDT



Item No.	Description	Wt. Cap.	Leg Style	Arm Style	Seat Width	HCPCS	Retail Pkg.	Pkg.
MDS808210KDR*	Burgundy	300 lbs (136.1 kg)	Swing-away	Desk-length, Permanent	19"	E0138	N	1 ea
MDS808200KDT*	Teal	300 lbs (136.1 kg)	Swing-away	Full-length, Permanent	19"	E0138	Y	1 ea
MDS808200KWM	Tan	300 lbs (136.1 kg)	Swing-away	Desk-length, Permanent	19"	E0138	N	1 ea
MDS808200KNM	Navy	300 lbs (136.1 kg)	Swing-away	Desk-length, Permanent	19"	E0138	N	1 ea

*Antimicrobial properties are built-in to protect the product. This product does not protect users or others against bacteria, viruses, germs or other disease organisms.

Aluminum Transport Chairs with 8" Wheels Tool-free Assembly

- Powder-coated aluminum frame with black nylon upholstery
- Includes seat belt for safety and padded arms
- Weighs 20–23 lbs

MDS808200ABE



Item No.	Description	Wt. Cap.	Leg Style	Arm Style	Seat Width	HCPCS	Retail Pkg.	Pkg.
MDS808200ABE	Blue	300 lbs (136.1 kg)	Swing-away	Full-length, Permanent	19"	E1038	N	1 ea
MDS808200ARE	Red	300 lbs (136.1 kg)	Swing-away	Full-length, Permanent	19"	E1038	N	1 ea
MDS808100ABE	Blue	300 lbs (136.1 kg)	Swing-away	Full-length, Permanent	17"	E0138	N	1 ea
MDS808100ARE	Red	300 lbs (136.1 kg)	Swing-away	Full-length, Permanent	17"	E0138	N	1 ea

Aluminum Transport Chairs with 12" Wheels Tool-free Assembly

- Powder coated aluminum frame with black nylon upholstery
- Includes detachable swing away footrest and padded full length arm rests
- Larger back tire for maneuvering through obstacles
- Hand brakes on handles
- Weighs 23.5 lbs

MDS808210ARE



Item No.	Description	Wt. Cap.	Leg Style	Arm Style	Seat Width	HCPCS	Retail Pkg.	Pkg.
MDS808210ABE	Blue	300 lbs (136.1 kg)	Swing-away	Full-length, Permanent	19"	E1038	N	1 ea
MDS808210ARE	Red	300 lbs (136.1 kg)	Swing-away	Full-length, Permanent	19"	E1038	N	1 ea

Excel® Translator Combination Rollator/Transport Chairs Tool-free Assembly

- Durable steel frame with black nylon upholstery
- Includes easy-to-adjust, push-button, swing-away footrests
- Footrests lock to sides of rollator when not in use
- Height-adjustable push grips and comfortable hand brake
- Weighs 20–22 lbs

Item No.	Description	Wt. Cap.	Leg Style	Arm Style	Height	HCPCS	Retail Pkg.	Pkg.
MDS808200TRR	Red	250 lbs (113.4 kg)	Swing-away	Desk Length, Permanent	19"	E0143 + E0156	N	1 ea
MDS808200TR	Blue	250 lbs (113.4 kg)	Swing-away	Desk Length, Permanent	19"	E0143 + E0156	N	1 ea

Translator Combo Transport Chair Rollators Tool-free Assembly

- Quickly and easily converts from a rollator to a transport chair and vice-versa
- Height-adjustable handles with comfortable hand brake; height ranges from 37.75" to 40"
- Swing-away foot rests and back rest with push bar attachment
- Underseat carry bag
- Weighs 26 lbs

Item No.	Description	Wt. Cap.	Leg Style	Arm Style	Seat Width	HCPCS	Retail Pkg.	Pkg.
MDS868BTRB	Blue	300 lbs (136.1 kg)	Swing-away	Adjustable Handle Height	14"	E0143 + E0156	N	1 ea
MDS808200TRO	Black	300 lbs (136.1 kg)	Swing-away	Adjustable Handle Height	18"	E0143 + E0156	N	1 ea

Ultralight Transport Chairs Tool-free Assembly

- Lightweight aluminum frame with black nylon upholstery
- Carrying handles and compact design allow for easy and convenient storage and transport
- Weighs 15–21 lbs

Item No.	Description	Wt. Cap.	Leg Style	Arm Style	Seat Width	HCPCS	Retail Pkg.	Pkg.
MDS808200F3R*	Red	300 lbs (136.1 kg)	Swing-away	Desk Length, Permanent	19"	–	Y	1 ea
MDS808200F3B*	Blue	300 lbs (136.1 kg)	Swing-away	Desk Length, Permanent	19"	–	Y	1 ea
MDS808200F3BK*	Black	300 lbs (136.1 kg)	Swing-away	Desk Length, Permanent	19"	–	N	1 ea
MDS808200F3S*	Silver	300 lbs (136.1 kg)	Swing-away	Desk Length, Permanent	19"	–	N	1 ea

*Includes cup holder



MDS808200TR



MDS868BTRB



MDS808200F3B

Zero G Ultralight Transport Chairs New ✂ Tool-free Assembly

- Lightweight aluminum frame with padded upholstery
- 13" back tires for maneuvering through obstacles
- Hand brakes on handles
- Weighs 20-23 lbs

Item No.	Description	Wt. Cap.	Leg Style	Arm Style	Seat Width	HCPCS	Retail Pkg.	Pkg.
TCL186N23SB	Blue	250 lbs (113.4 kg)	Swing-away	Desk Length, Permanent	19"	-	N	1 ea
TCL186N23SR	Red	250 lbs (113.4 kg)	Swing-away	Desk Length, Permanent	19"	-	N	1 ea

Bariatric Transport Chairs ✂ Tool-free Assembly

- Durable frame with black nylon upholstery
- Seat belt and wheel lock offer better control
- Weighs 41-45 lbs

Item No.	Description	Wt. Cap.	Leg Style	Arm Style	Seat Width	HCPCS	Retail Pkg.	Pkg.
TCB228N21S	Bariatric Steel, Blue	450 lbs (204.1 kg)	Swing-away	Desk Length, Removable	22"	E1039	N	1 ea
New TCB228N21SRR	Bariatric Steel, Red	450 lbs (204.1 kg)	Swing-away	Desk Length, Removable	22"	E1039	N	1 ea
TCB228N22S	Bariatric Steel, Blue	450 lbs (204.1 kg)	Swing-away	Desk Length, Swing-back	22"	E1039	N	1 ea
New TCB228N22SR	Bariatric Steel, Red	450 lbs (204.1 kg)	Swing-away	Desk Length, Swing-back	22"	E1039	N	1 ea
MDS80822B*	Bariatric Steel, Red	500 lbs (226.8 kg)	Swing-away	Desk Length, Removable	22"	E1039	N	1 ea
MDS808200BAR*	Bariatric, Lightweight, Aluminum, Red	400 lbs (181.4 kg)	Elevating	Full length, Permanent	22"	E1039	N	1 ea
New TCB228V12E*	Bariatric, Lightweight, Aluminum, Red	400 lbs (181.4 kg)	Elevating	Full length, Swing-back	22"	E1039	N	1 ea

*Includes handbrakes

Folding Transport Chair ✂ Tool-free Assembly

- Powder-coated aluminum frame that can fold flat for easy storage and transport
- Folds similar to a lawn chair for ease of mobility and convenience
- Seat belt, comfortable padded arms and rear brakes for greater security when getting in or out of the chair
- Includes a carrying bag
- Weighs 16-18 lbs

Item No.	Description	Wt. Cap.	Leg Style	Arm Style	Seat Width	HCPCS	Retail Pkg.	Pkg.
TCP198N22ST	Aluminum, Carry Bag	250 lbs (113.4 kg)	Flip-Up	Desk Length, Swing-back	18" x 17"	-	Y	1 ea



TCL186N23SR



MDS80822B



TCP198N22ST

Wheelchairs

When choosing a wheelchair, there are many factors to consider including Arm Style, Leg Style, Weight Capacity and Seat Size. Refer to the guide below to determine the most suitable wheelchair for your needs.

Arm Style: Many users require the armrests in order to safely perform transfers in and out of a wheelchair. Individuals who can stand also use the armrests for support when getting in and out of the wheelchair. Properly fitted armrests when used help in maintaining a correct and functional seated posture. Arm Style choices include:

- Desk-Length Armrests
 - Removable
 - Swing-back and removable
 - Height-adjustable, swing-back, and removable
- Full-Length Armrests
 - Fixed
 - Removable
 - Swing-back and removable
 - Height-adjustable, swing-back, and removable

Leg Style: The main purpose of these leg rests is to help increase comfort. There are two options for leg style:

- Swing-away
- Elevating

Weight Cap.: Wheelchairs come with varying weight limits. Basic wheelchairs have weight limits of 300–350 lbs, lightweight or pediatric wheelchairs have weight limits of 150–250 lbs, and extra wide and bariatric wheelchairs have weight limits of 500–850 lbs.

Seat Size: Seat widths typically range from 16 to 20 inches, with an average width of about 18 inches. Take seat depth into consideration as it will make a difference in overall comfort and usage. Seat depth is the distance from the back of the seat to the front edge and should be measured when the user is sitting straight up.

Guardian Wheelchair Ordering Key

Type of Chair	Seat Width	Seat Depth (last digit only)	Upholstery Material	Arm Pad Style	Arm Function Type	Leg Rest Style	Additional Accessories (Optional)
K1	16"	6=16"	N=Nylon	1=Full-length	1=Removable	S=Swing-away	1=Anti-Tippers, Seatbelt, Brake Ext., Seat Ext.
K2	18"	8=18"	V=Vinyl	2=Desk-length	2=Swing-back	E=Elevating	
K3	20"	8=18"		3=Desk-length Height-adjustable	3=Permanent		
K4	22"	0=20"		4=Full-length Height-adjustable	4 = Swing-back and removable		
KR = Recliner	24"	E=Expandable 16-18"					
KX = Extra-Wide							

Example:

K1 16 6 V 2 2 S -

Type of Chair	Seat Width	Seat Depth (last digit only)	Upholstery Material	Arm Pad Style	Arm Function Type	Leg Rest Style	Additional Accessories (Optional)
---------------	------------	------------------------------	---------------------	---------------	-------------------	----------------	-----------------------------------

Complete Item Number: K1166V22S

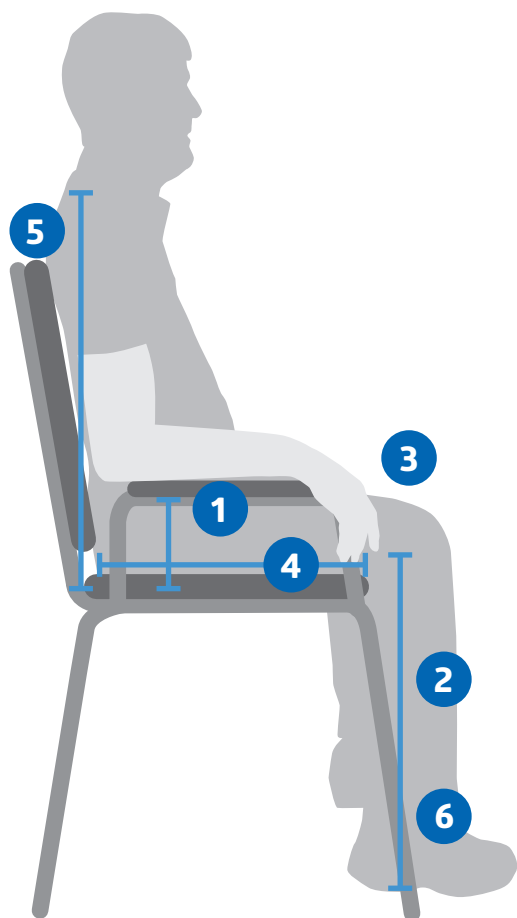


K1166V22S

Wheelchair Sizing Guide

Determine the best fit for your wheelchair in six easy steps.

The most important step to consider when choosing a wheelchair is a proper fit. It can make the difference between recovering well and causing an injury.



1 Determine Arm Type and Height

- **Full-length arm:** Gives support to pivot transfers when the patient pushes off to stand.
- **Desk-length arm:** Makes it easy to move around tables and desks.
- **Height:** Measure from the elbow to the seat of the chair while holding arms up with elbows bent at a 90-degree angle. Use adjustable arms when possible.

2 Determine Footrest Style

- **Elevated leg rest:** Raises legs
- **Articulation leg rest:** Extends longer for taller patients.
- **Length:** Measure from back of the knee to the heel of the foot.

3 Determine Wheelchair Weight and Weight Limit

- **Weight Cap.:** Choose wheelchair weight based on the patient's weight.
- **Upper body strength:** Choose lighter wheelchairs for weaker patients.

4 Determine Seat Size

- **Seat width:** Measure from hip to hip in a straight line and then add two inches.
- **Seat depth:** Measure from the back of the hip to the back of the knee while seated and then subtract one inch.

5 Determine Back Height

- **Standard back height:** Measure from collarbone to the seat while seated.
- **Taller back height:** Require additional upper trunk support to be installed.

6 Determine Floor to Seat Height

- **Movement:** Check if the patient uses feet to propel or move.
- **Height:** Measure the distance between the back of the knee and the heel.

Wheelchair Comparison Guide

Navigate the options to find the wheelchairs that are right for you.

	Product Weight	Weight Capacity	Seat Width									Seat Depth	Upholstery		Arm Styles		
			12"	14"	16"	18"	20"	22"	24"	26"	28"		30"	Nylon	Vinyl	Fixed	Removable
Guardian K1*	38 lbs	300 lbs			•	•	•					16"	•	•	•	•	
Guardian K3*	35 lbs	300 lbs			•	•	•					16"	•				•
Guardian K4	33 lbs	300 lbs			•	•	•					16"	•				•
Excel K4 Lightweight	31.5 lbs	300-350 lbs			•	•	•	•				16/18"	•				•
Guardian Extra Wide	58 lbs	500 lbs					•	•	•	•		18"		•		•	
Excel 2000	35 lbs	300 lbs			•	•	•					16"		•	•	•	
Excel Extra Wide	58 lbs	500 lbs					•	•	•			18"		•		•	
Hybrid	33 lbs	300 lbs			•	•						16"	•			•	
Excel Recliner	38 lbs	300 lbs			•	•	•	•				17"		•		•	
Guardian Recliner	58 lbs	300 lbs			•	•	•					16"	•			•	
Guardian Extra-Wide Recliner	69 lbs	450 lbs						•	•	•		19"		•		•	
Shuttle Bariatric	88 lbs	850 lbs							•	•	•	20"	•			•	
Pediatric	38 lbs	250 lbs	•	•								12"	•	•			•



Guardian K1 – Page 46



Guardian K3 – Page 48



Guardian K4 – Page 50



Excel K4 Lightweight – Page 51



Hybrid – Page 53



Excel Recliner – Page 52



Guardian Recliner – Page 52



Guardian Extra-Wide Recliner – Page 52

	Armpad Styles				Legrest/Footrest			Frame Finish				
	Full-Length	Desk-Length	Desk-Length Ht. Adjustable	Full-Length Ht. Adjustable	Fixed Footrest	Swing-Away Footrest	Elevating Legrest	Silver Vein Hammertone	Black Powder Coated	Blue Powder Coated	Yellow Powder Coated	Chrome Plated
Guardian K1*	•	•				•	•	•				
Guardian K3*	•	•	•	•		•	•	•				
Guardian K4	•	•	•	•		•	•	•				
Excel K4 Lightweight	•	•				•	•		•			
Guardian Extra Wide		•				•	•	•				
Excel 2000	•	•			•	•	•					•
Excel Extra Wide	•	•				•	•					•
Hybrid 2		•				•	•			•		
Excel Recliner		•					•					•
Guardian Recliner	•	•					•	•				
Guardian Extra-Wide Recliner		•					•	•				
Shuttle Bariatric	•						•	•				
Pediatric	•					•	•			•	•	



Guardian Extra Wide – Page 47



Excel 2000 – Page 53



Excel Extra Wide – Page 54



Shuttle Bariatric – Page 54



Pediatric – Page 55

Guardian® K1 Wheelchairs  **Tool-free Assembly**

- Durable Hammertone frame; available in nylon or vinyl upholstery
- Hemi-height adjustable
- Accommodate 2" seat extender



Works with 2" seat extenders

Nylon

Arm Style	Leg Style	Item No.	Frame Color	Wt. Cap.	Seat Size	Product Weight	Assembled Width	Seat to Floor Ht.	HCPCS	Retail Pkg.	Pkg.
Desk-length, Swing-back	Swing-away	K1166N22S	Black	300 lbs (136.1 kg)	16" x 16"	38 lbs	23.5"	18"-20"	K0001 or K0002 + E0951	N	1 ea
		K1186N22S	Black	300 lbs (136.1 kg)	18" x 16"	38 lbs	26.5"	18"-20"	K0001 or K0002 + E0951	N	1 ea
		K1206N22S	Black	300 lbs (136.1 kg)	20" x 16"	38 lbs	26.5"	18"-20"	K0001 or K0002 + E0951	N	1 ea
	Elevating	K1166N22E	Black	300 lbs (136.1 kg)	16" x 16"	38 lbs	23.5"	18"-20"	K0001 or K0002 + E0990	N	1 ea
		K1186N22E	Black	300 lbs (136.1 kg)	18" x 16"	38 lbs	26.5"	18"-20"	K0001 or K0002 + E0990	N	1 ea
		K1206N22E	Black	300 lbs (136.1 kg)	20" x 16"	38 lbs	25"	18"-20"	K0001 or K0002 + E0990	N	1 ea
Full-length, Permanent	Elevating	K118EN22E*	Black	300 lbs (136.1 kg)	18" x 16"-18"	38 lbs	26.5"	18"-20"	K0006 + K0195	N	1 ea
		K1186N13S	Black	300 lbs (136.1 kg)	18" x 16"	38 lbs	25"	18"-20"	K0001 or K0002 + E0951	N	1 ea
Full-length, Permanent	Elevating	K1186N13E	Black	300 lbs (136.1 kg)	18" x 16"	38 lbs	25"	18"-20"	K0001 or K0002 + E0990	N	1 ea

*Comes with 2" seat extender.

Vinyl

Arm Style	Leg Style	Item No.	Frame Color	Wt. Cap.	Seat Size	Product Weight	Assembled Width	Seat to Floor Ht.	HCPCS	Retail Pkg.	Pkg.
Desk-length, Swing-back	Swing-away	K1166V22S	Black	300 lbs (136.1 kg)	16" x 16"	38 lbs	23.5"	18"-20"	K0006	N	1 ea
		K1186V22S	Black	300 lbs (136.1 kg)	18" x 16"	38 lbs	25"	18"-20"	K0006	N	1 ea
		K1206V22S	Black	300 lbs (136.1 kg)	20" x 16"	38 lbs	26.5"	18"-20"	K0006 + E2201	N	1 ea
	Elevating	K1166V22E	Black	300 lbs (136.1 kg)	16" x 16"	38 lbs	23.5"	18"-20"	K0006 + K0195	N	1 ea
		K1186V22E	Black	300 lbs (136.1 kg)	18" x 16"	38 lbs	25"	18"-20"	K0006 + K0195	N	1 ea
		K1206V22E	Black	300 lbs (136.1 kg)	20" x 16"	38 lbs	26.5"	18"-20"	K0006 + E2201 + K0195	N	1 ea
Full-length, Removable	Elevating	K1166V11E	Black	300 lbs (136.1 kg)	16" x 16"	38 lbs	23.5"	18"-20"	K0006 + K0195	N	1 ea
	Swing-away	K1186V11S	Black	300 lbs (136.1 kg)	18" x 16"	38 lbs	25"	18"-20"	K0006	N	1 ea
		K1186V11E	Black	300 lbs (136.1 kg)	18" x 16"	38 lbs	25"	18"-20"	K0006 + K0195 or E0990	N	1 ea
	Elevating	K1206V11E	Black	300 lbs (136.1 kg)	20" x 16"	38 lbs	25"	18"-20"	K0006 + K0195	N	1 ea

Guardian® Extra-Wide Wheelchairs Tool-free Assembly

- Durable Hammertone frame and wipeable vinyl upholstery
- Heavy-duty frame with 500 lb weight cap.

Vinyl

Arm Style	Leg Style	Item No.	Frame Color	Wt. Cap.	Seat Size	Product Weight	Assembled Width	Seat to Floor Ht.	HCPSCS	Retail Pkg.	Pkg.
Removable Desk-length Arms	Swing-away	KX208V21S	Black	500 lbs (226.8 kg)	20" x 18"	58 lbs	30.5"	20"	K0007 + E2201	N	1 ea
		KX228V21S	Black	500 lbs (226.8 kg)	22" x 18"	58 lbs	32"	20"	K0007 + E2201	N	1 ea
		KX248V21S	Black	500 lbs (226.8 kg)	24" x 18"	58 lbs	33.5"	20"	K0007 + E2201	N	1 ea
	Elevating	KX268V21S	Black	500 lbs (226.8 kg)	26" x 18"	58 lbs	35"	20"	K0007 + E2202	N	1 ea
		KX208V21E	Black	500 lbs (226.8 kg)	20" x 18"	58 lbs	30.5"	20"	K0007 + E2201 + K0195	N	1 ea
		KX228V21E	Black	500 lbs (226.8 kg)	22" x 18"	58 lbs	32"	20"	K0007 + E2201 + K0195	N	1 ea
		KX248V21E	Black	500 lbs (226.8 kg)	24" x 18"	58 lbs	33.5"	20"	K0007 + E2201 + K0195	N	1 ea
		KX268V21E	Black	500 lbs (226.8 kg)	26" x 18"	58 lbs	35"	20"	K0007 + E2201 + K0195	N	1 ea

KX228V21S

Swing-away leg style



Guardian® K3 Wheelchairs Tool-free Assembly

- Durable Hammertone frame and easy-to-clean nylon upholstery
- Swing-back arms are also removable for easy transfers and storage
- Hemi-height adjustable

Arm Style	Leg Style	Item No.	Frame Color	Wt. Cap.	Seat Size	Product Weight	Assembled Width	Seat to Floor Ht.	HCPCS	Retail Pkg.	Pkg.
Desk-length Swing-back and Removable	Swing-away	K3166N24S	Black	300 lbs (136.1 kg)	16" x 16"	35	23.5"	18"-20"	K0003	N	1 ea
		K3186N24S	Black	300 lbs (136.1 kg)	18" x 16"	35	25"	18"-20"	K0003	N	1 ea
		K3186N24SRKD*	Black	300 lbs (136.1 kg)	18" x 16"	35	25"	18"-20"	-	Y	1 ea
	Elevating	K3206N24S	Black	300 lbs (136.1 kg)	20" x 16"	35	26.5"	18"-20"	K0003	N	1 ea
		K3166N24E	Black	300 lbs (136.1 kg)	16" x 16"	35	23.5"	18"-20"	K0003 + K0095	N	1 ea
		K3186N24E	Black	300 lbs (136.1 kg)	18" x 16"	35	25"	18"-20"	K0003 + K0095	N	1 ea
Desk-length, Height- adjustable, Swing-back and Removable	Swing-away	K3206N24E	Black	300 lbs (136.1 kg)	20" x 16"	35	26.5"	18"-20"	K0003 + K0095	N	1 ea
		K3166N34S	Black	300 lbs (136.1 kg)	16" x 16"	35	23.5"	18"-20"	K0003 + E0951 + E0971 + E0973	N	1 ea
		K3186N34S	Black	300 lbs (136.1 kg)	18" x 16"	35	25"	18"-20"	K0003 + E0951 + E0971 + E0973	N	1 ea
	Elevating	K3206N34S	Black	300 lbs (136.1 kg)	20" x 16"	35	26.5"	18"-20"	K0003 + E0951 + E0971 + E0973	N	1 ea
		K3166N34E	Black	300 lbs (136.1 kg)	16" x 16"	35	23.5"	18"-20"	K0003 + E0951 + E0971 + E0974 + E0990 K0003 + E0951 + E0971 + E0974 + E0990	N	1 ea
		K3186N34E	Black	300 lbs (136.1 kg)	18" x 16"	35	25"	18"-20"	K0003 + E0951 + E0971 + E0974 + E0990	N	1 ea
Full-length, Swing-back and Removable	Swing-away	K3206N34E	Black	300 lbs (136.1 kg)	20" x 16"	35	26.5"	18"-20"	K0003 + E0951 + E0971 + E0974 + E0990	N	1 ea
		K3166N14S	Black	300 lbs (136.1 kg)	16" x 16"	35	23.5"	18"-20"	K0003	N	1 ea
		K3186N14S	Black	300 lbs (136.1 kg)	18" x 16"	35	25"	18"-20"	K0003, K0003	N	1 ea
	Elevating	K3206N14S	Black	300 lbs (136.1 kg)	20" x 16"	35	26.5"	18"-20"	K0003, K0007 + K0195 + E0990	N	1 ea
		K3166N14E	Black	300 lbs (136.1 kg)	16" x 16"	35	23.5"	18"-20"	K0003, K0003 + E0990 + K0195	N	1 ea
		K3186N14E	Black	300 lbs (136.1 kg)	18" x 16"	35	25"	18"-20"	K0003, K0007 + K0195 + E0990	N	1 ea
Full-length, Height- adjustable, Swing-back and Removable	Swing-away	K3206N14E	Black	300 lbs (136.1 kg)	20" x 16"	35	26.5"	18"-20"	K0003, K0003	N	1 ea
		K3166N44S	Black	300 lbs (136.1 kg)	16" x 16"	35	23.5"	18"-20"	K0003	N	1 ea
		K3186N44S	Black	300 lbs (136.1 kg)	18" x 16"	35	25"	18"-20"	K0003	N	1 ea
	Elevating	K3206N44S	Black	300 lbs (136.1 kg)	20" x 16"	35	26.5"	18"-20"	K0003, K0003	N	1 ea
		K3166N44E	Black	300 lbs (136.1 kg)	16" x 16"	35	25"	18"-20"	K0003, K0003 + E0990 or K0195	N	1 ea
		K3186N44E	Black	300 lbs (136.1 kg)	18" x 16"	35	26.5"	18"-20"	K0003, K0003 + E0990 or K0195	N	1 ea
K3206N44E	Black	300 lbs (136.1 kg)	20" x 16"	35	25"	18"-20"	K0006 + K0195	N	1 ea		

*Knockdown

The K3 Plus wheelchair comes standard with the accessories your customers are looking for.

Guardian® K3 Plus Wheelchairs Tool-free Assembly

- Durable Hammertone frame and easy-to-clean nylon upholstery
- Swing-back arms are also removable for easy transfers and storage
- Hemi-height adjustable
- Includes seat belt, anti-tippers, seat depth extender and brake extenders

Height-adjustable, swing-back arms for comfort and easy side transfers

Seat belt prevents sliding or falling out of the wheelchair

Choose from elevating or swing-away foot rests

2" (5.1cm) seat depth extender for customer comfort

Brake extenders allow the user to independently lock the brakes



Anti-tippers for added safety

K3186N44E1



Heel loops for support and to prevent sliding (swing-away footrest models only)

Guardian® K3 Plus Wheelchairs Tool-free Assembly

Nylon

Arm Style	Leg Style	Item No.	Frame Color	Wt. Cap.	Seat Size	Product Weight	Assembled Width	Seat to Floor Ht.	HCPCS	Retail Pkg.	Pkg.
Desk-length, Height-adjustable, Swing-back and Removable	Swing-away	K3166N34S1	Black	300 lbs (136.1 kg)	16" x 16"-18"	35	23.5	18"-20"	-	N	1 ea
		K3186N34S1	Black	300 lbs (136.1 kg)	18" x 16"-18"	35	25	18"-20"	-	N	1 ea
		K3206N34S1	Black	300 lbs (136.1 kg)	20" x 16"-18"	35	26.5	18"-20"	-	N	1 ea
Full-length, Height-adjustable, Swing-back and Removable	Elevating	K3166N44E1*	Black	300 lbs (136.1 kg)	16" x 16"-18"	35	23.5"	18"-20"	K0003, K0003 + E0990 or K0195	N	1 ea
		K3186N44E1*	Black	300 lbs (136.1 kg)	18" x 16"-18"	35	23.5"	18"-20"	K0006 + K0195	N	1 ea
		K3206N44E1*	Black	300 lbs (136.1 kg)	20" x 16"-18"	35	26.5"	18"-20"	K0006 + K0195	N	1 ea

Guardian® K4 Wheelchairs Tool-free Assembly

- Durable, lightweight Hammertone frame only weighs 33 lbs
- Hemi-height adjustable
- Quick-release rear wheels

Nylon

Arm Style	Leg Style	Item No.	Frame Color	Wt. Cap.	Seat Size	Product Weight	Assembled Width	Seat to Floor Ht.	HCPCS	Retail Pkg.	Pkg.
Desk-length, Swing-back and Removable	Swing-away	K4166N24S	Black	300 lbs (136.1 kg)	16" x 16"	33 lbs	24.5"	18"-20"	K0004	N	1 ea
		K4186N24S	Black	300 lbs (136.1 kg)	18" x 16"	33 lbs	26"	18"-20"	K0004	N	1 ea
		K4206N24S	Black	300 lbs (136.1 kg)	20" x 16"	33 lbs	27.5"	18"-20"	K0004 + E2201	N	1 ea
	Elevating	K4166N24E	Black	300 lbs (136.1 kg)	16" x 16"	33 lbs	24.5"	18"-20"	K0004 + E0195	N	1 ea
		K4186N24E	Black	300 lbs (136.1 kg)	18" x 16"	33 lbs	27.5"	18"-20"	K0004 + E0195	N	1 ea
		K4206N24E	Black	300 lbs (136.1 kg)	20" x 16"	33 lbs	26"	18"-20"	K0004 + E0195 + E2201	N	1 ea
Desk-length, Height-adjustable, Swing-back and Removable	Swing-away	K4186N34S	Black	300 lbs (136.1 kg)	18" x 16"	33 lbs	26"	18"-20"	K0004 + E0973	N	1 ea
	Elevating	K4186N34E	Black	300 lbs (136.1 kg)	18" x 16"	33 lbs	26"	18"-20"	K0004 + E0195 + E0973	N	1 ea



K4186N44E1



K4186N34E

Guardian® K4 Plus Wheelchairs Tool-free Assembly

Quick-release wheels

- Includes seat belt, anti-tippers, seat depth extender, and brake extenders

Nylon

Arm Style	Leg Style	Item No.	Frame Color	Wt. Cap.	Seat Size	Product Weight	Assembled Width	Seat to Floor Ht.	HCPCS	Retail Pkg.	Pkg.
Full-length, Height-adjustable, Swing-back, and Removable	Elevating	K4166N44E1	Black	300 lbs (136.1 kg)	16" x 16"-18"	33 lbs	24.5"	18"-20"	K0006 + K0195 + E0973	N	1 ea
		K4186N44E1	Black	300 lbs (136.1 kg)	16" x 16"-18"	33 lbs	26"	18"-20"	K0006 + K0195 + E0973	N	1 ea
		K4206N44E1	Black	300 lbs (136.1 kg)	16" x 16"-18"	33 lbs	27.5"	18"-20"	K0006 + K0195 + E0973	N	1 ea

Excel K4 Lightweight Wheelchairs Tool-free Assembly

- Durable, lightweight TIG-welded frame folds down for easy transport
- Smooth-rolling tires are solid and flat-free for lasting durability
- Back height is adjustable and can be changed from the standard 16" to 17" or 18"

Arm Style	Leg Style	Item No.	Frame Color	Wt. Cap.	Seat Size	Product Weight	Assembled Width	Seat to Floor Ht.	HCPCS	Retail Pkg.	Pkg.		
Desk-length, Swing-back	Swing-away	MDS806500N	Black	300 lbs (136.1 kg)	16" x 16"	30.5	23.25"	18"-20"	K0004	N	1 ea		
		MDS806500	Black	300 lbs (136.1 kg)	18" x 16"	31.5	25.25"	18"-20"	K0004	N	1 ea		
		MDS806560	Black	350 lbs (158.8 kg)	20" x 16"	33.5	27.25"	18"-20"	K0004 + E2201	N	1 ea		
		MDS806570	Black	350 lbs (158.8 kg)	22" x 16"	35.5	29.25"	18"-20"	K0004 + E2201	N	1 ea		
	Elevating	MDS806550N	Black	300 lbs (136.1 kg)	16" x 16"	30.5	23.25"	18"-20"	K0004 + K0195 or E0990	N	1 ea		
		MDS806550	Black	300 lbs (136.1 kg)	18" x 16"	31.5	25.25"	18"-20"	K0004	N	1 ea		
		MDS806565	Black	350 lbs (158.8 kg)	20" x 16"	35.5	29.25"	18"-20"	K0004 + E2201 + K0195	N	1 ea		
		MDS806575	Black	350 lbs (158.8 kg)	22" x 16"	35.5	29.25"	18"-20"	K0004 + E2201 + K0195	N	1 ea		
		Full-length, Removable	Swing-away	MDS806500FLA	Black	300 lbs (136.1 kg)	18" x 16"	31.5	25.25"	18"-20"	-	N	1 ea
			Elevating	MDS806550FLA	Black	300 lbs (136.1 kg)	18" x 16"	31.5	25.25"	18"-20"	-	N	1 ea



MDS806560



MDS806500FLA

Guardian® Reclining Wheelchairs Tool-free Assembly

- Infinite position reclining from 90° – 180°
- Durable Hammertone frame
- Nylon upholstery

Arm Style	Leg Style	Item No.	Frame Color	Wt. Cap.	Seat Size	Product Weight	Assembled Width	Seat to Floor Ht.	HCPCS	Retail Pkg.	Pkg.
Desk-length, Removable	Elevating	KR168N21E	Black	300 lbs (136.1 kg)	16" x 18"	58 lbs	25.5"	20"	K0006 + E0990 + E1226	N	1 ea
		KR188N21E	Black	300 lbs (136.1 kg)	18" x 18"	58 lbs	27"	20"	K0006 + E0990 + E1226	N	1 ea
		KR208N21E	Black	300 lbs (136.1 kg)	20" x 18"	58 lbs	28.5"	20"	K0006 + E0990 + E1226	N	1 ea
Full-length Removable	Elevating	KR188N11E	Black	300 lbs (136.1 kg)	18" x 18"	58 lbs	27"	20"	K0006 + E0990 + E1226	N	1 ea

Excel® Reclining Wheelchairs Tool-free Assembly

- Infinite position reclining from 90° – 140°
- Durable carbon steel frame and easy-to-clean vinyl upholstery
- Hemi-height adjustable

Arm Style	Leg Style	Item No.	Frame Color	Wt. Cap.	Seat Size	Product Weight	Assembled Width	Seat to Floor Ht.	HCPCS	Retail Pkg.	Pkg.
Desk-length, Removable	Elevating	MDS808350	Chrome	300 lbs (136.1 kg)	16" x 17"	44 lbs	24.5"	17"-19"	K0003 + E0966 + E1226 + K0195 + E0971	N	1 ea
		MDS808450	Chrome	300 lbs (136.1 kg)	18" x 17"	45 lbs	26.5"	17"-19"	K0003 + E0966 + E1226 + K0195 + E0971	N	1 ea
		MDS808550	Chrome	350 lbs (158.8 kg)	20" x 17"	46 lbs	28.5"	17"-19"	K0003 + E0966 + E1226 + K0195 + E0971 + E2201	N	1 ea
		MDS808650	Chrome	350 lbs (158.8 kg)	22" x 17"	47 lbs	30.5"	17"-19"	K0007 + E1226 + E2201 + E0971 + E0966 + K0195 or E0990	N	1 ea

Guardian Extra-Wide Reclining Wheelchairs Tool-free Assembly

- Infinite position reclining from 90° – 180°
- Heavy-duty Hammertone frame

Arm Style	Leg Style	Item No.	Frame Color	Wt. Cap.	Seat Size	Product Weight	Assembled Width	Seat to Floor Ht.	HCPCS	Retail Pkg.	Pkg.
Desk-length, Removable	Elevating	KR228V21E	Black	450 lbs (204 kg)	22" x 19"	68 lbs	31.5"	20.5"	K0007 + E2202 + E1226 + K0195	N	1 ea
		KR248V21E	Black	450 lbs (204 kg)	24" x 19"	69 lbs	33"	20.5"	K0007 + E2202 + K0195 + E1226	N	1 ea
		KR268V21E	Black	450 lbs (204 kg)	26" x 19"	70 lbs	34.5"	20.5"	K0007 + E2202 + K0195 + E1226	N	1 ea



KR168N21E



MDS808550



KR228V21E

Hybrid Wheelchairs Tool-free Assembly

- Combination wheelchair and transport chair
- Quick-release large wheel
- Easy-to-clean nylon upholstery

MDS806250NH2



Arm Style	Leg Style	Item No.	Frame Color	Wt. Cap.	Seat Size	Product Weight	Assembled Width	Seat to Floor Ht.	HCPCS	Retail Pkg.	Pkg.
Desk-length, Removable	Swing-away	MDS806250NH2	Blue	300 lbs (136.1 kg)	16" x 16"	31 w/ wheels, 22 w/out	23.25"-24.5"	20"	K0004 or E1038	N	1 ea
		MDS806250H2	Blue	300 lbs (136.1 kg)	18" x 16"	33 w/ wheels, 24 w/out	25.25"-26.5"	20"	K0004 or E1038	N	1 ea
	Elevating	MDS806300H2	Blue	300 lbs (136.1 kg)	18" x 16"	33 w/ wheels, 24 w/out	25.25"-26.5"	20"	K0004 or E1038 + K0195 or E0990	N	1 ea

Excel® 2000 Wheelchairs Tool-free Assembly

- Durable carbon steel frame
- Hemi-height adjustable
- Easy-to-clean vinyl upholstery

MDS806250D



MDS806300D



Arm Style	Leg Style	Item No.	Frame Color	Upholstery Color	Wt. Cap.	Seat Size	Product Weight	Assembled Width	Seat to Floor Ht.	HCPCS	Retail Pkg.	Pkg.
Desk-length, Removable	Swing-away	MDS806250N	Chrome	Navy	300 lbs (136.1 kg)	16" x 16"	35.5	26"	18"-20"	K0001 or K0002	N	1 ea
		MDS806250D	Chrome	Black	300 lbs (136.1 kg)	18" x 16"	38.5	26.75"	18"-20"	K0001 or K0002 + E0990 or K0195	N	1 ea
		MDS806400	Chrome	Black	300 lbs (136.1 kg)	20" x 16"	39	29.5"	18"-20"	K0001 + E2201	N	1 ea
	Elevating	MDS806300N	Chrome	Navy	300 lbs (136.1 kg)	16" x 16"	35.5	26"	18"-20"	K0001 or K0002 + K0195	N	1 ea
		MDS806300D	Chrome	Black	300 lbs (136.1 kg)	18" x 16"	38.5	26.75"	18"-20"	K0001 or K0002	N	1 ea
		MDS806450	Chrome	Black	300 lbs (136.1 kg)	20" x 16"	39	29.5"	18"-20"	K0001 + E2201 + K0195	N	1 ea
Full-length, Permanent	Swing-away	MDS806150D	Chrome	Black	300 lbs (136.1 kg)	18" x 16"	38.5	26.75"	18"-20"	K0001 or K0002	N	1 ea
	Fixed Leg	MDS806100D	Chrome	Black	300 lbs (136.1 kg)	18" x 16"	38.5	26.75"	18"-20"	K0001 or K0002	N	1 ea
	Elevating	MDS806200N	Chrome	Navy	300 lbs (136.1 kg)	16" x 16"	35.5	26"	18"-20"	K0002 + K0195 or E0990	N	1 ea
		MDS806200D	Chrome	Black	300 lbs (136.1 kg)	18" x 16"	38.5	26.75"	18"-20"	K0002 + K0195 OR E0990	N	1 ea
Full-length, Removable	Swing-away	MDS806250FLA	Chrome	Black	300 lbs (136.1 kg)	18" x 16"	38.5	26.75"	18"-20"	-	N	1 ea
		MDS806400FLA	Chrome	Black	300 lbs (136.1 kg)	20" x 16"	39	29.5"	18"-20"	-	N	1 ea
	Elevating	MDS806300FLA	Chrome	Black	300 lbs (136.1 kg)	18" x 16"	38.5	26.75"	18"-20"	K0001 or K0002	N	1 ea
		MDS806450FLA	Chrome	Black	300 lbs (136.1 kg)	20" x 16"	39	29.5"	18"-20"	-	N	1 ea

Excel® Extra-wide Wheelchairs Tool-free Assembly

- Durable carbon steel frame
- Hemi-height adjustable
- Easy to clean navy vinyl upholstery

Arm Style	Leg Style	Item No.	Frame Color	Wt. Cap.	Seat Size	Product Weight	Assembled Width	Seat to Floor Ht.	HCPCS	Retail Pkg.	Pkg.
Desk-length, Removable	Swing-away	MDS806700	Chrome	500 lbs (226.8 kg)	20" x 18"	58 lbs	28.5"	18"-20"	K0007	N	1 ea
		MDS806800	Chrome	500 lbs (226.8 kg)	22" x 18"	59 lbs	30.5"	18"-20"	K0007	N	1 ea
		MDS806900	Chrome	500 lbs (226.8 kg)	24" x 18"	60 lbs	32.5"	18"-20"	K0007 + E2202	N	1 ea
	Elevating	MDS806750	Chrome	500 lbs (226.8 kg)	20" x 18"	58 lbs	28.5"	18"-20"	K0007 + K0195	N	1 ea
		MDS806850	Chrome	500 lbs (226.8 kg)	22" x 18"	59 lbs	30.5"	18"-20"	K0007 + K0195	N	1 ea
		MDS806950	Chrome	500 lbs (226.8 kg)	24" x 18"	60 lbs	32.5"	18"-20"	K0007 + E2202 + K0195	N	1 ea
Full-length, Removable	Swing-away	MDS806700FLA	Chrome	500 lbs (226.8 kg)	20" x 18"	58 lbs	28.5"	18"-20"	K0007	N	1 ea
		MDS806800FLA	Chrome	500 lbs (226.8 kg)	22" x 18"	59 lbs	30.5"	18"-20"	K0007	N	1 ea
		MDS806900FLA	Chrome	500 lbs (226.8 kg)	24" x 18"	60 lbs	32.5"	18"-20"	K0007 + E2202	N	1 ea
	Elevating	MDS806750FLA	Chrome	500 lbs (226.8 kg)	20" x 18"	58 lbs	28.5"	18"-20"	K0007 + K0195	N	1 ea
		MDS806850FLA	Chrome	500 lbs (226.8 kg)	22" x 18"	59 lbs	30.5"	18"-20"	K0007 + K0195	N	1 ea
		MDS806950FLA	Chrome	500 lbs (226.8 kg)	24" x 18"	60 lbs	32.5"	18"-20"	K0007 + E2202 + K0195	N	1 ea

Shuttle Bariatric Wheelchairs Tool-free Assembly

- Durable carbon steel frame
- Hemi-height adjustable
- Gray Hammertone finish with nylon upholstery

Arm Style	Leg Style	Item No.	Frame Color	Wt. Cap.	Seat Size	Product Weight	Assembled Width	Seat to Floor Ht.	HCPCS	Retail Pkg.	Pkg.
Desk-length, removable	Elevating	MDS809650	Black	850 lbs (385.5 kg)	24" x 20"	88 lbs	33.5"	18"-20"	K0007 + K0108 + E2203 + K0195	N	1 ea
		MDS809750	Black	850 lbs (385.5 kg)	26" x 20"	87 lbs	35.5"	18"-20"	K0007 + K0108 + E2203 + K0195	N	1 ea
		MDS809850	Black	850 lbs (385.5 kg)	28" x 20"	88 lbs	37.5"	18"-20"	K0007 + K0108 + E2203 + K0195	N	1 ea
		MDS809950	Black	850 lbs (385.5 kg)	30" x 20"	89 lbs	39.5"	18"-20"	K0007 + K0108 + E2203 + K0195	N	1 ea



Pediatric Wheelchairs Tool-free Assembly

- Treaded, flat-free tires for safe use
- Swing-back armrests for easier movement in and out of chair

Vinyl

Arm Style	Leg Style	Item No.	Frame Color	Wt. Cap.	Seat Size	Product Weight	Assembled Width	Seat to Floor Ht.	HCPCS	Retail Pkg.	Pkg.
Desk-length, Swing-back and Removable	Elevating	MDS806140PD*	Yellow	250 lbs (113.4 kg)	14" x 12"	38 lbs	22"	14"-16"	E1236 + E0971 + E0990 or K0195	N	1 ea

Nylon

Arm Style	Leg Style	Item No.	Frame Color	Wt. Cap.	Seat Size	Product Weight	Assembled Width	Seat to Floor Ht.	HCPCS	Retail Pkg.	Pkg.
Desk-length, Swing-back and Removable	Swing-away	KPD2N22S	Yellow	150 lbs (68.04 kg)	12" x 14"	38 lbs	22.5"	16"	E1236	N	1 ea
		KPD4N22S	Yellow	150 lbs (68.04 kg)	14" x 14"	30 lbs	21.5"	17"	E1236	N	1 ea
		KPD2N22S1*	Blue	150 lbs (68.04 kg)	12" x 14"	30 lbs	20"	17"	E1236	N	1 ea
		KPD4N22S1*	Blue	150 lbs (68.04 kg)	14" x 14"	30 lbs	21.5"	17"	E1236	N	1 ea

*Includes telescoping handles



Wheelchair Accessories

Anti-Fold Devices

Item No.	Description	Pkg.
MDS85196	Anti-Fold Device for 16"-22" Wheelchairs	1 ea
MDS851965SH	Anti-Fold Device for 24"-30" Wheelchairs	1 ea

Anti-Roll Back Devices

Item No.	Description	Pkg.
STMSM22	Anti-Rolback Device for 16"-20" Wheelchairs	1 ea
STMSM22W	Anti-rollback Device for 22"-24" Wheelchairs	1 ea

Anti-Tippers

Item No.	Description	Pkg.
MDS85189	Rear Anti-tip Device for Excel 2000 Wheelchair	1 pr
MDS85189H	Rear Anti-tip Device for Excel Extra-Wide	1 pr
MDS85189WK4	Anti-Tip Rear Wheel for Excel K4 and Recliner	1 pr
MDS85189SH	Rear Anti-Tipper for Shuttle Wheelchair	1 pr
MDS85189K	Rear Anti-Tipper for Kidz Pediatric Wheelchair	1 pr
WCAA0070	Guardian K1 Anti-Tipper	1 pr
WCAA0069	Guardian K3 Anti-Tipper	1 pr

Anti-Theft

Item No.	Description	Pkg.
MDS85197A	Adjustable Anti-theft Device for Wheelchair	1 ea
MDS85197SH	Overhead Antitheft Device for Shuttle Wheelchair	1 ea

Brake Extenders

Item No.	Description	Pkg.
MDS85157PR	Black Handle Extension Wheel Lock 5/8" x 8"	1 pr

O2 Holders/IV Poles

Item No.	Description	Pkg.
MDS85190	Oxygen Tank Holder and IV Pole for Guardian K1, Excel 2000, Excel Extra-Wide and Shuttle Wheelchairs	1 ea
MDS85180	5-in-1 IV/O2/Anti-theft Device	1 ea
WCA6100	Nylon Oxygen Tank Holder, Holds D and E Tanks	1 ea
MDS85181U	Oxygen Tank Holder for Guardian K1, Excel 2000, Excel Extra-Wide, and Shuttle Wheelchairs, Holds Standard-size Tanks	1 ea
MDS85183	Telescoping IV Pole for Excel 2000, Excel-Extra Wide, Excel K4, and Shuttle Wheelchairs	1 ea

Seat Belts

Item No.	Description	Pkg.
WCABELT	Wheelchair Safety Belt	1 ea

Seat Depth Extenders

Item No.	Description	Pkg.
WCAA0060	Guardian K1 18" Nylon 2" Seat Depth Extender	1 ea
WCAA0061	Guardian K1 20" Nylon 2" Seat Depth Extender	1 ea
WCAA0063	Guardian K1 18" Vinyl 2" Seat Depth Extender	1 ea
WCAA0064	Guardian K1 20" Vinyl 2" Seat Depth Extender	1 ea
WCAA0066	Guardian K3 16" 2"Seat Extender	1 ea
WCAA0067	Guardian K3 18" 2"Seat Extender	1 ea
WCAA0068	Guardian K3 20" 2"Seat Extender	1 ea

Other

Item No.	Description	Pkg.
WCA806991	Tinnerman Nut for Wheelchair	1 pr
MDSK41RMDRIVE	Single-arm Drive Attachment for Excel K4	1 ea
MDS85195	Super Hemi Height Kit for Excel 2000 and Excel K4 Wheelchairs	1 set



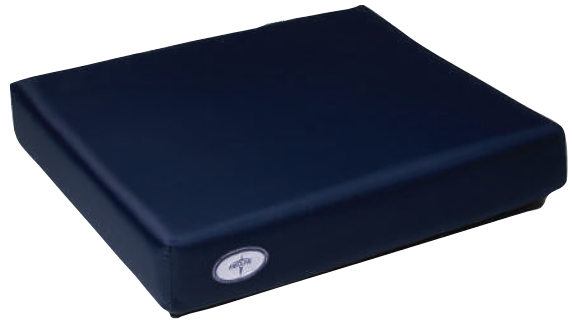
**Additional
mobility aid
products on
page 77**

Cushions for Wheelchairs and Transport Chairs

Medline Comfort Cushions

- Comfortable therapeutic foam
- Easy-to-clean, durable cover

Item No.	Description	Retail Pkg.	HCPCS	Pkg.
MSCCOMF1616	16" x 16" x 3"	Y	E2601	1 ea
MSCCOMF1618	16" x 18" x 3"	Y	E2601	1 ea
MSCCOMF1816	18" x 16" x 3"	Y	E2601	1 ea
MSCCOMF1818	18" x 18" x 3"	Y	E2601	1 ea
MSCCOMF2016	20" x 16" x 3"	Y	E2601	1 ea
MSCCOMF2018	20" x 18" x 3"	Y	E2601	1 ea
MSCCOMF2218	22" x 18" x 3"	Y	E2602	1 ea



MSCCOMF1816

Gel Foam Cushions

- Provides comfort and pressure redistribution
- Help redistribute pressure away from bony prominences
- Segmented gel pack between layers of high-resiliency foam
- Durable and easy-to-clean Nylex top cover and vinyl bottom cover

Item No.	Description	Retail Pkg.	HCPCS	Pkg.
MSCPRC21616	16" x 16" x 2"	Y	E2601	1 ea
MSCPRC21816	18" x 16" x 2"	Y	E2601	1 ea
MSCPRC21818	18" x 18" x 2"	Y	E2601	1 ea
MSCPRC22016	20" x 16" x 2"	Y	E2601	1 ea



EquaGel Cushions

- Adjustable cushion is virtually maintenance free with no pump to maintain, repair or replace
- Redistributes pressure with patented dual-layer structure and Micro-Immersion™ technology to cradle bony areas
- Efficiently manages heat and moisture with cooling gel and an open-cell design
- Minimizes shear and friction with the easy-to-clean all-way stretch cover

Item No.	Description	Retail Pkg.	HCPCS	Pkg.
MSCEQADJ1616	16" x 16" x 2.5"	Y	E2622	1 ea
MSCEQADJ1618	16" x 18" x 2.5"	Y	E2622	1 ea
MSCEQADJ1816	18" x 16" x 2.5"	Y	E2622	1 ea
MSCEQADJ1818	18" x 18" x 2.5"	Y	E2622	1 ea
MSCEQADJ2016	20" x 16" x 2.5"	Y	E2622	1 ea
MSCEQADJ2018	20" x 18" x 2.5"	Y	E2622	1 ea
MSCEQADJ2218	22" x 18" x 2.5"	Y	E2623	1 ea



MSCEQADJ1616

Bath Safety

Injury or health conditions can limit mobility and increase safety risks. Medline's bath safety solutions help provide stability, security and confidence throughout the bathroom.

Bath Safety SKU Identification Reference

A quick reference to help streamline product selection and inventory management, ensuring accurate identification for efficient stocking and tracking.

Sub Category	Description	Bath Safety Code	Features
G1	Commodes	A	Assembled
G2	Bath Bench	B	Bariatric
G3	Transfer Bench	D	Drop Arm
G4	Seat Raiser	E	Economy
G5	Rails/ Grab Bars	F	Folding
G7	Bath Accessories	H	Arms
		K	Knock Down
		L	Elongated
		M	Microban
		P	Padded
		R	Retail
		S	Suction
		W	Wheels
		X	Eaches

Example:

G1 L M X I

Commode	Elongated	Microban	Each	Qty
Complete Item Number: G1-200LMX1				

G4 B H R X I

Seat Riser	Bariatric	Arms	Retail Box	Each	Qty
Complete Item Number: G4-300BHRX1					

Commodes

Commodes can be used at bedside or as a toilet safety frame and elevated toilet seat over your existing toilet. Commode liners inside the commode bucket make clean-up easier and sanitary.

3-in-1 Commodes Tool-free Assembly

- Steel frame
- Includes seat, lid, bucket and splash guard
- Easy assembly
- Folds down for storage

Item No.	Description	Wt. Cap.	Seat Height	Seat Depth	Inside Arm Width	Overall Width	HCPCS	Retail Pkg.	Pkg.
MDS89664	Fixed, Standard Seating	350 lbs (158.8 kg)	15"-21"	15"	19"	24"	E0163	N	4/cs
G1-200X1	Folding, Standard Seating	350 lbs (158.8 kg)	16"-22"	14.5"	19"	21"	E0163	N	1 ea
G1-200X4	Folding, Standard Seating	350 lbs (158.8 kg)	16"-22"	14.5"	19"	21"	E0163	N	4/cs
G1-200RX1	Folding, Standard Seating	350 lbs (158.8 kg)	16"-22"	14.5"	19"	21"	E0164	Y	1 ea
G1-200LX1	Folding, Elongated Seating	350 lbs (158.8 kg)	16"-22"	16.5"	19"	21"	E0163	N	1 ea
G1-200LX4	Folding, Elongated Seating	350 lbs (158.8 kg)	16"-22"	16.5"	19"	21"	E0163	N	4/cs
G1-200MX1	Folding Standard Seating with Microban*	350 lbs (158.8 kg)	16"-22"	14.5"	19"	21"	E0163	N	1 ea
G1-200LMX1	Folding Elongated Seating with Microban*	350 lbs (158.8 kg)	16"-22"	16.5"	19"	21"	E0163	N	1 ea



G1-200X1



G1-200MX1

*Antimicrobial properties are built-in to protect the product. This product does not protect users or others against bacteria, viruses, germs or other disease organisms.

Padded Commodes Tool-free Assembly

- Padded commodes for increased comfort
- Comes with seat, bucket and splashguard

Item No.	Description	Wt. Cap.	Seat Height	Seat Depth	Inside Arm Width	Overall Width	HCPCS	Retail Pkg.	Pkg.
G1-508PX1*	Aluminum Padded Commode	300 lbs (136.1 kg)	20"-24"	16"	21.25"	24"	-	N	1 ea
G1-509PX1	Aluminum Padded Commode with Back	300 lbs (136.1 kg)	20.5"-24.4"	16"	20.3"	24.7"	-	N	1 ea
G1-301DPX1	Drop Arm, Padded	350 lbs (158.8 kg)	19"-23"	16.5"	20"	23"	E0165	N	1 ea
G98204	Drop Arm, Padded Seat and Back	350 lbs (158.8 kg)	20"-25"	18"-20"	18.5"	22"	E0165	N	1 ea

*Splashguard not included on G1-508PX1

Drop Arm Commodes Tool-free Assembly

- Armrests conveniently drop down for easy patient transfer
- Steel frame
- Comes with seat, lid, bucket and splash guard

Drop arm holds up to 350 lbs

Item No.	Description	Wt. Cap.	Seat Height	Seat Depth	Inside Arm Width	Overall Width	HCPCS	Retail Pkg.	Pkg.
G1-301DX1	Drop Arm	350 lbs (158.8 kg)	19"-23"	16.5"	20"	23"	E0165	N	1 ea
G1-301DX2	Drop Arm	350 lbs (158.8 kg)	19"-23"	16.5"	20"	23"	E0165	N	2/cs
G1-303DWX1	Drop Arm, Four Locking Casters	350 lbs (158.8 kg)	17"-22.5"	17.5"	16.5"	23"	E0163	N	1 ea

Economy Commodes Tool-free Assembly

- Basic steel commode without seat lid or plastic armrests
- Available with standard or elongated seat
- Comes with seat, bucket and splash guard

Item No.	Description	Wt. Cap.	Seat Height	Seat Depth	Inside Arm Width	Overall Width	HCPCS	Retail Pkg.	Pkg.
G1-202EX4	Folding Standard Seating	350 lbs (158.8 kg)	16"-22"	14.5"	19"	21"	E0163	N	4/cs
G1-202ELX4	Folding Elongated Seating	350 lbs (158.8 kg)	16"-22"	16.5"	19"	21"	E0163	N	4/cs



Easy to fold and budget friendly

Bariatric Commodes

- Fixed and folding commodes have sturdy steel frames
- Comes with pail, lid, splash guard and solid seat
- Perfect for higher weight capacity needs

Item No.	Description	Wt. Cap.	Seat Height	Seat Depth	Inside Arm Width	Overall Width	HCPSC	Retail Pkg.	Pkg.
G1-201LBX1	Bariatric Steel Folding Elongated Commode	650 lbs (294.8 kg)	16"-22"	16.5"	24"	31"	E0168	N	1 ea
New G1-201LBX2	Bariatric Steel Folding Elongated Commode	650 lbs (294.8 kg)	16"-22"	16.5"	24"	31"	E0168	N	2/cs
G1-400BX2	Bariatric Steel Fixed Bench Seat	650 lbs (294.8 kg)	17"-20.5"	18.5"	24"	29.5"	E0168	N	2/cs
G1-400BDX1	Bariatric Steel Drop Arm Commode	1,000 lbs (453.6 kg)	17.5"-21.5"	18.5"	25"	31"	E0168	N	1 ea
G1-400BDX2	Bariatric Steel Drop Arm Commode	1,000 lbs (453.6 kg)	17.5"-21.5"	18.5"	25"	31"	-	N	2/cs



G1-201LBX1



G1-400BX2



G1-400BDX1

Aluminum Commodes Tool-free Assembly

- Rust-resistant aluminum
- Multi-functional bathroom usage

Item No.	Description	Wt. Cap.	Seat Height	Seat Depth	Inside Arm Width	Overall Width	HCPCS	Retail Pkg.	Pkg.
G1-501LWX1*	Aluminum Elongated Commode, with Four Locking Casters	300 lbs (136.1 kg)	21.5"	16.5"	18"	22"	E0163	N	1 ea
G1-502PWX1	Aluminum Padded Shower Chair Commode, with Four Locking Casters	300 lbs (136.1 kg)	20.5"	16"	18.5"	21"	E0163	N	1 ea
G1-503WCPX1*	Aluminum Shower Commode Wheelchair	275 lbs (124.7 kg)	20"-22"	15.5"	19"	25"	E0163 + E0175	N	1 ea
G1-504WCPX1*	Aluminum Shower Commode Transport Chair	275 lbs (124.7 kg)	20"-22"	15.5"	19"	23"	E0163 + E0175	N	1 ea
G1-505LX1	Aluminum 3-In-1 Folding Commode	350 lbs (158.8 kg)	15.5"-21.5"	16.5"	17"	22"	E0163	N	1 ea
G1-506DWX1	Aluminum Drop Arm Commode, with Four Locking Casters	300 lbs (136.1 kg)	18.5"-23"	16.5"	17.5"	22"	E0163	N	1 ea
G1-507BWX1	Aluminum Bariatric Commode, with Four Locking Casters	1,000 lbs (453.6 kg)	21"	21"	25.5"	28.5"	E0168	N	1 ea

*Tools included



G1-502PWX1



G1-503WCPX1



G1-506DWX1



G1-507BWX1

Buckets  **Tool-free Assembly**

- Replacement commode buckets
- Available with or without lid and handle

Item No.	Description	HCPCS	Retail	
			Pkg.	Pkg.
MDS80306B	Bucket with Lid and Metal Handle	E0167	N	6/cs
MDS80306BH	Bucket with Lid and Metal Handle	E0167	N	1 ea
MDS80306EB	Bucket Only	E0167	N	18/cs
G1-004X18	Bucket Lid Only	-	N	18/cs
G1-005X6	Bucket with Lid and Plastic Handle	E0167	N	6/cs
G1-400BBUC	Bucket with Lid and Handle for Bariatric Commodes G1-400BX2, G1-201LBX1, G1-201LBX2,	E0167	N	1 ea
G1-400DBBUCK	Bucket with Lid and Metal Handle Replacement for G1-400BDX1	E0167	N	1 ea

Commode Liners  **Tool-free Assembly**

- Disposable commode liners make clean up easy
- Mountable liner holder available to keep them within easy reach

Item No.	Description	HCPCS	Retail	
			Pkg.	Pkg.
MDS89664LINER	Commode Liner with Absorbent Pad, 12/roll	-	Y	6 rolls/cs
MDS89664LINEH	Commode Liner with Absorbent Pad, 12/roll	-	Y	1 roll
G1-003RX6	Commode Liner with Absorbent Pad, 12/roll, with Box Dispenser Cutout	-	Y	6 rolls/cs
G1-001X1	Commode Liner Wall Mount for G1-003X6	-	N	1 ea
G1-002X1	Commode Liners, No Absorbent Pad, 50/roll	-	N	1 roll



MDS80306B



G1-001X1



MDS89664LINER

Shower Chairs

Shower chairs and transfer benches can make getting in and out of the tub or shower easier and more convenient. Shower chairs are placed inside the tub or shower, while transfer benches straddle the side of a tub, allowing one to sit outside the tub then move over the surface of the bench into the tub.

Shower Chairs with Back Tool-free Assembly

- Rust-resistant aluminum chairs are perfect for patients who have difficulty standing in the shower
- Backrest included for added stability, security and comfort

Item No.	Description	Wt. Cap.	Seat Height	Seat Depth	HCPCS	Retail Pkg.	Pkg.
G2-100KH1	Shower Chair with Arms	350 lbs (158.8 kg)	16"-21"	13.5"	E0240	N	1 ea
MDS89745RAH	Shower Chair with Arms	350 lbs (158.8 kg)	16"-21"	13.5"	E0245	Y	1 ea
MDS89745ELMBH	Tan Shower Chair with Arms, with Microban*	350 lbs (158.8 kg)	15"-21"	15"	-	Y	1 ea
MDS89745KDMBH	Light Blue Shower Chair, with Microban*	300 lbs (136.1 kg)	13.75"-20.75"	12"	E0240	Y	1 ea
G2-101KX1	Shower Chair	400 lbs (181.4 kg)	13.75"-20.5"	12"	E0240	N	1 ea
G2-101KRX1	Shower Chair	400 lbs (181.4 kg)	13.75"-20.5"	12"	E0240	Y	1 ea
G2-102KX1	Knockdown Shower Chair	400 lbs (181.4 kg)	15"-19"	12"	E0240	N	1 ea
New G2-102KX4	Knockdown Shower Chair	400 lbs (181.4 kg)	15"-19"	12"	E0240	N	4/cs
G2-103RX1	Folding Shower Chair	300 lbs (136.1 kg)	14.5"-20.5"	15"	E0240	Y	1 ea
G2-104AX2	Deluxe Aluminum Shower Chair	400 lbs (181.4 kg)	13.5"-20.5"	12"	E0240	N	2/cs
G2-105RX1	Premium Plastic Shower Chair with Arms	350 lbs (158.8 kg)	16"-20.5"	15"	E0240	Y	1 ea
New G2-106KX1	Gray Knockdown Shower Chair with Cutout for Easy Cleaning	300 lbs (181.4 kg)	16.5"-21.5"	14.5"	E0240	N	1 ea
New G2-107KRX1	360 Swivel Shower Chair with Arms	350 lbs (158.8 kg)	15.5"-21.5"	15.5"	-	Y	2/cs
G2-111KM1	Shower Chair with Microban*, White	300 lbs (181.4 kg)	16.5"-20.5"	14"	E0240	N	1 ea
G2-112KM1	Shower Chair with Microban*, Blue	300 lbs (181.4 kg)	16.5"-20.5"	14"	E0240	N	1 ea

*Antimicrobial properties are built-in to protect the product. This product does not protect users or others against bacteria, viruses, germs or other disease organisms.



Item No. G2-107KRX1

360 Swivel Shower Chair

Enter and exit the shower with ease.

- Backrest for additional comfort
- Flip back armrests for easy transfer in and out of shower/chair
- Slip resistant rubber feet
- 360 degree rotating seat locks in 4 places for smooth movements
- Push button height adjustable legs

Shower Chairs without Back Tool-free Assembly

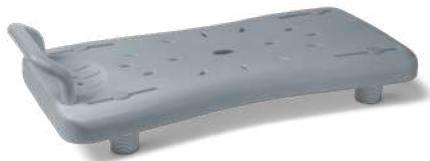
- Rust-resistant aluminum shower chairs for patients who have difficulty standing in the shower
- No backrest for easy maneuverability in tight spaces

Item No.	Description	Wt. Cap.	Seat Height	Seat Depth	HCPCS	Retail Pkg.	Pkg.
G2-200KH1	Shower Chair with Arms	350 lbs (158.8 kg)	16"-21"	13.5"	-	N	1 ea
MDS89740RWAH	Shower Chair with Arms	350 lbs (158.8 kg)	16"-21"	13.5"	E0245	Y	1 ea
G2-201KR1	Retail Shower Chair	400 lbs (181.4 kg)	13.75"-20.5"	12"	E0245	Y	1 ea
G2-201KX4	Retail Shower Chair	400 lbs (181.4 kg)	13.75"-20.5"	12"	E0245	Y	2/cs
G2-202KX1	Shower Chair, Knockdown	400 lbs (181.4 kg)	15"-19"	12"	E0245	N	1 ea
G2-203FR1	Folding Shower Chair	250 lbs (113.4 kg)	14.5"-16"	12"	E0245	Y	1 ea
G2-204AX2	Assembled Shower Chair	400 lbs (181.4 kg)	13.5"-20.5"	12"	E0240	N	2/cs
G2-300KR1	Bath Stool	300 lbs (136.1 kg)	13.75"-20.5"	12.5"	E0245	Y	1 ea
G2-300KRP1	Padded Bath Stool with Swivel	300 lbs (136.1 kg)	16"-22"	13.75"	E0245	Y	1 ea
G2-400RX1	Tub Portable Bath Bench	250 lbs (113.4 kg)	22"	12.5"	E0245	Y	1 ea

Bariatric Shower Chairs Tool-free Assembly

- Heavy-duty reinforced frames
- For higher weight capacity needs

Item No.	Description	Wt. Cap.	Seat Height	Seat Depth	HCPCS	Retail Pkg.	Pkg.
G2-100BAX1	Assembled Shower Chair with Back	650 lbs (294.8 kg)	16.5"-20.5"	17"	E0245	N	1 ea
G2-102BX1	Shower Chair with Back	550 lbs (249.5 kg)	15"-20"	12"	E0245	N	1 ea
G2-202BX1	Shower Chair without Back	550 lbs (249.5 kg)	15"-20"	12"	E0245	N	1 ea



G2-400RX1



G2-300KR1

Great for small spaces



G2-200KH1



G2-201KR1



G2-300KRP1



G2-102BX1

Transfer Benches Tool-free Assembly

- Allow patients to enter the bath tub from a seated position
- Padded and bariatric options available to meet various needs

Item No.	Description	Wt. Cap.	Seat Height	Seat Depth	HCPCS	Retail Pkg.	Pkg.
G3-100KBX1	Transfer Bench	400 lbs (181.4 kg)	18"-22.5"	16.25"	E0247	N	1 ea
G3-100KBX2	Transfer Bench	400 lbs (181.4 kg)	18"-22.5"	16.25"	E0247	N	2/cs
G3-100KBRX1	Transfer Bench	400 lbs (181.4 kg)	18"-22.5"	16.25"	E0247	Y	1 ea
G3-101KBX1	Transfer Bench Commode	400 lbs (181.4 kg)	18"-22"	16"	E0247	N	1 ea
G3-101KBPX1	Combination Transfer Bench and Commode, Padded	400 lbs (181.4 kg)	18"-22"	16"	E0247	N	1 ea
G3-200KBX1	Bariatric Transfer Bench	500 lbs (226.8 kg)	19.25"-23.5"	16.5"	E0248	N	1 ea
G3-300BAX1	Bariatric Transfer Bench with Brace	600 lbs (272.2 kg)	20"-24"	16.5"	E0248	N	1 ea
New G3-400X1	Swivel and Sliding Transfer Bench	350 lbs (158.8 kg)	22.13"-26.5"	13"	-	N	1 ea
New G3-401KRX1	Sliding Transfer Bench	300 lbs (136.1 kg)	20.5"-24.5"	16"	E0247	Y	1 ea
G3-500KRX1	Composite Transfer Bench	350 lbs (158.8 kg)	17"-21"	17.5"	E0247	Y	1 ea
G3-001RX1	Transfer Bench Shower Curtain	-	N/A	-	-	Y	1 ea
MDS86960KDMBH	Transfer Bench with Microban*, Light Blue	350 lbs (158.8 kg)	18"-22.5"	16.25"	E0247	Y	1 ea
MDS86960KDMGH	Transfer Bench with Microban*, Dark Gray	350 lbs (158.8 kg)	18"-22.5"	16.25"	E0247	N	1 ea

*Antimicrobial properties are built-in to protect the product. This product does not protect users or others against bacteria, viruses, germs or other disease organisms.



MDS86960KDMGH



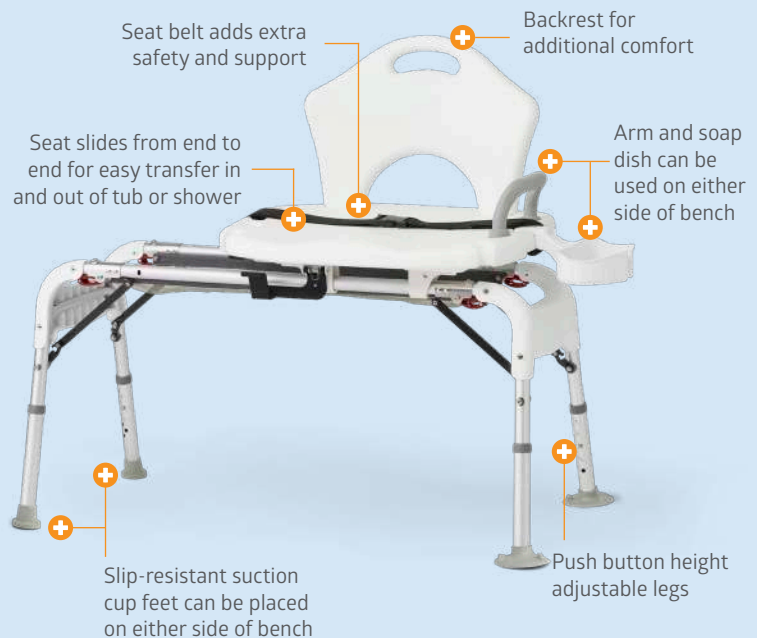
Great add-on item for your Transfer Bench

G3-001RX1

Item No. G3-401KRX1

Sliding Transfer Bench

Lightweight foldable design.



Raised Toilet Seats

A raised toilet seat installs on top of or in place of the toilet seat, decreasing the distance to the seat when sitting down or standing up.

Economy Raised Toilet Seats Tool-free Assembly

- Makes using the toilet easier for those with trouble bending
- Simple design made of polypropylene resin is easy to clean
- Slip-resistant pads and lip inside toilet offer additional stability

Item No.	Description	Wt. Cap.	HCPCS	Retail Pkg.	Pkg.
G4-111MX1	Elevated Locking Toilet Seat, with Microban*, 5", White	400 lbs (181.4 kg)	E0244	N	1 ea
G4-111MRX1	Elevated Locking Toilet Seat, with Microban*, 5", White	400 lbs (181.4 kg)	E0244	Y	1 ea
G4-112MX1	Elevated Locking Toilet Seat without Arms, with Microban*, 5", Blue	400 lbs (181.4 kg)	E0244	N	1 ea
G4-200RX1	2" Universal Hinged Seat Riser with Lid	400 lbs (181.4 kg)	E0244	Y	1 ea
New G4-201PX1	4" Padded Seat Riser	-	E0244	Y	1 ea
G4-115MRX1	Elevated Locking Toilet Seat with Arms, with Microban*, 5", White	400 lbs (181.4 kg)	E0244	Y	1 ea
G4-301LRX1	3.5" Seat Riser with Arms for Elongated Toilets	400 lbs (181.4 kg)	E0244	Y	1 ea
G4-301RX1**	3.5" Seat Riser with Arms for Standard Toilets	400 lbs (181.4 kg)	E0244	Y	1 ea
G4-300LRX1**	3.5" Hinged Toilet Seat Riser, Elongated	400 lbs (181.4 kg)	E0244	Y	1 ea
G4-300RX1**	3.5" Hinged Toilet Seat Riser	400 lbs (181.4 kg)	E0244	Y	1 ea
G4-300BRX1**	Bariatric Seat Riser without Arms	600 lbs (272.2 kg)	E0244	Y	1 ea
G4-300BHRX1	Bariatric Seat Riser with Arms	600 lbs (272.2 kg)	E0244	Y	1 ea
G4-400RX1	Raised Toilet Seat with Side Locks, 4", White	400 lbs (181.4 kg)	E0244	Y	1 ea
G4-500RX1	Toilet Seat Riser without Arms, without Lock, 5", White	400 lbs (181.4 kg)	E0244	Y	1 ea
G4-501RX1	Toilet Seat Riser without Arms, with Lock, 5", White	400 lbs (181.4 kg)	E0244	Y	3/cs
G4-502RX1	Elevated Locking Toilet Seat with Arms, 5", White	400 lbs (181.4 kg)	E0244	Y	3/cs
G4-503LRX1	Elongated Elevated Locking Toilet Seat with Arms, 5", White	400 lbs (181.4 kg)	E0244	Y	3/cs

*Antimicrobial properties are built-in to protect the product. This product does not protect users or others against bacteria, viruses, germs or other disease organisms.

** Tools may be needed to remove toilet seat.



G4-301RX1



G4-300RX1



G4-300BHRX1



G4-400RX1



G4-503LRX1

Safety Rails

Rails offer steady support for sitting and standing, helping reduce strain and falls when using the toilet.



G5-400RX1

Toilet Safety Rails Tool-free Assembly

- Easy-to-clean aluminum frame mounts securely onto bowl

Item No.	Description	Wt. Cap.	Arm Rest Heights	HCPCS	Retail Pkg.	Pkg.
MDS86100RF	Aluminum Foldable Toilet Safety Rails	250 lbs (113.4 kg)	27.5"-32"	E0243	Y	1 ea
G30300	Aluminum Toilet Safety Rails with Padded Armrests	300 lbs (136.1 kg)	26"-31"	E0243	N	2/cs
G30300H	Aluminum Toilet Safety Rails with Padded Armrests	300 lbs (136.1 kg)	26"-31"	E0243	N	1 ea
New G5-100RX1	Aluminum Foldable Toilet Safety Rails	250 lbs (113.4 kg)	27.6"-31.9"	E0243	Y	1 ea
New G5-101RX1	Aluminum Foldable Toilet Safety Rails with Suction Cup Tips	250 lbs (113.4 kg)	28.75"-32.75"	-	Y	1 ea
New G5-200RX1	Aluminum Toilet Safety Rails with Padded Armrests	300 lbs (136.1 kg)	26"-31"	-	Y	1 ea
New G5-200X4	Aluminum Toilet Safety Rails with Padded Armrests	300 lbs (136.1 kg)	26.02"-30.04"	-	N	4/cs
New G5-400RX1	Free Standing Toilet Rail	300 lbs (136.1 kg)	NA	-	Y	1 ea

*Tools may be needed to remove toilet seat.

Grab Bars

Grab bars allow safe mobility to perform everyday tasks that might otherwise require assistance in or around showers and tubs, helping to make bathing safer.

C = Chrome W = White

White Enamel Grab Bars

- Enamel-coated steel grab bars mount to the wall
- Can be used horizontally or vertically and include mounting hardware

Item No.	Description	Wt. Cap.	HCPCS	Retail Pkg.	Pkg.
G5-012WRX1	12" Length	300 lbs (136.1 kg)	E0241	Y	1 ea
G5-016WRX1	16" Length	300 lbs (136.1 kg)	E0241	Y	1 ea
G5-018WRX1	18" Length	300 lbs (136.1 kg)	E0241	Y	1 ea
G5-024WRX1	24" Length	300 lbs (136.1 kg)	E0241	Y	1 ea
G5-032WRX1	32" Length	300 lbs (136.1 kg)	E0241	Y	1 ea



G5-012WRX1

Knurled Chrome Grab Bars

- Chrome plated steel grab bars mount to the wall
- Can be used horizontally or vertically and include mounting hardware

Item No.	Description	Wt. Cap.	HCPCS	Retail Pkg.	Pkg.
G5-012CRX1	12" Length	300 lbs (136.1 kg)	E0241	Y	1 ea
G5-016CRX1	16" Length	300 lbs (136.1 kg)	E0241	Y	1 ea
G5-018CRX1	18" Length	300 lbs (136.1 kg)	E0241	Y	1 ea
G5-024CRX1	24" Length	300 lbs (136.1 kg)	E0241	Y	1 ea
G5-032CRX1	32" Length	300 lbs (136.1 kg)	E0241	Y	1 ea



G5-012CRX1

Suction Grab Bars Tool-free Assembly

- Attach to the wall without screws
- Grab bars stay in place with suction cups
- White
- This product is not weight bearing, it is only to be used as a balance assist

Item No.	Description	HCPCS	Retail Pkg.	Pkg.
MDS86012SCLI	With Locking Indicator, 12" L	E0241	Y	3/cs
MDS86012SCLIH	With Locking Indicator, 12" L	E0241	Y	1 ea
MDS86016SCLI	With Locking Indicator, 16" L	E0241	Y	3/cs
MDS86016SCLIH	With Locking Indicator, 16" L	E0241	Y	1 ea
MDS86019SCLI	Pivot Grab Bar, 19" L	E0241	Y	3/cs
MDS86019SCLIH	Pivot Grab Bar, 19" L	E0241	Y	1 ea
G5-012SRX1	With Locking Indicator, 12" L	-	Y	1 ea
G5-016SRX1	With Locking Indicator, 16" L	-	Y	1 ea
G5-019SRX1	Pivot Grab Bar, 19" L	-	Y	1 ea



MDS86016SCLI

Tub Grab Bars Tool-free Assembly

- Step-through clamp design for better hand positioning
- Tool-free installation with lined pads that won't mar tub surface
- White
- This product is not weight bearing, it is only to be used as a balance assist

Item No.	Description	HCPCS	Retail Pkg.	Pkg.
G98006	Composite, Locks to Side of Tub	E0241	Y	3/cs
G98006H	Composite, Locks to Side of Tub	-	Y	1 ea
MDS86321WPMB	Composite with Microban*, Locks to Side of Tub	E0246	Y	2/cs
MDS86321WPMBH	Composite with Microban*, Locks to Side of Tub	E0246	Y	1 ea
MDS86321W	Steel, Locks to Side of Tub	E0246	Y	2/cs
MDS86321WH	Steel, Locks to Side of Tub	E0246	Y	1 ea
G5-300RX1	Steel, Locks to Side of Tub	-	Y	1 ea
G5-301RX1	Composite, Lock to Side of Tub	-	Y	1 ea
G5-301MRX1	Composite with Microban*, Locks to Side of Tub	-	Y	1 ea
New G5-302HRX1	Height Adjustable Tub Bar	-	Y	1 ea



G5-302HRX1

*Antimicrobial properties are built-in to protect the product. This product does not protect users or others against bacteria, viruses, germs or other disease organisms.

Accessories

Motion-sensing Nightlight Tool-free Assembly

- Designed to illuminate dark bathrooms
- Comes with 16 different color options
- Attaches easily to the toilet rim
- Requires 3 AAA batteries
- Comes in retail packaging

Item No.	Description	HCPCS	Retail Pkg.	Pkg.
G7-201RX1	Toilet Safety Light	-	Y	1 ea



G7-201RX1

Cast Protectors

- Help keep casts dry when bathing
- Available in adult and child sizes
- Clear

Item No.	Description	HCPCS	Retail Pkg.	Pkg.
CUR200ALL	Adult Leg	-	Y	6/cs
CUR200ALLH	Adult Leg	-	Y	1 ea
CUR200AAA	Adult Arm	-	Y	6/cs
CUR200AAAH	Adult Arm	-	Y	1 ea
CUR100KLL	Child Leg	-	Y	6/cs
CUR100KLLH	Child Leg	-	Y	1 ea
CUR100KAA	Child Arm	-	Y	6/cs
CUR100KAAH	Child Arm	-	Y	1 ea



CUR200ALL



CUR200AAA

Shower Heads Tool-free Assembly

- Easy to install handheld shower heads with diverter valve
- Two styles

Item No.	Description	HCPCS	Retail Pkg.	Pkg.
G7-101RX1	White Hand held Showerhead with 7' hose	-	Y	1 ea
G7-100RX1	Silver Deluxe with 3 Massage Functions	-	Y	1 ea



G7-100RX1

Bath Mats Tool-free Assembly

- Slip-resistant heavyweight mat with suction cups on bottom for secure grip
- Microban* helps protect bath mat from growth of stains and odors caused by bacteria, mold and mildew

Item No.	Description	HCPCS	Retail Pkg.	Pkg.
G7-300RX1	Bath Mat with Microban*, White, 13.4" x 29"	-	Y	1 ea
New AG250031USHH	Serenity Foot Massage Bath Mat, 35" x 13"	-	Y	1 ea
G7-400RX1	Tub and Shower Anti-Slip Tread	-	Y	1 ea



G7-300RX1

*Antimicrobial properties are built-in to protect the product. This product does not protect users or others against bacteria, viruses, germs or other disease organisms.

Bath Furniture

- Teak look without the constant maintenance
- Frames are aluminum, seat and shelf are composite wood

Item No.	Description	Wt. Cap.	HCPCS	Retail Pkg.	Pkg.
G2-501X1	Bathroom Corner Bench with Faux Wood	200 lbs (90.7 kg)	-	N	1 ea



G2-501X1

Homecare Beds and Accessories

Discover our top-quality homecare beds and accessories designed for ultimate care and satisfaction of patients and caregivers.

Our beds are light, easy to transport, setup, and maintain. Each bed is rigorously tested to handle maximum weight safely. With premium electronics certified to industry standards, these beds provide smooth reliable operation for years. Cleaning is easy with low maintenance end panels, and motors that stay in place, including quick snap on and off motor that exist in some beds.

Bed accessories including but not limited to side rails, mattresses, battery backup, trapezes are sold separately to complete your bed packages. **Only use Medline-branded accessories with any of our homecare beds.**

Basic Homecare Beds

These semi- and full-electric homecare beds are designed to stand the test of time with easy operations and premium electronics that are certified to industry standards.



Scan here to learn about assembly.

Medline Basic Homecare Beds

- High reliability at an economical price
- Easy transport and setup with a foot section weighing 42 lbs. and a snap-on motor for head/foot adjustment
- Quiet bed operation using hand pendant containing 9V battery backup

Item No.	Description	Wt. Cap.	Height Range	Weight	Sleep Surface	HCPCS	Retail Pkg.	Pkg.
MDR107002E	Basic Homecare Semi-Electric Bed	450 lbs (204.1kg)	15"-23"	147 lbs	34.6"W x 80"L	E0295	N	1 ea
MDR107003E	Basic Homecare Full-Electric Bed	450 lbs (204.1kg)	15"-23"	157 lbs	34.6"W x 80"L	E0297	N	1 ea
MDR107003ELO	Basic Homecare Full-Electric Low Bed	450 lbs (204.1kg)	9.5"-22.8"	157 lbs	34.6"W x 80"L	E0297	N	1 ea

Medline Basic Homecare Bed Parts

Part	Description	Pkg.	MDR107002E	MDR107003E	MDR107003ELO
Head & Foot	Foot Deck Assembly	1 ea	MDR510054	MDR510054	MDR510054
	Head Deck Assembly	1 ea	MDR510114	MDR510114	MDR510114
	Foot Board Assembly	1 ea	MDR510044	MDR520044	MDSLOWBASIC
	Head Board Assembly	1 ea	MDR510024	MDR510024	MDSLOWBASIC
	Panel for Head/Foot Board	1 ea	MDR510254	MDR510254	MDR510254L
Electronics	Head / Foot Motor	1 ea	MDR510074	MDR520084	MDR520084
	Hi Lo Motor	1 ea		MDR520164	MDR520164
	Pendant with 9V Battery Backup	1 ea	MDR530094	MDR540094	MDR540094
Parts	Casters (2 Locking, 2 Non-locking)	2 pr	MDR630034R	MDR630034R	MDR630034R
	Composite Inserts for Casters	1 pr	MDR620185	MDR620185	MDR620185
	Removable Hand Crank	1 ea	MDRCRANK	MDRCRANK	MDRCRANK
	Drive Shaft (Two pieces)	1 ea	MDR510124	MDR510124	MDR510124
	Motor Cover Plates	1 ea	MDR510074CP		
	Knob, Spacer, Clamp for Half Rail, MDS89697	1 ea	MDSRAILKNOB	MDSRAILKNOB	MDSRAILKNOB

For highlighted items, please contact Product Support or Customer Service to ensure compatibility with older bed versions.

MedLite™ Homecare Beds

MedLite™ semi- and full-electric homecare beds are lightweight for easy setup and maneuverability. Durable and simple to operate with premium electronics that are certified to industry standards.



Scan here to learn about assembly.

MedLite™ Homecare Beds

- Premium lightweight homecare beds
- Full-electric bed comes with 4 separate motors that come pre-installed, and includes a detachable hand crank
- Reinforced frame design improves durability

Item No.	Description	Wt. Cap.	Height Range	Weight	Sleep Surface	HCPCS	Retail Pkg.	Pkg.
MDR107002L	MedLite™ Homecare Semi-Electric Bed	450 lbs (204.1 kg)	15"-23"	147 lbs	34.6"W x 80"L	E0295	N	1 ea
MDR107003L	MedLite™ Homecare Full-Electric Bed	450 lbs (204.1 kg)	15"-23"	147 lbs	34.6"W x 80"L	E0297	N	1 ea
MDR107003LO	MedLite™ Homecare Full-Electric Low Bed	450 lbs (204.1 kg)	12"-25"	161 lbs	34.6"W x 80"L	E0297	N	1 ea

MedLite™ Homecare Bed Parts

Part	Description	Pkg.	MDR107002L	MDR107003L	MDR107003LO
Head & Foot	Foot Deck Assembly	1 ea	MDR630054	MDR630054	MDR630054
	Head Deck Assembly	1 ea	MDR630114	MDR630114	MDR630114
	Foot Board Assembly	1 ea	MDR630014	MDR630314	MDSLOWBED
	Head Board Assembly	1 ea	MDR630024	MDR630024	MDSLOWBED
	Handle Assembly for Hi Lo Motor	1 ea	MDR620085	-	-
	Panel for Head / Foot Board	1 pr	MDR630244	MDR630244	MDR630254W
Electronics	Head Motor	1 ea	MDR630064R	MDR630064R	MDR630064R
	Foot Motor	1 ea	MDR630074R	MDR630074R	MDR630074R
	Hi Lo Motor	1 ea	-	MDR630164R	MDR630164R
	Control Box	1 ea	MDR630084R	MDR630144R	MDR630144R
	Pendant with Cord	1 ea	MDR630094R	MDR630154R	MDR630154R
	Backup Battery Box	1 ea	-	-	MDRBATTERYBOX
Parts	Casters (2 Locking, 2 Non-locking)	2 pr	MDR630034R	MDR630034R	MDR630034R
	Composite Inserts for Casters	1 pr	MDR620185	MDR620185	MDR620185
	Emergency Crank Handle	1 ea	-	MDR620104	MDR620104
	Drive Shaft (Two pieces)	1 ea	MDR630124	MDR630124	MDR630124
	Fasteners Set for Foot Spring Motor	1 ea	MDR620055	MDR620055	MDR620055
	Fasteners Set for Head Spring Motor	1 ea	MDR620005	MDR620005	MDR620005
	Extension Tube for Foot Motor Assembly	1 ea	MDR630066	MDR630066	MDR630066
	Extension Tube for Head Motor Assembly	1 ea	MDR630065	MDR630065	MDR630065
	Knob, Spacer, Clamp for Half Rail, MDS89697	1 ea	MDSRAILKNOB	MDSRAILKNOB	MDSRAILKNOB

For highlighted items, please contact Product Support or Customer Service to ensure compatibility with older bed versions.

Basic and MedLite™ Homecare Bed Accessories

Mattresses

Item No.	Description	Wt. Cap.	HCPCS	Retail Pkg.	Pkg.
MDR237827	Innerspring, 36" x 80" x 6"	250 lbs (113.4 kg)	E0271	N	1 ea
MDR23784	Innerspring, 36" x 84" x 6"	250 lbs (113.4 kg)	E0271	N	1 ea
MDR237827E	Fiber, 36" x 80" x 6"	250 lbs (113.4 kg)	E0272	N	1 ea
MDR230981R	Foam, 36" x 80" x 6"	350 lbs (158.8 kg)	E0272	N	1 ea
MSCADV0280	Foam, 36" x 80" x 5.5"	300 lbs (181.4 kg)	E0184	N	1 ea
MSCADVHC80	Foam, 36" x 80" x 6"	300 lbs (136.1 kg)	E0184	N	1 ea
MDT24A10	A10 Low-air-loss Mattress, 36" x 80" x 8"	440 lbs (200 kg)	E0277	N	1 ea



MDR230981R

Side Rails Tool-free Assembly

Item No.	Description	Dimensions	HCPCS	Retail Pkg.	Pkg.
MDS89697	Clamp-on Half Rail	19" H x 32.5" L	E0305	N	1 pr
MDS89694N	Spring Loaded Full Rail	17.5" H x 39.5–57.5" L	E0310	N	1 pr
MDS89695N	Economy Full Rail	17.5" H x 39.5–57.5" L	E0310	N	1 pr



MDS89697

Kits Tool-free Assembly

Item No.	Description	Retail Pkg.	Pkg.
MDSBEDCART	Bed Cart Kit for Homecare Beds	N	1 ea
MDR630EXTN	4" Extension Kit for Homecare Beds	N	1 ea
MDSLOWBASIC	Low Bed Conversion Kit for MDR107003E	N	1 ea
MDSLOWBED	Low Bed Conversion Kit for MDR107003L	N	1 ea



MDSBEDCART

Bariatric Homecare Bed

These full-electric bariatric beds are designed with a steel-constructed split frame that is reinforced for strong bedding support. Each bed uses premium electronics that are certified to industry standards.

One person setup

Lightweight Bariatric Homecare Bed

- Premium lightweight bariatric bed with interchangeable plastic molded head/footboard panels
- Four powerful DC motors to adjust head/foot and bed height (2 attached to bed end, 2 attached to frame with control box) independently or simultaneously
- Reinforced steel slat deck for extra support and durability
- Battery backup can be purchased separately



Item No.	Description	Wt. Cap.	Height Range	Weight	Sleep Surface	HCPCS	Retail Pkg.	Pkg.
MDR107004L	Lightweight Bariatric Full-Electric Bed	600 lbs (272.2 kg)	18.1"-26"	190 lbs	42"W x 82"L	E0301*	N	1 ea

*HCPCS only applies to MDR107004L and MDS89697BARL combo

Accessories

Item No.	Description	Dimensions	HCPCS	Retail Pkg.	Pkg.
MDS89697BARL	Bariatric Half Rail for MDR107004L	18" x 29"	E0305	N	1 pr
MDR211892R	Bariatric Rolled Foam Mattress	84" x 6" x 42"	E0272	N	1 ea
MDR004LB	Battery Pack/Battery Backup for MDR107004L	-	-	N	1 ea

Bariatric Homecare Bed Parts

Part	Description	Pkg.	MDR107004L
Head & Foot	Foot Deck Assembly	1 ea	MDR710054L
	Head Deck Assembly	1 ea	MDR710114L
	Foot Board Assembly	1 ea	MDR710024L (interchangeable)
	Head Board Assembly	1 ea	-
	Panel for Foot Board	1 ea	MDRPANEL4L (interchangeable)
	Panel for Head Board	1 ea	-
Electronics	Head Motor	1 ea	MDR710064HL
	Foot Motor	1 ea	MDR710074HL
	Hi Lo Motor	1 ea	MDR710164HL
	Control Box	1 ea	MDR710144HL
	Pendant with Cord	1 ea	MDR710154HL
	Cable Extension for Head Motor	1 ea	-
	Power Cord	1 ea	MDR71BEDCORDL
Parts	Caster, Locking	1 pr	MDR710034LL
	Caster, Non-locking	1 pr	MDR710034SL
	Composite Inserts for Casters	1 pr	-
	Frame Support Bracket Assembly	1 ea	-
	Emergency Crank Handle	1 ea	-
	Drive Shaft (Two pieces)	1 ea	-
	Fastener for Motor Tubes	1 ea	-

Trapezes

- Assist with patient transfers, movement and positioning
- Trapeze bars are mounted to the headboard, and can be free-standing with optional purchases of trapeze base
- All bariatric trapezes are free standing

Item No.	Description	Wt. Cap.	HCPCS	Retail Pkg.	Pkg.	
MDS80615T	Standard Trapeze Bar	250 lbs (113.4 kg)	E0910	N	1 ea	
MDS80616T	Standard Trapeze Base for MDS80615T	250 lbs (113.4 kg)	A9900	N	1 ea	
MDS80618T	Economy Trapeze Bar	250 lbs (113.4 kg)	E0910	N	1 ea	
MDS80619T	Economy Trapeze Base for MDS80618T	250 lbs (113.4 kg)	A9900	N	1 ea	
MDS500TPZ	Lightweight Bariatric Trapeze	500 lbs (226.8 kg)	E0912	N	1 ea	
MDS1000TPZW	Bariatric Trapeze with Wheels	1,000 lbs (453.6 kg)	E0912	N	1 ea	



Overbed Tables

- Versatile multi-purpose overbed table designed for daily living
- Easy height adjustment with H-style base for easy mobility

Item No.	Description	Wt. Cap.	Height Range	HCPCS	Retail Pkg.	Pkg.
MDS104015	Non-Tilt Overbed Table with Walnut Wood Grain Top	50 lbs (22.7 kg)	30"-42"	E0274	N	1 ea
New MDS104015M2	Non-Tilt Classic Oak Overbed Table	50 lbs (22.7 kg)	30"-42"	E0274	N	1 ea
MDS107015	Non-Tilt Overbed Table with Grey Composite Top	50 lbs (22.7 kg)	30"-42"	E0274	N	1 ea
MDS108015	Fold-Flat Overbed Table with Walnut Composite Top and Basket	50 lbs (22.7 kg)	30"-42"	E0274	N	1 ea
MDS104950	Tilt-Top Overbed Table with Walnut Wood Grain Top	50 lbs (22.7 kg)	30"-42"	E0274	N	1 ea



Aids for Daily Living

Bed Assist Bars Tool-free Assembly

- Provide assistance getting in and out of bed
- Multiple hand positioning options to meet user's preference

Item No.	Description	Handle Material	HCPCS	Retail Pkg.	Pkg.
BA6800	Bed Assist Bar, Black	Foam	E0315	Y	1 ea
MDS6800BAM	M-Shape Handle, White	Foam	E0315	N	1 ea



MDS6800BAM

WARNING

Entrapment, strangulation, suffocation and/or fall hazards

Gaps in and around this product can entrap and kill. People with Alzheimer's disease or dementia, or those who are sedated, confused, or frail, are at increased risk of entrapment and strangulation. People attempting to climb over this product are at increased risk of injury or death from falls. Always make sure this product is properly secured to bed. If product can move away from bed or mattress, it can lead to entrapment and death.

WARNING

Suffocation/strangulation/entrapment hazard

If product is installed incorrectly or moves from its initial position, gaps can occur which can entrap and kill. People with Alzheimer's disease, dementia or other neurological conditions, or those who are sedated, confused, or frail, are at increased risk of entrapment, suffocation and strangulation.

- **NEVER** use unless the product is tight against the mattress, without gaps, and at least 12½ in. from headboard and footboard.
- **NEVER** use with children.
- **NEVER** use on toddler, bunk, water, or inflatable beds, or on beds with mattress toppers or soft compressible pads.

Reachers Tool-free Assembly

- Allows user to reach items both high and low
- Slip-resistant rubber tabs over composite jaws latch onto items more securely

Item No.	Description	Retail Pkg.	Pkg.
MDS86031RCEH	31" Reacher, Blue	N	1 ea
MDS86031RCH	31" Reacher, Blue	N	2/pk
MDS86031RCE	31" Reacher, Blue	N	6/cs



MDS86031RCE



MDS86051P

Medline Security Pole Tool-free Assembly

- Provides a safe, stable place to grab when standing and stepping
- For indoor use; includes handle for better grip
- Height adjustable from 7' to 10'
- Simple installation; comes with all tools necessary to install

Item No.	Description	Handle Material	Wt. Cap.	Retail Pkg.	Pkg.
MDS86051P	Security Pole, White	PVC	300 lbs	N	1 ea

Mobility Aid Accessories Tool-free Assembly

- Mobility aid accessories to enhance the user experience

Item No.	Description	Retail Pkg.	Pkg.
MDSCCELLHOLDER	Mobility Aid Cell Phone Holder	N	1 ea
MDSCUPHOLDER	Mobility Aid Cup Holder	N	1 ea
MDS-MOB-LIGHT	Mobility Aid Light	N	1 ea
MDS-MOB-BSK	Mobility Aid Foldable Basket	N	1 ea



MDSCCELLHOLDER

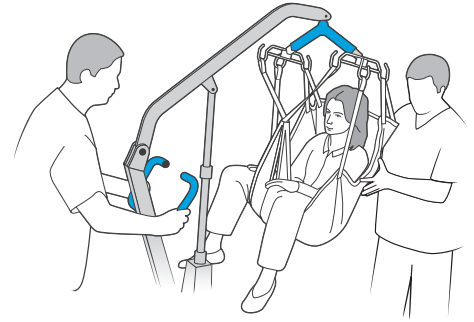


MDSCUPHOLDER

Patient Lifts

Elevate resident and caregiver safety

The Association of Safe Patient Handling Professionals (ASPHP) recommends one mobile lift for every eight residents who need one. Our lifts can help you reduce risks of caregiver injuries and lift residents with exceptional safety, convenience and dependability.



Mobile Lifts

Easy-to-use and reliable mobile lifts designed for all essential clinical tasks, including resident transfers and repositioning.

Manual Hydraulic Patient Lifts

- Elevating hydraulic lift for patient transportation
- Base opens with an easy hand lever
- Tool-free assembly with the use of D-ring pins

Item No.	Description	Wt. Cap.	Pkg.
MDS88200D	6-point Cradle, Includes Sling	400 lbs (181.4 kg)	1 ea
MDS88200DLB	Low Base, Includes Sling	400 lbs (181.4 kg)	1 ea
MDS88200HL	6-point Cradle, No Sling	400 lbs (181.4 kg)	1 ea



MDS88200D

Electric Total Mobile Lifts

- Can be lowered to floor height for lifting a resident who has fallen
- Compatible with lift scales for convenient weighing of residents
- State-of-the-art control panel displays battery charge level and more
- Removable battery pack to reduce downtime with optional off-board charging
- Three-year warranty on mechanical and electrical parts, one-year on the battery

Item No.	Description	Wt. Cap.	Pkg.
MDS400ELB	Powered Lift with Manual Base	400 lbs	1 ea
MDS450EL	Powered Lift with Powered Base	450 lbs	1 ea
MDS600ELB	Powered Lift with Manual Base	600 lbs	1 ea
MDS700EL	Powered Lift with Powered Base	700 lbs	1 ea
MDSMELSCALE	Electric Scale Accessory for MDS450EL and MDS700EL	700 lbs	1 ea
MDS700ARMS	Gait Training Arms Accessory for MDS700EL Only	—	1 ea
MDELSSCALE	Scale Accessory for MDS400ELB	700 lbs	1 ea



MDS700EL
(Shown with optional gait training arms)

Patient Lift Clip Cradle

- Enables caregivers to position residents with one hand
- Helps to eliminate grabbing and pulling
- Makes the caregiver's job easier
- Compatible with Medline mobile powered patient lifts MDS450EL and MDS700EL

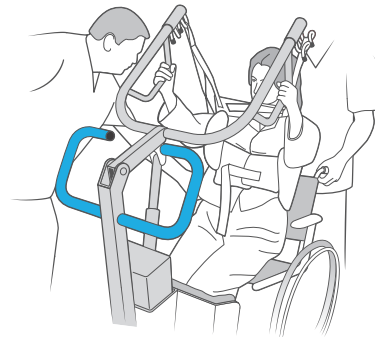
Item No.	Description	Pkg.
MDS700MCRD	Patient Lift Clip Cradle (use with Clip Slings)	1 ea



MDS700MCRD

Stand Assist Lifts

For transferring activities with residents who have some ability to bear weight or to provide support for residents to stand and practice bearing weight.



Electric Stand Assist Lifts

- Adjustable knee pad for finding the perfect fit
- State-of-the-art control panel displays battery charge level and more
- Removable battery pack to reduce downtime with optional off-board charging
- Three-year warranty on all mechanical and electrical parts, one-year on the battery

Item No.	Description	Wt. Cap.	Pkg.
MDS400SAB	Electric Stand Assist with Manual Base	400 lbs	1 ea
MDS600SAB	Electric Stand Assist with Manual Base	600 lbs	1 ea
MDS500SA	Electric Stand Assist with Powered Base	500 lbs	1 ea



MDS500SA

Manual Standing Transfer Aids

- Non-powered transfer device allows a single caregiver to assist residents safely
- Enables residents to support themselves to a standing position
- Features folding seats, dual knee pads, foot rest and grab bar for user
- Hooks for optional support strap

Item No.	Description	Wt. Cap.	Pkg.
STA182	Resident Transfer Aid, Fixed Base	400 lbs	1 ea
STA204	Resident Transfer Aid, Open/Closed Base	450 lbs	1 ea
STA203	Resident Transfer Aid, Short	450 lbs	1 ea
STA205	Resident Transfer Aid, Low Base	450 lbs	1 ea



STA204

Full-body Patient Slings

Ideal for seated transfers and bathing.



Reusable Full-body Slings

- Designed with comfort and safety in mind, these full-body slings have a 4-point hookup
- Can be used with either 4-point or 6-point lift cradles
- Polyester mesh fabric

Without Commode Opening

Item No.	Size	W x H	Wt. Cap.	Best Fit	Pkg.
MDSMR110	Medium	30" x 47"	450 lbs	100–195 lbs	1 ea
MDSMR111	Large	34" x 52"	450 lbs	150–300 lbs	1 ea
MDSMR140	XXL	42" x 52"	700 lbs	290–700 lbs	1 ea



MDSMR110

With Commode Opening

Item No.	Size	W x H	Wt. Cap.	Best Fit	Pkg.
MDSMR114	Medium	32" x 48"	450 lbs	100–195 lbs	1 ea
MDSMR115	Large	35" x 50"	450 lbs	150–300 lbs	1 ea
MDSMR116	X-Large	37" x 56"	450 lbs	200–450 lbs	1 ea
MDSMR141	XXL	42" x 50"	700 lbs	290–700 lbs	1 ea



MDSMR115

Padded Woven Flannel/Cordura Fabric

Item No.	Size	W x H	Wt. Cap.	Best Fit	Pkg.
MDSMR112	Medium	30" x 47"	450 lbs	100–195 lbs	1 ea
MDSMR113	Large	34" x 52"	450 lbs	150–300 lbs	1 ea
MDSMR117	X-Large	36" x 57"	450 lbs	200–450 lbs	1 ea



MDSMR112

Raizer® Mobile Lifting Chair

Now there's a better way to lift someone after a fall.

- Gentle on caregiver—requires virtually no physical effort
- Fast—under a minute, one assistant can set up and raise a large adult from the floor to a standing position
- Easy to carry—two handy bags hold seven lightweight components
- Simple setup—color-coding guides the placement of components, and a loud click confirms each connection
- Easy to clean—cleaning is a snap with the smooth surfaces on all Raizer components
- 330-lb weight capacity

Item No.	Description	Pkg.
MDSRAIZER2	Raizer Mobile Lifting Chair	1 ea

Technical Specifications

Weight Cap.	330 lbs
Lifting time	20–30 seconds
Product weight	28 lbs total
Charger	Two pieces: Soniel 12v, 100–240V 12V car adapter
Number of lifts on a full charge	40 at maximum weight cap.
Charging time	Six hours
Warranty	Two years from invoice date



MDSRAIZER2



All In 4 Easy Steps:



- 1 Place the seat motor under knees



- 2 Attach components to the seat motor



- 3 Mechanically lift the resident using the console buttons or remote control



- 4 Transfer resident to a walker or wheelchair

Our complete selection will help you every step of the way.

Medline is your trusted DME partner, with a wide range of premium products that enhance comfort and mobility, so patients can live their best life.



HCPSC Disclaimer: HCPSC codes and Home Health Consolidated Billing codes provided by Medline are intended as general guidelines only. Medline does not guarantee coverage or reimbursement of any products. You must address all coverage and reimbursement issues (including the correctness and accuracy of codes) with your individual payers.

Some products may not be available for sale in Mexico or Canada. We reserve the right to correct any errors that may occur within this brochure. Trademark designations refer to the United States only.

Reference: 1. Centers for Disease Control (CDC), Caregiving for Family and Friends—A Public Health Issue, https://www.chronicdisease.org/resource/cform/1771227/20190813_123311_21790.pdf#:~:text=there%20will%20be%20only%204%20potential%20family,adults%20aged%2045%2D64%20years%20who%20do%20not, Accessed December 11, 2024.



**We make
healthcare
run better®**

Medline Industries, LP | 1-800-MEDLINE (633-5463) | www.medline.com

© 2025 Medline Industries, LP. All rights reserved. Medline is a registered trademark of Medline Industries, LP. Microban® is a registered trademark of Microban Products Company. All product names, regardless of whether or not they appear with a trademark symbol, are the property of their respective companies unless otherwise noted. MKT19W7720659 / LIT474 / 8M / PP / 94