



**Abbott**

**INFLUENZA A&B**

BINAXNOW™ INFLUENZA A&B CARD 2

# OBJECTIVE RESULTS, PROVEN PERFORMANCE

WHEN FLU SEASON HITS, CLARITY CANNOT WAIT

The BinaxNOW Influenza A&B Card 2 with Digival™ reader delivers fast, accurate, and objective results—right at the point of care. In just minutes, this easy-to-use test with Digival reader interpretation eliminates guesswork and supports confident clinical decisions. With streamlined operation and dependable performance, BinaxNOW helps reduce unnecessary treatments and keeps care moving efficiently—so patients get the answers they need, when they need them most.



## TRUSTED RESULTS

Clear, objective results from a brand you trust



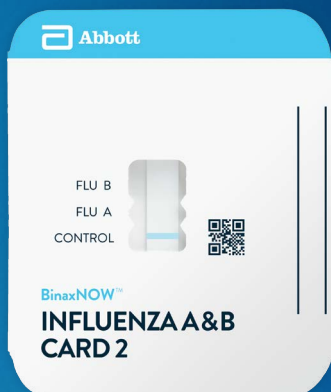
## RESULTS IN 15 MINUTES

Enabling you to diagnose and treat patients in a single visit



## EASY TO USE

Simple test procedure, followed by Digival reader interpretation



## FAST, EASY TEST PROCEDURE\*

Refer to complete Quick Reference Instructions before performing the test.

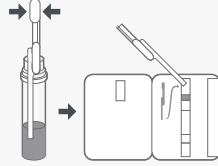
### SWAB:

Elute swab specimen.



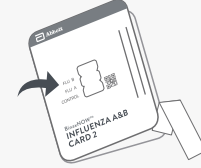
### ADD:

Add entire contents of the 100 ul pipette in a continuous flow to the top, white sample pad.



### CLOSE:

Close and securely seal the card by pressing the right edge of the test card.



### INTERPRET:

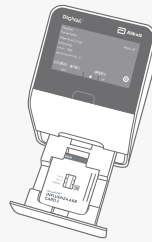
Interpret results on Digival reader with either:

#### Read Now Mode:

After 15 minute incubation, insert the test card and close drawer for interpretation.

#### Walk Away Mode:

After inoculation, insert the test card and close drawer. Digival reader will automatically interpret result at the read time.



### PERFORMANCE\*

	PPA	NPA
INFLUENZA A	84.3%	94.7%
INFLUENZA B	89.5%	99.4%

An FDA cleared influenza real-time Polymerase Chain Reaction (RT-PCR) assay was utilized as the comparator method for this study.

NPA = negative percent agreement

PPA = positive percent agreement

## ORDERING INFORMATION

### INFLUENZA A&B

ITEM	UNIT OF MEASURE	PRODUCT CODE	CPT CODE*
<b>EQUIPMENT</b>			
Digival™ Reader Complete Kit	Digival™ Reader instrument, barcode scanner and holder, calibration check card, assay tray, and USB drive	LFR-124	—
Optional Martel Thermal Printer	—	MCP1810395	—
Thermal Label Rolls - Digival™ Reader - 3/Pack	—	20001584	—
Calibration Check Card Pack	2 calibration check cards	LFR-003	—
USB Drive	—	EQ004003	—
Assay Tray for BinaxNOW™ Influenza A&B Card 2	2 calibration check cards	LFR-004	—
<b>ASSAYS AND CONTROLS</b>			
BinaxNOW™ Influenza A&B Card 2	22 tests per kit	575-000	87400
BinaxNOW™ Influenza A&B Card 2 Controls	10 positive, 10 negative swabs	575-080	—
<b>TEST &amp; DIGIVAL READER KITS</b>			
8 Pack w/out Printer	Digival™ Reader complete kit and 8 BinaxNOW Influenza A&B Card 2 kits	ARFLU8PK	—
Reagent Rental	Digival™ Reader complete kit and 8 BinaxNOW Influenza A&B Card 2 kits per year for 3 years	ARFLURR	—

\*[www.codemap.com/abbottpoc/](http://www.codemap.com/abbottpoc/)



FOR MORE INFORMATION,  
CONTACT YOUR LOCAL ABBOTT  
REPRESENTATIVE OR VISIT  
[GLOBALPOINTOF CARE.ABBOTT](http://GLOBALPOINTOF CARE.ABBOTT)



\*Refer to the product package insert for full instructions and information on performance data.

© 2025 Abbott. All rights reserved. All trademarks referenced are trademarks of either the Abbott group of companies or their respective owners. Any photos displayed are for illustrative purposes only. RDx-25003960 10/25